

17





17

118/T4/796

Quality:
PHILDAR LUXE

DUNGAREES

To fit: 43 (46, 48)cms 17 (18, 19)ins Chest (see size charts)

MATERIALS
2 (3, 3) balls in Blanc
2 Buttons

Suggested needle size: Pair 2mm and 2½mm needles
(see note on Tension)

TENSION

30sts and 40 rows to 10cms measured over patt or st st on 2½mm needles.
37sts and 40 rows to 10cms measured over k2/p2 rib on 2½mm needles.
Important — Use large or smaller needles if necessary to obtain correct tension.

BACK

RIGHT LEG

With 2mm needles cast on 34 (38, 38)sts.
1st row: K2 * p2, k2, rep from * to end.
Work 4cms in k2/p2 rib ending with a right side row.
Next row: Rib 4 (1, 5) * inc 1 in next st, rib 1 (2, 1), rep from * to last 4 (1, 5)sts, inc 1, rib to end. 48 (51, 53)sts.
Change to 2½mm needles and work 4 rows in st st (1 row k, 1 row p).
Cont in patt from diagram, commencing with 10th st on diagram, rep 10sts and end at 10th (8th, 10th)st on diagram working 1 st at each edge for seam, k on RS and p on WS.
Complete 32 rows in patt from diagram and cont in st st until work measures 17 (20, 23)cms ending with a right side row.

SHAPE LEG

Cast off 3sts at beg of next row.
Cast off at same edge on alt rows, 2sts once and 1 st once ending at shaped edge.
Leave rem 42 (45, 47)sts on a spare needle.
Work left leg to match commencing patt with 10th (1st, 10th)st on diagram, rep 10sts and end at 5th (9th, 10th)st on diagram working 1 st at each edge for seam, k on RS and p on WS.
Complete to match Right Leg reversing shaping and ending at side edge.
Place both sets of sts on 2½mm needle (right sides facing and shaped edges to centre of row) knit along row and dec 1 st on each shaped edge in centre for seam. 82 (88, 92)sts.
Cont in st st until work measures 29 (33.5, 38)cms ending with a wrong side row.

SHAPE WAIST

1st and 2nd row: Work to last 7 (8, 8)sts, turn.
Leave 7 (7, 8)sts more unworked at end of next 4 rows, then 6 (7, 7)sts more unworked at end of next 2 rows.
Next row: K to end across all sts.
Next row: P11 (6, 3) * inc 1 in next st, p19 (14, 16), rep from * to last 11 (7, 4)sts, inc 1, p to end. 86 (94, 98)sts.
Next row: K2 (0, 2) * p2, k2, rep from * ending p0 (2, 0).
Work 3 (3.5, 4)cms in k2/p2 rib ending with a wrong side row.

SHAPE ARMHOLES

Cast off 5sts at beg of next 2 rows.
Cast off 4sts at beg of next 4 (2, 4) rows.
Cast off 3sts at beg of next 2 (4, 2) rows.
Cast off 2sts at beg of next 2 (4, 4) rows.
Cast off 1 st at beg of next 2 (4, 6) rows. 48 (52, 52)sts.
Next row: K3 * p2, k2, rep from * ending last rep k3.
Cont in k2/p2 rib until work measures 9 (10.5, 12)cms in rib ending with a wrong side row.

SHAPE NECK

Next row: Rib 18 (20, 20), cast off 12sts, rib 18 (20, 20).
Work each side of neck separately.
Cast off at neck edge on alt rows 4sts 1 (3, 3) times and 3sts 2 (0, 0) times ending with a wrong side row. 8sts.
Next row: K3, p2, k3.
Cont in rib until work measures 14 (15.5, 17)cms in

k2/p2 rib ending with a wrong side row.

Next row: K2tog, k1, cast off 2sts for buttonhole, k1, k2tog.
Next row: P2, cast on 2sts, p2.
Next row: K2tog, p2, k2tog.
Next row: P2tog, p2tog.
Cast off rem 2sts.
Rejoin yarn at neck edge and complete other side of neck to match reversing shaping.

FRONT

LEFT LEG

With 2mm needles cast on 30 (34, 34)sts.
1st row: K2 * p2, k2, rep from * to end.
Work 4cms in k2/p2 rib ending with a right side row.
Next row: Rib 3 (3, 1) * (inc 1 in next st) twice, rib 1 (2, 2), rep from * to last 3 (3, 1)sts, inc 0 (1, 1), rib to end. 46 (49, 51)sts.
Change to 2½mm needles and work 4 rows in st st.
Cont in patt commencing with 6th (10th, 1st)st on diagram, rep 10sts and end at 9th (6th, 9th)st on diagram working 1 st at each edge for seam, knit on RS, purl on WS.
Complete 32 rows in patt and cont in st st until work measures 17 (20, 23)cms ending with a right side row.

SHAPE LEG

Cast off 2sts at beg of next row.
Cast off 1 st at same edge on alt rows twice ending at shaped edge.
Leave rem 42 (45, 47)sts on a spare needle.
Work right leg to match commencing patt with 6th (3rd, 1st)st on diagram, rep 10sts and end at 9th st on diagram working the edge stitches as given.

Complete to match Left Leg reversing shaping and ending at side edge.

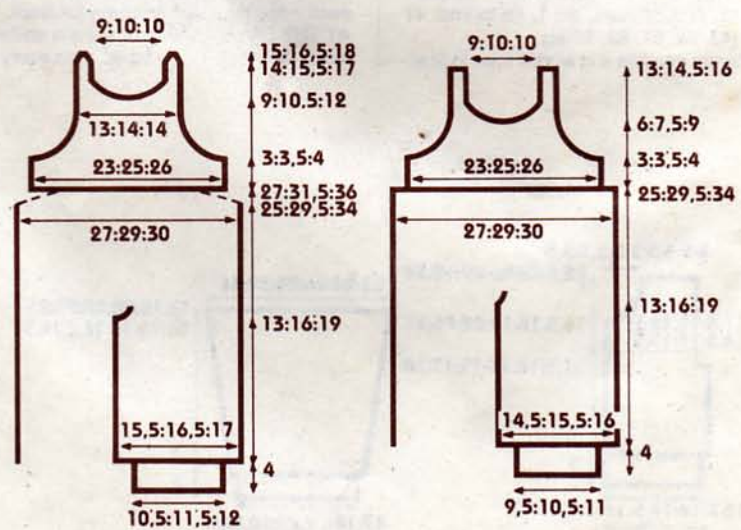
Place both sets of sts on 2½mm needles (right sides facing and shaped edges to centre of row) and dec 1 st on each shaped edge in centre for seam. 82 (88, 92)sts.
Cont straight in st st until work measures 29 (33.5, 38)cms ending with a right side row.
Next row: P11 (6, 3) * inc 1 in next st, p19 (14, 16), rep from * to last 11 (7, 4)sts, inc 1, p to end. 86 (94, 98)sts.
Next row: K2 (0, 2) * p2, k2, rep from * ending p0 (2, 0).
Cont in k2/p2 rib as Back as now set, shape armholes and cont until work measures 6 (7.5, 9)cms in k2/p2 rib ending with a wrong side row. 48 (52, 52)sts.

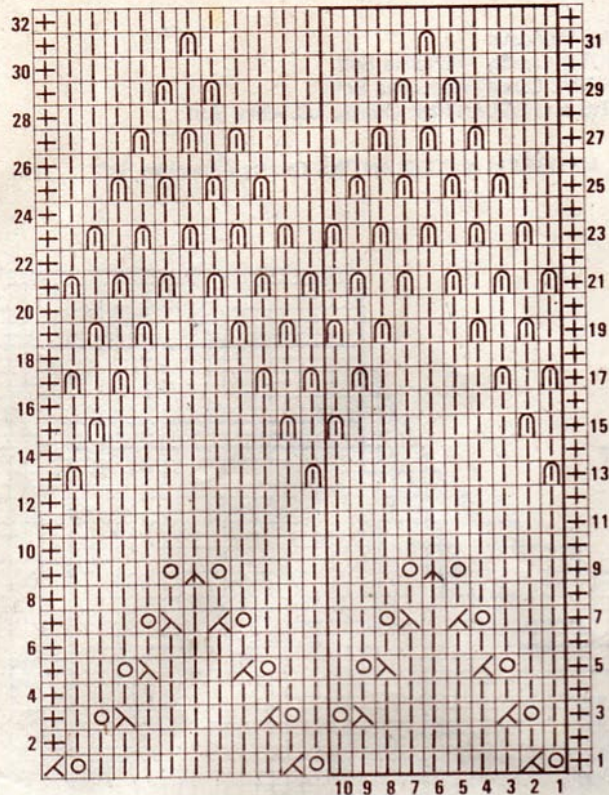
SHAPE NECK

Next row: Rib 20 (22, 22), cast off 8sts, rib 20 (22, 22).
Work each side of neck separately.
Cast off at neck edge on alt rows 4sts once, 3sts once, 2sts 1 (2, 2) times and 1 st 3 times ending with a wrong side row. 8sts.
Next row: K3, p2, k3.
Cont in rib until work measures 13 (14.5, 16)cms in rib ending with a wrong side row.
Cast off.
Rejoin yarn at neck edge and complete other side of neck to match reversing shaping.

TO MAKE UP

Join side, leg and centre lower back and front seams. Sew buttons to front straps.





l = k st on right side and p st on wrong side.

∧ = k2tog.

∧ = sl 1, k1, pss0.

○ = yarn forward.

⤴ = Dec 2V – slip 2sts as if to k2tog, sl 1st st back onto left needle and k2tog with 3rd st, passing behind 2nd st, slip 2nd st over st just made.

∩ = k1 below – k into centre of st below st on needle and slip st off left needle.

+ = knit on right side and purl on wrong side (edge st).