



Oil Mill Plant Installing & Engineering Case

To put our product into practices in clients' projects

This document originated from www.oilpressmachinery.com and is authorized to download



- Our company specialized in manufacturing oil press machines applicable for oil mill plants, 40 years rich experience awarded us a strong production capability, advanced processing expertise and deep industry insights.
- The factory covers 35,000 square meters, there're 95 full sets of mechanical processing equipment in our machine shop, and technical personnel 120, including 22 senior engineers. The heat treatment carburizing technique is automatically temperature computerized, and reach the leading industry level.
- So Far we already assist to build multiple sets of automatic edible oil processing lines for domestic and overseas oil mill plant clients, cooperatively participate the designing, producing, installation and debugging for their projects. Hereby we list 3 typical project cases for clients reference.



1st Project: Huanfa Bio-Tech

100 Tons per day corn germ oil processing line installation

Client Company-Huanfa Bio-Tech



Cooking Roaster Installation



Oil Expeller Installation Ground Preset Treatment



Oilseed Flaking Machine
Slag Coveyor



轧胚机



捞渣机

Vibration screening sieve



振动清理筛

Conveying Trough



Oil Outlet & scraper plate

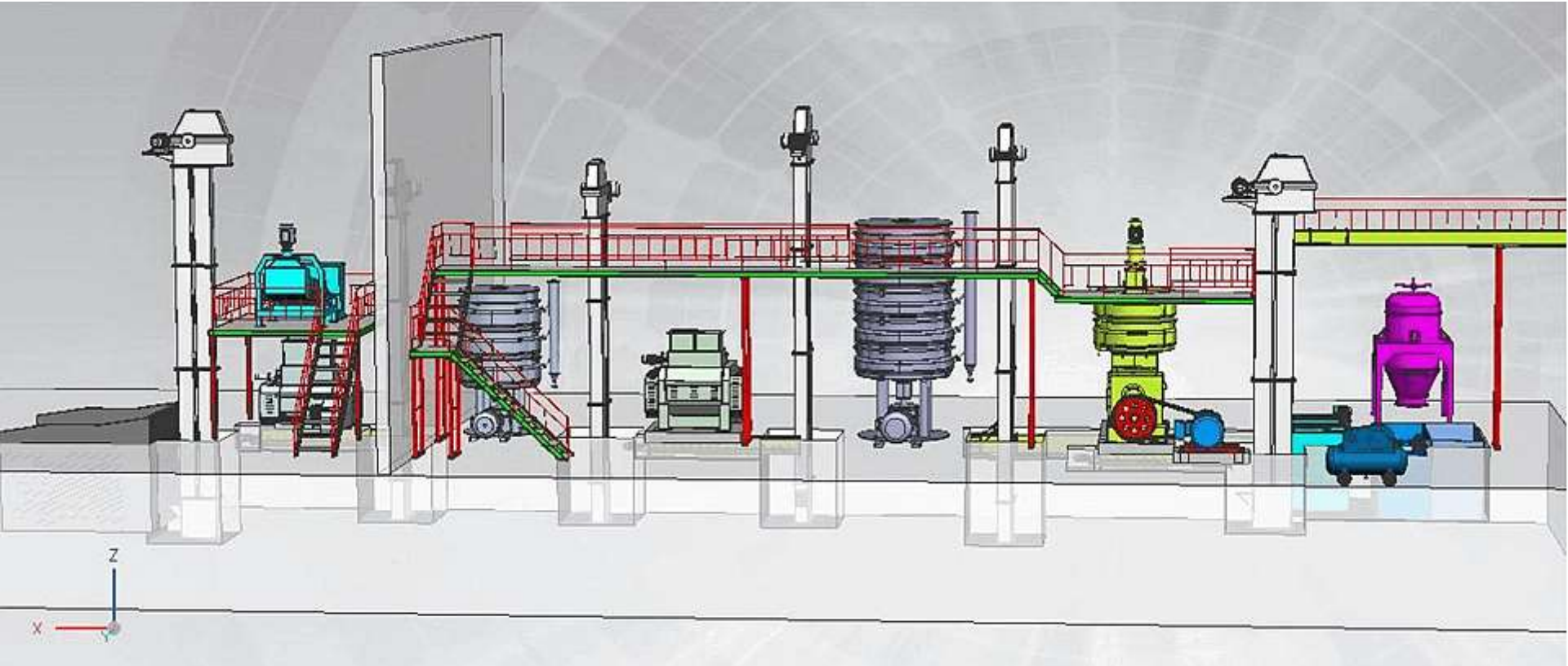


Finished Corn Germ Oil Pressing Production Line Layout



Corn germ oil pressing machine shop (Template Preview Design)

150 Tons per Day Capacity



Project Objective

3 set of oil expeller (type YZY260) was installed in this project, initially achieved the planned objective of 100 tons per day production capacity.

Oil Expeller Tech Parameters

oilseed	Oil Expeller (Type 260)				
	Main motor (kw)	Steam consumption (Ton/Day)	Capacity (Ton/Day)	Oil Residual (%)	Cost of labor (Dollar/Ton)
Cottonseed	75	4	45	≤5	0.65
Castor seed	75	4	45	≤5	0.65
Corn Germ	75	4	38	≤10	0.65
Peanut/groundnut	75	4	45	≤5.5	0.65
Sunflower seed	75	4	45	≤6	0.65

Oil Milling Production Feature

With features of low temperature processing, low oil residual and highly automatic, it contribute to high extraction efficiency with crude oil light-colored, low peroxide value and oil cake quality neatly. Electric/steam consumption can be saved \$ 15~30 per ton.

200A-3 Oil Expeller Tech Parameter

Oilseed Types	Oil Expeller (Type 200A-3)				
	Main motor (kw)	Steam consumption (Ton/Day)	Capacity (Ton/Day)	Oil Residual (%)	Cost of labor (Dollar/Ton)
Cottonseed	22	4	8.5	≤6	2.70
Castor seed	22	4	10	≤5.5	2.70
Corn Germ	22	4	8	≤12	2.70
Peanut/groundnut	22	4	10	≤6	2.70
Sunflower seed	22	4	10	≤6	2.70



2nd Project: Xinghai Grease Oil

- **150 Tons/Day peanut oil pressing and refining processing project**

Peanut oil processing workflow

- Peanut kernel seed—Cleaning—Crushing—
Roast Conditioning—Pressing—Refining

Processing Advantage & Tech Metrics

- **This project adopts the most advanced one-time pressing technology in domestic market.**
- After cleaning, crushing & steaming, the oilseed is pressed at 105 °C, which guaranteed the project objective of highest oil yield rate and low oil residual in cake, high quality lighted-color oil and neatly cake quality.

Engineering Tech Metrics:

- Capacity : ≥ 150 Tons/Day
- Oil in Cake : 14%
- Oilseed Moisture: 4~6%
- Pressing Temperature: 85~110 °C
- Ice powder degree: less 5% through 60 mesh sieve
- Crude oil impurities: $\leq 0.2\%$

Peanut pressing and Extraction machines



Cooking roaster Chain elevator

Magnetic Barrel
Vibration screening sieve
Double-teeth roller crushing machine

Raw material storage tank



蒸炒锅

链式提升机

永磁筒

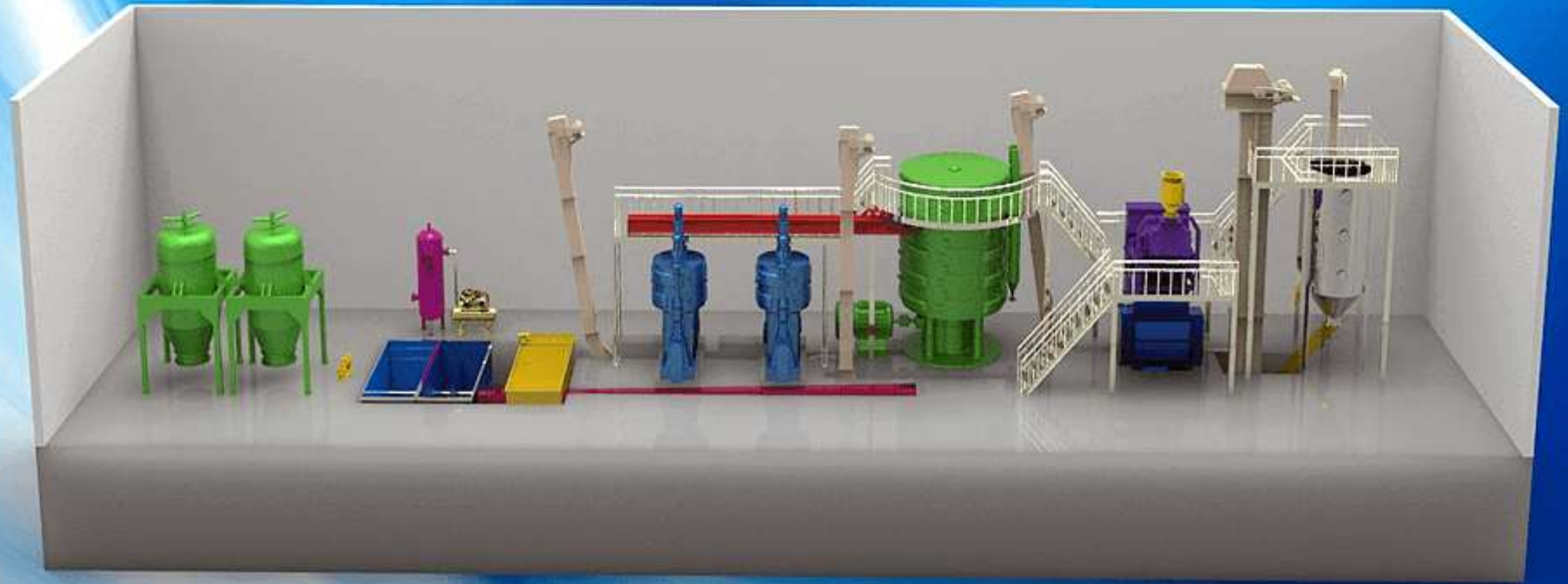
振动清理筛

双对齿辊破碎机

原料暂存箱

Peanut oil expeller pressing workshop (Template Preview Design)

150 Tons per Day Capacity



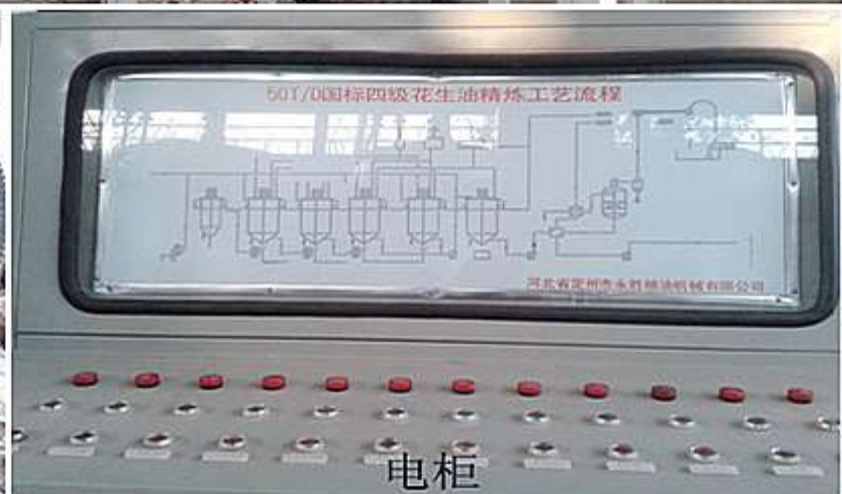
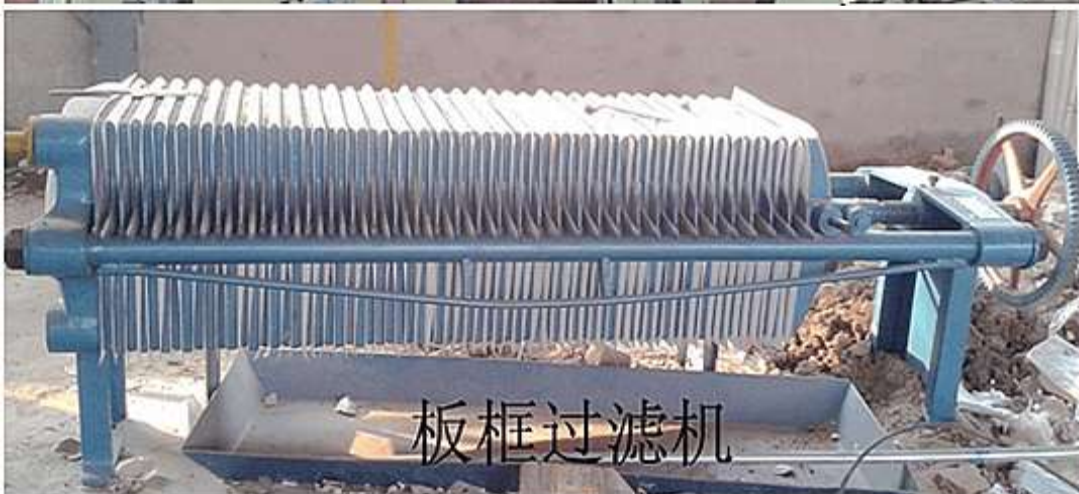
Peanut oil extraction / Refining workshop

Rotocel Extractor Machine

Frame oil filter press machine

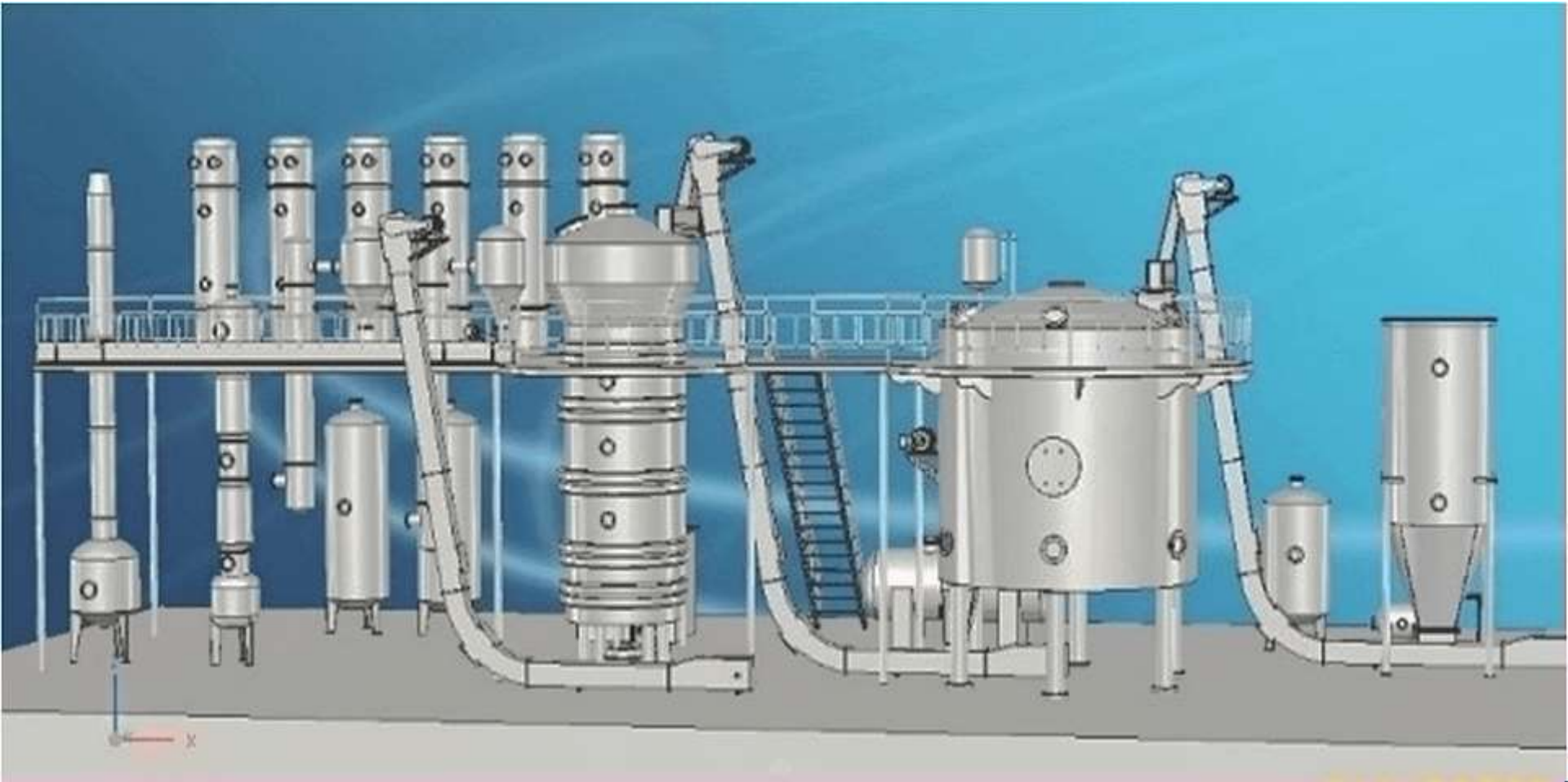
Peanut oil refining machine shop

Electric panel control cabinet



Peanut oil extraction workshop (Template Preview Design)

50 Tons per Day capacity

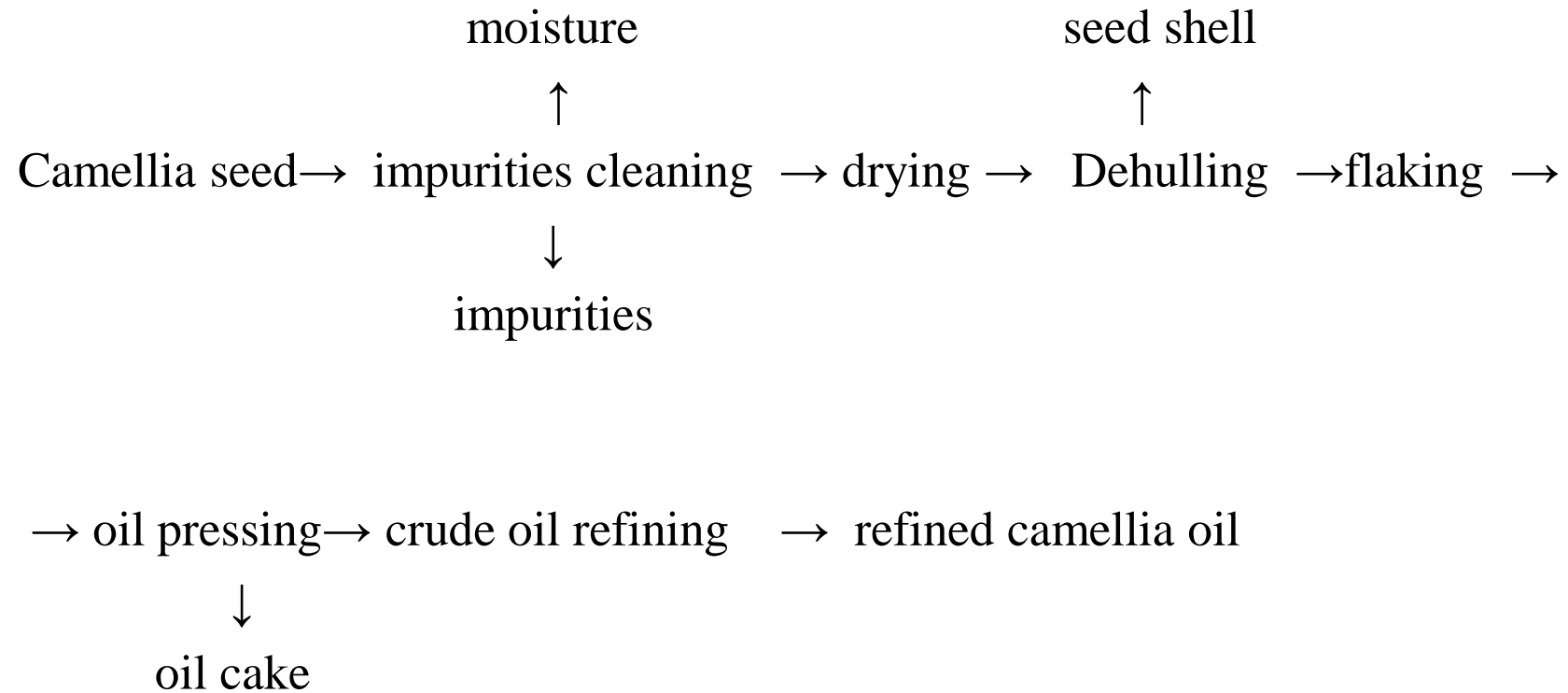




3rd Project: Fushi Co.,Ltd

**30 Tons per Day camellia oil pressing
and refining processing line**

Oil-tea camellia seed oil processing workflow





Camellia oil mill plant on scene assembling Oil expeller press and edible oil refining machine shop



Finished product oil tank

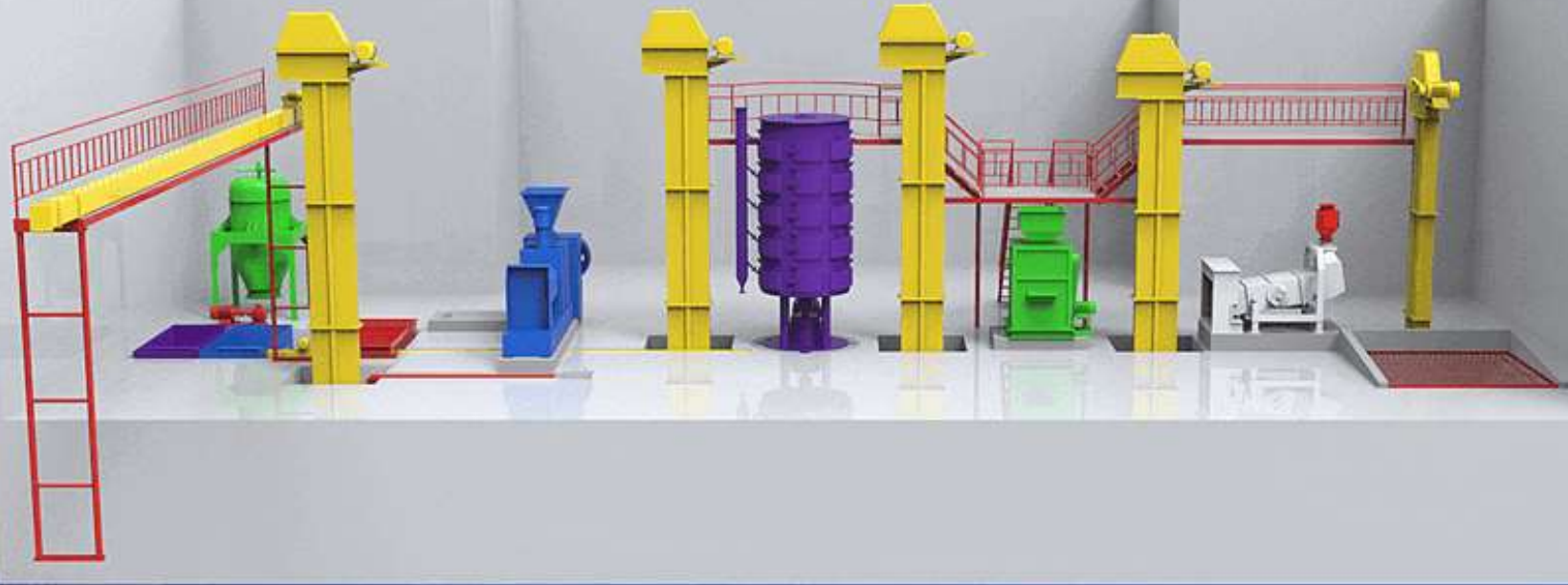


Camellia seed dehulling machine



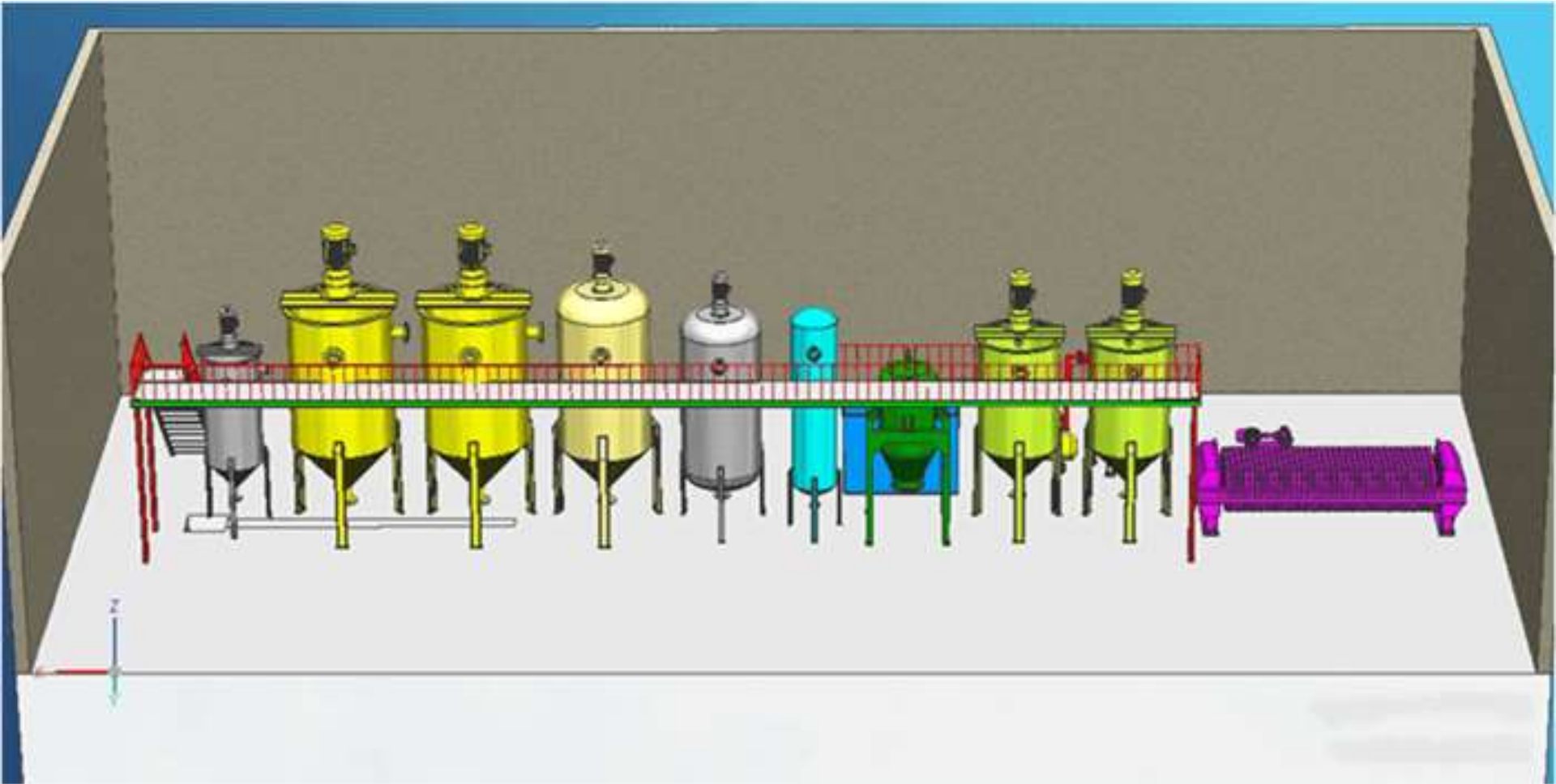
Camellia oil pressing workshop (Template Preview Design)

30 Tons per Day capacity



Camellia oil refining workshop (Template Preview Design)

5 Tons per Day capacity conform for G.B. edible oil 1st grade standard



Project processing features/advantages

- One oil expeller (Type LZY206) installed in this project, the double-teeth spiral screw structure provide excellent pressing power efficiency with high grinding rate and strong output capacity.
- It's suitable for one-time pressing various types of oilseeds with super low cake oil residual in high & low temperature conditions



LZY206 Oil expeller main Tech Parameters

Key Metrics	Applicable oilseeds						
	Corn germ	Camellia oil-tea seed	Safflower	Linseed	Sunflower seed	Soybean	Canola/ rapeseed
Method	One time pressing	One time pressing	One time pressing	One time pressing	One time pressing	One time pressing	One time pressing
Capacity Tons / Day	20—30	25—35	20—30	20—30	30—40	20—30	30—40
Cake oil residual (≤)	7%-9%	4%-5%	5%-6%	5%-6%	5%-6%	5%-6%	5%-6%



Welcome clients worldwide working with us!

Thanks for your time!

www.oilpressmachinery.com