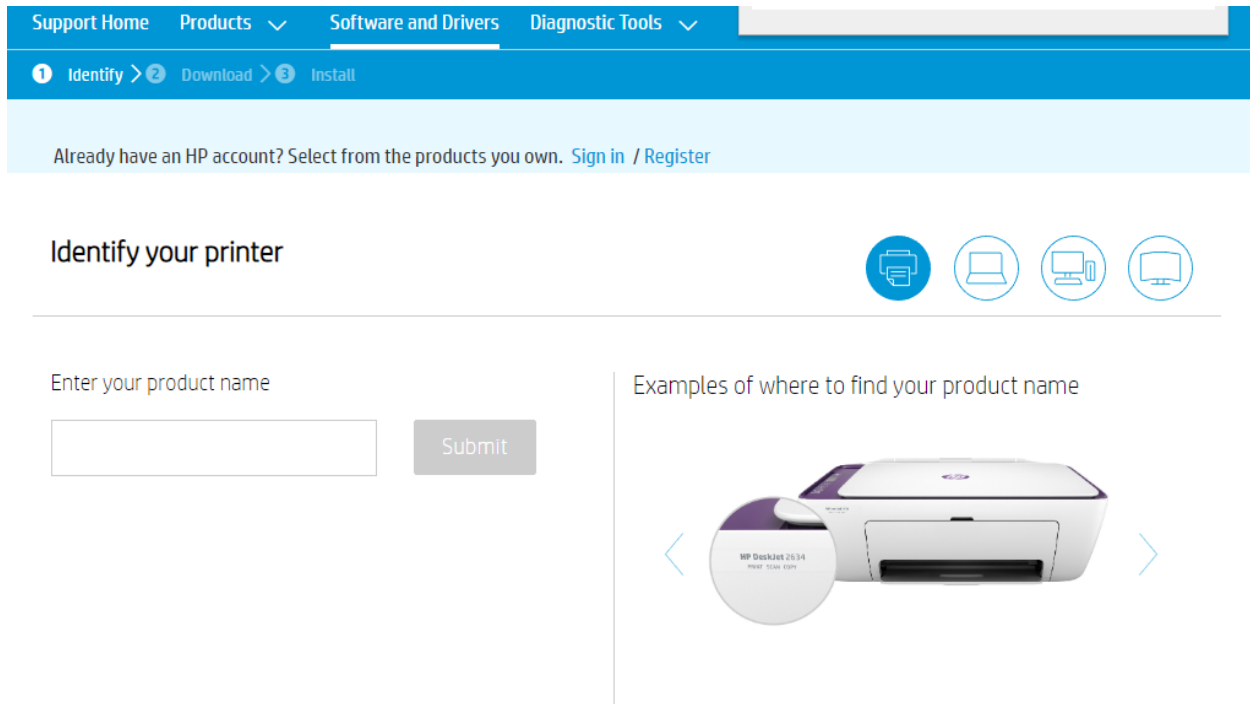


This guide will show you how to install Samsung Printer using the new version MAC OS 10.15 (Catalina)

Step 1: Go to the HP website support to download the latest driver available for your specific printer:
<https://support.hp.com/us-en/drivers/printers>



-Make sure to select the correct operating system (10.11, 10.12, 10.13 & 10.14) for Mac O.S 10.15 you can select 10.14, 10.11, 10.13 etc. (It's the same driver). Please download -Samsung SL-* Series print driver and Samsung SL-**** Series scan driver.**

Software and drivers for Samsung Xpress SL-M2070FW Laser Multifunction Printer

Choose a different product
Detected operating system: macOS 10.14 [Choose a different OS](#)



All drivers

Open all Version File size Release date

Driver-Product Installation Software (2)

Basic Drivers (2)

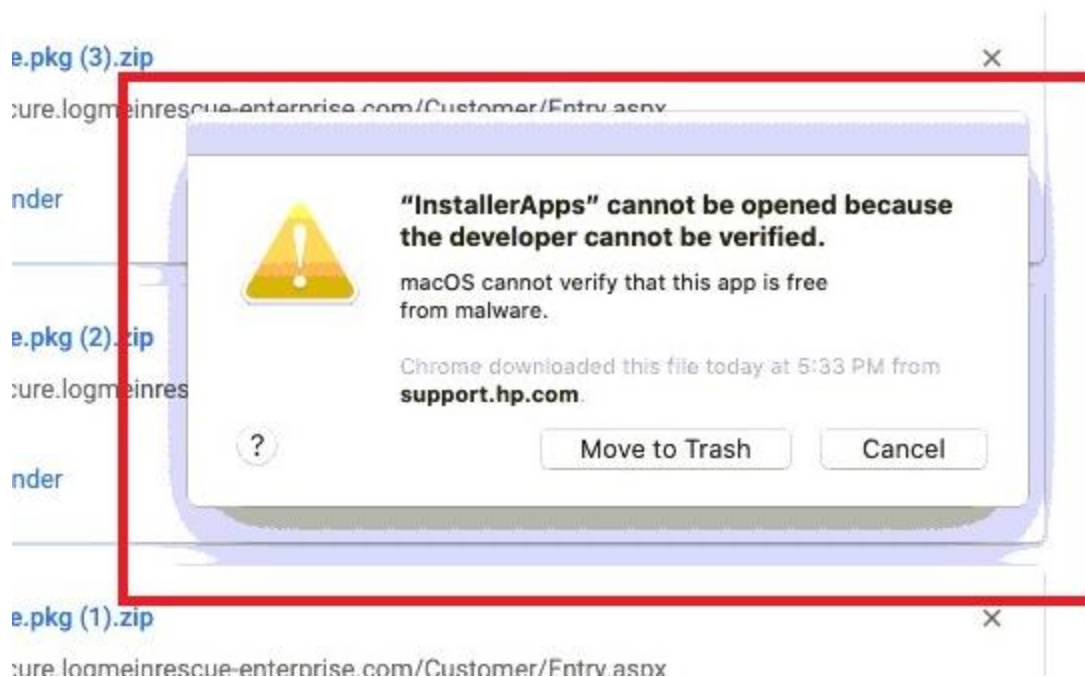
<input checked="" type="checkbox"/> Samsung SL-M2070 Series Print Driver	V1.04.01	8.4 MB	Dec 7, 2018	Download
<input checked="" type="checkbox"/> Samsung SL-M2070 Series Scan Driver	V2.31.49	50.1 MB	Dec 7, 2018	Download

Software (2)

Step 2: After downloading the drivers, please go to the downloads folder and open the Samsung Print series driver with the following folder path: **PrinterDriver > Mac Installer > MAC_Printer > Printer driver.pkg**



If you get the following error message when running the driver, the gate keeper needs to be temporarily disabled, to do so please do the following:



- Open terminal from spotlight
- Type in the following command: **sudo spctl --master-disable**
- Enter your password

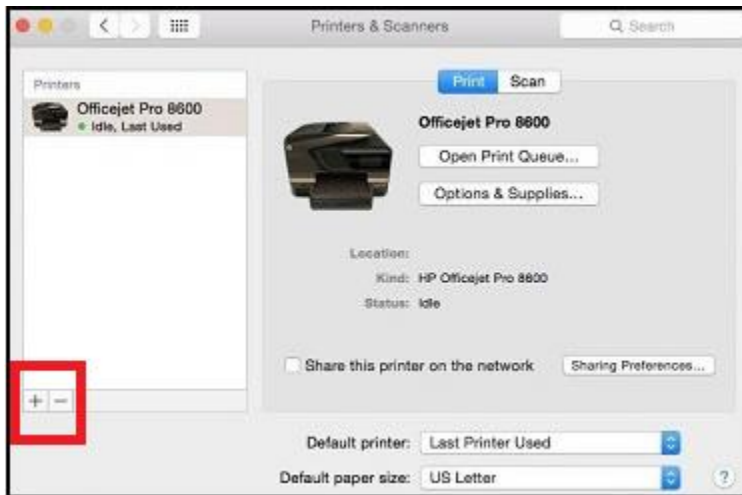
-Run the **Printer driver.pkg** again.

Once the print driver has been installed, please open the Samsung Scan driver with the following folder path and install the following PKG drivers (ICDM,ScanThru)

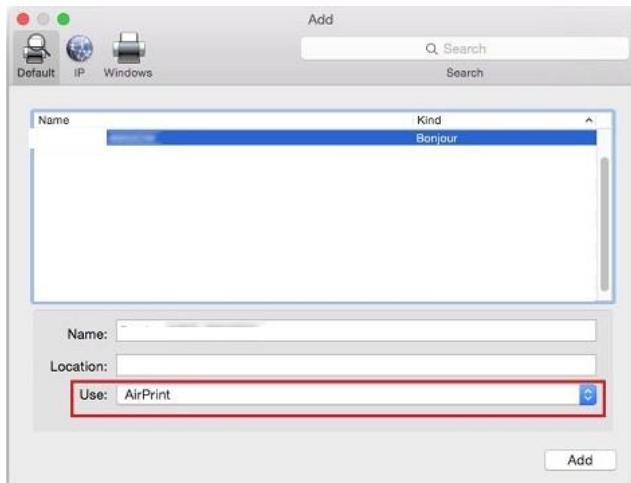
ScannerDriver > Mac_Installer > MAC_ICDM > ICDM.pkg

ScannerDriver > Mac_Installer > MAC_TWAIN > ScanThru.pkg

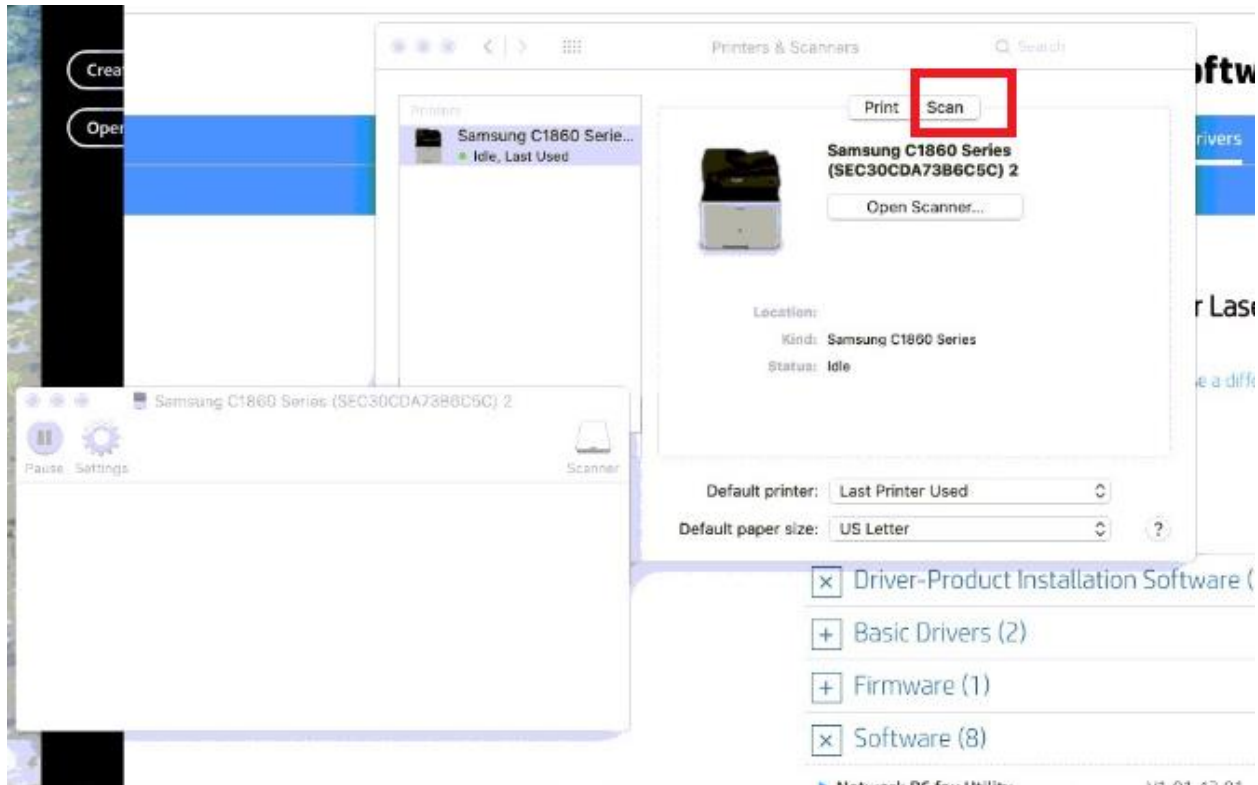
Step 3: Once the drivers are installed, go to System preferences > Printers & scanners and add the printer clicking on the + button > Add printer or scanner > Your Samsung Model >



Make sure to select the specific driver and **not AirPrint** where it says "USE".



Step 3: Now that the printer has been added, you should be able to print and scan. To scan, go to system preferences > printers and scanners > and select scan.



Step 4: Make sure to enable gate keeper (Mac security)

-Open terminal from spotlight

-Type in the following command: **sudo spctl --master-enable**

-Enter your password