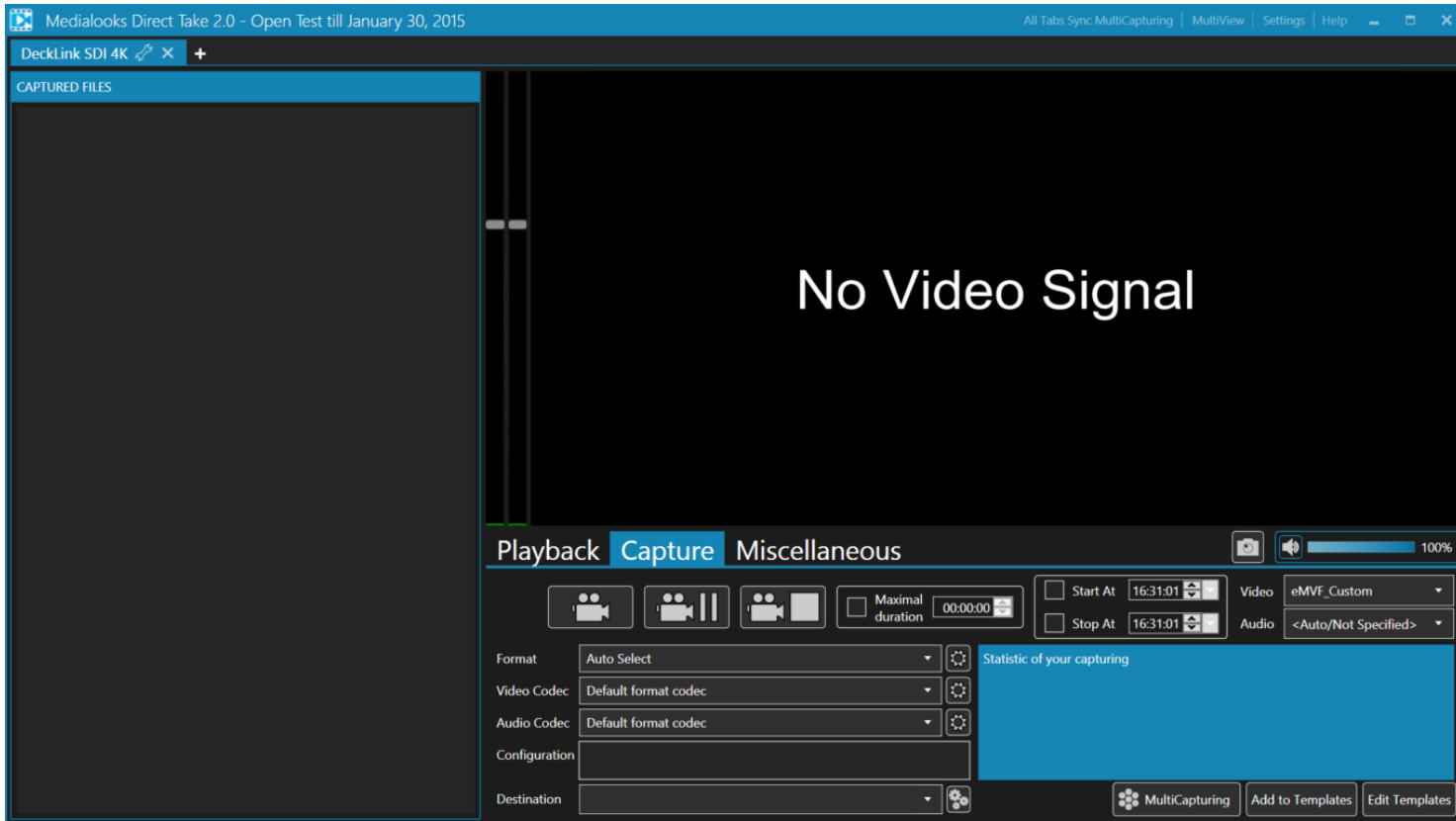
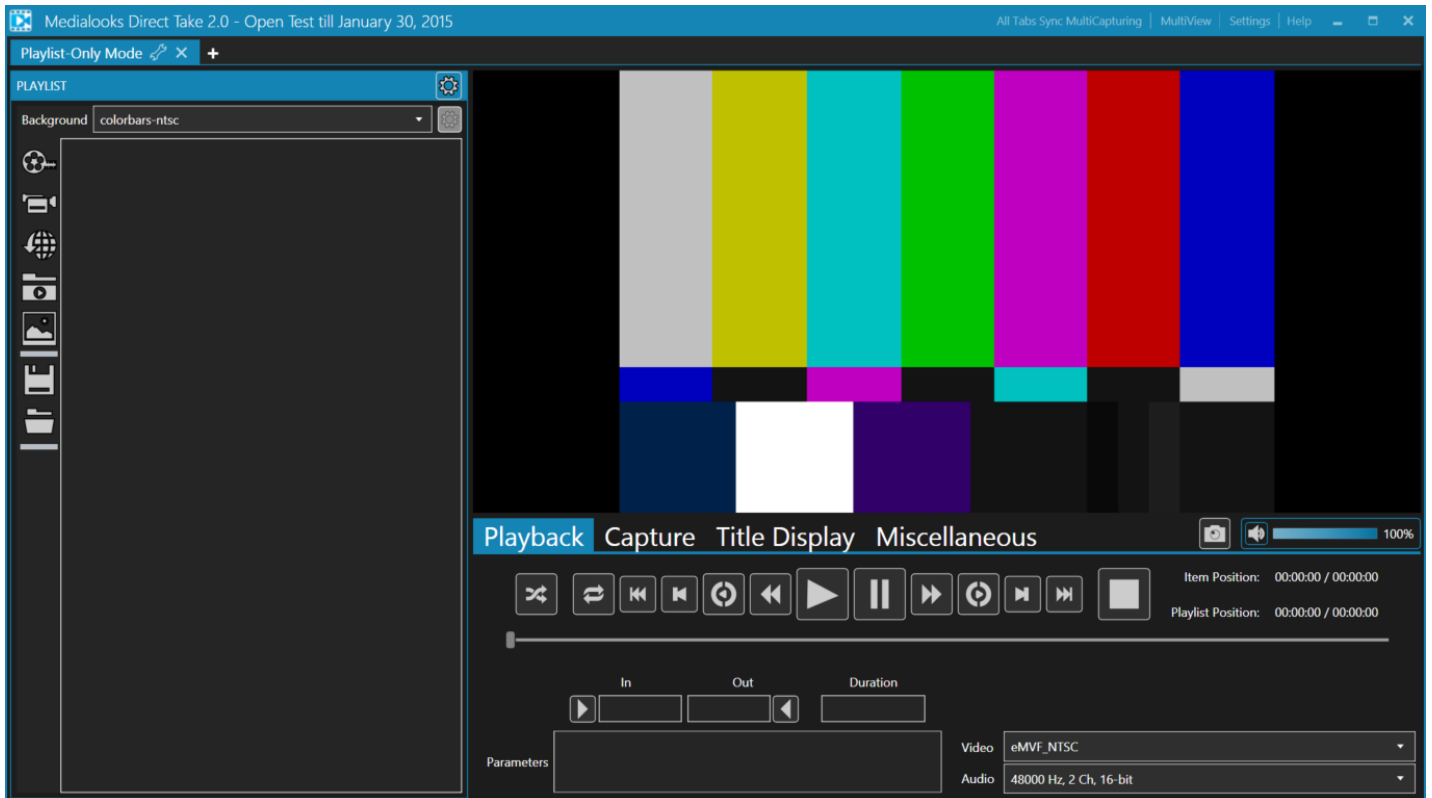


Direct Take Short Guide

When you start Direct Take it looks like



On the first start it opens the first available device. In my case, it is Decklink 4K SDI. If there is no device on your machine – Playback-Only mode will be opened:

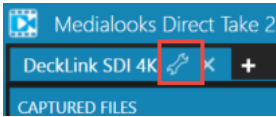


Direct Take is complex application so I will describe each part separately.

For each opened device there is a separated tab. Like in any web-browser.

Tab Settings

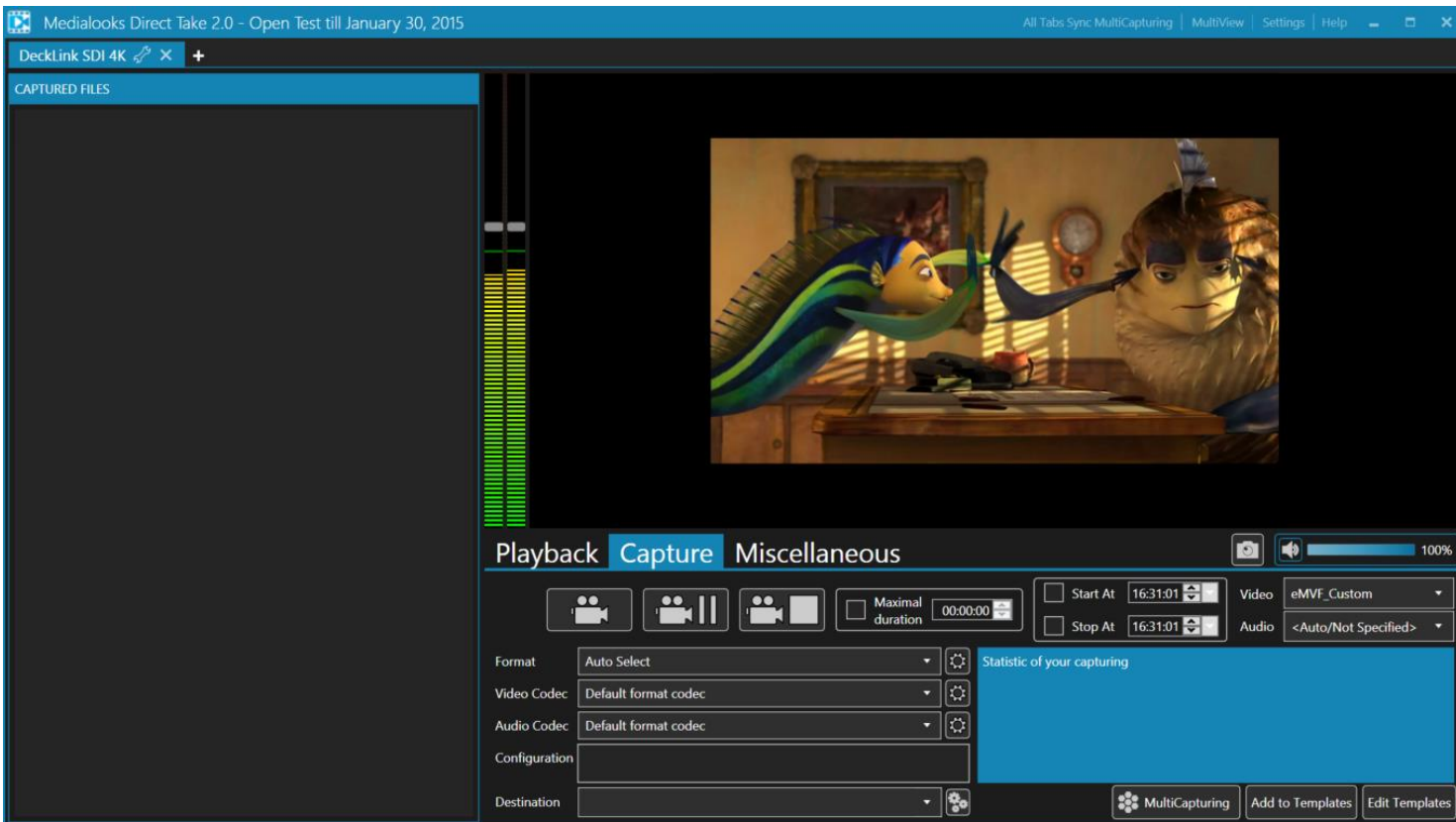
To open Settings for the current device (or for a playlist if you use Playlist-Only mode) to set input lines and formats you should double click on the tab header or click Settings button:



Device Selector menu will be shown (and settings for playlist in Playlist-Only mode – this will be described further):

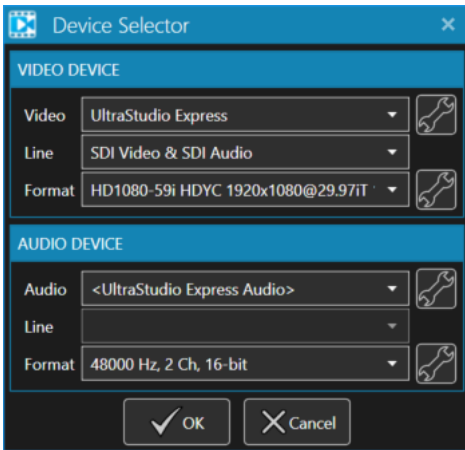


Here it is possible to set up the current device parameters. The Settings buttons here (with spanner icon) open properties for DirectShow devices (like web-cameras). By setting required format, input stream is received:

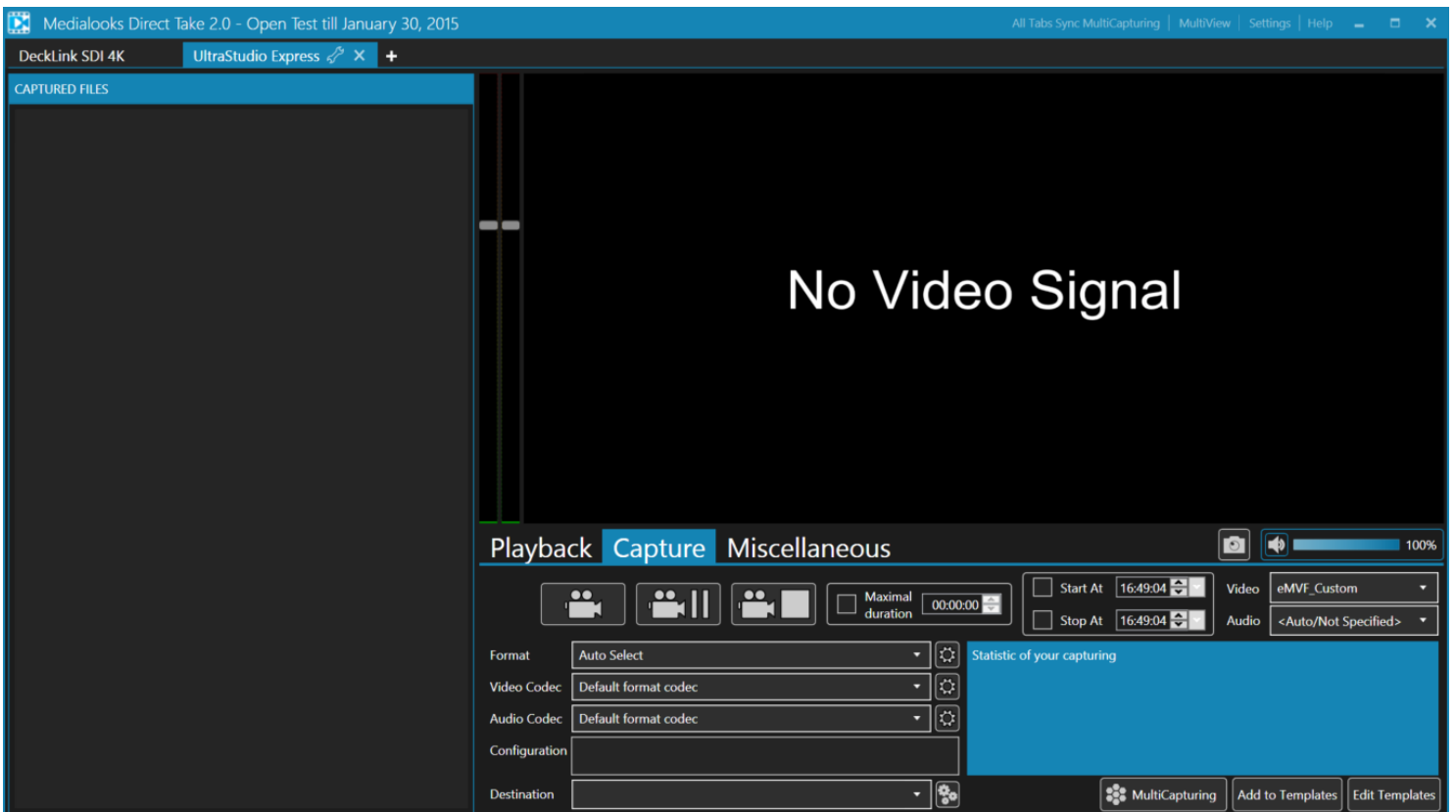


Device is configured correct.

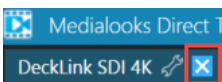
Click "+" tab to add a new tab. Device Selector will be shown where you will be able to select required device:



Select required device and its parameters and click OK button to create a new tab for the device.



To delete a tab and close device you should click on **Close** button (with cross icon)

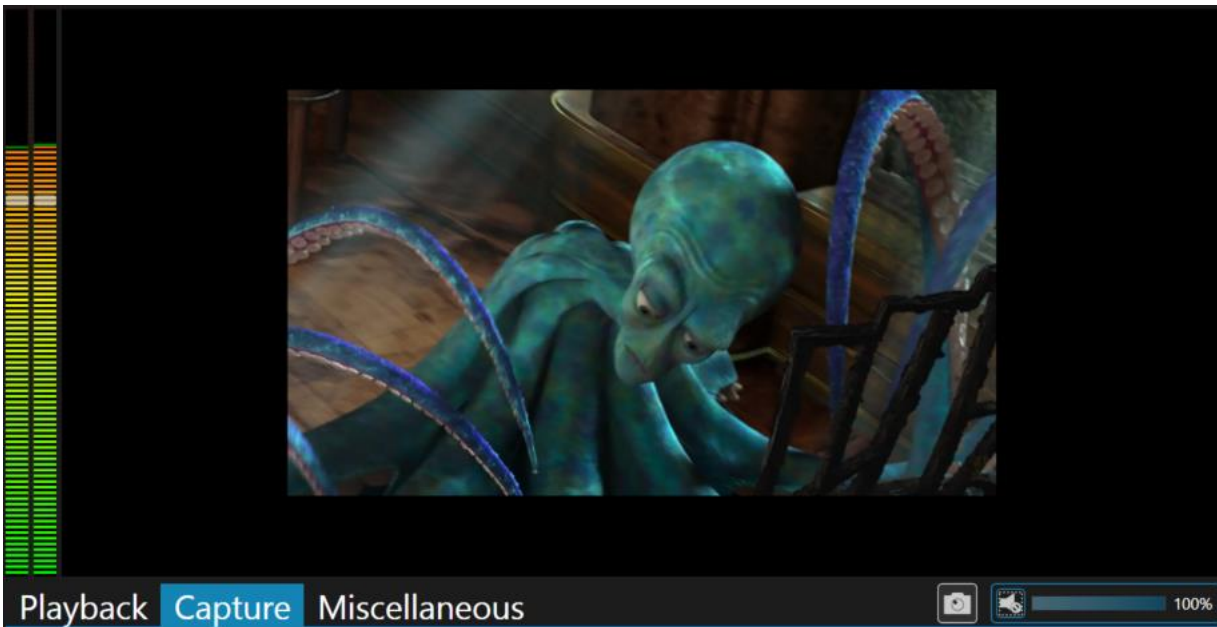


Direct Take will ask you to confirm the action and if you confirm it, the tab will be removed. Close the last tab means to close the application.

Tab structure

Each tab contains Preview part, Tools part and List part.

Preview part:



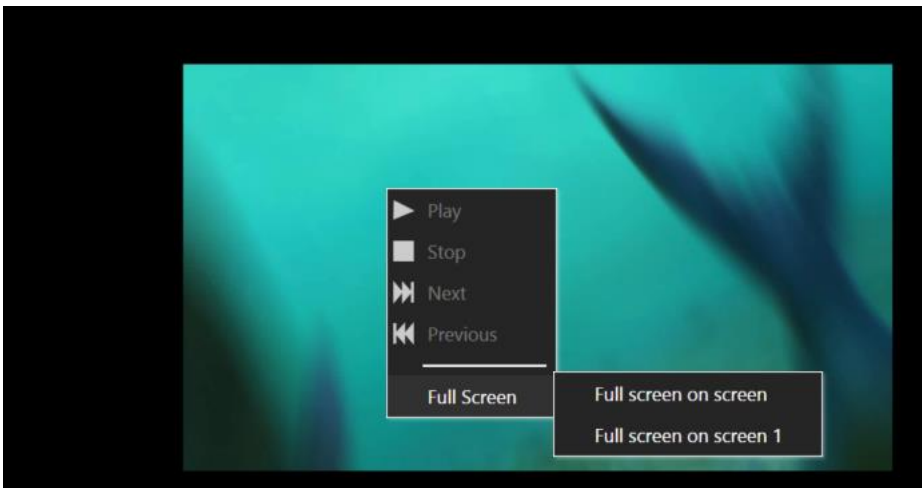
Preview part contains audio meters to monitor audio, the preview panel, volume controls for preview and a button to capture frames from source object.

Audio meters allows you to manage each channel gain by dragging a slider:



Preview panel just displays the content of your stream (playlist or live source).

It also contains a context menu:



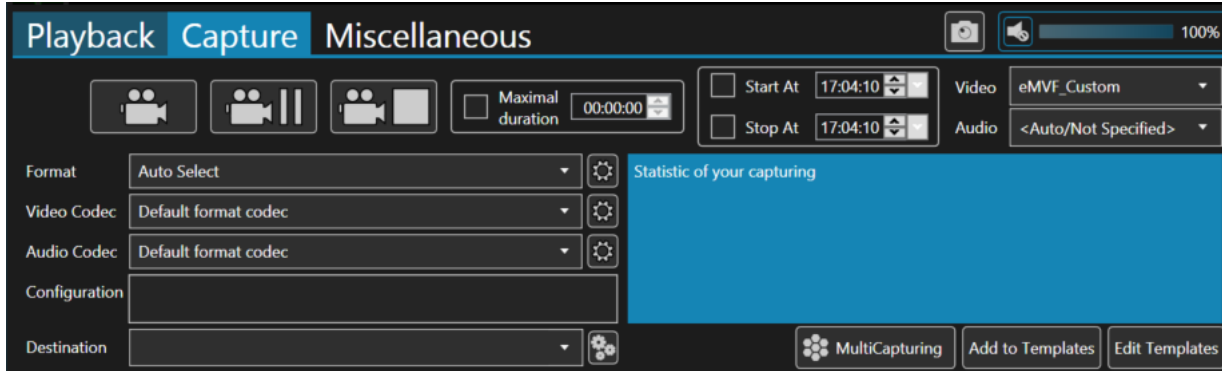
Where you can manage your playlist (if you work with playlist) and show preview on full screen mode.

Volume controls allows you to manage preview volume and mute it.

Frame capturing button saves a current frame from the source object (playlist or live source) to image file (BMP, JPG, PNG or TIFF).

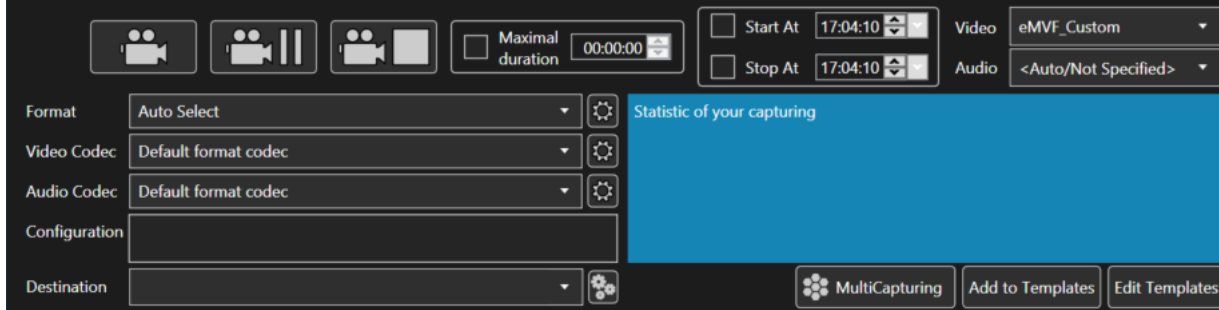
List part contains list of captured files in Capture mode (live source) or playlist items and controls for playlist management (it is described below).

Tools part:

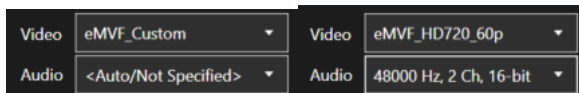


The main part of each tab. Here you manage in what mode you work – receive a live stream (Capture mode) or send a stream to output (Playback mode). Other tabs in this part are for miscellaneous features (color management, graphic overlay).

Capture mode:

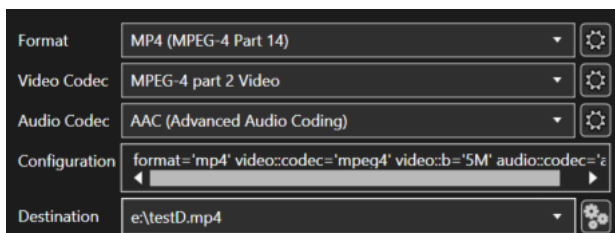


Here you can manage the live source capturing. You can convert source to any required video and audio format by selecting here:

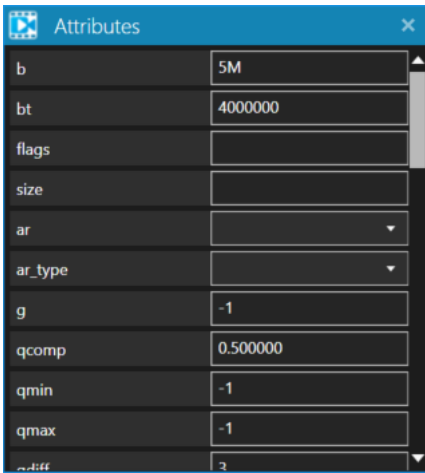


The main task for Capture mode is encoding to files or network streaming.

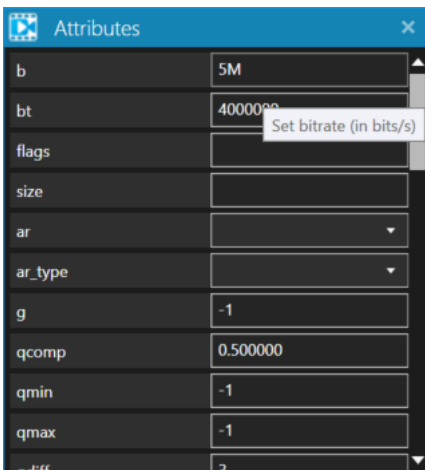
To start encoding you should select required format and codecs for capturing and set destination.



Gear buttons for **Format**, **Video Codec** and **Audio Codec** open a menu where you can set additional attributes for capturing (bitrate, profiles, video size, aspect ratio etc):



For each attribute, there is a tooltip with description:



Gears button for **Destination** open a Save File dialog to set a capturing destination.

Full configuration is in **Configuration** field. You can type your own configuration to this field for encoding.

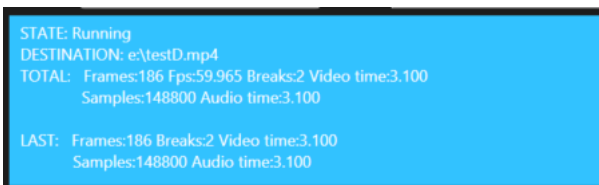
These buttons realize management of encoding process:



Start Capture, Pause Capture and Stop Capture.

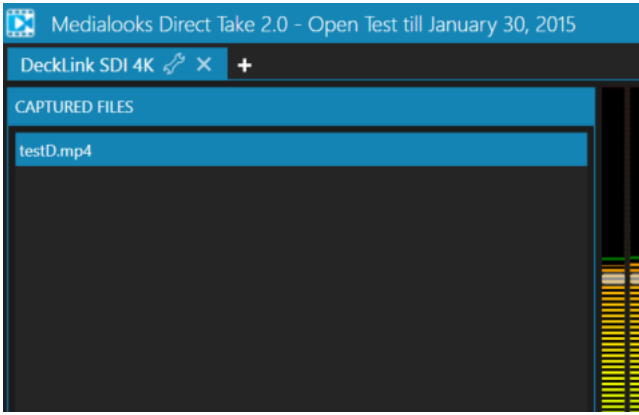
Start Capture button icon indicates the state of capturing: it is grey when capturing is not running, it is yellow for pause and it is red for capturing.

The statistic of encoding is here:



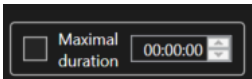
It shows number of captured frames, duration, number of audio samples etc. and state of encoder (here it is **Running**).

When you stop the encoding, the captured file is listed in **List** part:

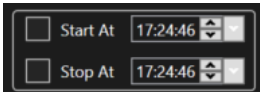


Right click on the item opens a context menu to open a file in Windows Explorer.

Maximal duration allows you to set a maximal duration for the encoded file. If capturing is longer than this time a new file will be created with _0001, _0002 etc. suffix.

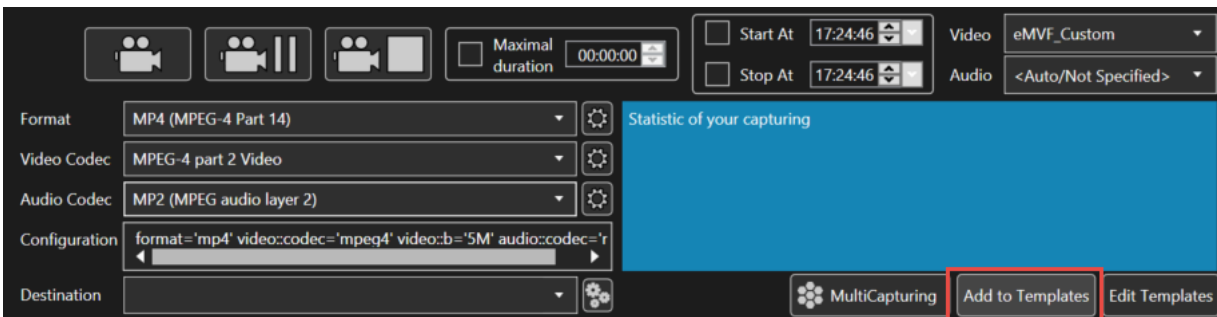


Start At and **Stop At** allows you to schedule capturing by setting required time for start and stop

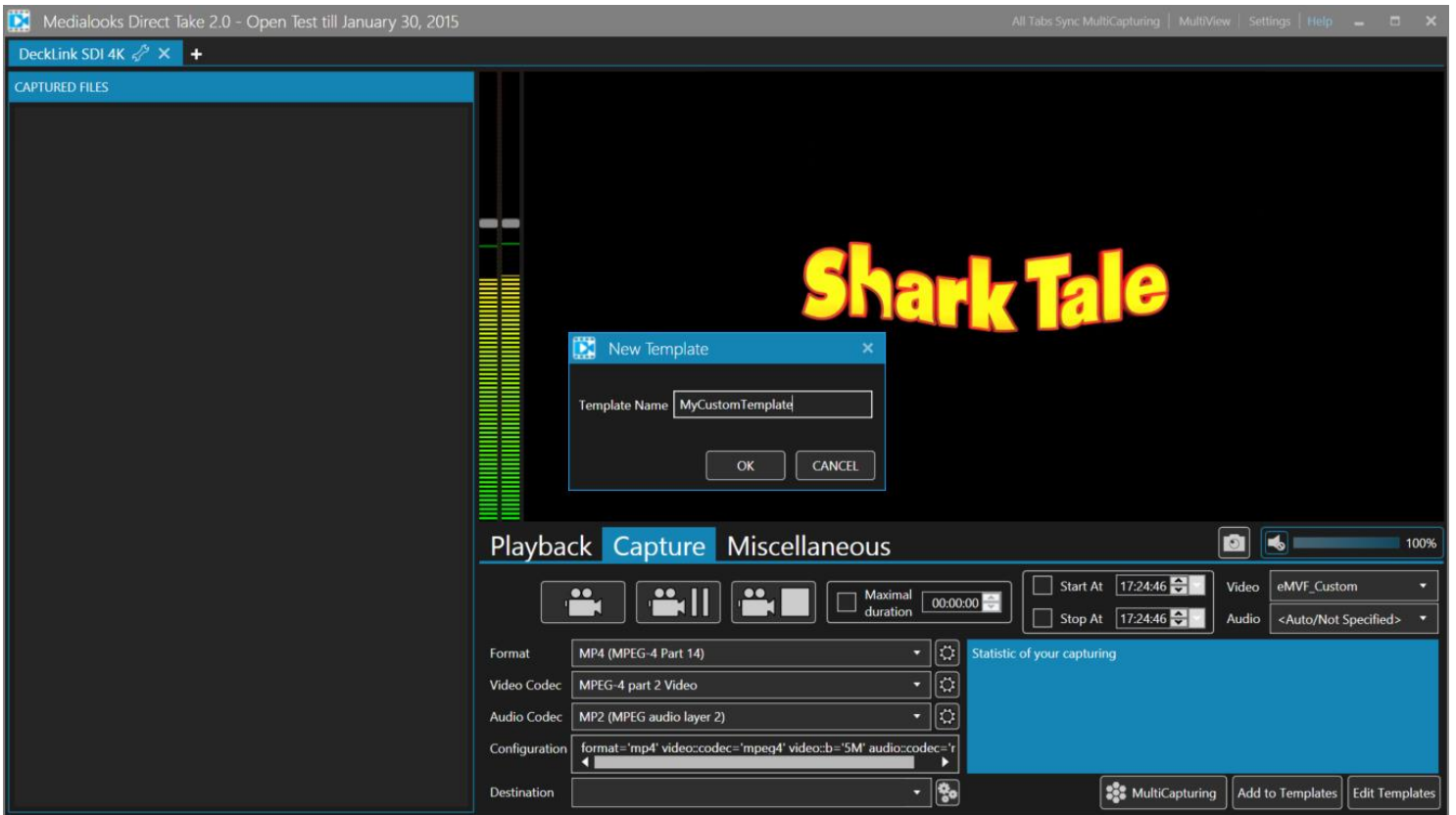


Templates

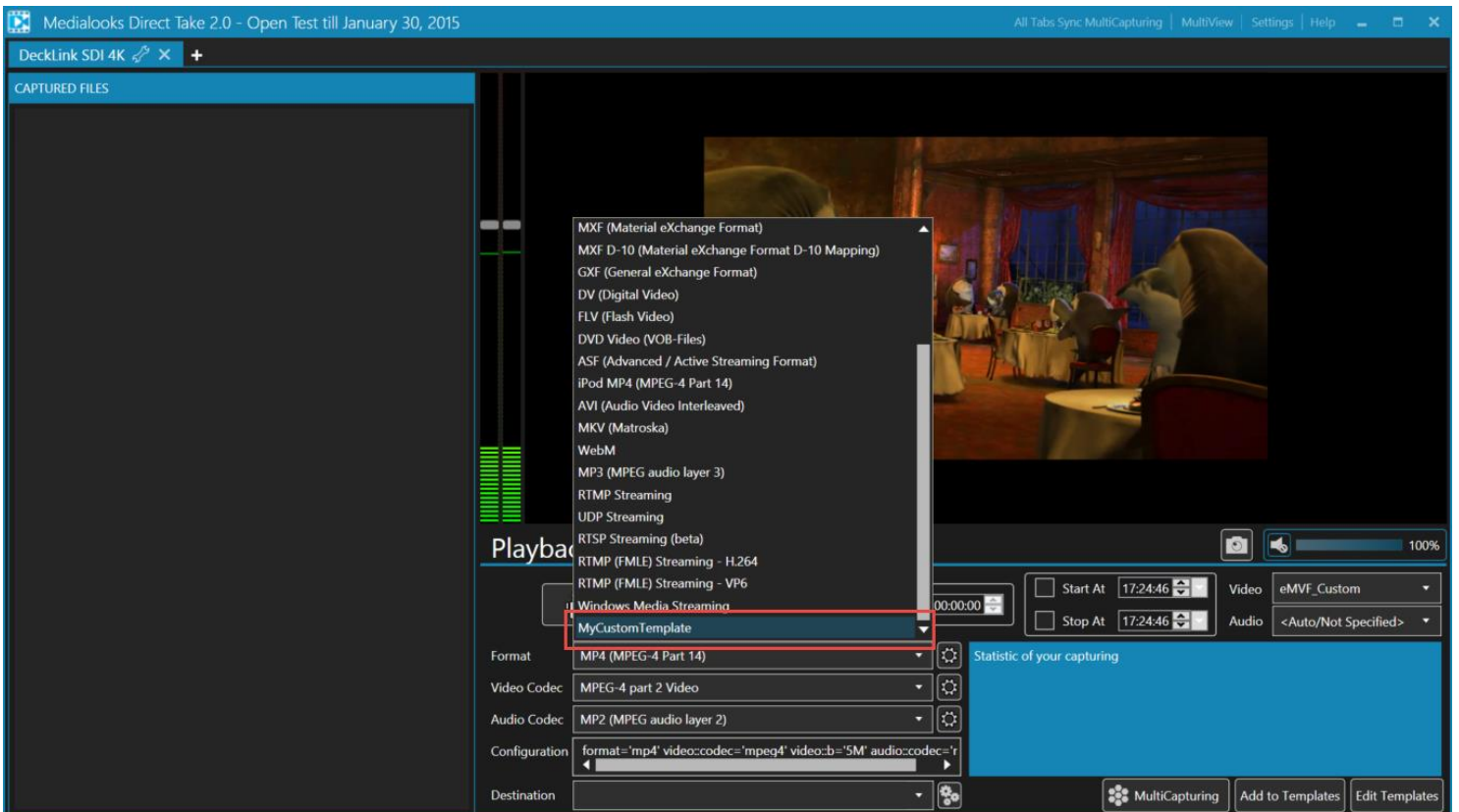
Commonly used configuration can be saved to templates to use them in the future without long preparations. Create a required configuration and save it as template by clicking **Add to Templates** button:



Type a name for template and click OK button to save it:

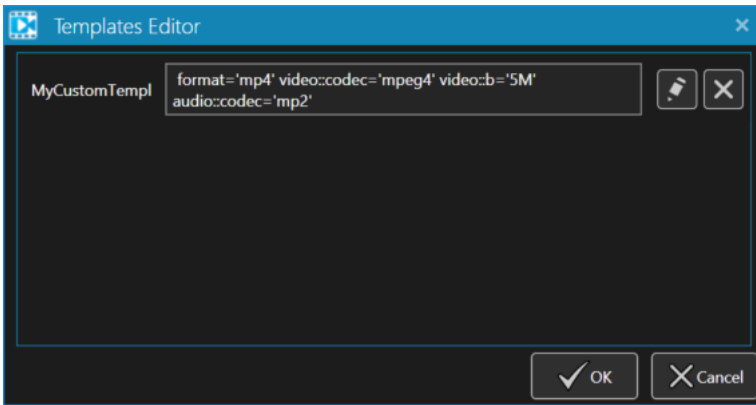


Now the template is available in **Format** list:

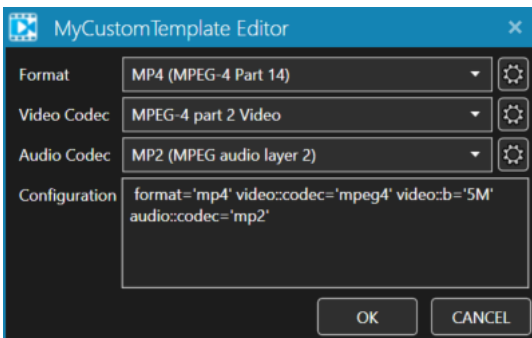


You can select it in any time.

To edit a templates you should click on Edit Templates button. A menu with list of templates will be shown:



Here you can remove a template (cross button) or edit it (pen button). Click OK button to save results. Templates will be updated for all devices. Click pen button to open template editor:

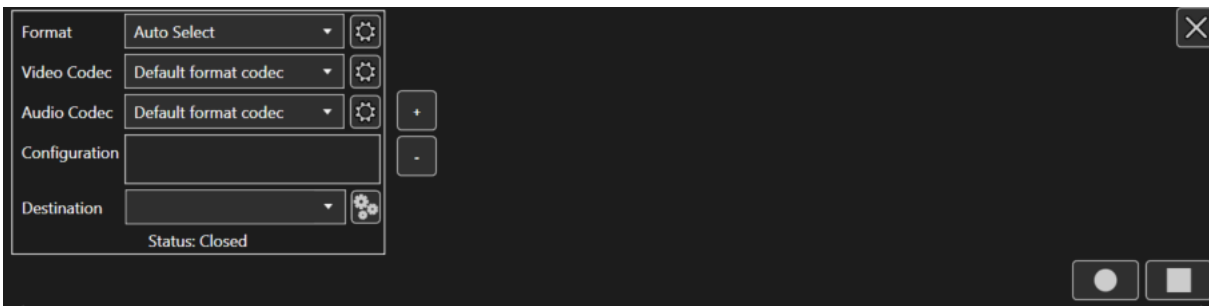


Here you can modify it: change format, codecs and attributes. Click OK to save changes for the template.

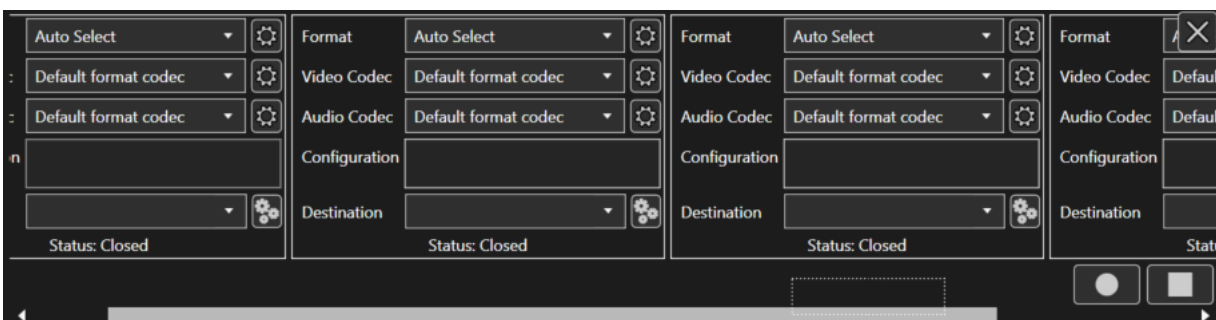
MultiCapturing

One more interesting feature is ability to capture many files at the same time. The capturing is frame-accurate synchronized so you can compare files after capturing is over.

Click **MultiCapturing** button to open a control panel:



By default, it contains just one encoder. Click on "+" button to add a new one. And "-" to remove the last one. It is possible to create as many encoders as your machine can take. Multicapturing is up to hardware feature.



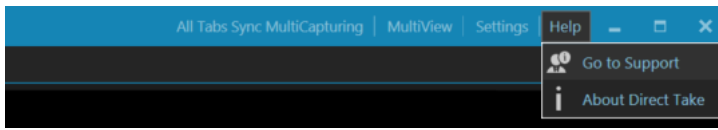
Here is 4 encoders for just single source. Configure each encoder and set destinations like for a simple capturing.

Click on **Circle** button to start sync capturing. **Square** button stops the encoding.

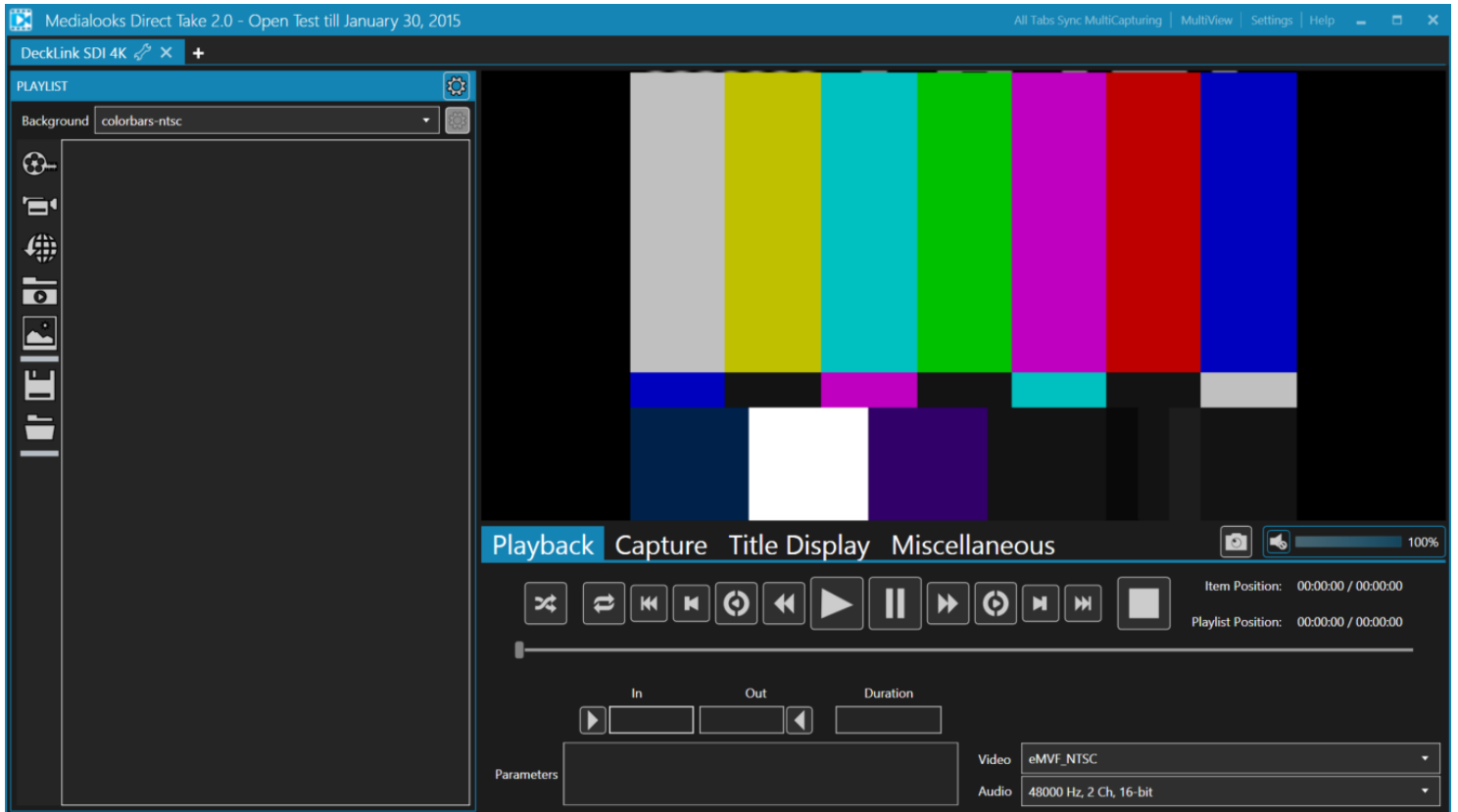
Cross button in top-right corner of the panel will close the capturing and returns you back to normal capturing mode.

That's all for Capture tab. If you need more detailed information about encoding, please contact us:

Click Help->Go to Support in main menu

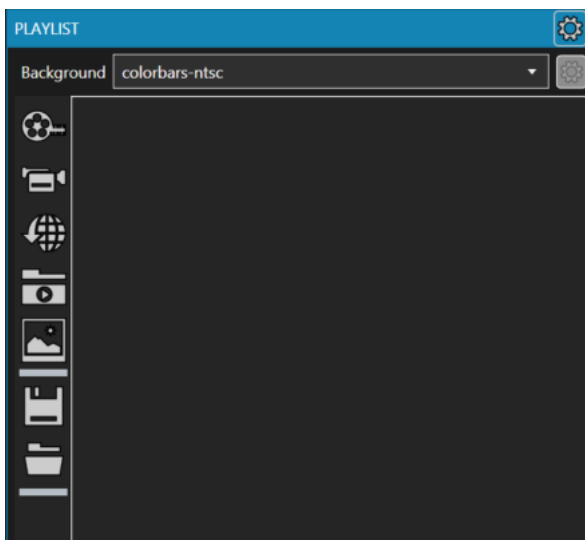


Playback mode



The preview part for this mode is the same. Other parts are different.

List part:

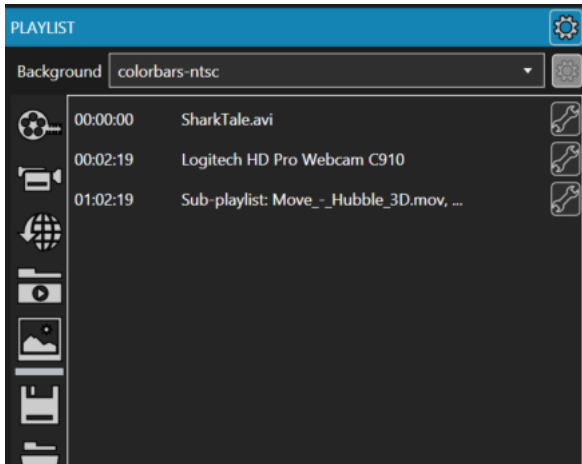


It contains all the playlist content. You can add files by simple drag and drop them to the list or by clicking **Add File** button.

You can add the following to a playlist:

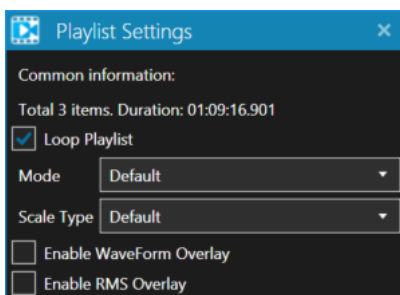
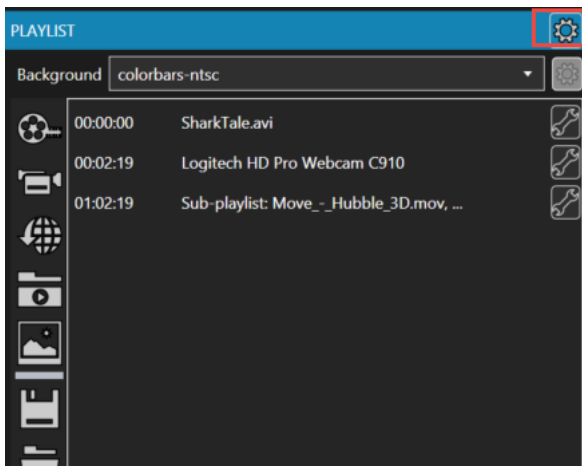
1. Files;
2. Live sources;
3. Network streams
4. Sub-playlists;
5. Image Sequences;

Here is example of playlist with file, live source and sub-playlist:



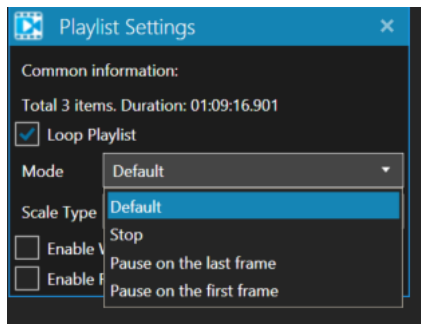
To save the playlist you should click **Save** button. To load a playlist please click **Load** button.

It is possible to manage the playlist settings. Click Gear button to open a menu:



It contains common information about a playlist (number of items and total duration). Here you set **Loop** property for playlist.

Mode list allows you to set behavior of playlist:



Default – playback will continue after the current item is over

Stop – playback will be stopped

Pause on the last frame – playback will be paused on the last frame of the current item

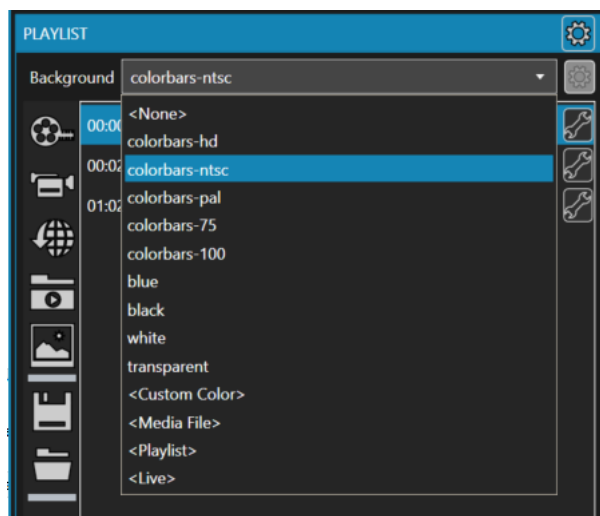
Pause on the first frame – playback will be paused on the first frame of the next item

Scale type sets scaling for whole playlist.

Enable Waveform Overlay and **Enable RMS Overlay** allows you to display audio meters right on the playlist video (it will be sent to device output):



To set another background for playlist, select it in **Background** list:

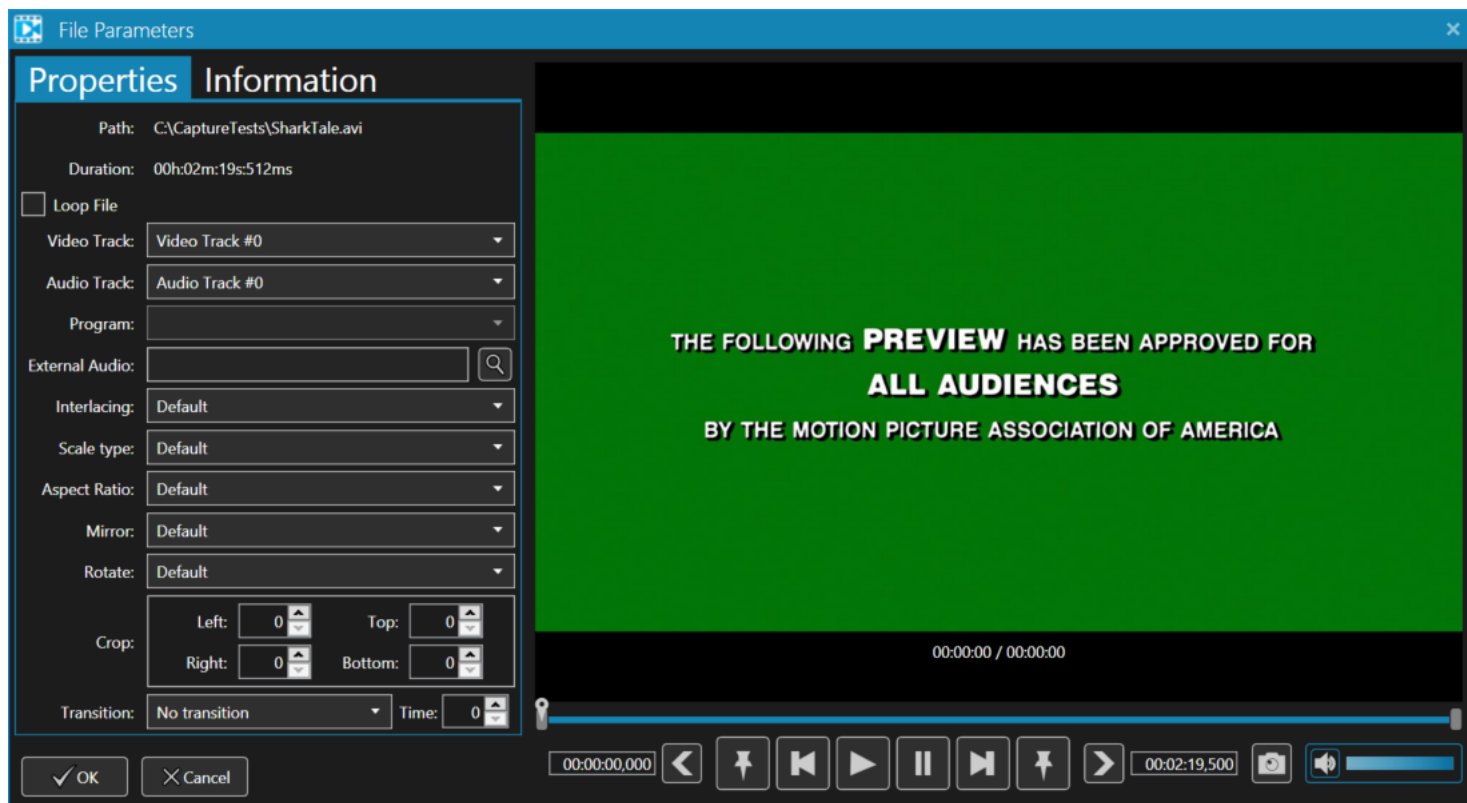


It contains some colorbars, colors. Also you can set any file, list of files or live source as background for the playlist.

To reorder items in playlist just drag and drop them in required position.

Spanner buttons for each playlist item open a dialog with parameters for the items:

File Properties:



Here you can get information about file and set its properties:

Loop mode for the item

Video Track, Audio Track, Program (for transport streams)

External audio track (select MP3 file for example to mix it with the original audio).

Interlacing type, scaling, aspect ratio

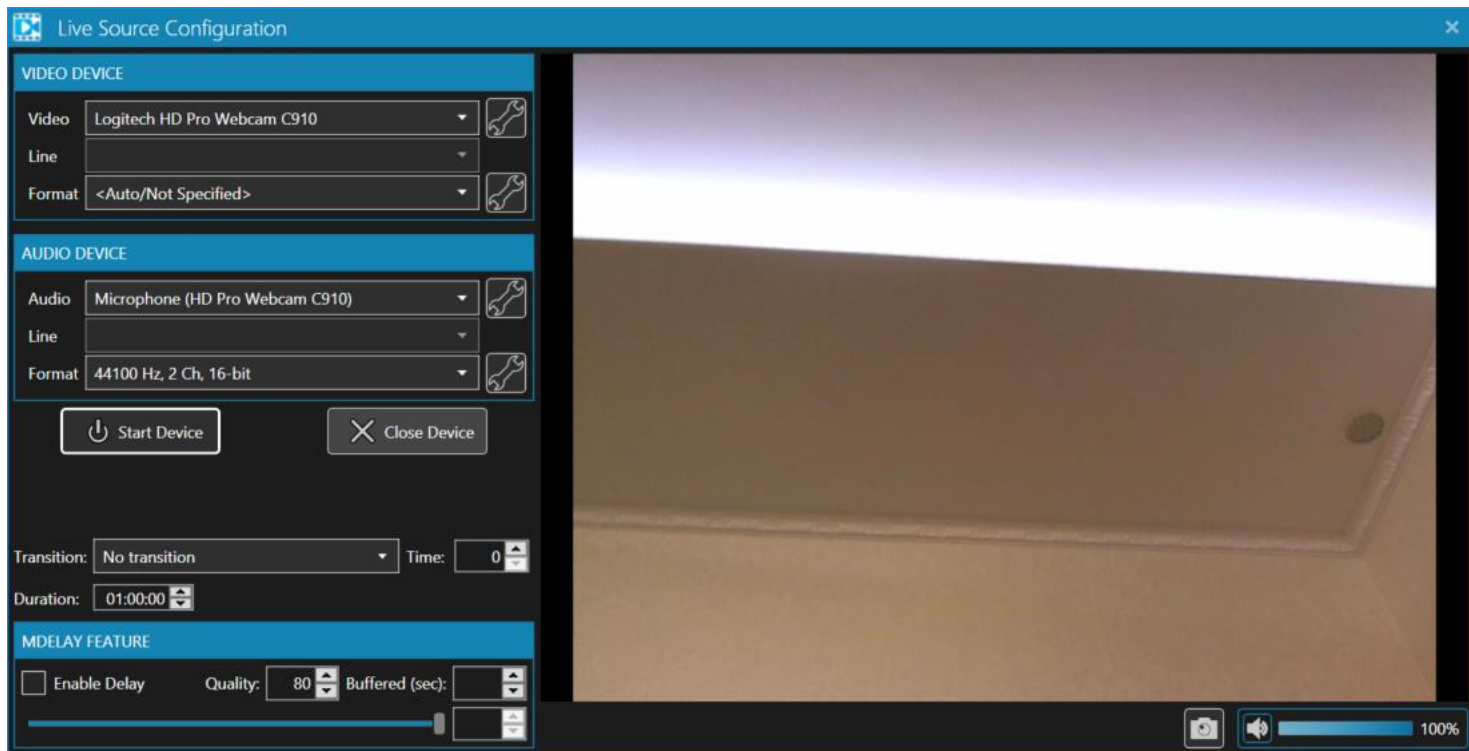
Rotate, mirror file, crop video (each value is in pixels)

Transitions – playlist switches the file with selected transitions for the time that you set.

Preview also allows you to save frames from file and manage preview volume.

It is possible to play the file, pause it, play it frame by frame forward and backward. Pin buttons allows you to set current position as In (left pin) and Out (right pin) points. Also to trim the file you can drag double slider values. “<” and “>” buttons sets In and Out points according to the time that is set in left and right fields.

Live Properties:

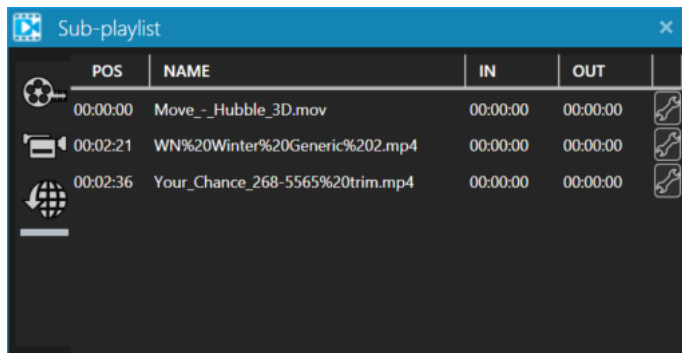


Device settings are similar to Device Selector dialog. **Start Device** initializes the device and **Close Device** button closes it. Transition are the same as for file properties.

Duration sets the duration of the item in playlist.

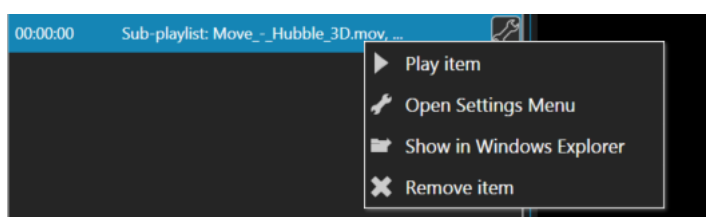
MDelay Feature allows you to delay live source for required time. **Enable** it, set its **Quality** and set delay value by dragging the slider.

Sub-playlist properties:



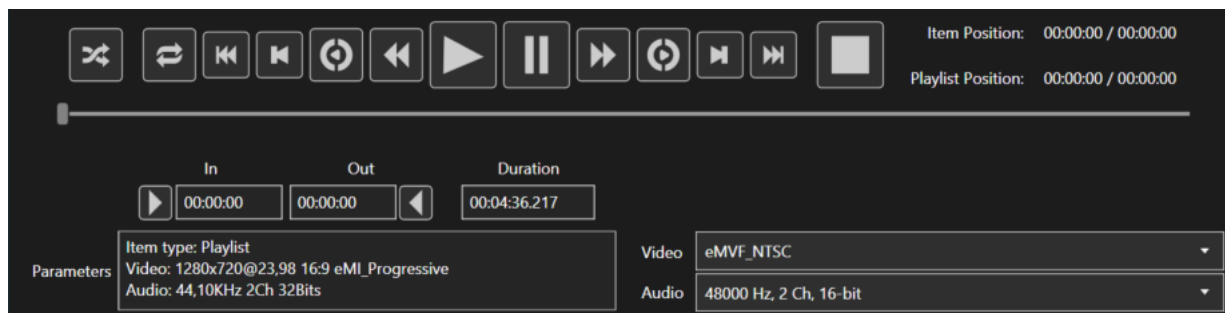
Allows you to add files, lives and URLs to sub-playlist. Here you also able to manage each item properties (spanner buttons) and In and Out points.

To remove item from playlist just click Delete button on your keyboard or open a context menu for the item:



It allows you to start playback of the item, open its settings. If it is a single file, you can open it in Windows Explorer. Or remove the item.

Playback controls:



Like for Capture mode here you can set video and audio formats for playlist:



Parameters field shows you common information about a selected playlist item: its type, its input video and audio formats.

Control buttons:



In the order from left to right:

Shuffle playlist mode

Loop current item

Go to previous item

Frame back

Slow Reverse playback

Fast Reverse playback

Normal playback

Pause

Fast Forward

Slow forward

Frame forward

Go to next item

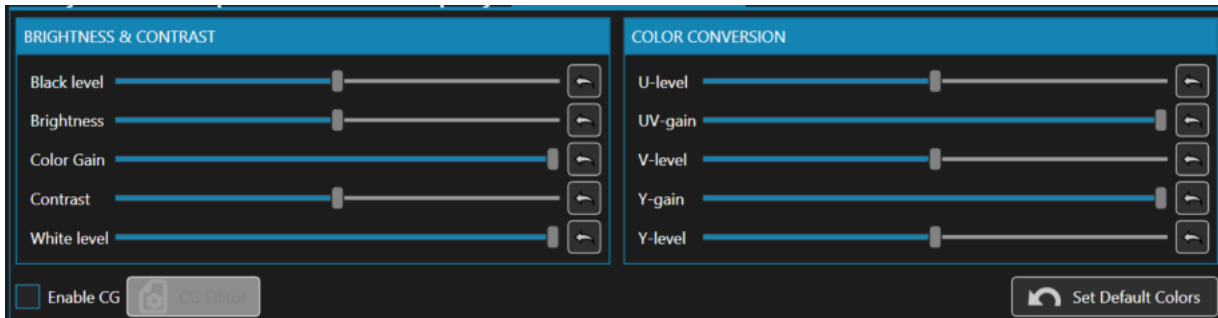
Stop playback.

Click on slider to make seeking.

That's all for Capture tab. If you need more detailed information about encoding, please contact us:

Click Help->Go to Support in main menu

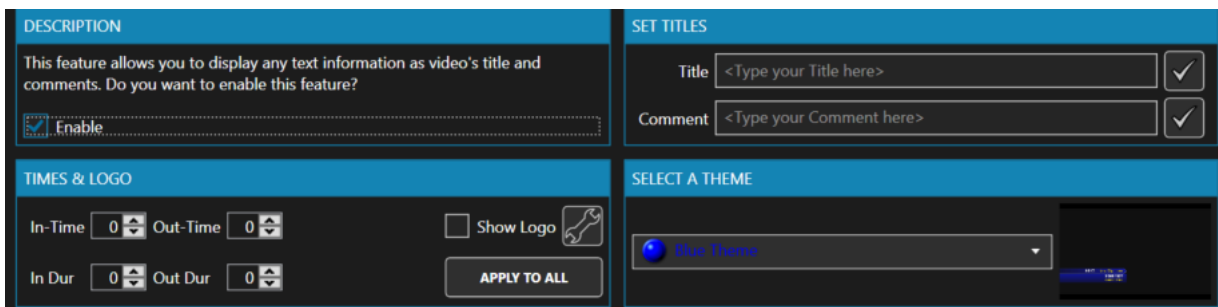
Miscellaneous Tab:



Here you can manage colors conversion, brightness and contrast. Change slider values to see the effect. **Set Default Colors** button returns all sliders to default values. Also it is possible to return each slider to default value separately (by button near each slider)

Set Enable CG adds Character Generator plugin to current object. **CG Editor** button opens CG Editor.

Title Display Tab:

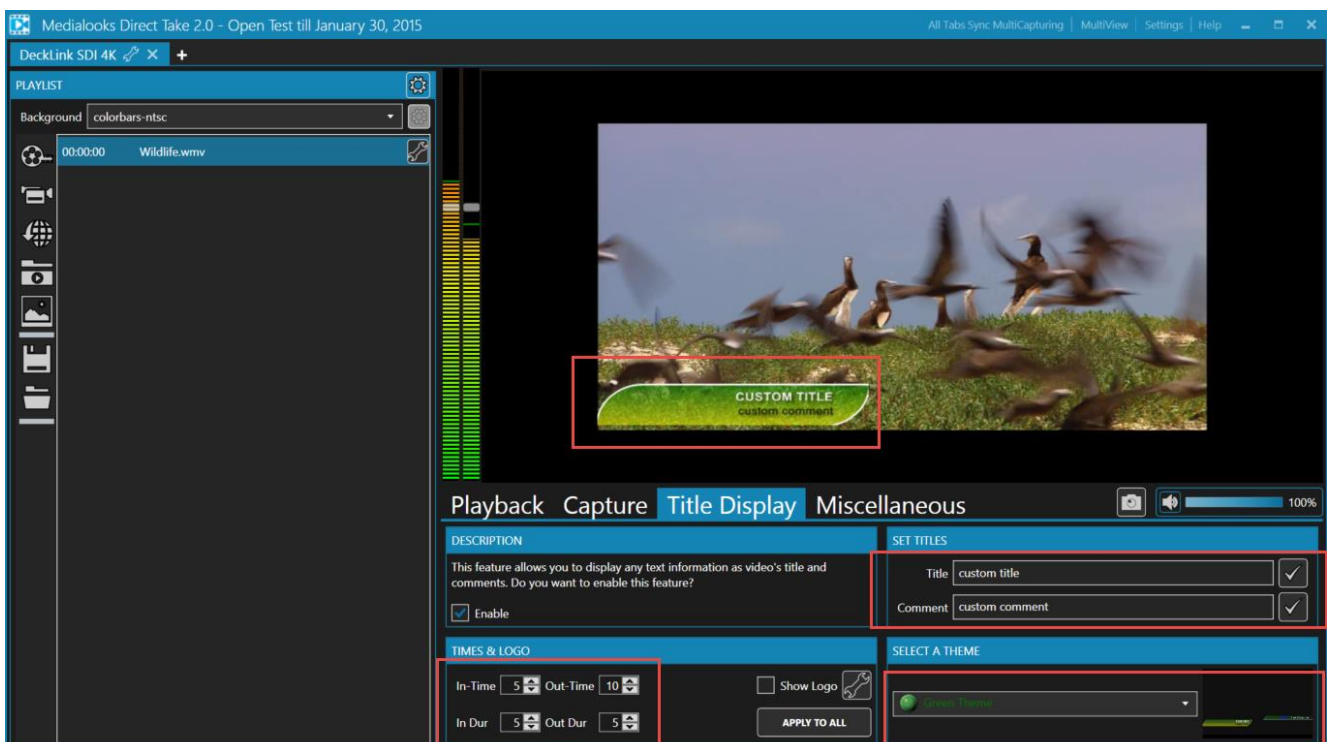


This feature possible only for Playback mode. It allows you to display custom information while video playback.

Enable this feature to be able to work with it.

Times&Logo part manages the time intervals and positions (in seconds) when and how long required information will be displayed. Also you can select a logo to be displayed for playback. **Apply to all** button applies the time settings and logo for all playlist items.

Select and item in playlist. Then type required text as Title and Comment in the fields (click V buttons to apply changes) and select a theme (Blue, Green or Lilac).



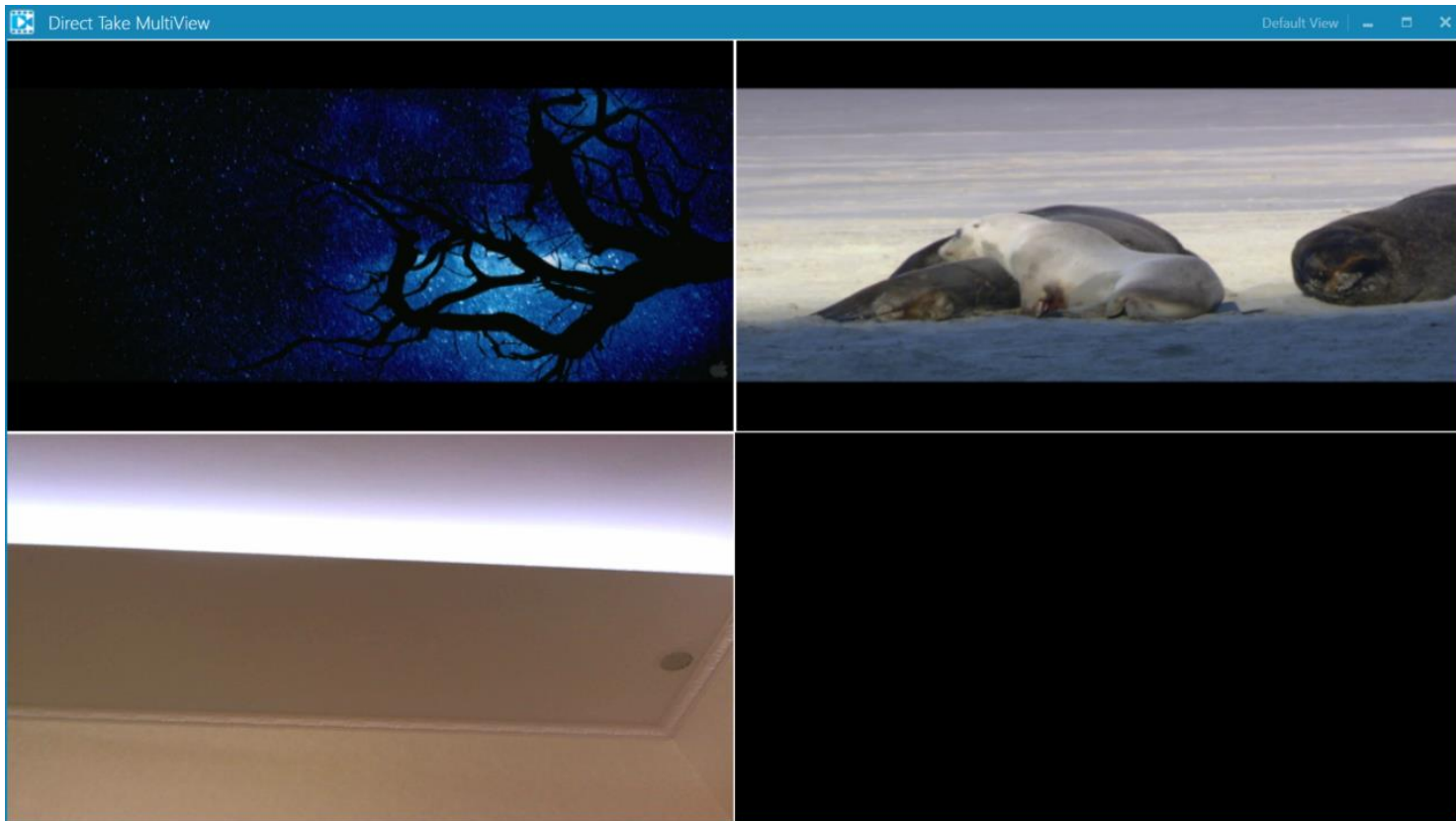
That is all for the Tools.

Look at the Title bar of Direct Take.

There are additional buttons here:

All Tabs Sync MultiCapturing – by clicking this button all the tabs that are in Capture mode starts the encoding. If something is not prepared for start it shows you a message. The capturing is also sync for all tabs. By default you are able to stop each of them manually. But if you want to stop it in sync too for all the tabs you should go to Direct Take Settings (see below).

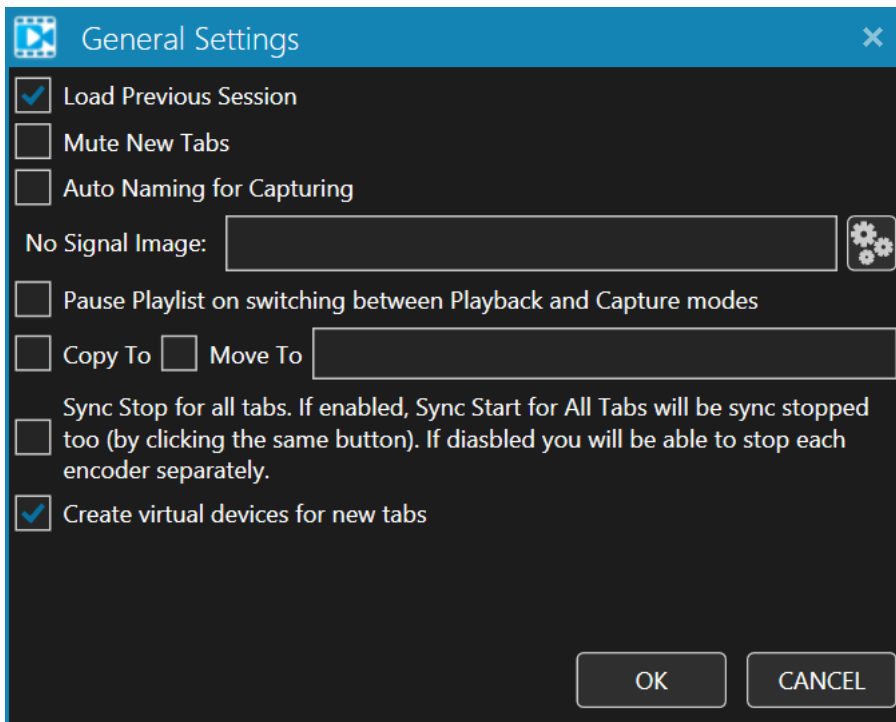
Multiview – click on this button to switch to Multiview mode. If you use several tabs it will look like:



You are able to resize each part and move it on screen. If you need to go back to default view click **Default View** button.

By double click on any part the corresponding tab will be opened and Multiview will be closed.

Settings – Opens General Settings dialog:



Here you are able to set application settings:

Load Previous Session – Direct Take tries to open all the tabs that were opened before it was closed.

Mute New Tabs – All new tabs will be with Muted Preview by default.

Auto Naming for Capturing – If target file already exists a new one with (1), (2) etc. suffixed will be created

No Signal Image – if there is no signal for live source this picture will be displayed (instead of default “No Video Signal” message)

Pause Playlist on switching between Playback and Capture modes – when you switch from playback to capture mode the playlist will be paused

Copy To and Move To – post-captured actions. When capturing is over the captured file will be copied or moved to required place (folder) – just type the destination in the field.

Sync Stop for all tabs – When you start Sync Capturing for all tabs this options allows you to stop encoding for all tabs also in sync by clicking the same button.

Create virtual devices for new tabs – for each new tab Direct Take will create a virtual device for Direct Show usage. A virtual device for Playback mode and another device for Capture mode.

Help – Contains 2 elements: **Go to Support** that moves you to our support page and **About** that shows you general information about Direct Take.

Playlist-Only Mode.

A separated feature that allows you to work with Direct Take even if there is no devices on your machine at all. In this mode you can manage a playlist and transcode it to required format or stream it to network. All the settings are the same as for device.

P.S. If you need more detailed information about Direct Take and its functionality, please click **Help -> Go to Support** or go to <http://www.medialooks.com/support/>.