

# YOUR SIMPLE BATHROOM MEASURING GUIDE



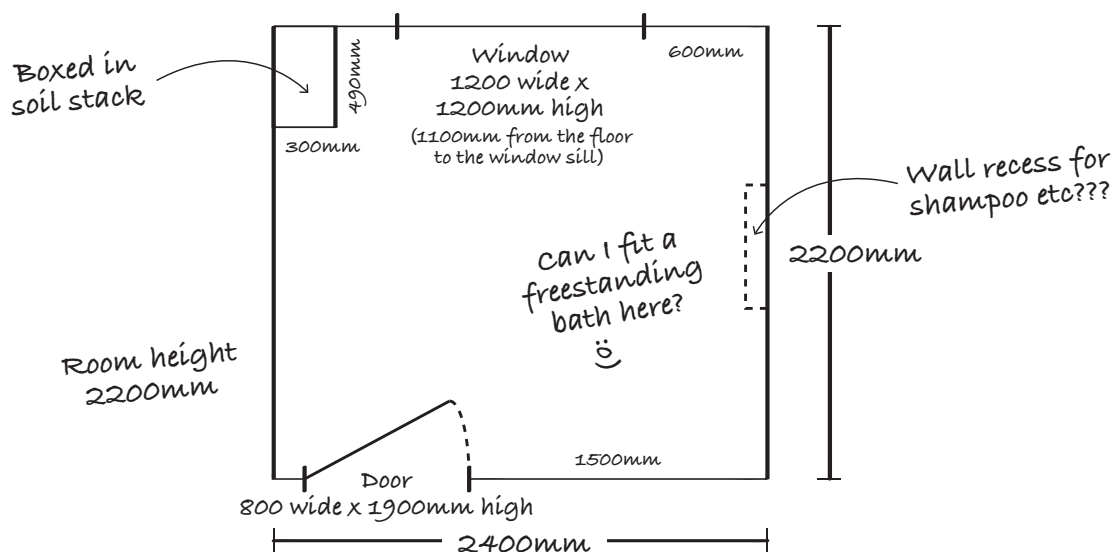
**Measuring your bathroom is easy! All you'll need is a pencil, a tape measure and to follow these simple instructions:**

**Step 1:** Pick up your tape measure and pencil.

**Step 2:** Carefully measure and record the following measurements in millimeters on a piece of paper

- Room length and width - make sure you measure from wall to wall
- Room height - measure from floor to ceiling. If you have a sloping ceiling record the highest and lowest points
- Position of the toilet (note down the direction of the soil-pipe - does it exit in to the floor, straight out the wall behind the pan or to the side?)
- Windows and door length and width - be sure to measure from the outside edges of the door frame. Make a note of the distance from the nearest wall to the window and nearest wall to the door. Finally, with any windows, measure the distance between window sill and the floor and record this on your plan
- Any major obstructions? Tell us about any boxed-in pipes, airing cupboards or any other fixed items that we will need to take into account in the bathroom design

**Step 3:** Draw it out! Use the gridded paper provided (or your own notepad) to sketch out the floor plan. **See example below:**



**Step 4:** Great job! Now please take a photo of the floor plan you've just drawn and email it to your Showroom Manager. Include some photos of the bathroom if you can.

**We're looking forward to designing your dream bathroom for you.**

