

XENIUM

Console Disassembly Guide

Rev 1.1

SISENEN



The installation of your Xenium will void your console's warranty and may cause damage to your console if not installed correctly. Please ensure that power is not applied to your XBox during this installation procedure.

XeniumMods@gmail.com

NEMESIS

Table of Contents

Part 1 - Introduction

Part 2 - Recommended Tools

Part 3 - Top Cover Removal

Part 4 - Hard Drive Removal

Part 5 - Disc Drive Removal

Part 6 - Power Supply Removal

Part 7 - Fan and Port Removal

Part 8 - Faceplate Removal

Part 9 - Jewel Removal

Part 10 - Cosmetic Overview

Part 11 - Mounting Brackets Overview

Part 12 - Hardware Overview

Part 13 - Miscellaneous Overview

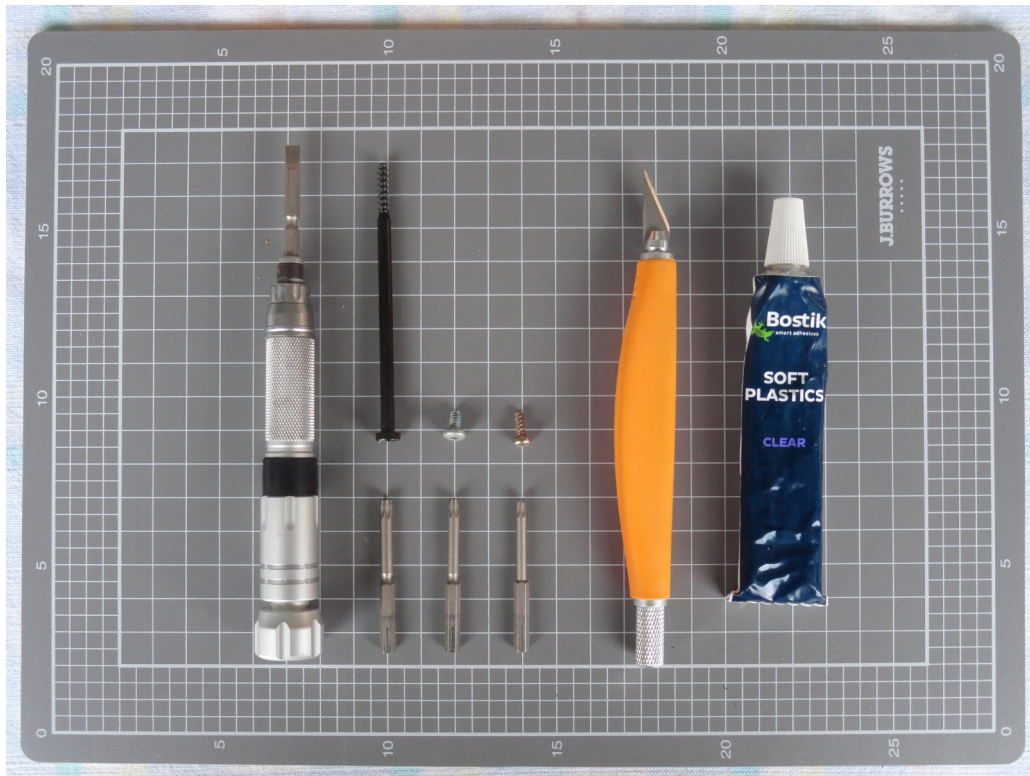
Introduction



The Original Xbox was released on November 15, 2001, in North America, February 22, 2002, in Japan, and March 14, 2002, in Australia and Europe. It was Microsoft's first foray into the gaming console market. As part of the sixth-generation of gaming, the Xbox competed with Sony's PlayStation 2, Sega's Dreamcast (which stopped American sales before the Xbox went on sale), and Nintendo's GameCube. The Xbox was the first console offered by an American company after the Atari Jaguar stopped sales in 1996. The name Xbox was derived from a contraction of DirectX Box, a reference to Microsoft's graphics API, DirectX.

The integrated Xbox Live service launched in November 2002 allowed players to play games online with or without a broadband connection. It first competed with Dreamcast's online service but later primarily competed with PlayStation 2's online service. Although these two are free while Xbox Live required a subscription, as well as broadband-only connection which was not completely adopted yet, Xbox Live was a success due to better servers, features such as a buddy list, and milestone titles like Halo 2 released in November 2004, which is the best-selling Xbox video game and was by far the most popular online game for the system.

Recommended Tools



The main tool you will need to disassembly the Original Xbox is a Torx screwdriver set, in addition with a single flat-head screwdriver.

My set in particular has interchangeable bits as shown in the image, above each Torx bit is there corresponding screws that they remove.

From left to right.

Torx 20: 6x Case Screws

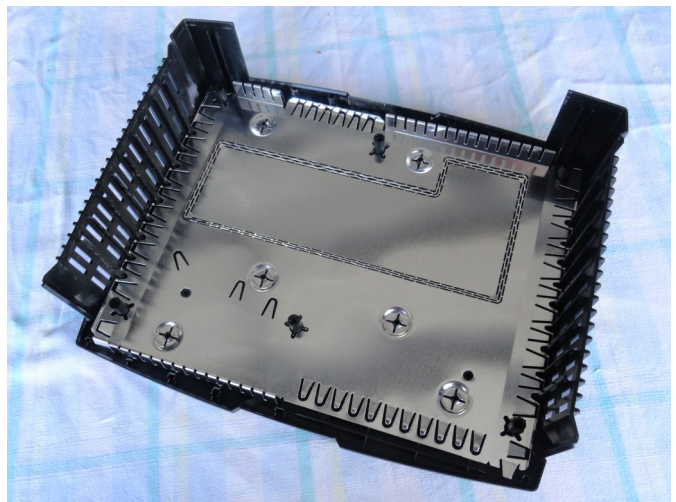
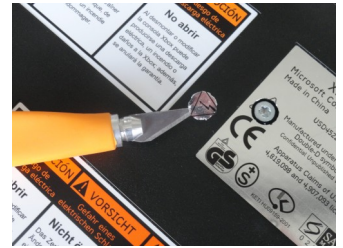
Torx 15: 4x Hard Drive Screws

Torx 10: 18x Screws for everything else

Optionally a hobby knife and a couple of butter knives will come in handy as I will explain during the disassembly process. I use soft plastic glue for reattaching the rubber feet to the console during assembly, it's not as invasive compared to other glues. After the glue dries it remains soft and flexible, this is particularly useful if you need to disassembly your console again as the rubber feet come off without too much difficulty and the remaining soft glue can be peeled off.

Note: That it is not necessary to completely disassemble your console, it all comes down to what your wanting to do with it...

Top Cover Removal



Flip over your console on something soft so you don't scratch the top cover, use your finger to locate the cavity underneath the stickers and push down so it's observable. I recommend using the hobby knife to cut the area covering the two case screw to reduce damage to the stickers as shown above. The remaining case screws can be found underneath each of the four rubber feet, even if you only peel back the rubber feet just enough to remove the case screw's they still tend to fall off and there's a good chance you might loose one or two over time. Once all six case screws have been removed, flip it back over and grab the console by each side just under the venting and pull up. Depending on your console you might need to do this a couple of times with a bit more force until she finally pops off.

Hard Drive Removal



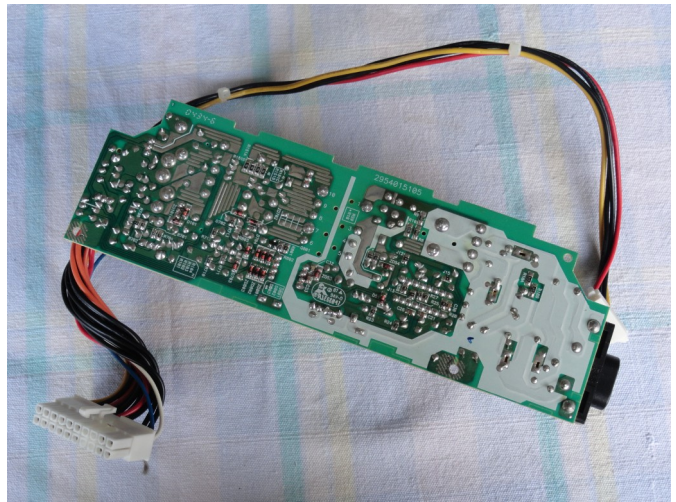
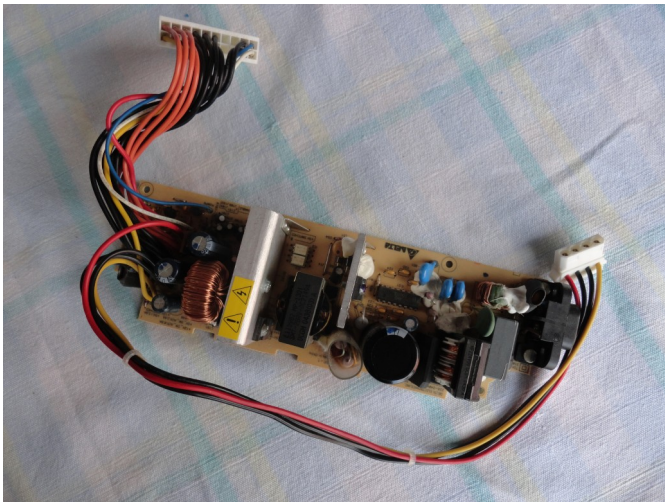
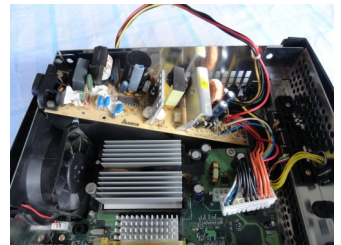
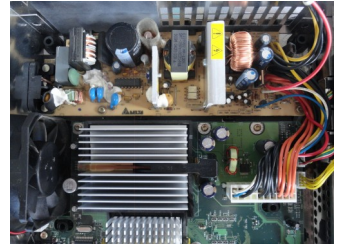
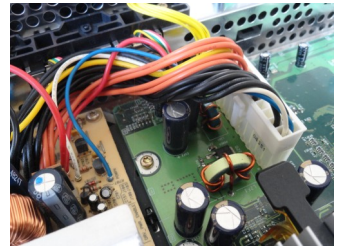
To remove the Hard Drive you will find the first Torx 10 screw underneath the IDE cable, next remove both the cable's attached to the Hard Drive. Untangle the power connector wire's from the Hard Drive mounting bracket, you can cut the cable ties to make this easier and lift up the whole thing. The Hard drive is held in the mounting bracket by four Torx 15 screws.

Disc Drive Removal



There are two Torx 10 screws on either side of the Disc Drive (DVD-rom) towards the front of the console just behind the faceplate. Lift the Disc Drive and mounting bracket then unplug the two cable's from the motherboard. From here you can remove the cables from the Disc Drive and pop it out from the mounting bracket which is only held in by a couple of clips towards the back of the Disc Drive.

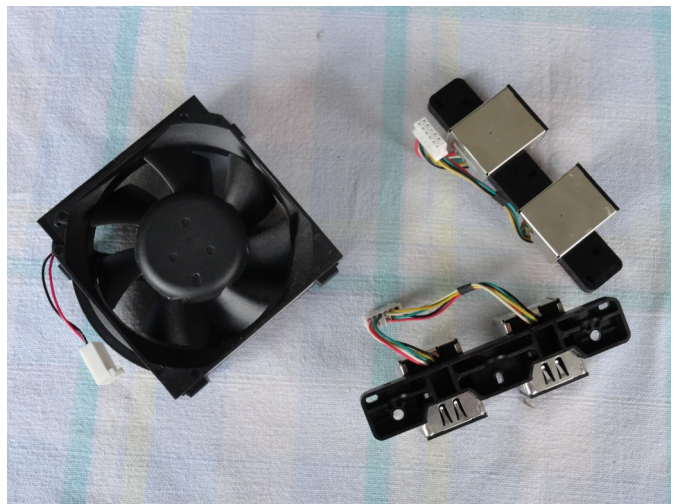
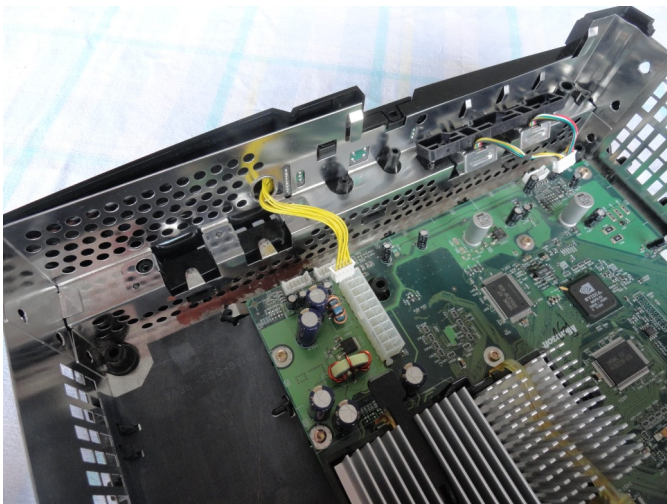
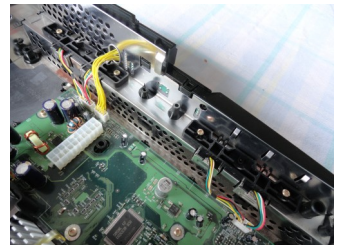
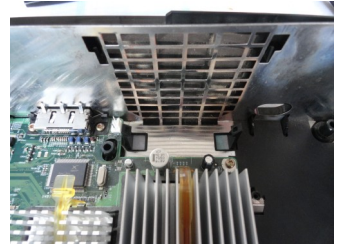
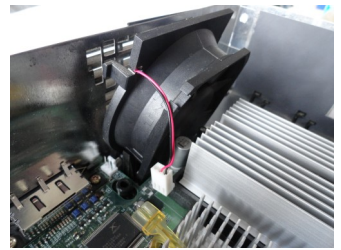
Power Supply Removal



Unplugging the dual row PSU connector is fairly straight forward but single row PSU connector found on v1.0 and v1.1 consoles can be a bit more difficult, just pay attention. There will be two Torx 10 screws along the edge of the Power Supply Unit closest to the Motherboard. Once both screws have been removed slide the PSU towards the front of the console and lift it from the back while being careful not to break the plastic tabs along the right hand side of the case.

I highly recommend reflowing the solder on the external power cord connector, especially if you have a "Foxlink" Power Supply mostly found on v1.0 and v1.1 consoles. The solder has a bad tendency to crack which may prevent your console working properly and could be a fire hazard!

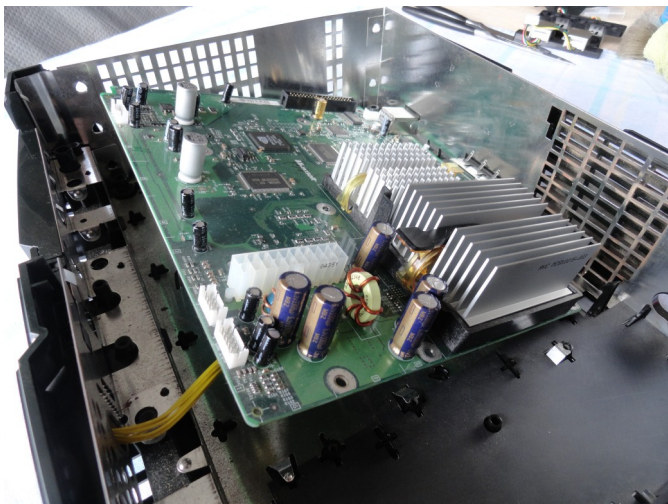
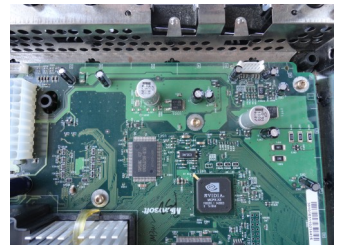
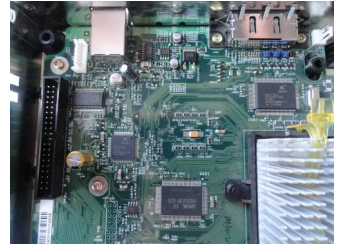
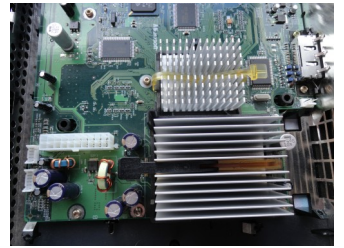
Fan and Port Removal



Pay attention when removing the Fan as the plastic clips that hold it in place can break very easily if your not careful. I use a couple of butter knives by getting them just behind the plastic clips and levering both knives towards each other. If your not sure just keep checking what your doing but if your lucky it will just pop up a little without breaking the plastic clips, from there carefully pull out the Fan the rest of the way.

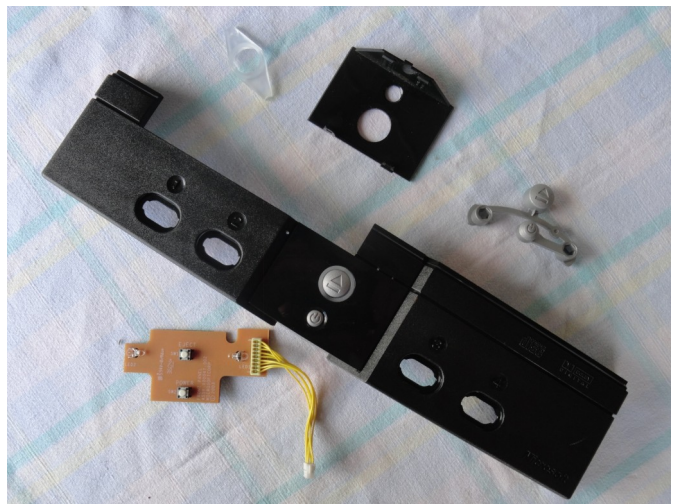
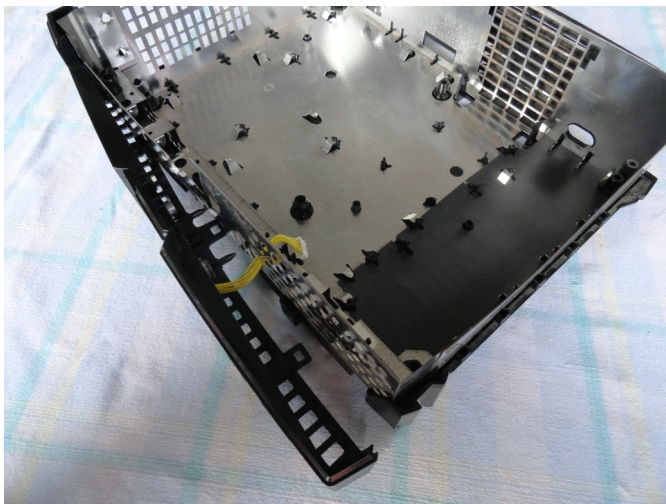
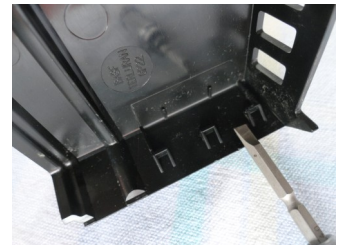
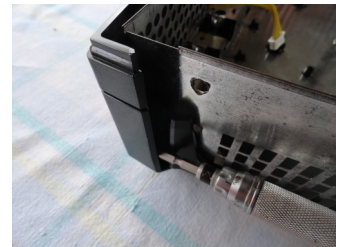
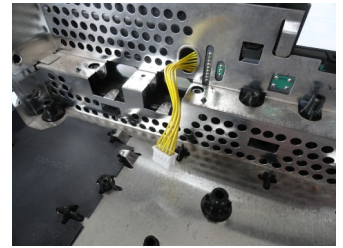
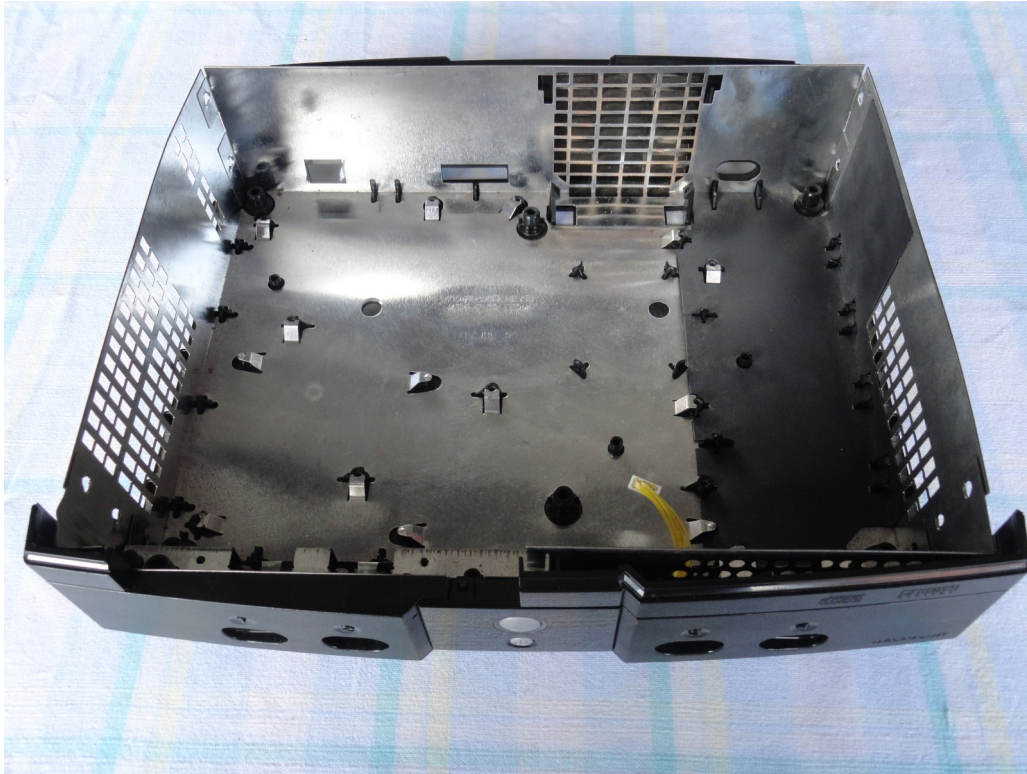
Removing the Controller Ports is very straight forward, start by unplugging the connectors and remove the two Torx 10 screws for each Controller Port. Then lift them up from the motherboard side, there are two or three plastic locator tabs underneath the ports which can snap off if your too heavy handed.

Motherboard Removal



With all the other components removed all that remains is the Motherboard. Depending on your console version there will be either ten or eleven Torx 10 screws on the Motherboard that need to be removed, lift the Motherboard from the front to about a 45 degree angle and gently pull it out. Sometimes the shielding around the Ethernet and Video/Audio connector can be rather tight, just keep wiggling the Motherboard until it finally breaks free.

Faceplate Removal



The most difficult part to remove in my opinion is the front Faceplate as there are many plastics tabs and clips that can easily be broken if you are not very careful. There are three plastics tabs on the inside of the console poking through the shielding one is just behind where the power button is and the other two are underneath each of the sets of Controller Ports, lift these tabs while pulling on the front Faceplate. Next you want to get a flat-head screwdriver and squeeze it between the bottom two clips on one side of the Faceplate and gently lever the screwdriver until the clips make it past the obstruction while at the same time keeping an eye on the internal plastic tabs. If you made it this far the remaining components on the Faceplate should be a piece of cake to remove.

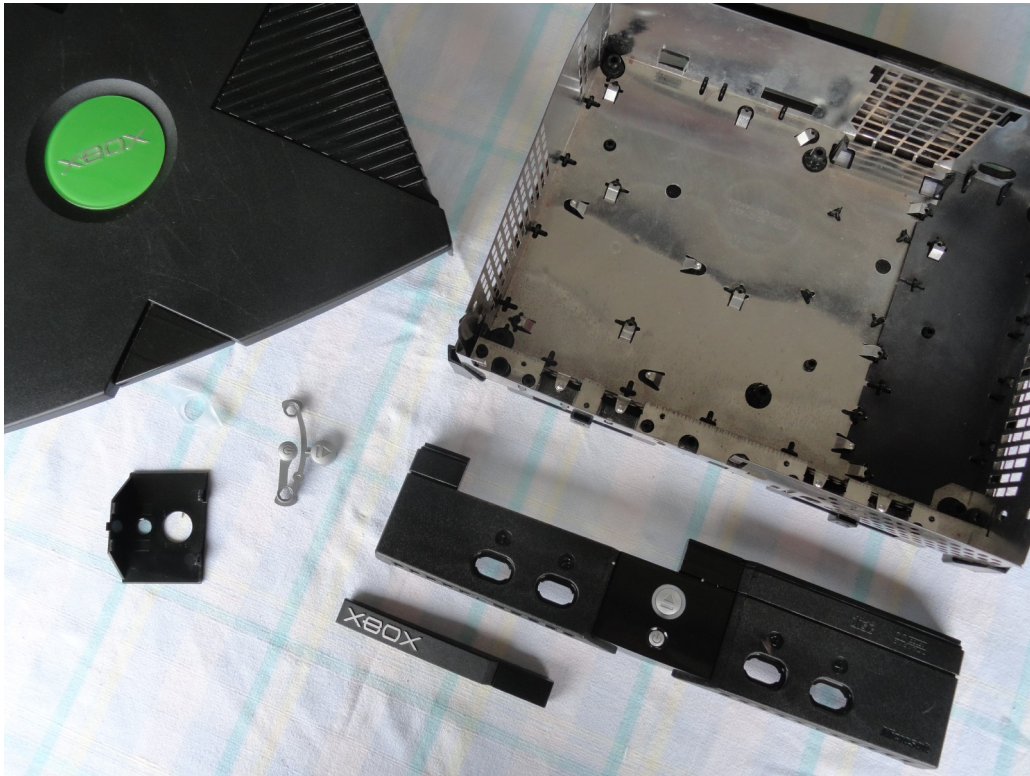
Jewel Removal



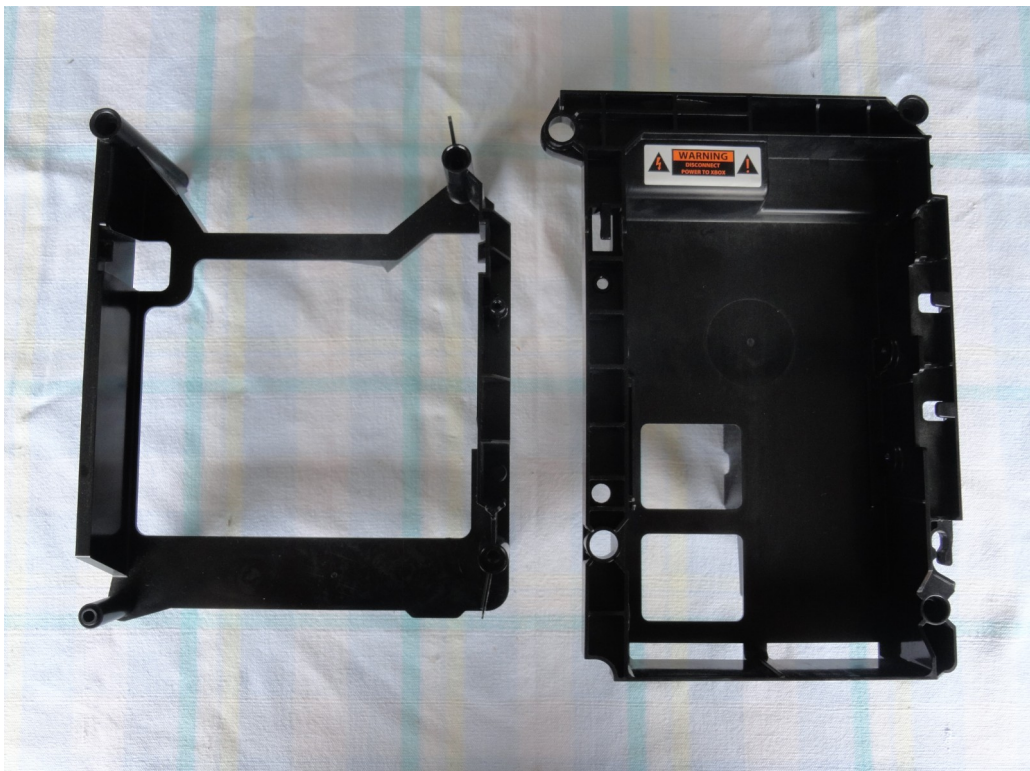
That's right, throw it in the freezer!

It seems that the adhesive goes hard when the temperature is lowered. While seated put your knee on the underside of the Xbox Jewel and apply pressure, if your lucky it'll pop right off. Otherwise get your good old swiss army butter knife handy and when the opportunity arises get the knife underneath the jewel and lever it the rest of the way out...

Cosmetic Overview



Mounting Brackets Overview



Hardware Overview



Miscellaneous Overview



Disclaimer

By purchasing an Xenium you agree that the usage of this product is strictly your responsibility. XeniumMods is not responsible for any damage or loss of data caused during the installation or use of the Xenium.

The Xenium is designed for use as a development tool or as a device to perform certain repairs and is shipped with blank bios banks so that the end user is able to install their own bios. XeniumMods is aware that various hacked bios versions are available that may contain copyrighted code and can be used for piracy. The primary purpose of this device is it encourage users to exploit the full capabilities of their Original Xbox Console.

XeniumMods@gmail.com

NEMESIS