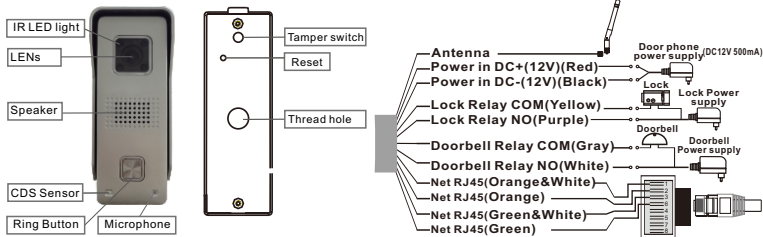


Quick Guide

V150803-2

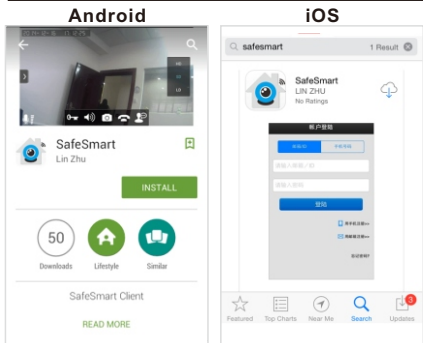
1. Introduction



2. Install the App

Download the App 'SafeSmart' from 'Google Play Store' or 'App Store', and install on mobile phone.

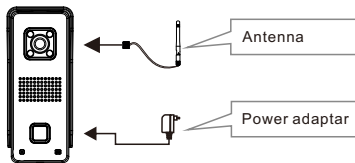
Special Notice: When open the app, you will receive a tip. Please click 'OK' to allow the notifications, otherwise, you cannot receive any notification.



3. Connect the Device

Step 1: Insert TF memory card and fix antenna, connect power supply. It takes 30 seconds to start device.

Special Notice: Do not connect the network cable, otherwise, the device cannot set the Wi-Fi by scanning QR code.



Step 2: Connect your mobile phone to your router to register a user ID.

Register by E-mail:



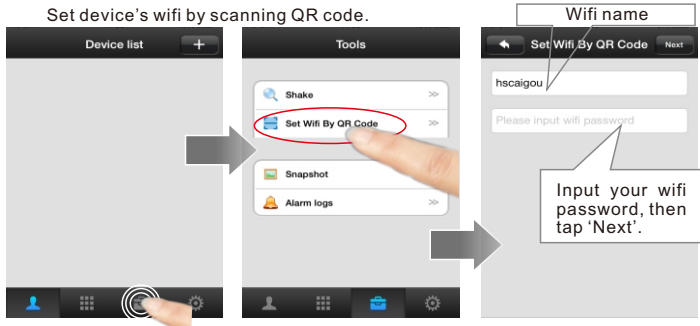
Special Notice: If 2 mobile phones use the same account ID to login at the same time, only 1 mobile phone can receive the push notification alarm ring. So if use 2 mobile phones to connect the device, user should register 2 different account IDs for the 2 mobile phones.

Step 3: Connect your mobile phone to your router.

Special Notice: Device don't support 5Ghz WIFI, user should use 2.4GHz WIFI to connect.

Special Notice: Device don't support WPA2-PSK (TKIP) and WPA-PSK/WPA2-PSK (TKIP) encrypt mode, user should change to other encrypt modes like WPA-PSK(AES), WPA2-PSK(AES), WPA-PSK(TKIP), WPA-PSK/WPA2-PSK(AES) or WEP.

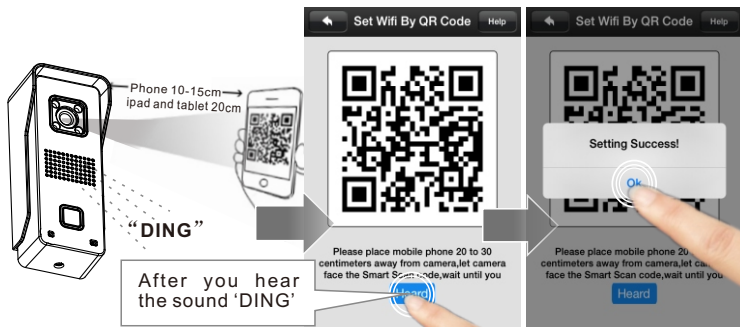
Set device's wifi by scanning QR code.



Device will have 'Di.Di.Di.Di....' sound noticing user to scan Wifi QR code.

Special Notice: If device have no 'Di.Di.Di.Di....' sound means the device has scanned before. User should press the reset button for 5 seconds until hear 'KING' and scan after hearing the 'Di.Di.Di.Di....' notice sound.

Aim the device at your smart phone's QR code in 10-15cm distance (iPad and tablet are 20cm). Once hear the sound 'DING', click 'Heard', it shows 'Setting Success', device is connected to the Wi-Fi.



Special Notice: Device is designed not able to scan QR code for 2 times. If want to change Wifi in another place, user should press the reset button for 5 seconds until hear 'KING' and scan after hearing the 'Di.Di.Di.Di....' notice sound.

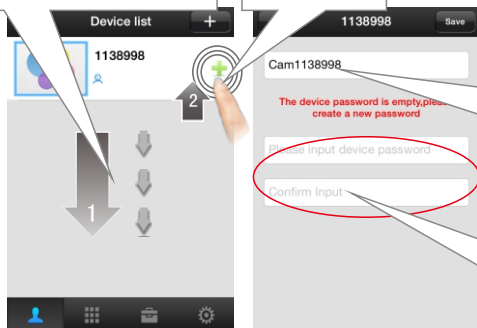
Step 4: Add device. In 'Device List', slide down to find device.

1. Slide down to refresh and find device.

2. Click to add device

3. Input your device name

4. Input your device password, then tap 'Save'.

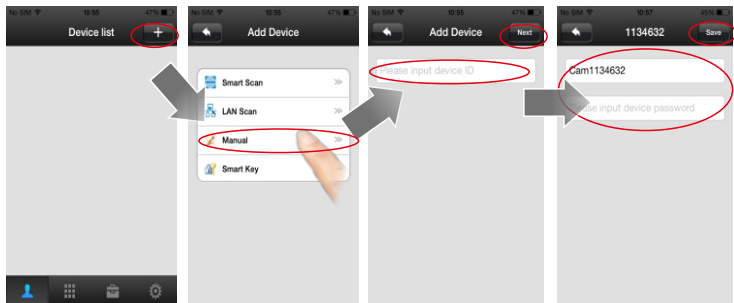




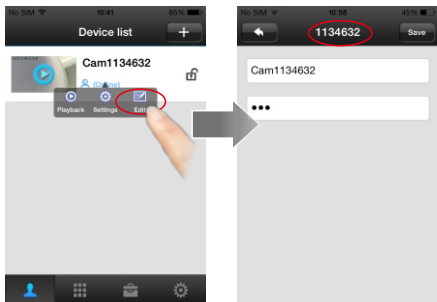
NOTICE: If fail to scan the QR code, you could reset the device and retry. Or connect wifi by using network cable. More details please refer to PART9 & PART10.

4. Add device to another mobile phones.

Scan QR code to set Wifi can be scanned only once. If user need to add device to other mobile phones, user don't need to scan Wifi QR code again. User should press the **+** button in the 'device list' to enter 'Add Devices' interface, press 'Manual' button and input device ID and password to add device.



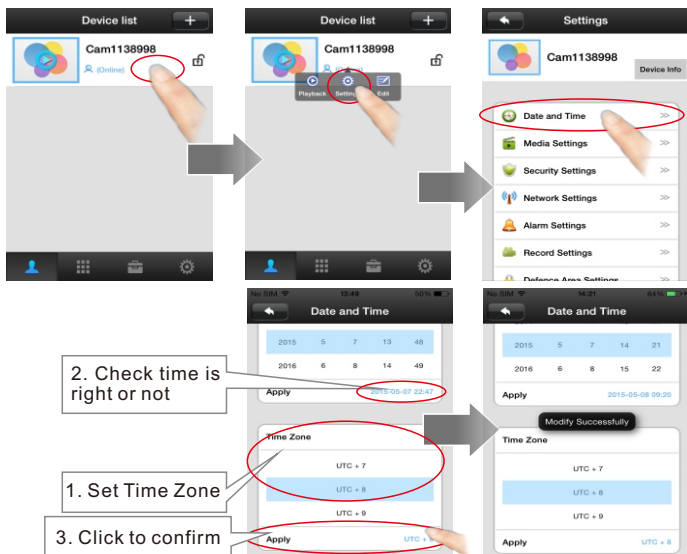
Note: Device ID is in 'Device List->Device->Edit' as below.



5. Date and Time

In "Device List-Device-Setting-Date and Time", choose your Time Zone, and check if the new time is right or not. If time is right, press apply to get network time automatically.

Remark: Time zone example: China UTC+8
 Germany/France/Spain/Poland/Italy/Netherlands/Norway/Sweden UTC+1
 UK/Portugal/Ireland UTC+0
 Mexico UTC-6
 Venezuela/Chile/Manaus UTC-4
 Turkey/Romania/Finland UTC+2
 Colombia/Ecuador/Peru UTC-5
 Argentina/Uruguay UTC-3




6. Push Notification Ring

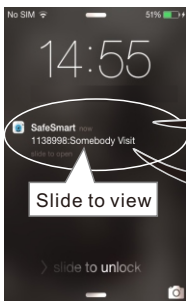
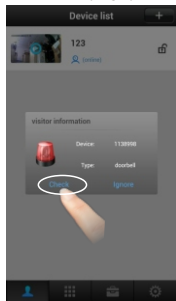
In order to receive the push notification from the device, you should turn on 'Alarm Push'.

Step 1:

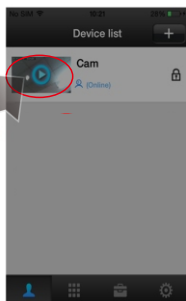


Step 2: When people press the call button of the device or trigger the alarm, there will be a notification received on the mobile phone screen. For Android, press 'check' to view. For iPhone, slide and press 'view' or  to view.

Android



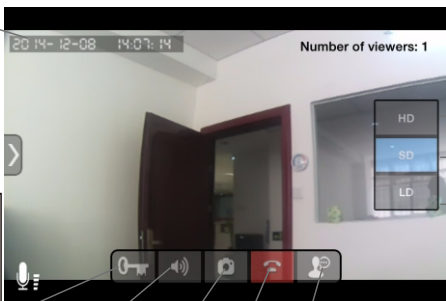
iOS



NOTICE: User must keep the app running at phone's background, user can't force stop the app in phone's application manager, otherwise phone can't receive any push notification.

7. View Interface

Date and Time



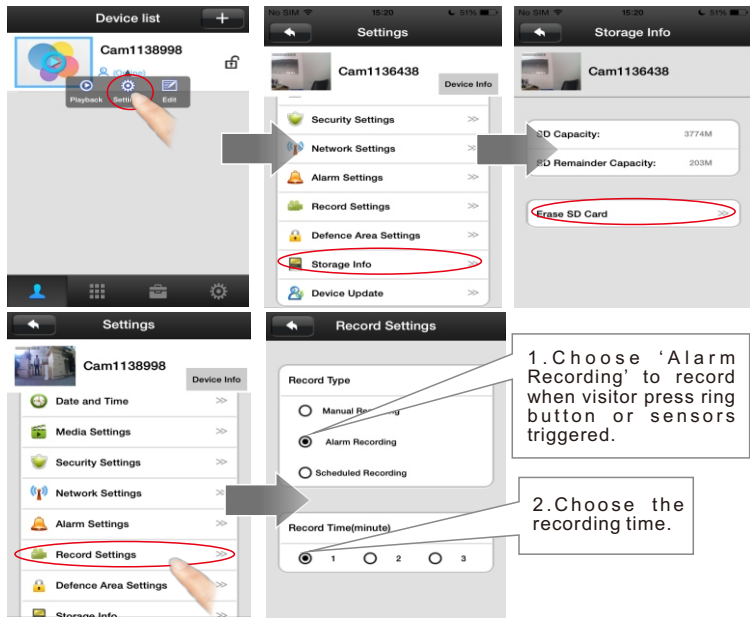
Press and hold for 3 seconds to unlock. Then you had to wait for 6 seconds to unlock again.

View HD image at 1280*720
View clear image at 640*360
View smooth image at 320*180

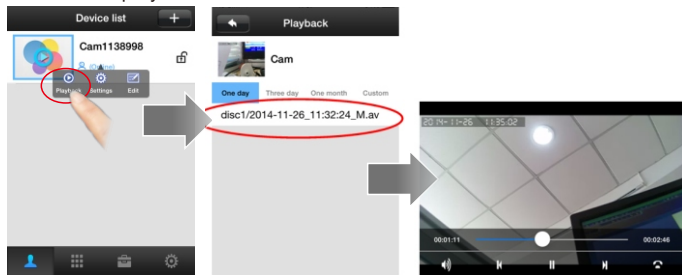
Audio | Snapshot | Hangup | Hear/Talk Button

8. Video Record and Playback

Step 1: Start recording. Insert the TF card (DO NOT insert or remove TF card when device is power on). Enter 'Device list→ Device→ Setting→ Storage Info' Click 'Erase SD Card' to format SD card. In 'Device list→ Device→ Setting→ Record settings' choose Record type and Record Time.

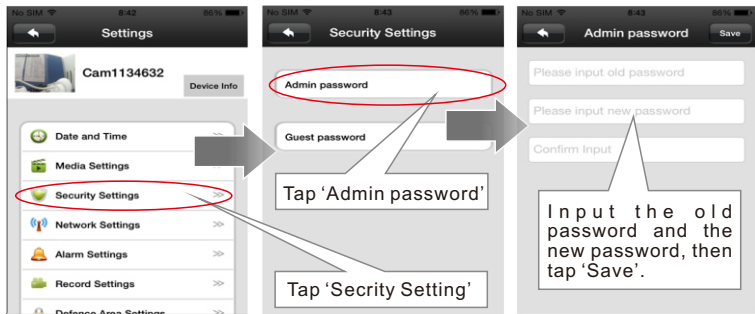


Step 2: Playback. In 'Device list→Device→Playback', chose the video file to view playback.



9. Modify device's password

'Device List→ Setting→ Security Settings', choose 'Admin password' to modify device's password.



10. Reset the device



Press and hold the reset button for 5 seconds and you will hear a voice of 'KING', wait 30 seconds to restart the device.

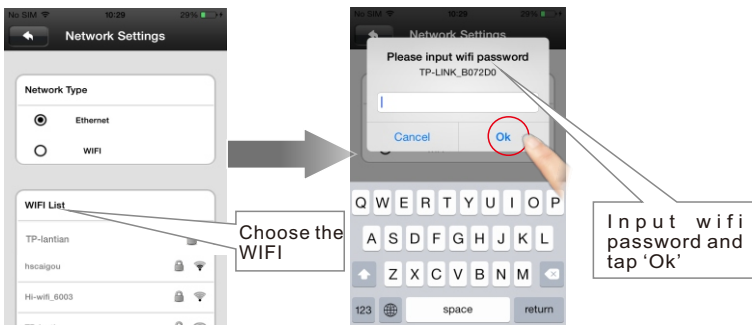
11. Connect wifi by using network cable (Only used for the QR code scanning is not available)

Step 1: Plug in a network cable to the device and the LAN plug of the router.

Step 2: Add device. In 'device list' slide down to find device.



Step 3: Set wifi. In 'Device list→Device→Setting→Network settings' Choose 'WIFI' to set device WIFI.

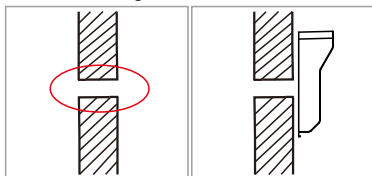


12. Mount on the Wall

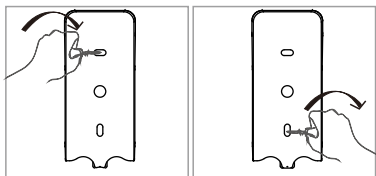
Notice: The wifi antenna should be installed inside the house to have better signal.

Remark: Please confirm the correct Wi-Fi setting and insure the position with good Wi-Fi signal before mounting on the wall. Otherwise, it needs to relocate the router or the antenna direction to receive the good Wi-Fi signal. If the Wi-Fi signal is still not strong enough, please add the Wi-Fi repeater or use the network cable. Make a mounting hole similar size as the back housing of the device. Drill a hole for the wires to go through the wall.

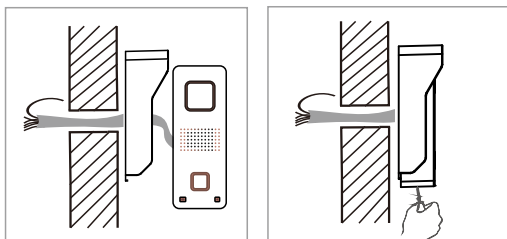
Step 1: Drill a hole for the wires to go through the wall



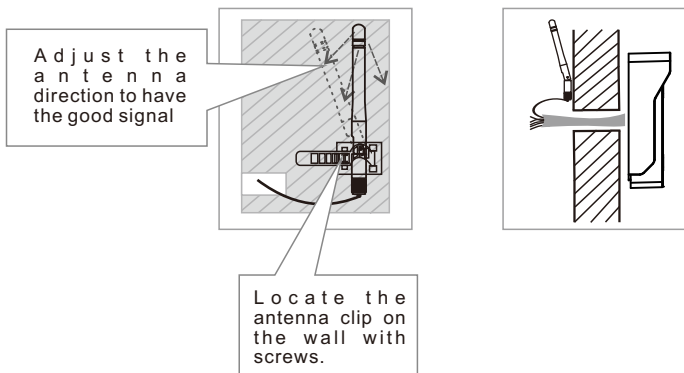
Step 2: Fix the back housing on the wall with two screws



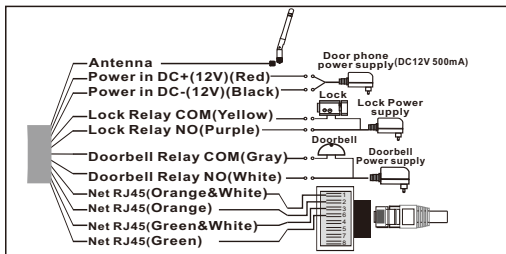
Step 3: Lead the wires through the hole in the wall, and put the device into the back housing. Tighten the screw in the bottom.



Step 4: Locate the antenna clip on the wall with screws.



Step 5: Connect the wires of power supply, unlock signal, antenna, etc. in other side of the wall.



13. Tamper Alarm

When the thief open the device, it will have siren alarm, and your phone will receive alarm too. (The tamper alarm will be last for 1 min.)



FAQ

Q1. Why I can't scan QR code?

- A:**
1. Device should have 'Di,Di,Di,Di....' Sound to notice user scanning Wifi QR code. If device have no 'Di,Di,Di,Di....' sound means the device is not normal. User should press the reset button for 5 seconds until hear 'KING' and scan after hearing the 'Di,Di,Di,Di....' notice sound.
 2. Device is designed not able to scan QR code for 2 times. If want to change Wifi in another place, user should press the reset button for 5 seconds until hear 'KING' and scan after hearing the 'Di,Di,Di,Di....' notice sound.
 3. If device is connected with RJ45 net cable, it can't scan QR code, user should remove net cable and scan QR code.
 4. Maybe you are using 5Ghz WIFI, device don't support 5Ghz WIFI, user should use 2.4Ghz WIFI to connect.
 5. Maybe your router is using WPA2-PSK (TKIP) or WPA-PSK/WPA2-PSK(TKIP)encrypt mode. Device don't support WPA2-PSK (TKIP) and WPA-PSK/WPA2-PSK(TKIP)encrypt mode, user should change to other encrypt modes like WPA-PSK(AES), WPA2-PSK(AES), WPA-PSK(TKIP), WPA-PSK/WPA2-PSK(AES) or WEP.


Q2. Why I can't receive push notification ring on my phone?

- A:**
1. Make sure app's 'Device->Settings->Alarm Settings->Receive alarm message' is enable.
 2. Make sure the app is running at phone's background, and you haven't force stopped the app in phone's application manager.
 3. Make sure you had chosen 'OK' to allow app to send you notification when you first install the app. Or check your phone's notification center to enable receiving app's notification.
 4. If 2 mobile phones use the same account ID to login at the same time, only 1 mobile phone can receive the push notification alarm ring. So if use 2 mobile phones to connect the device, user should register 2 different account IDs for the 2 mobile phones.

Q3. Why some times after I received push notification ring on mobile phone, it takes too long time to connect to video or fail to connect to video?

- A:** It is possibly because your mobile phone is using 3G network and at that place the 3G network

signal is not good enough and percentage is only 25% or 50%. If 3G network percent is below 75%, it is not good enough to transfer video file, user should change to other place for better mobile 3G signal or change to use WIFI signal. Moreover, 1 device can send push notification ring to max. 5 mobile phones at the same time, user should set more mobile phones to receive the push notification ring to avoid this 3G signal not good at some places problem.

- Q4.** Why can't hear the voice clearly, picture delay, voice delay, halt or no sound.
A: 1, Possibly because network not good and stable. Choose the 'LD' mode to try or change a better bandwidth network.
 A: 2, Possible there are too many other devices like computers on the same router, pls close these devices or change to a bigger bandwidth network.
- Q5.** Why Video and voice delay when I mount the doorphone on the villa fencing or far outside?
A: Possibly because the distance and thickness of blocks exceeds the transmitting ability of antenna. User can choose to use a 16DB fixed direction antenna to improve the wireless signal.
- Q6.** Why I hear a shrill sound, too small sound or can't hear sound from the doorphone on my Android phone?
A: 1, Different phone model have different volume. User can adjust the volume of the phone to have better sound.
 2, iPhones, iPad and most Android phone's sound is good enough. Only few special Android phone models sound is not good, in this case user can press the 'Hear/Talk Button'  to hear only and press again to talk.
- Q7.** Why the device have noise and echo.
A: Possibly because the mobile phone is too closed to the device, move the phone far away and try.
- Q8.** Why I can't open the lock?
A: 1, Possibly you haven't hold pressing the unlock button enough time, pls hold pressing it for 3 seconds.
 2, Possibly your connection to the lock is wrong, pls check the lock's required signal.
- Q9.** How can I updated my app if I face problem?
A: Pls get in the app and go to 'System Settings' and click 'Update' to update to newest version
- Q10.** How can I updated my device if I face problem?
A: Pls get in the app and go to 'Device List->Device->Settings' and click 'Device Update' to update to newest version.

Model Specification

Image Sensor	1/4" Color CMOS Sensor
Compression	H.264
Resolution	HD: 1280*720; SD: 640*360; LD: 320*180
Memory	8GB Memory inside. Optional, Max. 32G.
Lens	Fixed 2.1mm 110°/3.6mm 60°
Sensitivity	0Lux (IR ON) / 0.5Lux (Normal)
IR LED	4 × Φ4
Night vision distance	Max. 2 meters
IR-CUT	Optional
WiFi Antenna	3DB/6DB/10DB/16DB Optional
Size	L55xW40xH129mm
Power Supply	DC 12V 500mA <12W
Working temperature	-20℃ ~ 50℃
Working humidity	10% ~ 80% no condensation
IP level	IP65