



GLOBAL ENVIRONMENT FACILITY  
INVESTING IN OUR PLANET



# Overview of GEF Family

Robert **BAKIKA**  
Conventions Contact Point



Environmental Management for Livelihood Improvement Bwaise Facility (EMLI)

[www.bwaisefacility.org](http://www.bwaisefacility.org)

# The GEF CSO Network & the GEF CEO



**THANK YOU**

# Why the Engagement with CSOs

## Rationale for engagement

**Section VI** of the “Instrument for the Establishment of the Restructured GEF” - titled “Cooperation with Other Bodies”, allows for the role of NGOs and other members of civil society in “GEF project preparation and execution”

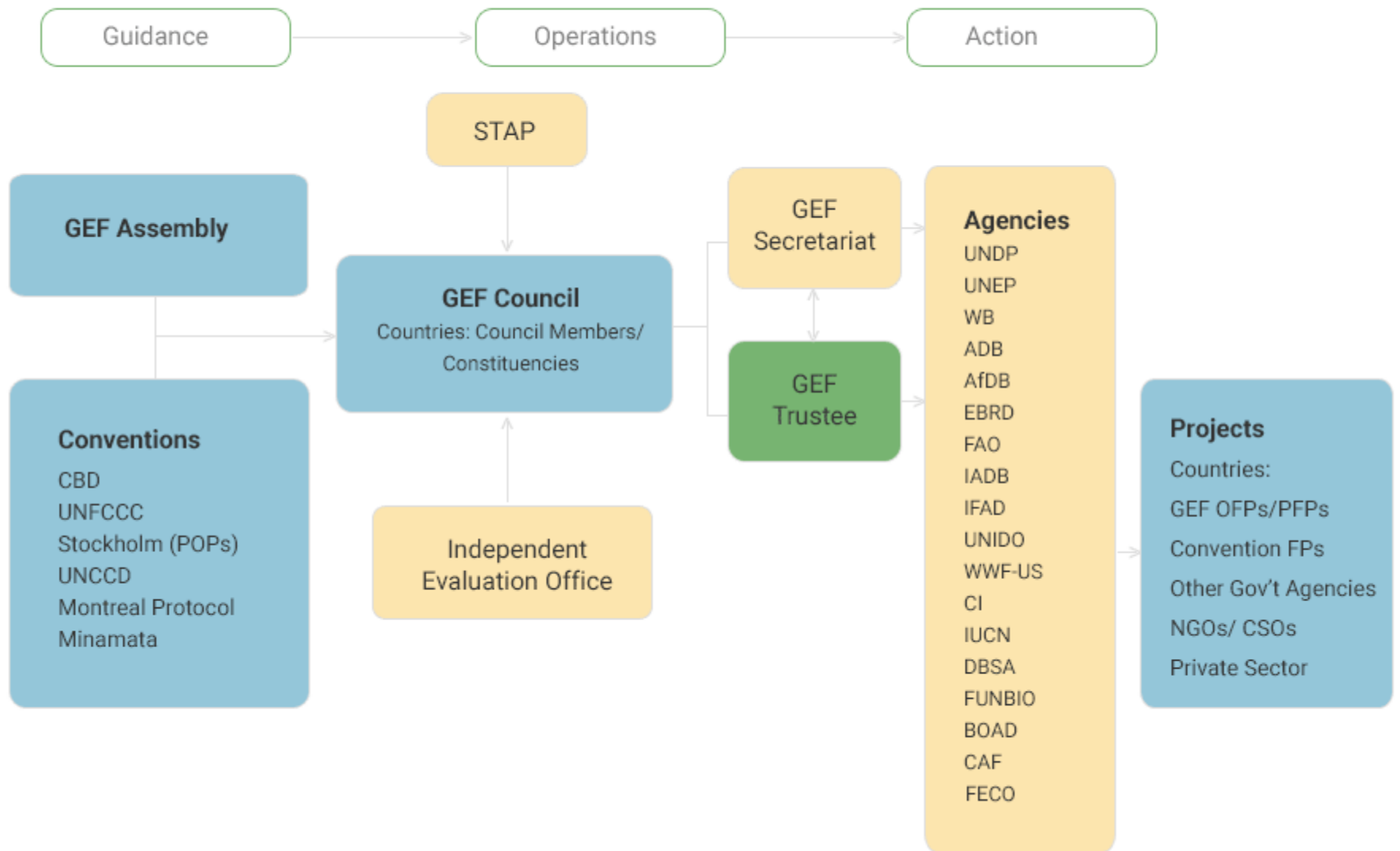
The **1996 GEF Public Involvement Policy** in GEF-Financed Projects further solidified the role of CSOs (NGOs & IPs) in the GEF activities.



**Experience demonstrates that working with civil society often can help enhance the impact and sustainability of GEF interventions.**

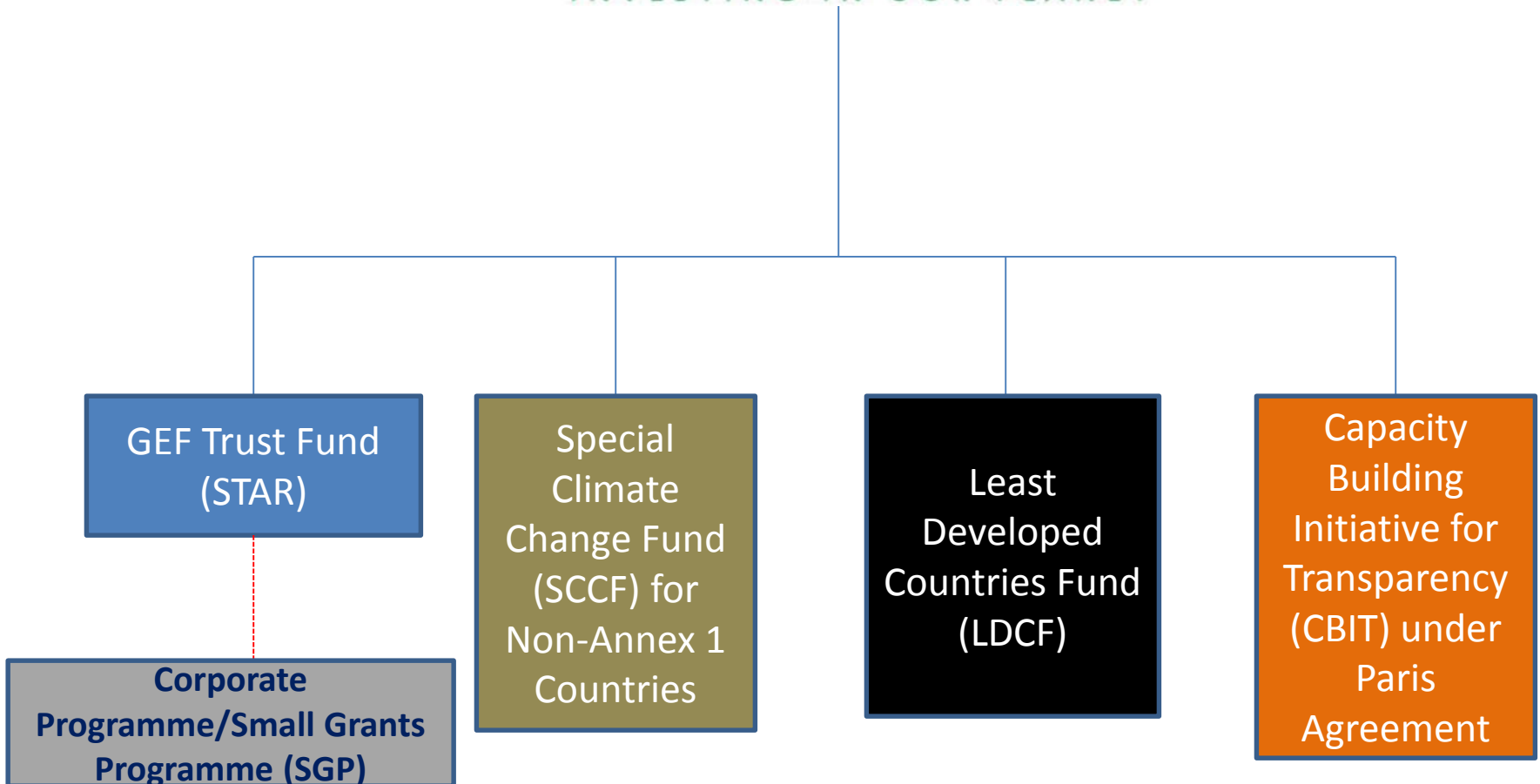
GEF envisages: a) develop knowledge that will have impact on key drivers (of environmental degradation); b) jointly create a platform for actions; c) incorporate scientific findings into project design, ensuring the highest impact possible.

# Institutional Framework





**GLOBAL ENVIRONMENT FACILITY**  
INVESTING IN OUR PLANET

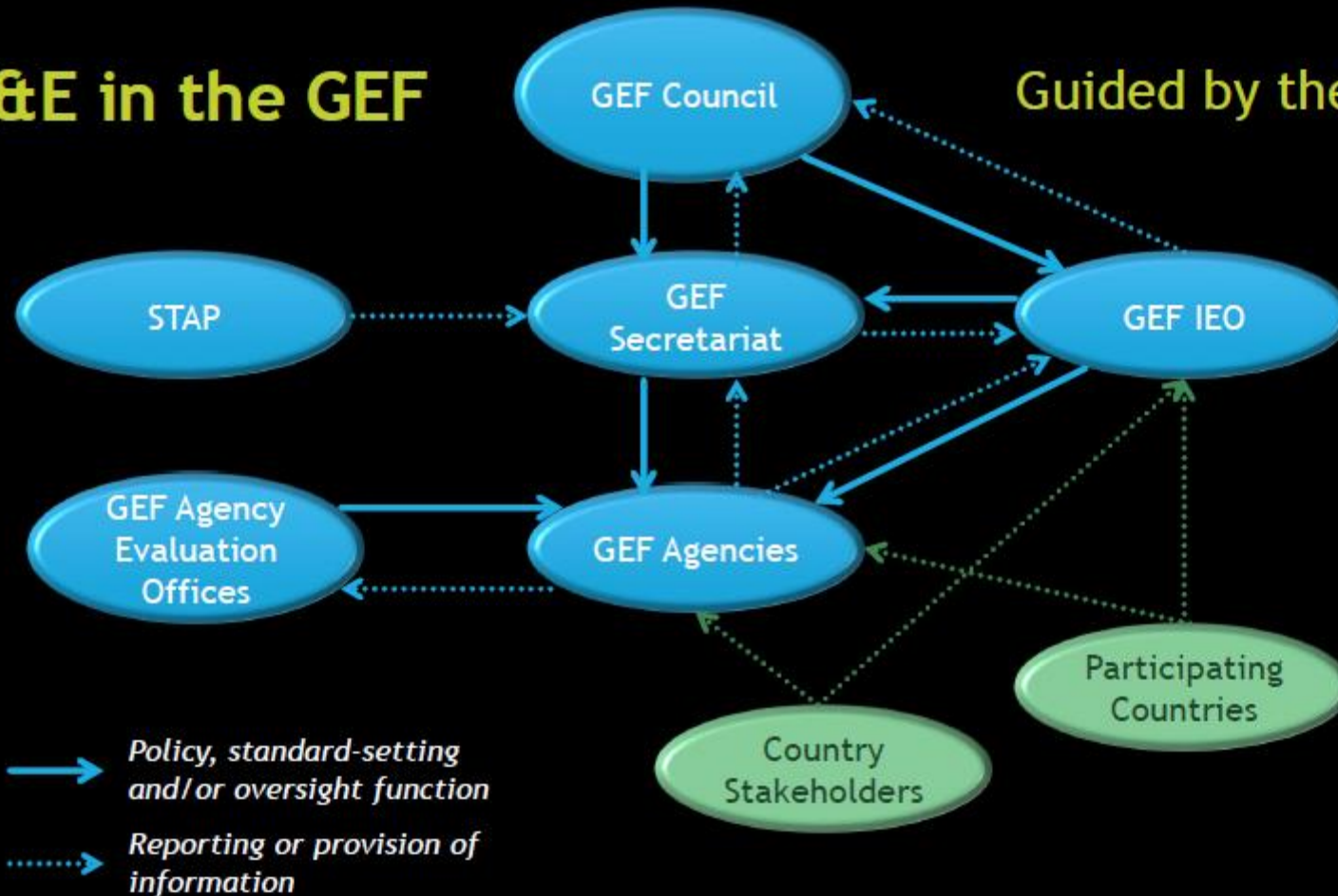




# Update on the Sixth Comprehensive Evaluation of the GEF (OPS6)

# M&E in the GEF

Guided by the M&E Policy



# GEF relevance



United Nations  
Framework Convention on  
Climate Change



Convention on  
Biological Diversity



United Nations  
Convention to Combat  
Desertification



Evolution of the focal  
areas strategies



Commitment to the  
mandate alongside  
innovation



Spread across  
countries and  
sectors



Responsiveness to  
convention  
secretariats



## Small grants program



Success in securing Global Environmental Benefits



Attention to community level benefits, poverty and livelihoods



More successful at mainstreaming gender than other GEF projects



Differing views on the extent to which SGP should address socio-economic priorities



The upgrading policy brought challenges



M&E remains too complex