

An aerial photograph of a city skyline, likely Shanghai, featuring a prominent golden skyscraper on the left. The building is illuminated with a bright light at its peak. The rest of the skyline consists of various modern high-rise buildings. The sky is overcast with grey clouds, and the water of a river or bay is visible in the foreground.

**CYTT 畅游联盟**  
Changyou Alliance

**畅游全球**  
Changyou Global



**01** Tourism Market Analysis

**02** CYTT Ecosystem

**03** Mining & Revenue Model

**04** Rewards & Burning Ratio

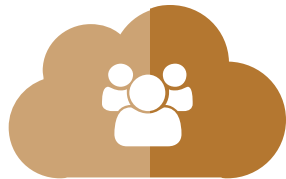
01

# Tourism Market Analysis



# Why Travel?

In 2018, there were more than 75% China citizens who have not make their passport.



By 2025, global estimate travel industry will passed USD 30 Trillions.

Total travel spent globally in 2018 is in excess of USD 13 Trillions.



02

# CYTT Ecosystem



# Mechanism

1

Travel for FREE is real.

2

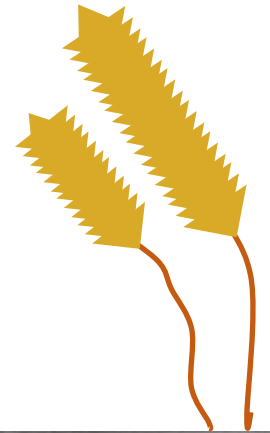
Traditional travel clubs, members pay monthly fees. What if now you can get a monthly return instead and travel?

3

Blockchain in travel can get you up to 300-500% returns within 20 months through mining process.

4

Flexible choices of passive and active participation in this process.



03

## Mining & Revenue Model



# Mining Chart

## Machine Grades & Revenue Chart

Grade	Mining Model	USDT Price	CYTC Mine	Power	Total CYTC (Month)	Total CYTC (Day)	Total CYTC (Hour)
Starter		Free	60	-	60	2	0.08
Beginner	C1	100	1428.5714	0.2	285.7143	9.5238	0.3968
	C2	300	4285.7142	0.21	900.0000	30.0000	1.2500
	C3	500	7142.8571	0.22	1571.4286	52.3810	2.1825
Intermediate	M1	1000	14285.7143	0.24	3428.5714	114.2857	4.7619
	M2	3000	42857.1429	0.25	10714.2857	357.1429	14.8810
	M3	5000	71428.5714	0.26	18571.4286	619.0476	25.7937
Advance	V1	10000	142857.1429	0.28	40000.0000	1333.3333	55.5556
	V2	30000	428571.4286	0.29	124285.7143	4142.8571	172.6190
	V3	50000	714285.7143	0.30	214285.7143	7142.8571	297.6190
Super Grade	G1	CYTT	1000000	1 Year	Weighted Dividend	Global 2%	Every 24hrs
	G2		2000000				
	G3		3000000				



# Passive & Active Income

## Beginner

Match 50% of directs mines daily revenue



## Starter

Every 5 authenticated accounts will receive 1 starter grade mining model.

## Intermediate

Match 50% of directs mines daily revenue plus 15%(M1), 18%(M2), 21%(M3) of the daily power of the small group mines.



## Advance

Match 50% of directs mines daily revenue plus 24%(V1), 27%(V2), 30%(V3) of the daily power of the small group mines.

04

# Rewards & Burning Ratio



# Types & Fees Chart

	Mining Model	Passive / Active	Personal Travel Funds (Not Transferable)	Service Fees	Wellness Funds (from both Passive & Active)	Burn Ratio
Starter	Free	Passive	50%	<p>1. The Travel Fund is limited to the purchase of travel-related products and is limited to personal use. (10% transfer fee will be charged for any transfers.)</p> <p>2. All outputs from mine must be clicked to collect within 24 hours, otherwise the system will automatically collect into lock pool, and charge 10% service fee for unlocking the outputs.</p> <p>3. 3 USDT per transfer.</p> <p>4. 5 CYTT per transfer.</p>	1%	CYTC/CYTT 1% burn for every conversion
Beginner	C1	Active	5%			
	C2					
	C3					
Intermediate	M1		10%			
	M2					
	M3					
Advance	V1		15%			
	V2					
	V3					
Super Grade	G1					
	G2					
	G3					

Note:

1. Users who have not purchased a beginner grade or higher miner do not enjoy any rewards.  
2. All miners above C1 (including C1 miners) run for 30 days, a total of 20 cycles. After the 20 cycles, the miners will be automatically destroyed. During the operation period, the miner will be charged at 5% for each cycle of the operating cost of the miner's price. At the end of each cycle of mining operation, you need to click to continue running or give up the mining machine. If you give up the mining machine, the operating cost is calculated according to the number of running cycle of the mining machine.

3. Application for Super Grades eligibility:

- G1 - team accounts reached 7,500, while holding V3 level mining machines in operation.
- G2 - team account reached 25,000, while holding V3 level mining machines in operation.
- G3 - team accounts reached 50,000, while holding V3 level mining machines in operation.

You can apply for a currency lock position for one year, and you can get a global performance weighted dividend. And at the same time enjoy the V3 level team award. (After applying for a node at the G3 level, you can support the establishment of a local tourism club. One year's rent, furniture, and decoration costs, enjoy the benefits of tourism packages, and apply for product sales in a certain field.

4 CYTC / 0.07USDT price is constant. CYTT / 0.14USDT (initial issue price)



**CYTT 畅游联盟**  
CYTT Changyou Alliance