

## Body measurements needed for the construction of front and back bodice

- ✚ Bust circumference
- ✚ Bust height
- ✚ Waist circumference
- ✚ Waist height
- ✚ Shoulder slant width
- ✚ Back width
- ✚ Chest width
- ✚ Bust span
- ✚ Blouse length
- ✚ Nape to waist line

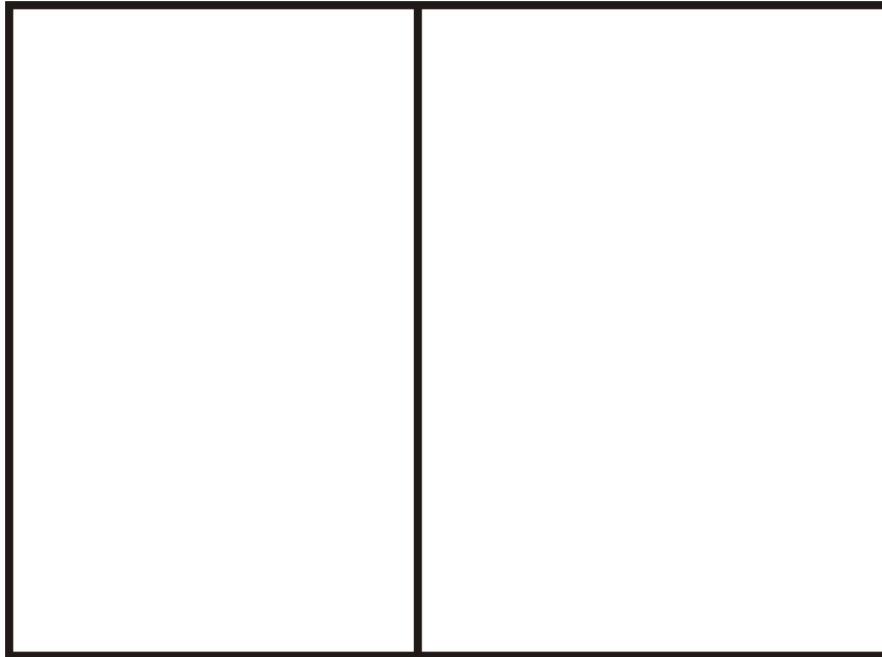
**step1** Draw a box that is 5inches wider than half of your bust circumference by the 2inches plus the blouse length e.g if your bust is 40,and blouse length is 22, then the box will be  $(40/2)+5 = 25$ inches by 24 inches

**step 2.** Divide the box in to 2 equal halves so as to know where the front and back bodice are.

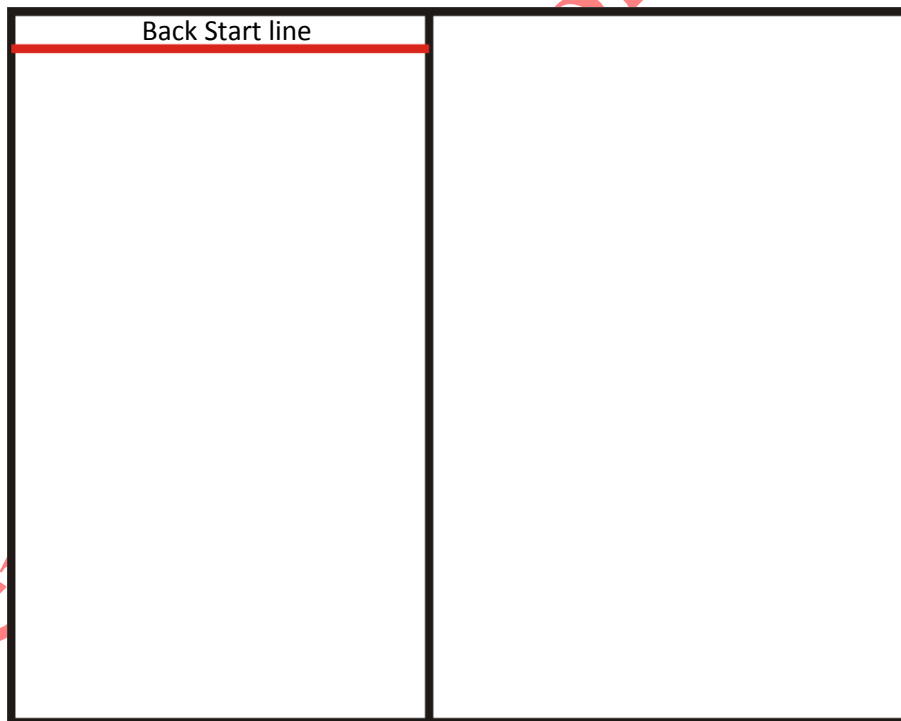
Just like in the calculation above, each segments will be 22.5 by 24 inches.

Back side

Front side



**Step 3** Measure 1.2 inches downward at the back side and label it start line



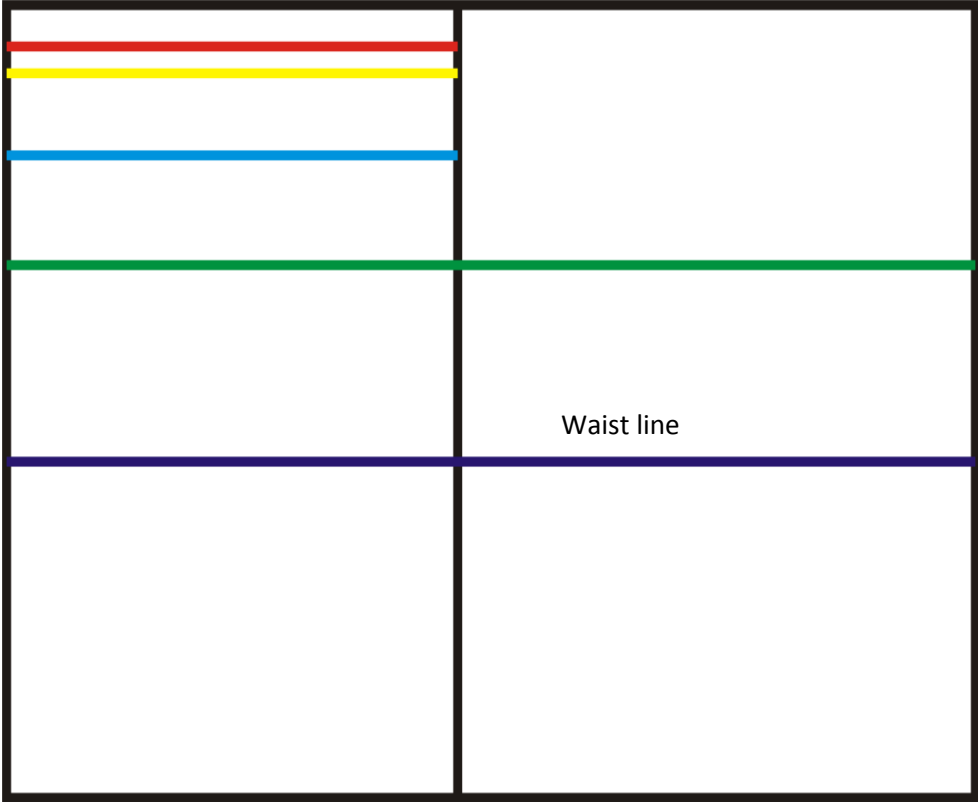
**Step 4** Measure another 1.2 inches downward at the back side and label it shoulder line



Step 5 At the front side measure and draw arm scye line which is located 1.5 inches above the bust height i.e bust height minus 1.5 inches



Step 6 mark back line which is halfway between start line and armscye line

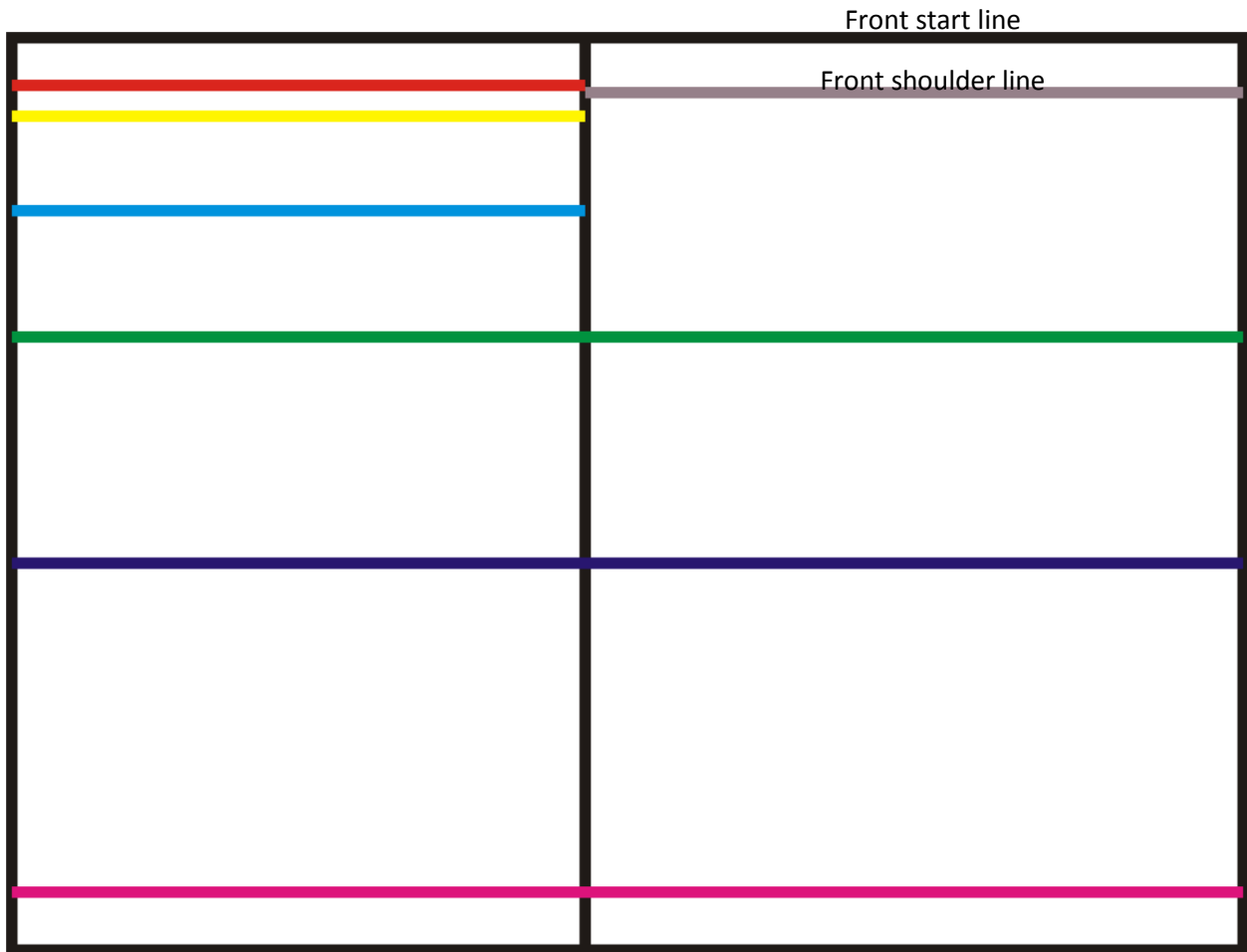


Step 7 Also, at the front side, measure and mark the waist height across the pattern

Step 8 measure and mark the full blouse length line across the pattern

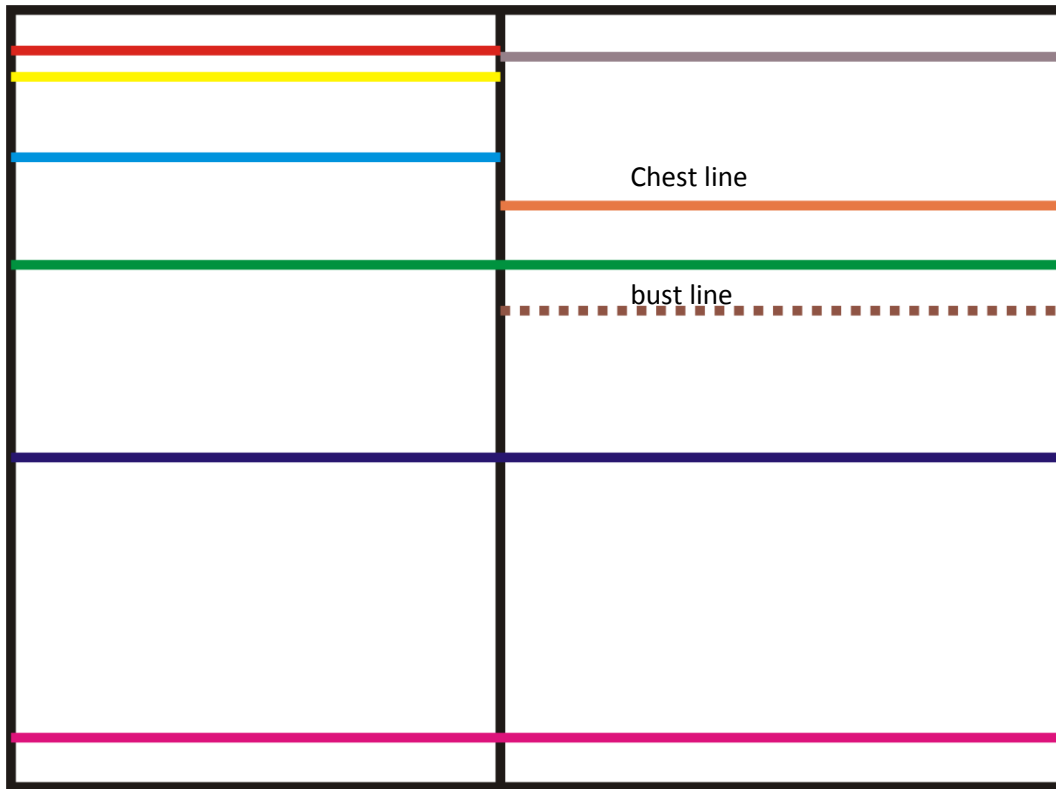


Step 9 At the front side, label the edge of the box start and mark the shoulder line 1.75 inches away from the edge.



Step 9 measure and mark bust line and chest line which is 1.5 inches above armscye..

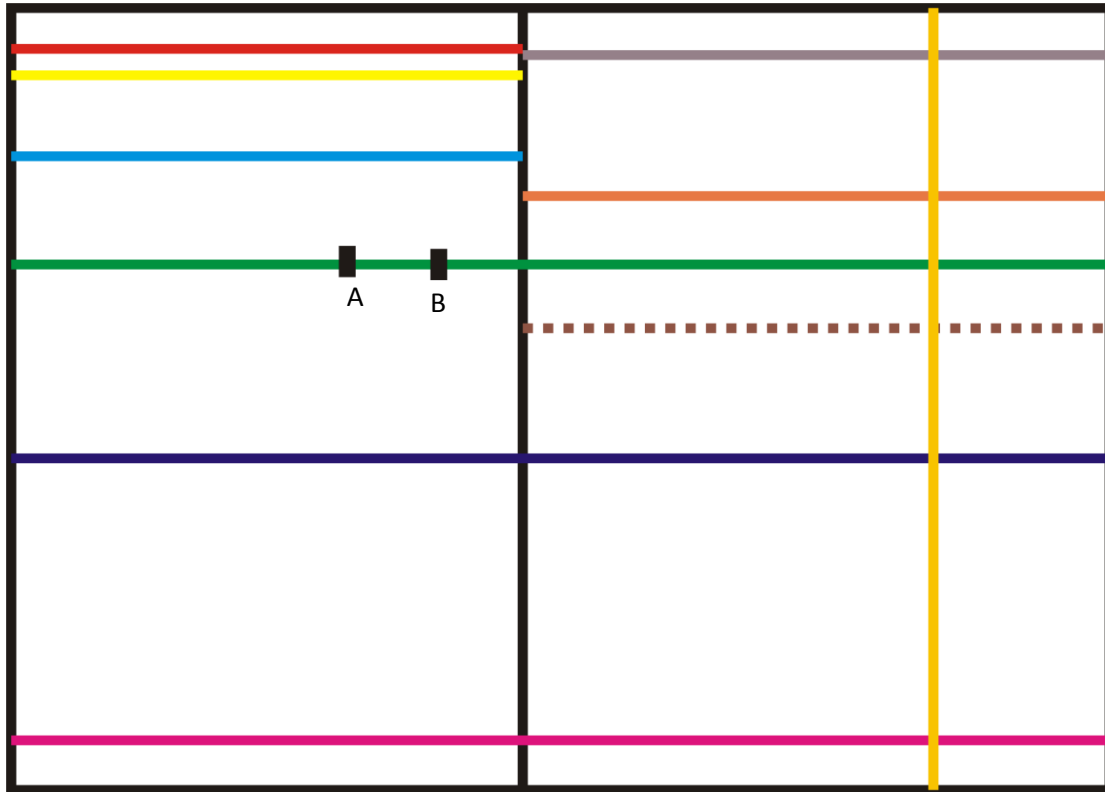
Yemioqe Pa



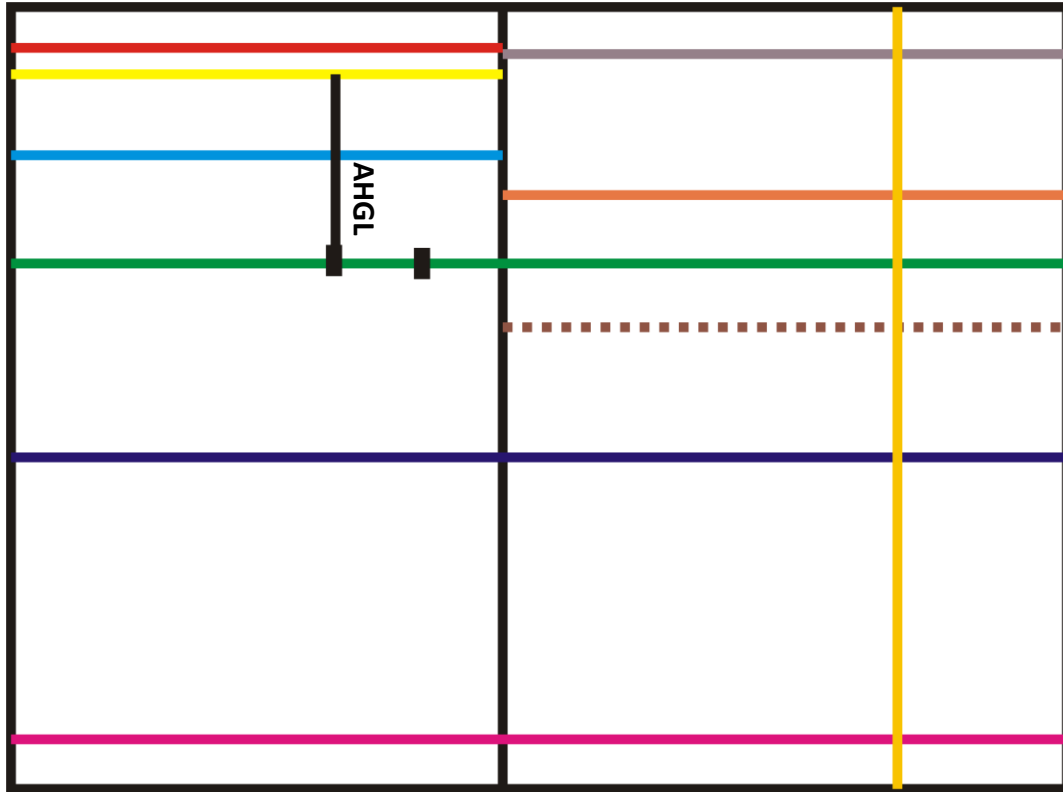
Step 10. measure and mark the bust span



**Step 11** measure and mark the half back measurement on armscye line at the back bodice side and extend by 2, 2.5 or 3 inches for slim, chubby or fat clients respectively. Label your first marking A and the second B



**Step 12** draw a straight line from the half back measurement on the armscye line to the shoulder line and call it armhole guide line (AHGL)



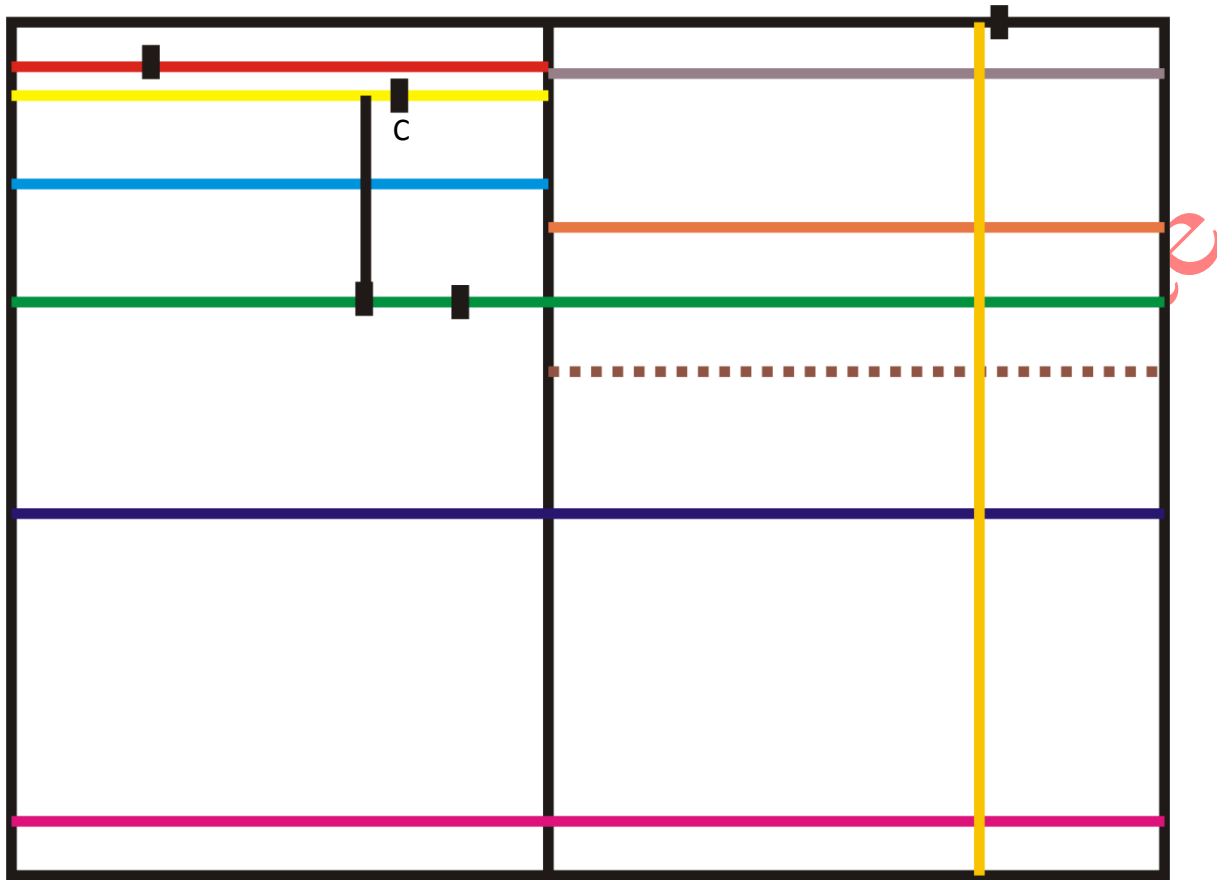
Step 13 measure the width of the neck using this formular

$$\text{Neck width} = \frac{(\text{bust}/8) + 1}{2}$$

On both start lines starting from the center front and center back and call it NP1 and NP2 respectively

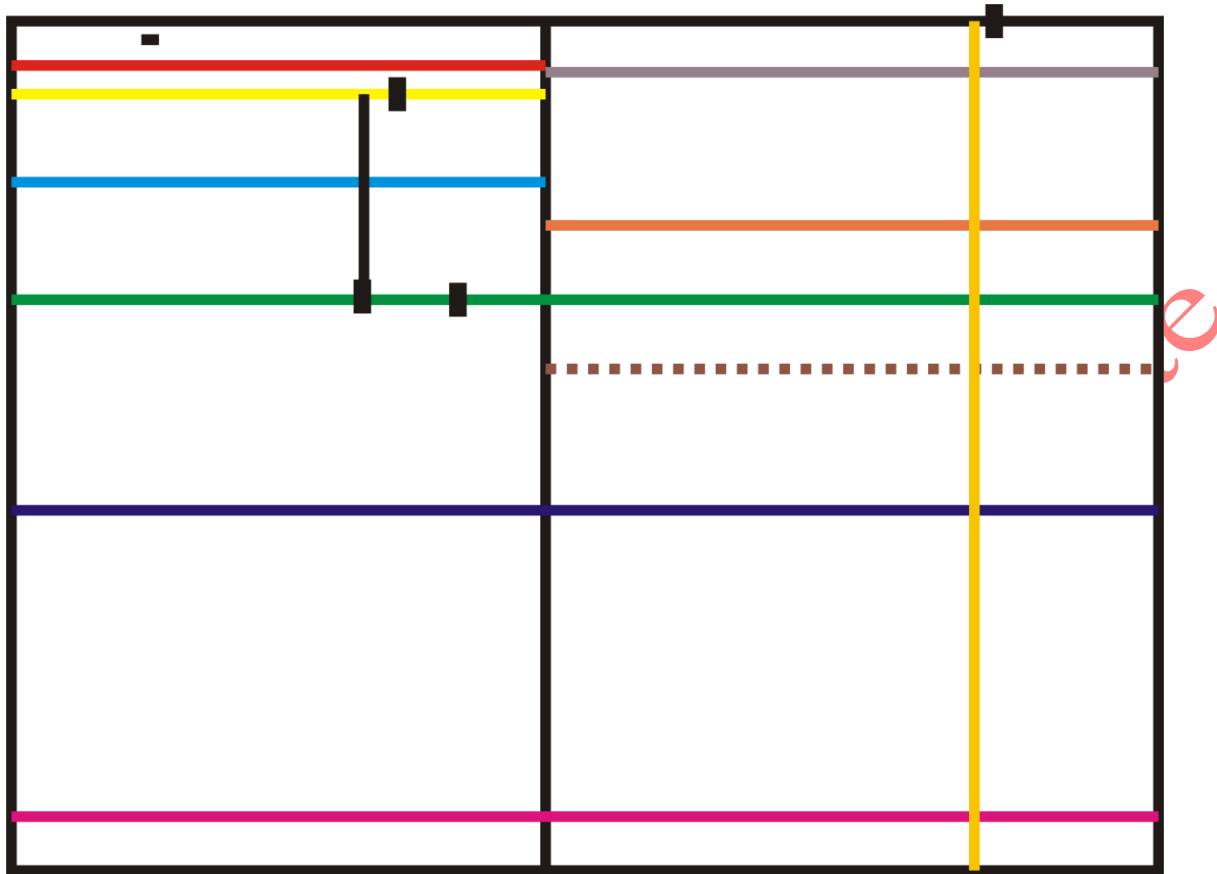
Yemiogo Fashion Design





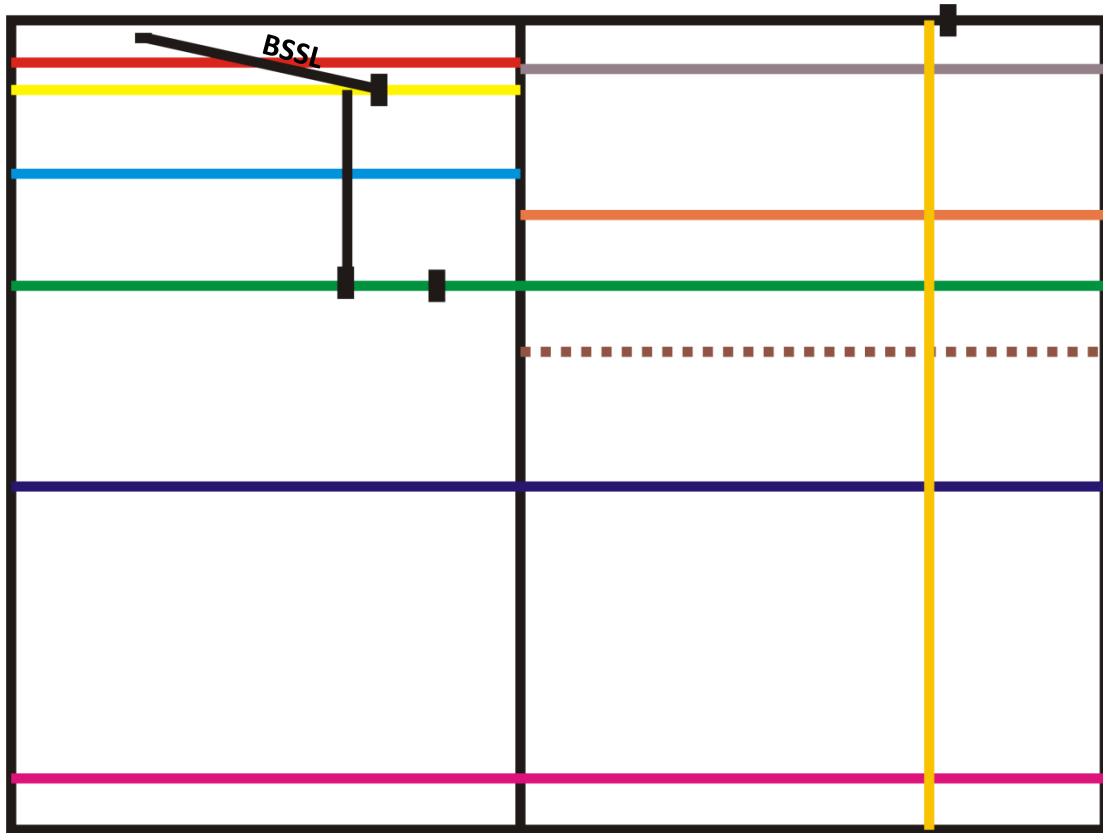
Step 15 measure and mark point C which is 0.75 inches away from armhole guide line on the shoulder line on the back side

Step 16 raise the NP2 by 0.75 inches above its original location



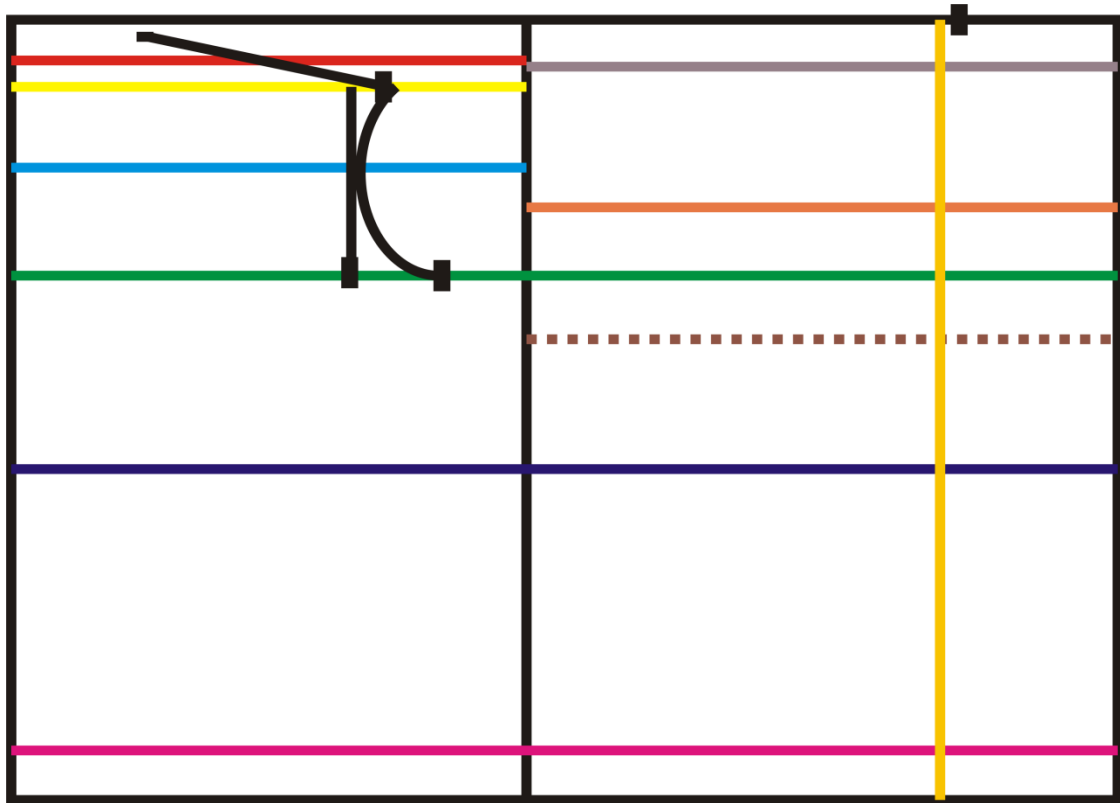
Step 17 draw a straight line from the new NP2 location to C and call it back shoulder slant line (BSSL)

Yemioge Fast



Step 18 draw the back armscye curve with the 3 points using a French curve

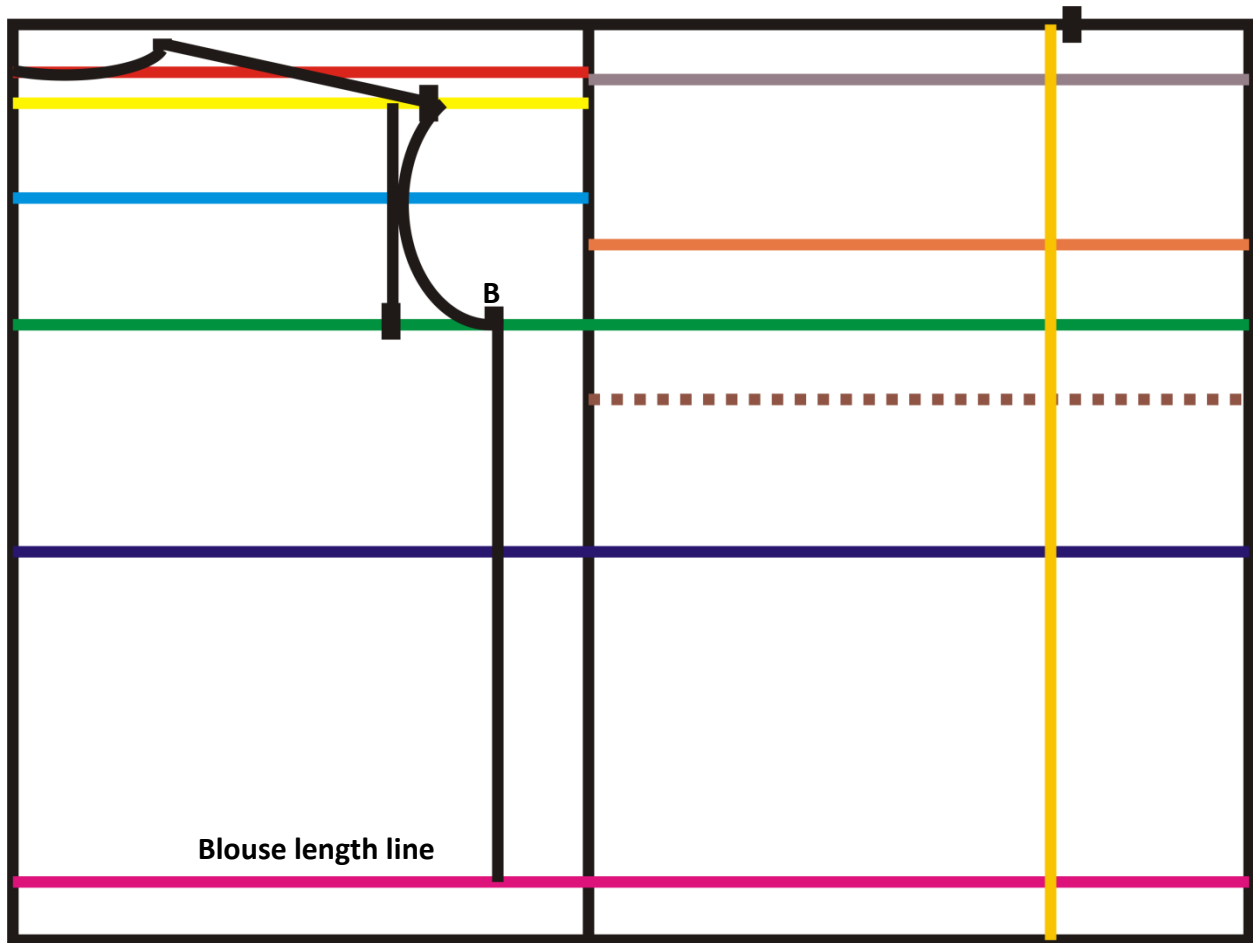
Yemioge Fashion



Step 19 draw the back neck curve as shown

Yemioge Fashion

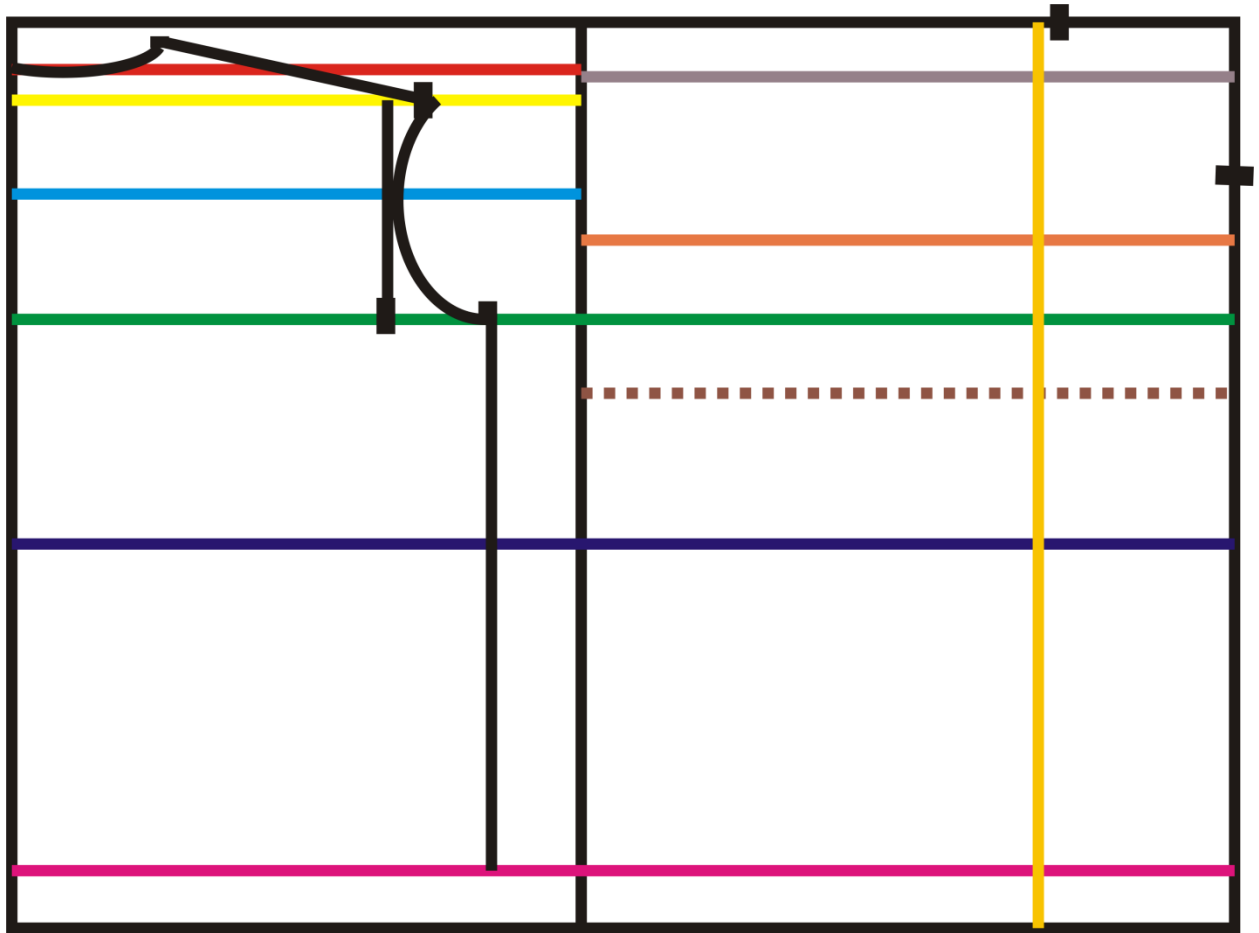




Step 21 on the front bodice side , mark the neck depth .

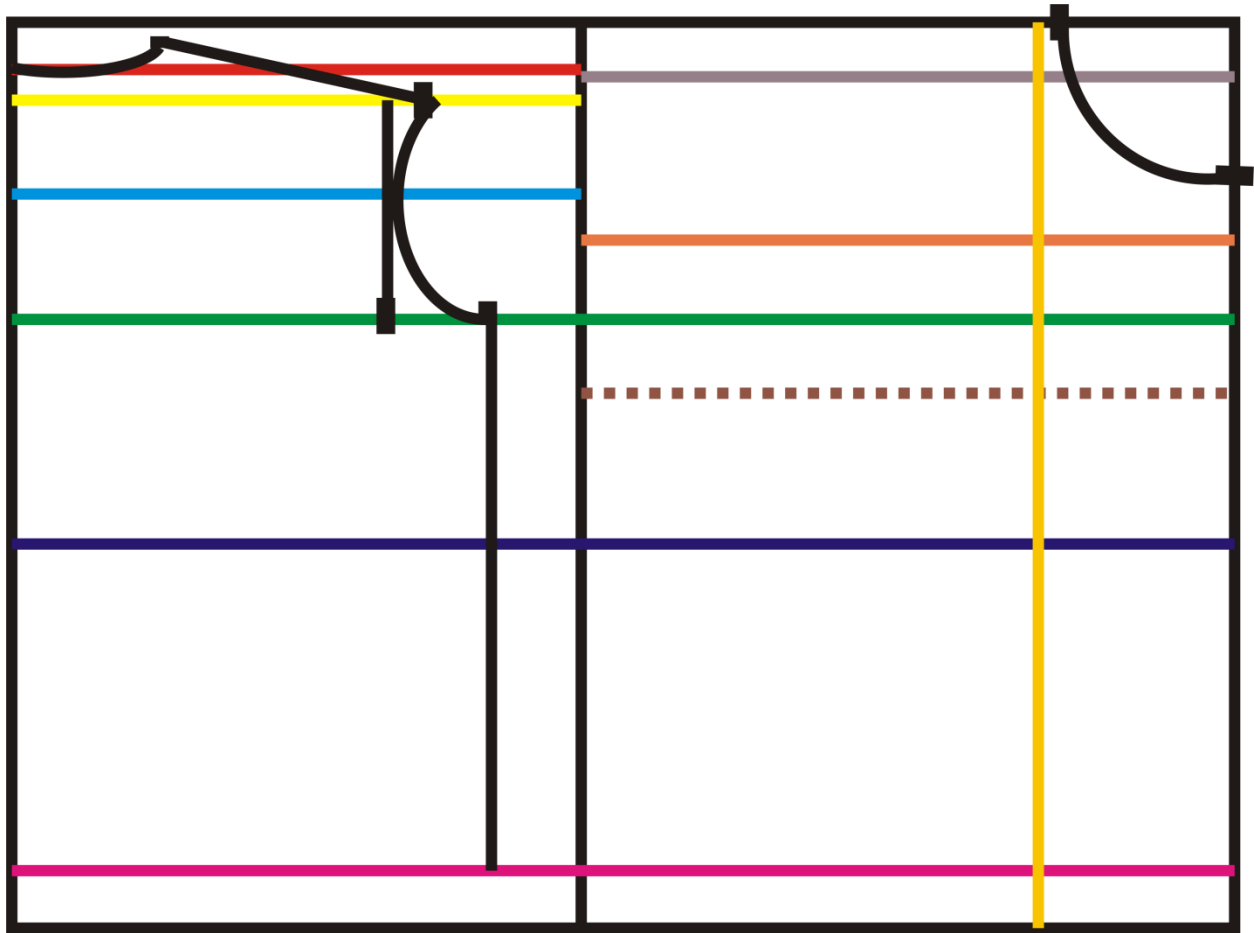
note: ( neck depth = neck width + 1.75 inches)

Yemio88.com



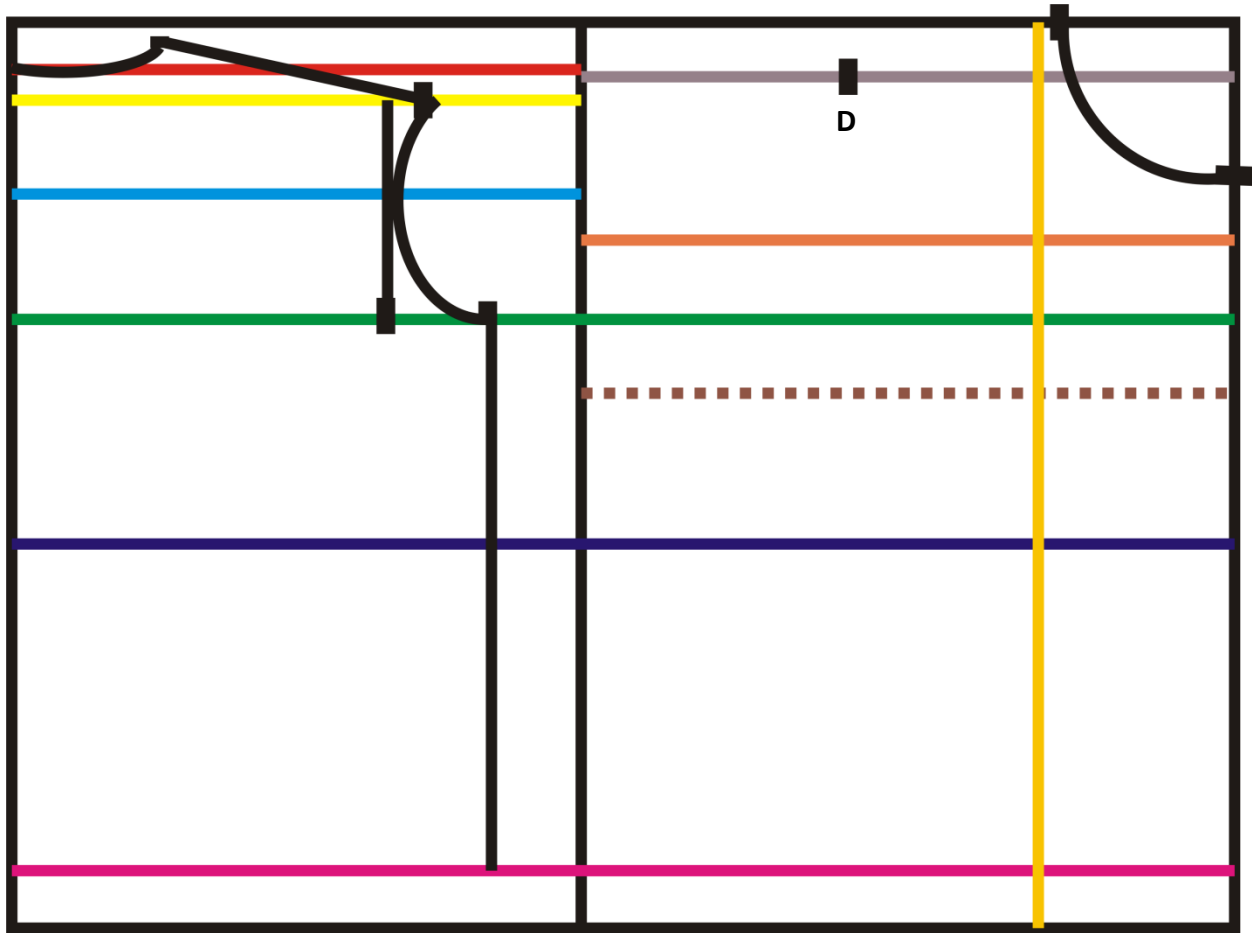
Step 22 draw the front neck curve with the two points marking

Yemioge F.A.



Step 23 measure 6.5 inches from the center front line on the front shoulder line and call it D

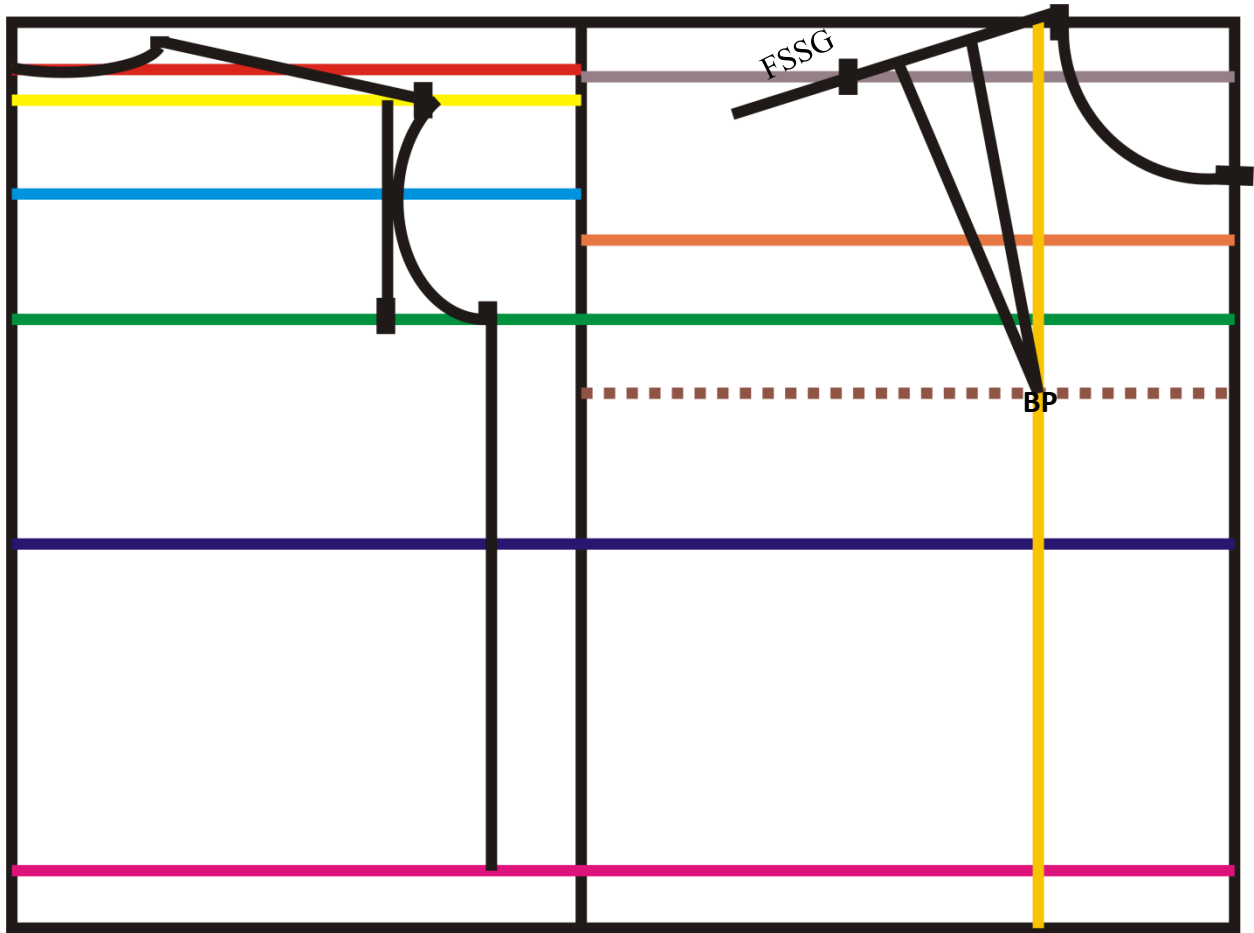
Yemioge F.A.



Step 24 from NP1 draw a straight line that is 3 inches longer than the shoulder slant width measurement using point D as your guide and call it front shoulder slant guide (FSSG) .

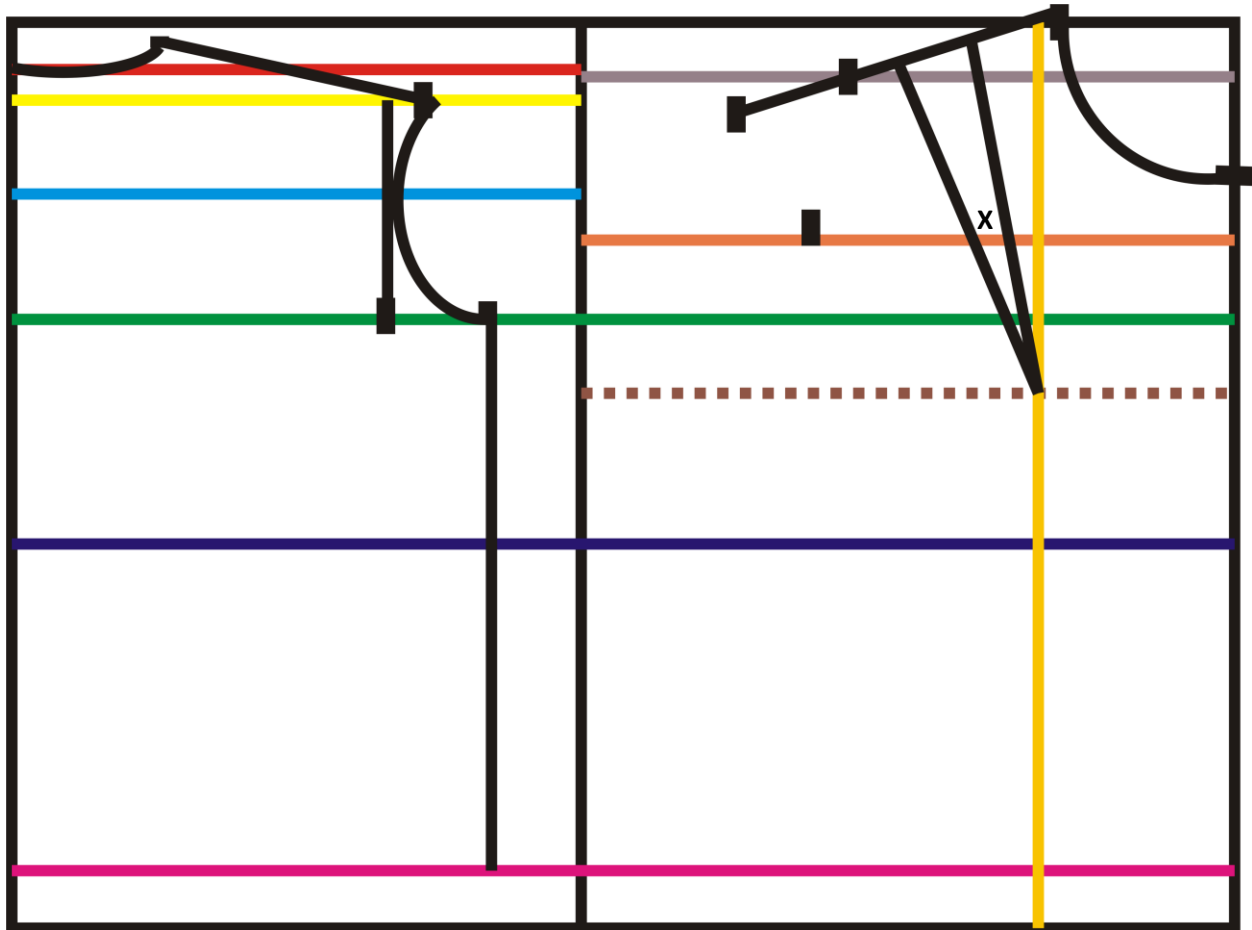
Draw a 3 inch wide dart whose origin is the bust point (BP) on the slant line but 1 inch away from NP1

Yemioo.com



Step 25 measure and mark the half of the chest width plus the allowance covered by the shoulder dart (X) on the chest line

Yemiogeti



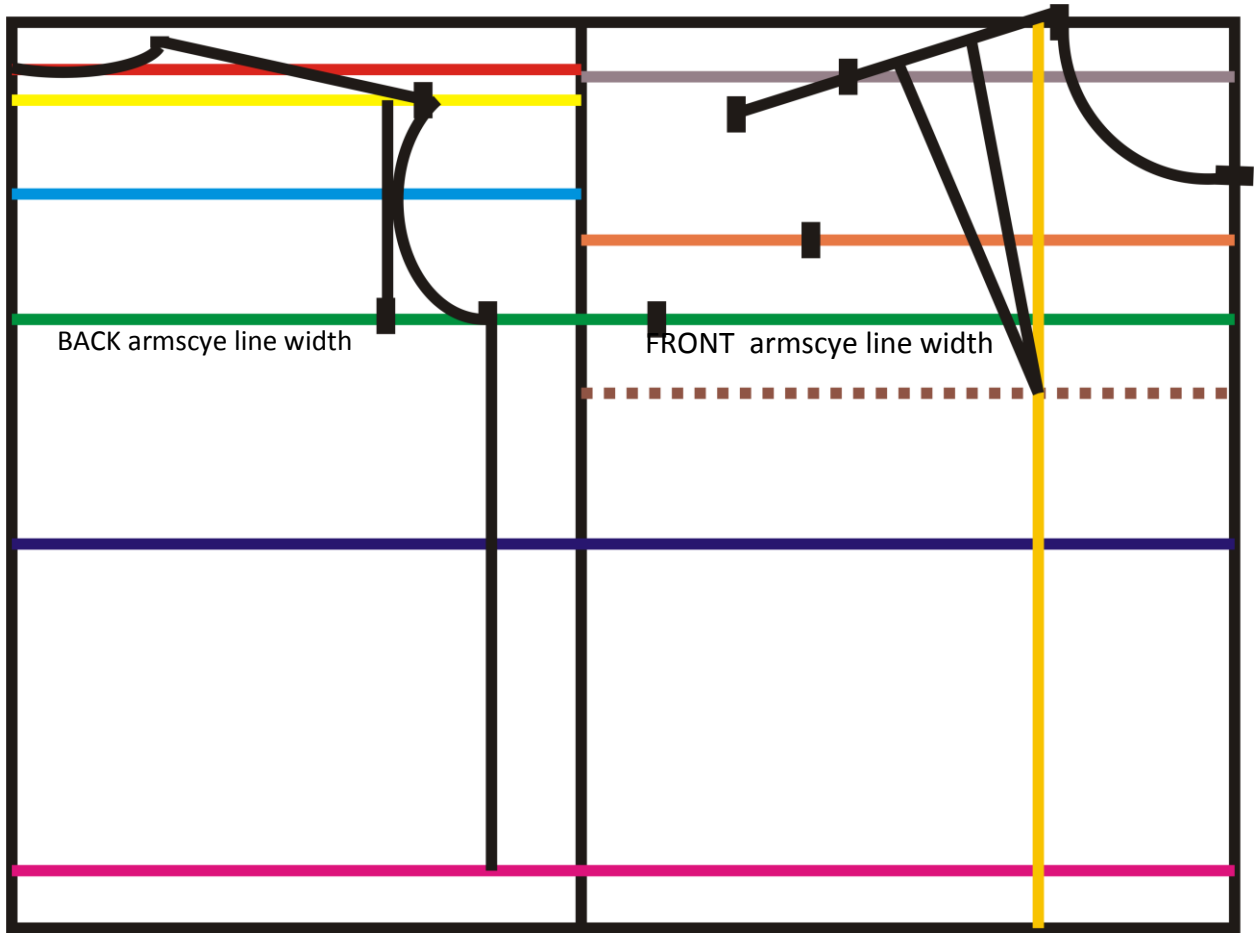
Step 26 using the formular

Front armhole line width =  $(\text{Bust circumference}/2) + (\text{double ease}) - (\text{back armhole line width})$

Note ease can vary from 0.5- 5 inches.

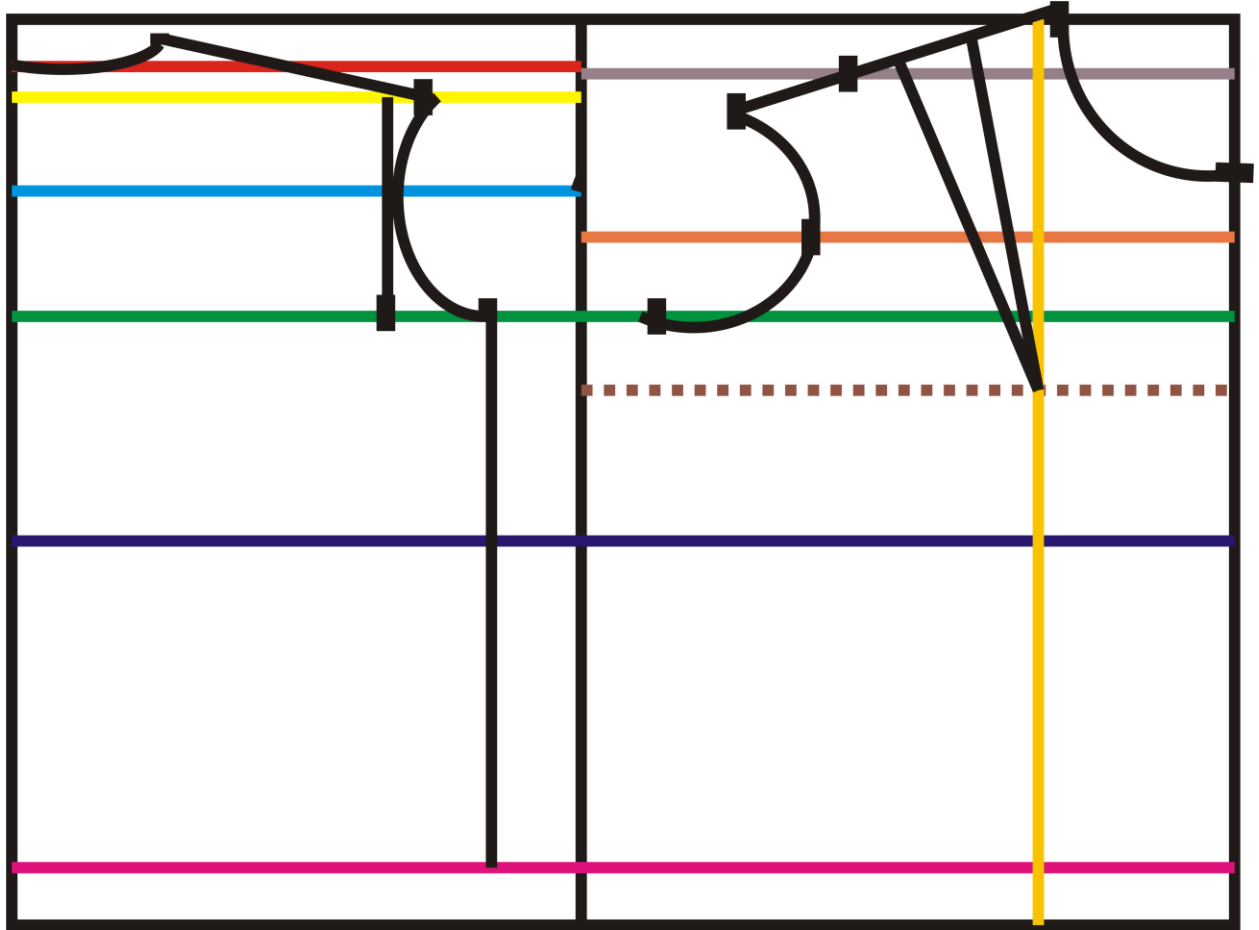
Mark front armhole line width

Yemioo Fa



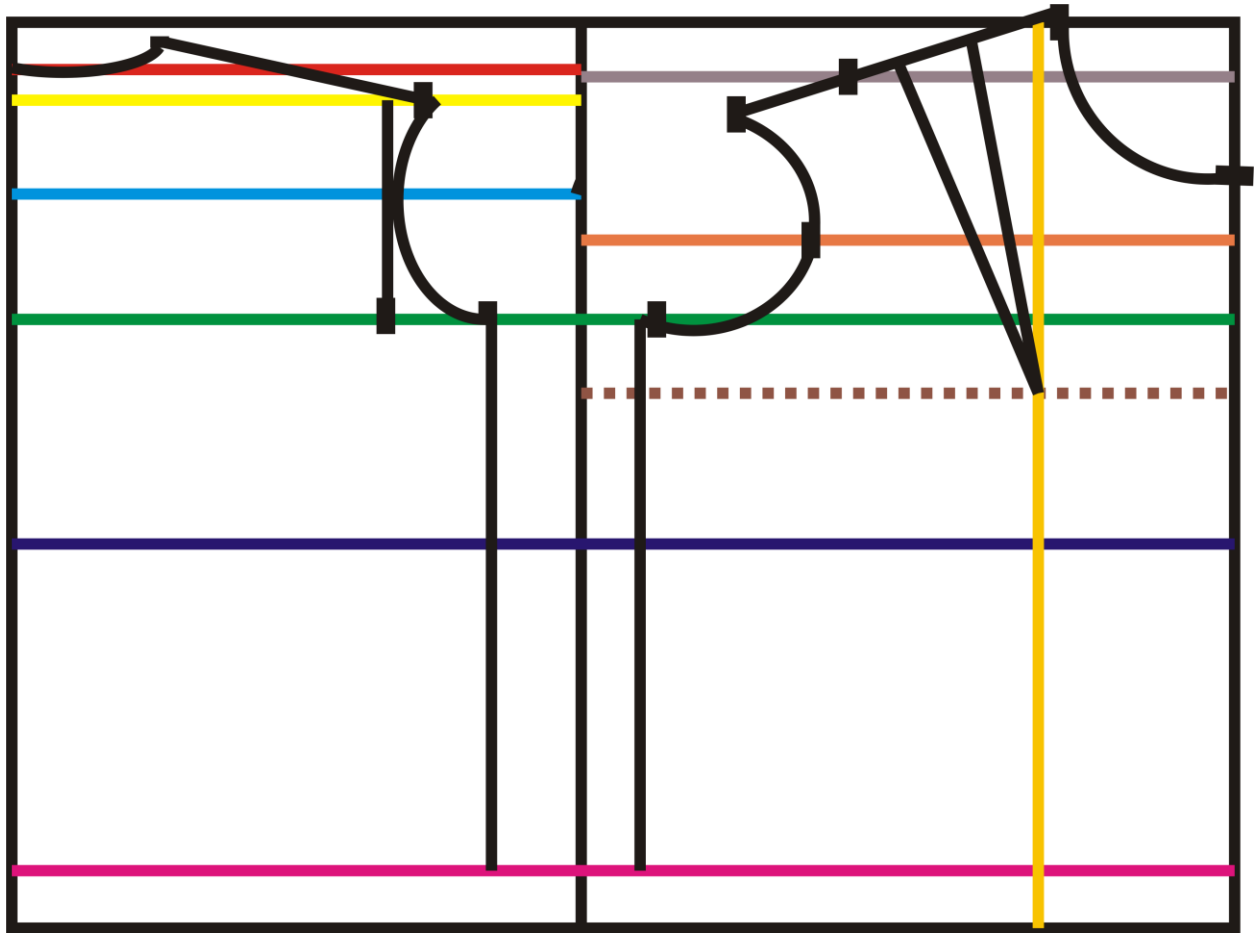
Step 27 use your markings to draw the armscye curve

Yemioge Ltd



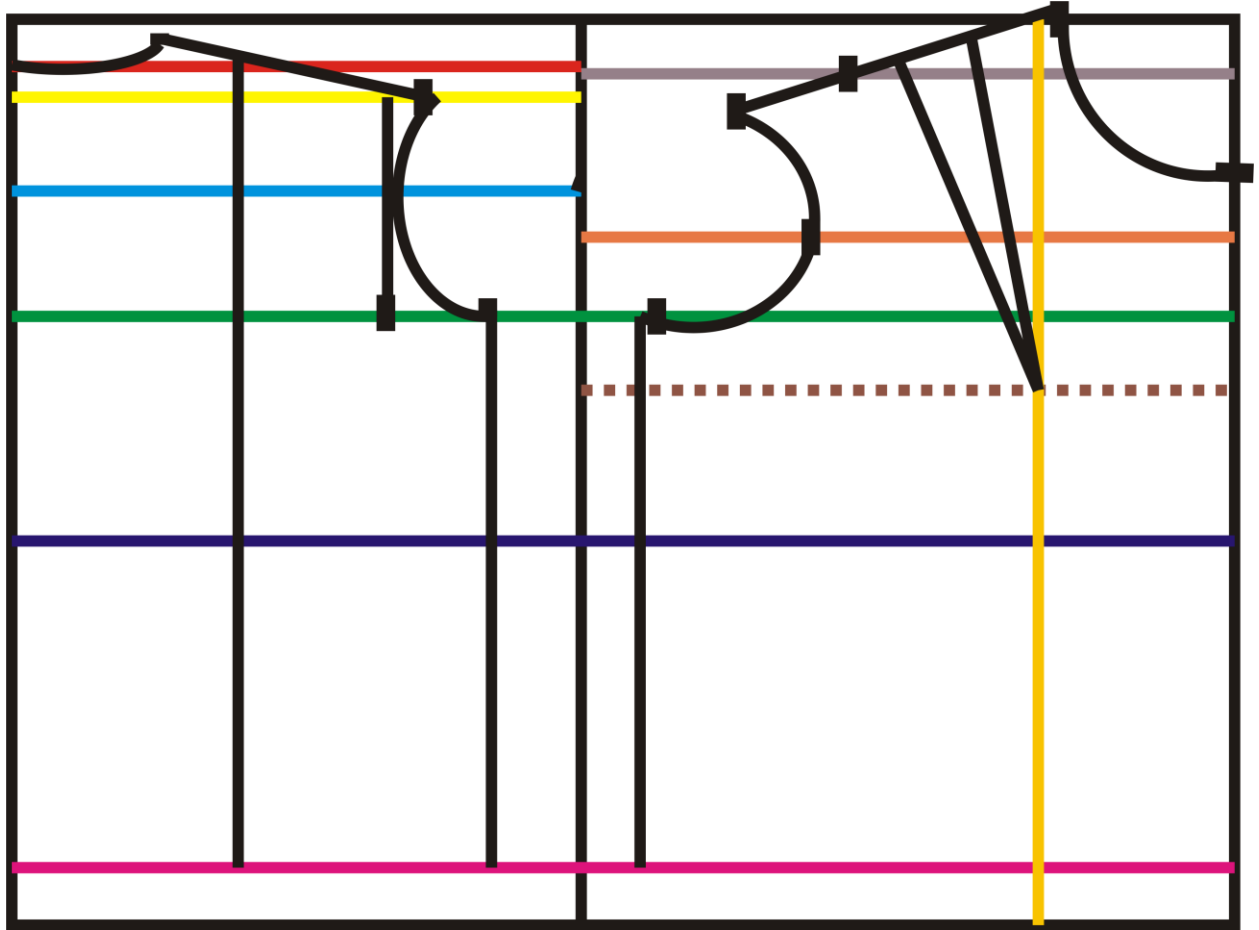
Step 28 draw a straight line from the edge of the armhole curve to the full blouse length

Yemioge F.A.



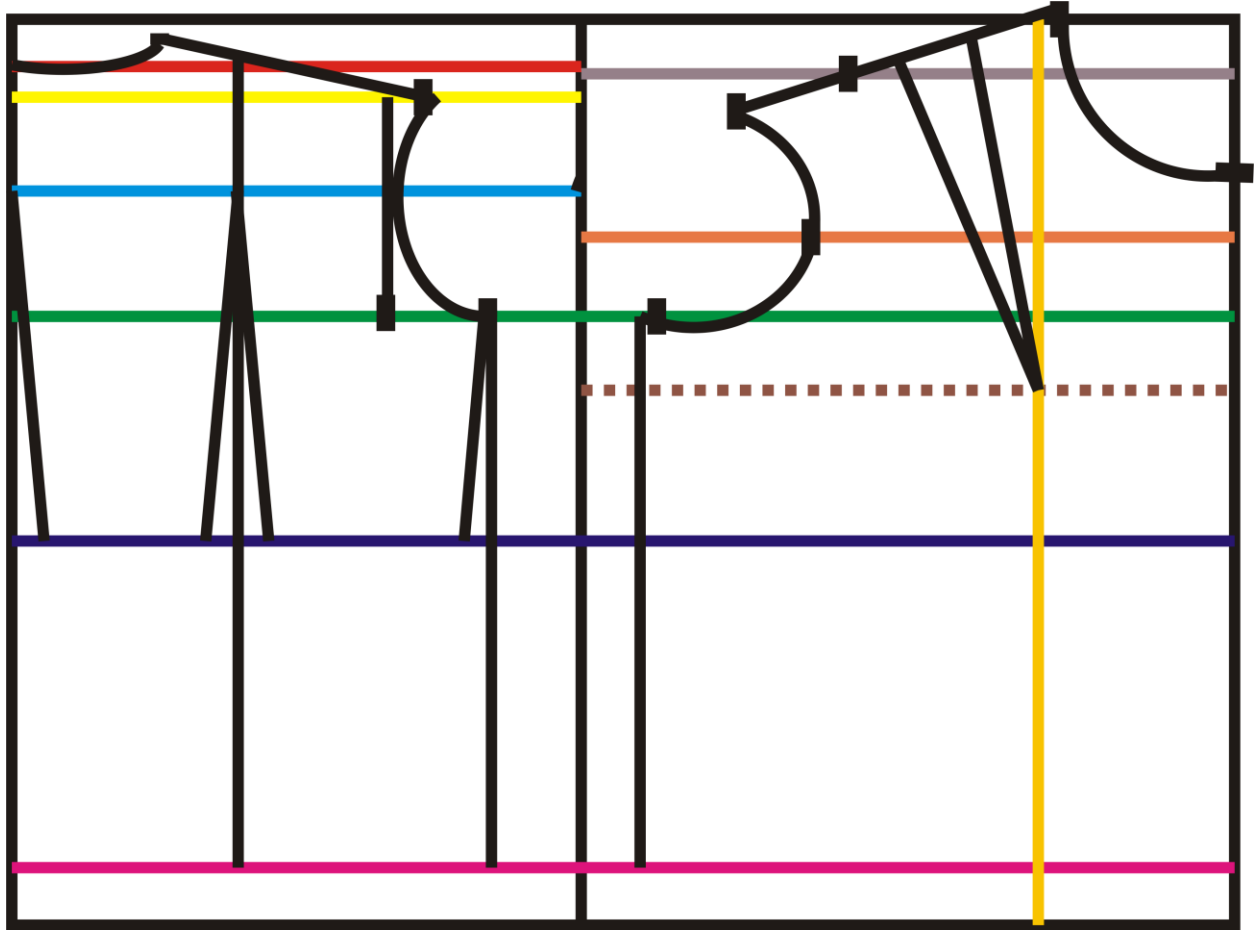
Step 29 divide the back bodice into two and draw a straight line on which the darts are to be placed

Yemioge Pa



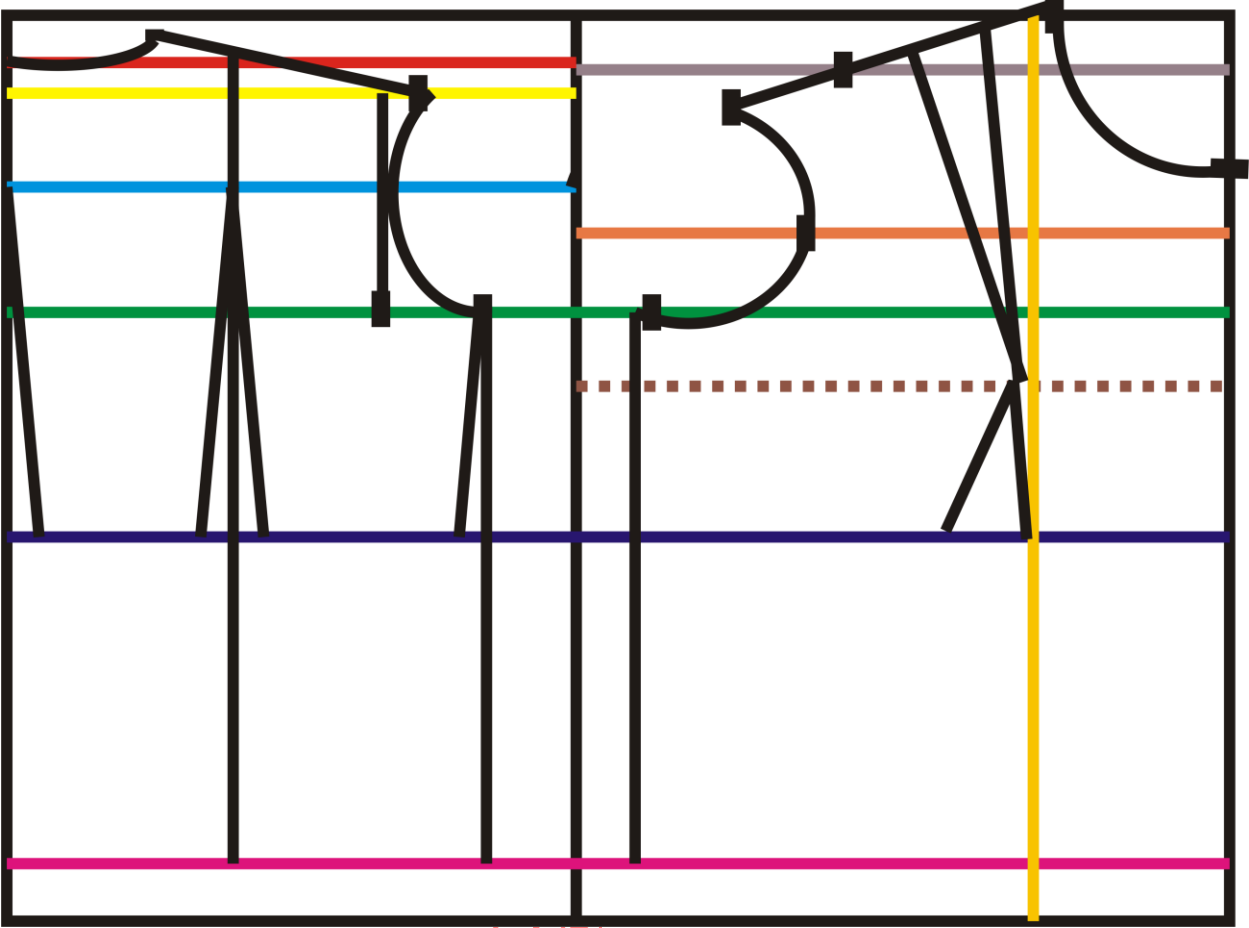
Step 30 measure the waist and shape the waste as shown

Yemioqe Fa

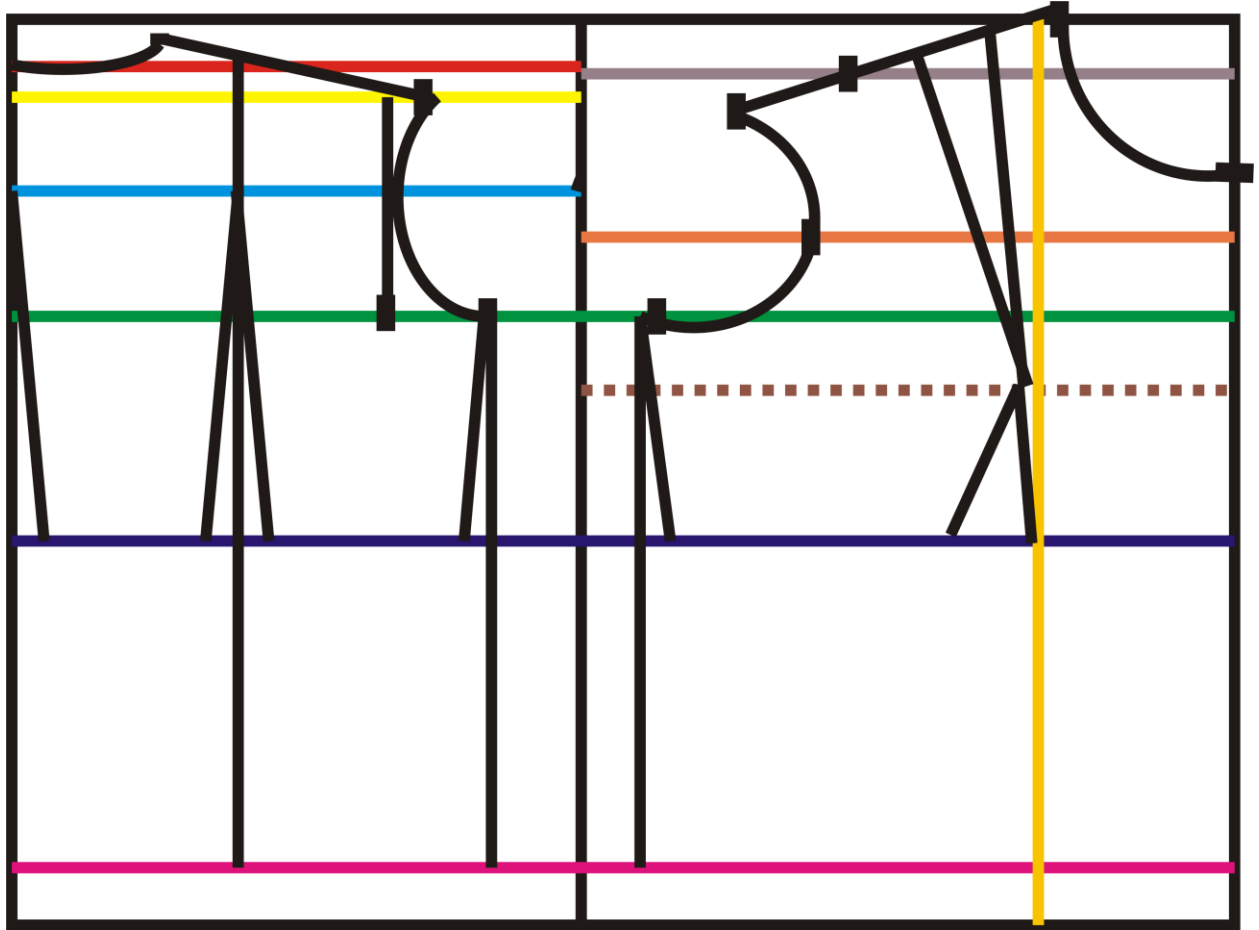


Step 31 measure and shape the front waist as shown below

Yemioqe Pa

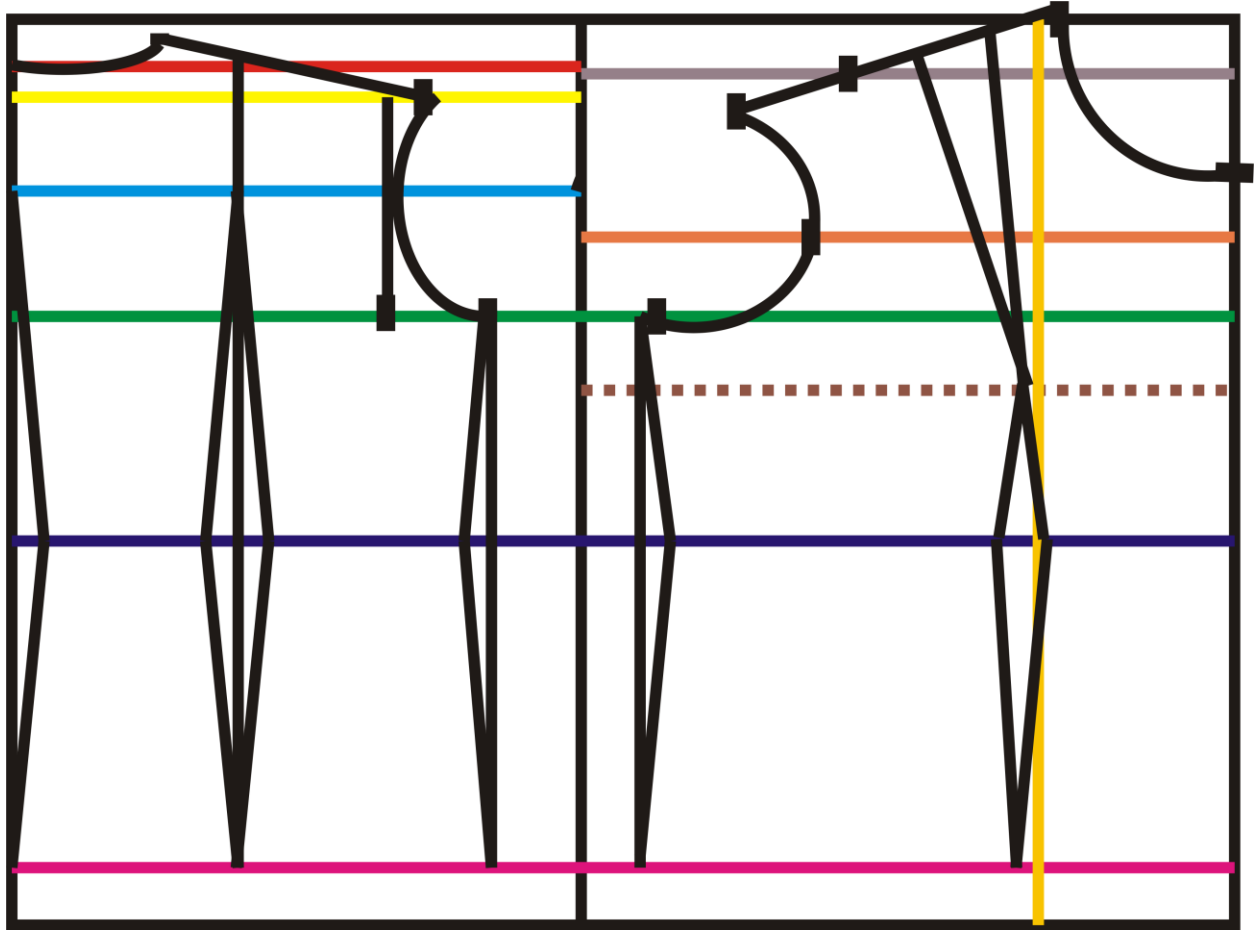


Yemioge Fa



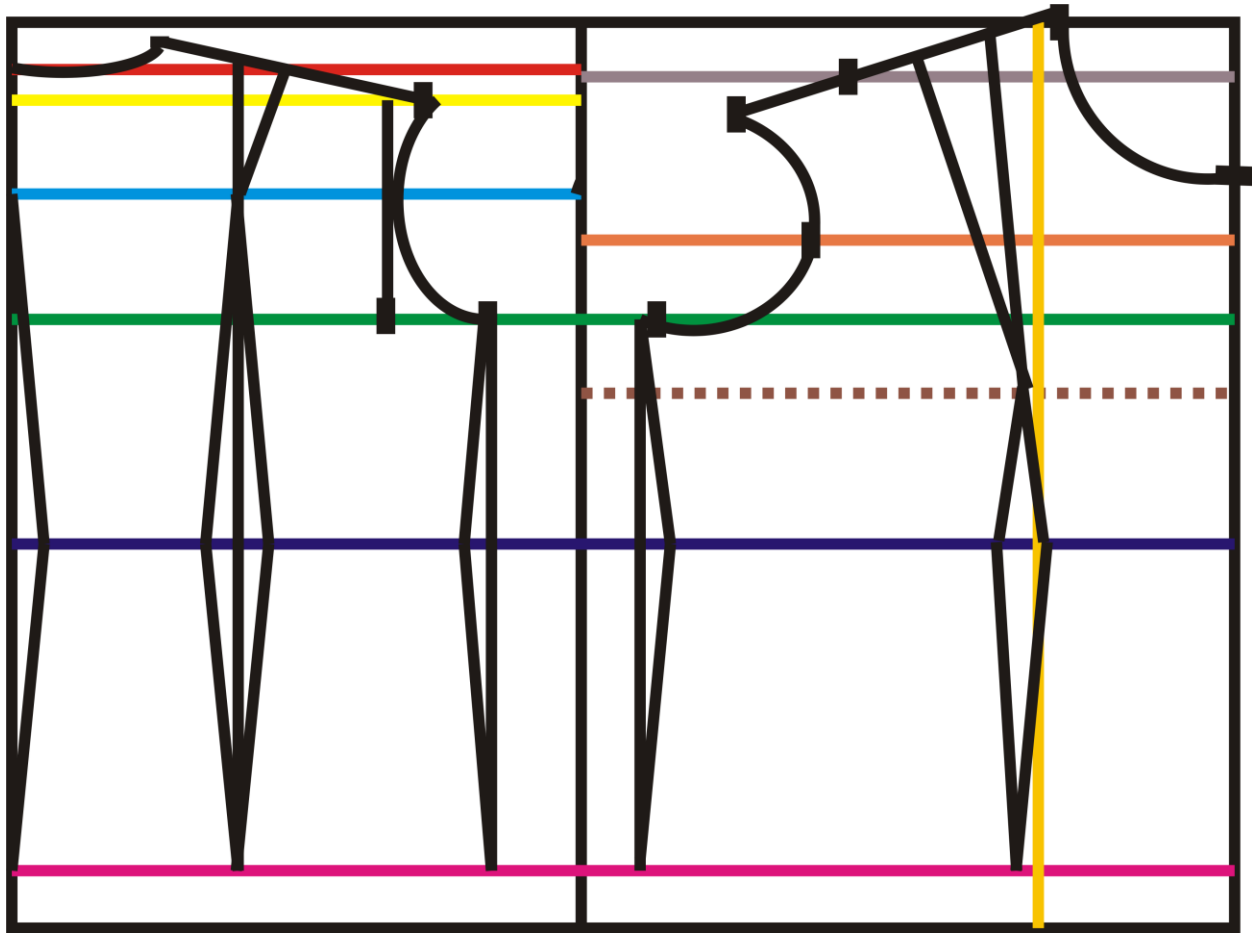
Step 32 complete the shaping as shown below

Yemioge Fa



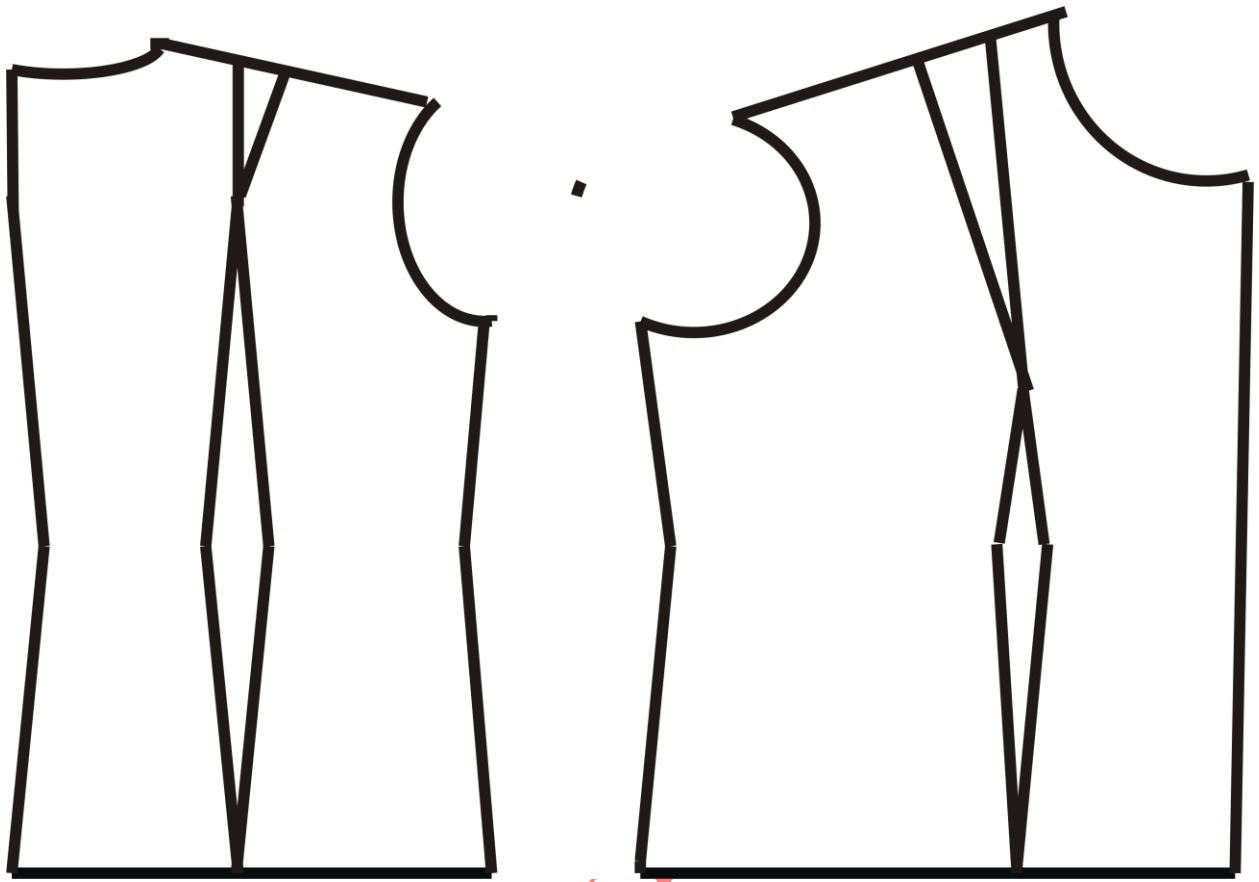
Step 33 position a 0.5 inches dart on the back shoulder slant as shown below.

Yemioqe Fa



Step 34 The sloper is ready for use! Always remember that no seam allowance is added yet since it is a sloper. Add seam allowance all round except at the center front

Yemiogeti



Yemioge Fashion