



UNDERBELLY 2016 INFORMATION PACK

THE EDINBURGH FESTIVAL FRINGE

Each year in August, Edinburgh is transformed into a 24-hour city and is host to the world's largest arts festival comprising of The Edinburgh Festival Fringe, The Edinburgh International Festival, The Television Festival, The Edinburgh Military Tattoo, The Book Festival and The Jazz Festival.

The Edinburgh Festival Fringe (established 1947) stands apart from the others as a festival open to anyone who wishes to bring a show to the Fringe. With over 270 venues to choose from, each year sees a huge variety of shows brought to the Fringe from all over the world. It thrives on creativity and originality and is accessible to anyone and everyone. It is informal, inexpensive and most of all a huge amount of fun. Underbelly runs 15 venues on the Fringe, open to any applicants.

In 2015, the Festival Fringe presented 42,096 performances of 2,695 shows in 279 venues and has approximately 75% market share of all attendance at all Edinburgh's festivals, year round. More than 1.8 million tickets were sold during the 2015 Fringe.

The Fringe attracts over 1,500 accredited members of the media representing 40 different countries around the world and any number of talent scouts, producers and promoters.

Sixty-eight years on, the Fringe Society is now a professional working organization based in Edinburgh and has become a wealth of knowledge for anyone wishing to bring a show to the Fringe. For any advise or matters relating to the Fringe the best person to contact is Barry Church-Woods in the Participants Services department. You can reach him on participants@edfringe.com or by phoning 0131 226 0026. The Fringe website is at www.edfringe.com.

Read on for more about Underbelly in particular.

Underbelly's dates for the Festival Fringe in 2016 are Wednesday 3 August – Monday 29 August inclusive.



AN INTRODUCTION TO UNDERBELLY

Underbelly is a UK-based live entertainment company that runs several festivals and events across the country. Founded in 2000 by directors Ed Bartlam and Charlie Wood to operate one venue at the Edinburgh Festival, Underbelly has grown to include the Udderbelly and London Wonderground Festivals at Southbank Centre in London, The Comedy Hullabaloo in Stratford-Upon-Avon, Edinburgh's Christmas Festival and, for the first time in 2015, Udderbelly Festival Hong Kong, as well as an ever-growing programme at the Edinburgh Festival Fringe. Through Underbelly Productions, we also produce and promote live shows for UK and international touring. Underbelly also produces large-scale events, most recently including West End Live, the Rugby World Cup Fanzone in Richmond and Pride in London. In short, Underbelly is all about entertainment. In 2015, over 1 million people bought tickets to our shows and attractions, and our giant upside-down purple cow is now an iconic annual fixture of the London and Edinburgh skylines.

Underbelly Cowgate was the first venue operated by Underbelly during the Edinburgh Fringe – situated in Edinburgh's Old Town, it consists of 7 venues ranging from 60 to 185 seats. Since then the company has grown and added new venues.

In 2006, we added the iconic upside-down purple cow venue as part of Udderbelly's Pasture in Bristo Square. 2011 saw the launch of two new venues in the Bristo Square area; The Dairy Room and Wee Coo and in 2012 we introduced three new venues into the herd, aptly named Ermintrude, Clover and Daisy and a new 200-seat black box theatre space at the Festival Theatre named Topside. 2015 saw the arrival of the Circus Hub, two new large domed spaces specifically created for a programme of carefully curated national and international circus.

As Bristo Square & McEwan Hall undergo redevelopment for the next two years, the iconic Udderbelly venue and the 60-seat Wee Coo will be relocating to nearby George Square, where it will continue to host the best in comedy, circus and more.

We love Edinburgh and we love the festival. It's the best place to be in August!



WHY UNDERBELLY?

Underbelly is one of the largest and most popular venues at the Edinburgh Fringe and in 2015 (our 16th Festival) we had a bumper year, selling over 200,000 tickets. Our dedication to programming challenging new work across theatre, comedy and music and our brand reputation as a fun, quirky and dynamic venue has kept Underbelly at the forefront of the Fringe and the Festival scene for the last 15 years.

Underbelly has created a vibe. It understands that Festival audiences are there to do more than just see a show but to wallow in the whole festival - without the mud!

We work closely with performers and producers to create a collaborative and creative environment within which to present work, and have a reputation for identifying and presenting new work and for encouraging established acts to try out new material.



'THE UNDERBELLY IS ONE OF THE MOST EXCITING, ATMOSPHERIC SPACES ON THE FRINGE AND, INCREASINGLY, ONE OF THE MOST IMPORTANT' (THE GUARDIAN)

2015 HIGHLIGHTS

2015 was Underbelly's most successful Fringe ever, critically and at the box office, resulting in a spate of award-winning shows, a glittering array of five-star reviews and a programme seen by hundreds of thousands of ticket buyers.

The Australian comic, **Sam Simmons** (pictured), performing in Underbelly's Topside, won the prestigious Fosters Edinburgh Comedy Award.

Penny Arcade won a coveted Scotsman Fringe First Award with her show *Longing Lasts Longer* and Luke Barnes' new show **Weekend Rockstars** was awarded the Musical Theatre Network Development Award. **Penny Arcade** also won a sought-after Herald Angel, awarded by the newspaper to the best shows at the Fringe overall.

Underbelly's brand new **Circus Hub** won a Herald Angel for Success in the Face of Adversity and the circus show **B-Orders** won a Total Theatre award, with four of our other shows garnering nominations.

The **Underbelly IdeasTap Award** ran again this year, showcasing four brilliant pieces of new writing: *Much Further Out Than You Thought*, *Brute*, *The Eulogy of Toby Peach* and *The Hitchiker's Guide to the Family*, as did the **Underbelly Adelaide Award** which brought us the terrifying but thrilling site-specific theatre piece **CUT**.

UNDERBELLY COWGATE

The original venue, Underbelly Cowgate, is unlike any other venue on the Fringe, comprising of 7 venues and 4 bars spread over four floors of disused bank vaults, with entrances on both Cowgate and Victoria Street, just off George IV Bridge. The spaces within are not your usual run of the mill black boxes, they are atmospheric and all have their own personality. Ranging from 60 – 185 seats, we have spaces to suit all types of show and will work with companies to ensure the best use of our performance spaces. When considering your application, we will discuss with you what kind of space you are looking for and what spaces we think are most suitable. All our spaces are technically equipped to a high standard. We provide standard 4 wash covers in the majority of our spaces and CD or Mini Disc players in all. (Please see the technical specifications for each space for the detailed list of equipment and the space diagrams for layout). We provide room for company specials on the rig in most spaces and can source extra lights and kit through our supplier. In the run up to the Festival, our Production and Technical Managers will be available to answer questions and help in the preparation of your run.



Please see our website (www.underbellyedinburgh.co.uk) for many more images and information regarding all of our different spaces.

'MAKE A PILGRIMAGE TO UNDERBELLY' (THE SCOTSMAN)

UNDERBELLY'S COW CAFE

Underbelly's Cow Café, open early until late, provides a relaxing haven to sit down, chill out, have a coffee, get on-line and plan your next programme of shows. Situated at the bottom of Underbelly Cowgate, the Cow Café was introduced five years ago, running as a café during the day and as a venue at night providing Underbelly with a space for free entertainment. We've been known to have ceilidhs, slam poetry nights, treasure hunts and sketch-offs, to name but a few. Got an idea of an event you'd like to run in the Cow Cafe? Drop us a line at enquiries@underbelly.co.uk, we're always looking for new and interesting ideas!

UNDERBELLY GEORGE SQUARE



As Bristo Square & McEwan Hall undergo redevelopment for the next two years, the iconic Udderbelly venue is relocating to nearby George Square, where it will continue to host the best in comedy, circus and more. Comprising of two venues, Udderbelly and the Wee Co, George Square is the new hub of the Festival.

At the centre of George Square is the unmissable Udderbelly, Edinburgh's most unique venue. A construction of aluminium, steel and PVC it stands 18m high - the height of 14 cows stood on top of each other! Udderbelly with its buzzing al fresco bar and high profile acts is far more than just a 410 seat performance venue, it's a place to experience the true eclecticism of the Edinburgh Festival with the bustling pasture with bars and food outlets outside. Nestled in beside the purple cow, also in George Square is the Wee Co, an intimate 60 seat black box space.

UNDERBELLY MED QUAD & UNDERBELLY POTTERROW

Behind George Square, in the University's Medical Quad, are Ermintrude (200 seats) Clover (60 seats) and Daisy (42 seats).

Underbelly's Topside will also return this year, located directly behind Edinburgh's Festival Theatre, only a short walk away from the George Square hub. This 200-seat black box studio space is perfect for theatre productions and we will be looking to program innovative, exciting new writing coming to the Fringe.

Underbelly's hub at George Square and our proximity to Gilded Balloon, Pleasance Dome and Assembly, makes it a natural meeting point for groups and people grabbing a bite to eat or just soaking up the festival atmosphere. We have children's activities, tasty street food stalls and an excellent bar.

Please see our website (www.underbellyedinburgh.co.uk) for many more images and information regarding all of our different spaces.

THE ABATTOIR

'IT'S LIKE STEPPING INTO NARNIA' (INDEPENDENT)

This Abattoir is less meat and grit, more meet and greet. A haven for our performers, producers, directors and supporting crew to relax and socialise in. Performing at any of our Underbelly venues will automatically gain you membership to Underbelly's private members bar. You'll just have to find it first...

UNDERBELLY'S CIRCUS HUB

Underbelly's Circus Hub on the Meadows launched in 2015. It consists of two spaces, The Lafayette (750 capacity) and The Beauty (250 capacity).

If you would be interested in bringing a show to Circus Hub in 2016 or would like more information on the venue, please contact our Circus Hub Curator Stephen Makin on Stephen@underbelly.co.uk



WHERE WE ARE

All our venues are in the heart of the fringe in the old town.

UNDERBELLY, COWGATE

The original venue, Underbelly Cowgate, is spread over four floors of disused bank vaults, with entrances on both Cowgate and Victoria Street, just off George IV Bridge. This is an excellent location close to the Royal Mile, Waverly station and Bristo Square.

UNDERBELLY, GEORGE SQUARE

The larger than life Udderbelly has become the hub of the Fringe with its

buzzing Al Fresco bar and high profile acts. The proximity to Gilded Balloon, Pleasance Dome and Assembly makes it a natural meeting point for groups and people grabbing a bite to eat or just soaking up the festival atmosphere. We have children's activities, tasty street food stalls and an excellent bar!

THE MEDICAL SCHOOL BUILDING

Located behind George Square in the Medical School Building, you will find our three new spaces Ermintrude (200), Clover (60) and Daisy (42).

TOPSIDE

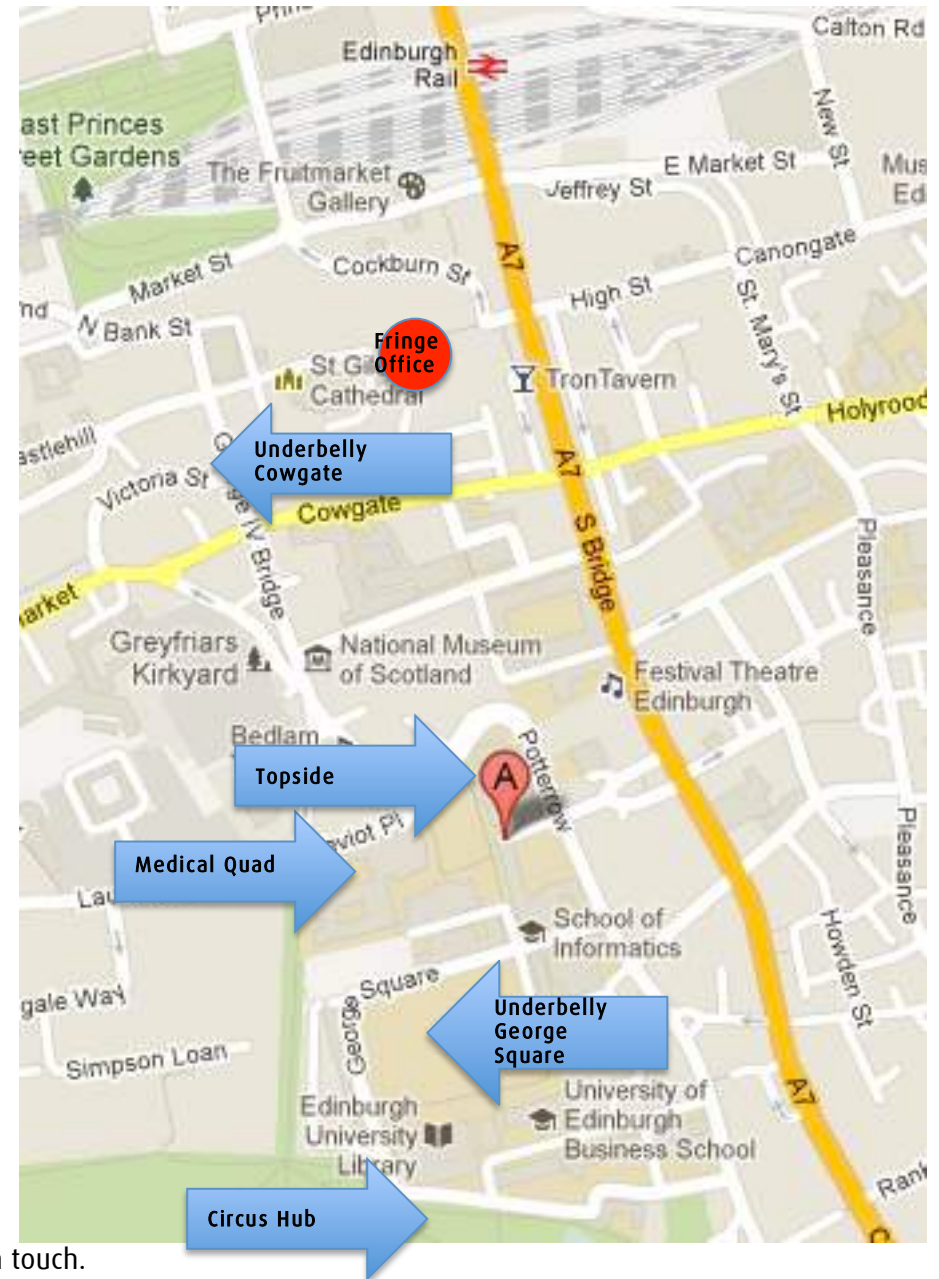
Located directly behind Edinburgh's Festival Theatre and only a 2 min walk from Bristo Square.

CIRCUS HUB

Brand new for 2015, Underbelly's Circus Hub took up residency on the Meadows. With two domed spaces, The Lafayette and The Beauty, Underbelly brought a specially curated programme of circus from all over the globe, the likes of which had never been seen at the Fringe before.

OTHER

Each year we also host some site-specific shows in our programme, performed in toilets and people's flats to shipping containers and warehouses in Leith. If you have an idea for a show and want to be part of our programme please get in touch.



WHAT WE PROVIDE

- Fully equipped spaces with technical support
- Ushers, front of house, box office and support staff
- Press and marketing services, support and resources
- Entry into our venue brochure, show listing on Underbelly website
- Computerized box office linked to the Fringe Office and cross-selling with other major Fringe venues
- Dedicated telephone booking line
- Secure online ticket sales in advance of the Fringe
- Shared dressing and storage facilities with coded entry for security (where applicable)
- 4-hour technical rehearsal prior to your show opening in your space
- Company complimentary tickets for other shows in Underbelly venues, subject to availability
- Company discounts at our bars

WHAT YOU PROVIDE

- First and foremost, a great show!
- Fringe Programme entry
- A Press and Marketing strategy
- Publicity material (including flyers and posters - subject to venue approval)
- Prompt payment of all deposits, fringe registration and publicity fee by the deadlines given prior to the Festival
- Supply of any other show and publicity material/information/ images by given deadlines
- Completed technical questionnaires and risk assessments by given deadlines
- Technicians to operate your show (or we can provide operators for £20 each per show)
- A Company insurance policy. We take out a full public liability policy for the venue but ask that companies also take out their own third party liability insurance and insure against the loss/damage of their own equipment



SPACES OVERVIEW

UNDERBELLY COWGATE

BIG BELLY: Capacity 60

Large cavernous room with vaulted and corrugated iron ceiling. End-on raked seating facing a flat stage. Ideal for larger scale theatre, physical work, small circus shows and site-specific performances. Wonderfully atmospheric.

Stage Size (W x D x H): 20' x 20' / 6.1m x 6.1m **Rig Height:** 3.5 m to underside.

BELLY BUTTON: Capacity 123

An intimate, end on space with a flat stage and fully raked seating. The stage provides some wing space and good backstage storage. Suitable for comedy and theatre. This year we are hoping to air-condition this space.

Stage Size (W x D x H): 18' x 12' / 5.5m x 3.6m **Rig Height:** 2.8 - 3 m

BELLY DANCER: Capacity 70 – 180 depending on seating

A music and comedy venue at night, an intimate, flexible theatre/comedy venue during the day. Seating is flexible on three sides of the small thrust stage. We've had all sorts in here so please call to discuss your ideas. Fully air-conditioned.

Stage Size (W x D x H): 12' x 12' x 1' / 3.6m x 3.6m x 0.3m

DEHLI BELLY: Capacity 60

It's a small, end on studio space with some flat seats and small wings, which suits very small-scale theatre productions and comedy/sketch shows. Intimate and exciting.

Stage Size (W x D x H): 12' x 8' x 1' / 3.6m x 2.4m x 0.3m

IRON BELLY: Capacity 60

Wonderfully atmospheric, Iron Belly is a disused bank vault with an arched ceiling and a site-specific feel. End on and partially raked seating and ideal for theatre and small-scale physical theatre.

Stage Size (W x D x H): 14' x 12' / 4.2m x 3.6m **Rig Height:** 2.75 m to underside.

BELLY LAUGH: Capacity 125

Intimate comedy venue with flat seating wrapped around a centre, semi circular shaped stage. Good access from the dressing room behind stage. Ideal for comedy and cabaret.

Stage Size: 12' at widest point, 8' at deepest point and 1' high / 3.6m x 2.4, x 0.3m

WHITE BELLY: Capacity 150 - 185

Ideal for theatre and comedy, White Belly is our largest capacity seated space in Cowgate. It offers end on seating with raised stage and partial raked seating. This space is air-conditioned.

Stage Size (W x D x H): 18' x 10' x 1' / 5.5m x 3.0m x 0.3m **Rig Height:** 2.8 m

UNDERBELLY GEORGE SQUARE

UDDERBELLY: Capacity 410

Underbelly's purple cow with a stage suitable for all theatre, comedy, music, dance and circus. Seating is arranged in a horseshoe configuration of 8 – 10 rows of seating around a flat floor stage on a 10' rake, creating an intimate yet flexible environment.

Stage Size (W x D x H): 8.5m x 4.8m x 0m

THE WEE COO, Capacity 60

A small, cosy, purpose built space, located next to the Cowbarn in the Reid Hall Courtyard. Perfect for stand up, sketch or small scale theatre.

Stage Size (W x D x H): 2.6m x 2.6m

UNDERBELLY MED QUAD

ERMINTRUDE: Capacity 200

Located in Edinburgh University's Medical School building, this room usually used as a lecture theatre, will be transformed into a wonderfully comfortable 200 seat end on theatre/comedy space.

Stage Size (W x D x H): 4m x 2.4

CLOVER: Capacity: 60

A new small intimate venue, located in the Bristo Square area, perfect for any budding stand-ups.

Stage Size (W x D x H): 4.5m x 2m

DAISY: Capacity: 42

The smaller sister of Clover. Ideal for those bringing their first show to the Fringe.

Stage Size (W x D x H): 3m x 1.2m

UNDERBELLY POTTERROW

TOPSIDE: Capacity: 200

Our newest venue. 200 seats. Black box. End on. Flexible. Large stage. Large storage. Perfect for great theatre.

Stage Size: (W x D x H): 8mx6m

UNDERBELLY'S CIRCUS HUB

Please visit underbellyedinburgh.co.uk or email Stephen@underbelly.co.uk for more details.

Please see the relevant Appendix for further technical specifications and space plan, provided in the pages overleaf, for each of the space.

Should you require further technical specifications please contact the office who will put you in touch with our technical team.

CONTRACTS ETC....

Rental Fee

We will charge you a fee for the rent of the venue and our services which is the higher of either (i) a split of your box office monies; or (ii) a Guarantee. Our split tends to be 40% and will be calculated as a percentage of your gross box office if you are not VAT registered, and as a percentage of your net box office proceeds (ie: the gross less VAT) if you are VAT registered.

Our starting point for calculating the Guarantee is to calculate what our split of your box office proceeds would be if you sold at an average of 40-50% capacity across the Fringe (based on your average ticket price). We will ask you to pay a deposit against your Guarantee before the start of the Festival. Post Festival we will deduct the Rental Fee owing to us from your gross box office proceeds and return the balance to you within 4 weeks of receiving the monies collected by the Fringe Office and other cross-selling venues.

By way of example, if your average ticket price was £10 and you were performing in a 100 capacity space for 24 days (Underbelly's run is 25 days, so allowing for 1 day off), then your maximum box office gross would be £24,000. Based on a box office split to Underbelly of 40%, our Rental Fee would therefore be £9,600. We would then ask you to guarantee 40% of that figure (ie: that you would sell at least 40% of your capacity) which would mean a Guarantee of £3,840 (excluding VAT).

What's included in the Rental Fee?

Underbelly charges as few extras as possible. The Rental Fee described above therefore includes the hire of the venue rental, standard lighting and sound equipment, technical support, marketing support and box office facilities (including advance credit card sales on our website and by telephone). Your Company pass also gives you access where available to other Underbelly shows and generous bar discounts.

Other services are charged in addition. For example, we can provide extra lighting and sound equipment through our nominated lighting/sound company (Stage Electrics). We can also provide extra technical operators and other dedicated staff. Photocopying is charged at 10p per copy (subject to change) and a merchandise charge of 15% will be levied on any

goods sold by you or us from Underbelly. We can also provide a distribution team for your flyering. We charge a Box Office commission on all tickets sold through Underbelly and cross-selling venues of 3% of gross box office.

Other Costs

There is a publicity fee of £500 (subject to change). This covers entry into our venue brochure (shared with the Gilded Balloon, Assembly & Pleasance, partly under the banner of Edinburgh Comedy Festival) and all related distribution in London, Glasgow and Edinburgh. The brochure has a print run of 400,000 of which 200,000 copies will be distributed by the Scotsman and the Scotland on Sunday on one weekend in early June 2012.

VAT

Please note that VAT is chargeable by us on all of our charges and services including the Rental Fee, the brochure entry fee and other extras.

Fringe Office and Performing Rights Fee

The Fringe Office will charge a commission of 4% (plus VAT) on all box office sales that they make on your behalf. (For budgetary purposes, please note that last year, the Fringe Office has sold an average of 36% of all tickets for Underbelly shows).

The Fringe Office will also deduct a Performing Rights Society (PRS) fee for all copyrighted music used. This will now be charged on 100% gross box office sales and the percentage will vary between 1% and 3% of your gross box office depending on usage. All shows at the Fringe are required to fill in a form provided by the venue mid festival and mark down all music used. If your show contains no music or only music which is not under copyright, then it is possible to apply on the form to have the fee waived. Underbelly also purchases a license to cover all background music used for entrances and exits.

Foreign Entertainers Tax

Foreign Entertainers Tax is charged on performers who are not resident in the UK. This tax obliges Underbelly to withhold a percentage of the gross box office receipts if they exceed a certain amount as determined in writing by the FEU to us. You may ask for this tax to be waived or reduced by writing directly to: Foreign Entertainers Unit, St John's House Unit 401, Merton Road, Bootle, Merseyside, L69 9BB. Ideally you should contact them before the Fringe and the Inland Revenue will then write to us with any reduction or waiver of the tax. See www.inlandrevenue.gov.uk for more information

HOW TO APPLY FOR 2016

We are open from 10am to 4am, although most shows will have start times from approximately 11am to 1am. The slot lengths are not fixed and will depend on the length of your show. We only finally schedule our programme when we close for applications and after you have submitted your application, we will discuss with you what time of day and how long your slot should be. Due to the high number of applications we receive it may take some time to reply to your application so please bear with us. If you are being asked to accept offers elsewhere and are yet to hear from us please get in touch to enquire about where we are with regard to your proposal. Slot lengths include your get-in and get-out time and you must always factor this into your planning. The average times given for shows tend to be 10-15 mins get in and 5-10 mins get out.

It is also essential that the rights (if necessary) are available for your show and attained by yourselves.

Once you know what you want to do, then fill in our online application form at <http://www.underbellyedinburgh.co.uk/perform/apply-to-perform>

It would also be helpful if you could send supplementary information such as scripts, company info, DVDs or photographs of previous performances, either by email or post to the addresses below.

The Fringe registration deadline is the 7th April and we will need to be fully programmed by then, so, to avoid disappointment, please make your application as soon as possible.

AND FINALLY...

Underbelly is one of the leading venues at the biggest arts festival in the world. We have one of the strongest reputations for programming and supporting the emergence of the best talent and new writing on the Fringe. Very often we will offer a slot to a show that other, more 'safe' venues disregard. We will always look to programme shows of a high standard that suit the venue and its spaces. This information pack is only an introduction to Underbelly. You will find much more information on our spaces, our history and us on our website, www.underbellyedinburgh.co.uk. Please feel free to contact us should you have any further questions.

Underbelly Limited,
5 Bywell Place, London,
W1T 3DN
enquiries@underbelly.co.uk
Tel: 0207 307 8480

For queries regarding programming contact:
Festival Producer & Programme Manager: Marina Dixon
marina@underbelly.co.uk

Programme Manager & Producer: Vikki Mizon
vikki@underbelly.co.uk

TECH SPECS & SPACE PLANS

BIG BELLY

Large cavernous vault with vaulted and corrugated iron ceiling. End-on raked seating facing a flat stage. Ideal for larger scale theatre, physical work, small circus shows and site-specific performances. Wonderfully atmospheric.

Seating capacity: 60

General Information

Rig Height: 3.5m to underside

Stage size: 6.1 x 6.1m (20' x 20')

2x 13A sockets on stage with a combined power capacity of 16A

Lighting

There will be a six area lighting cover.

Each area to have a warm and a cold light from the front and a neutral back light

Lanterns used in this venue are Cantata 1K Fresnels

There are 2 x 6way patch bays on the rig for patching in company specials

Lighting desk: Zero88 Jester ML48

Patching: Patchable dimmers to allow flexibility for companies

Sound

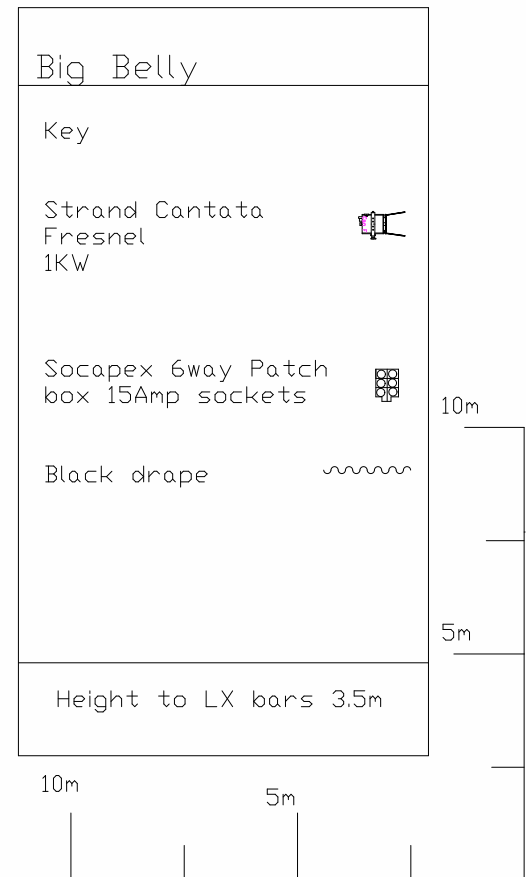
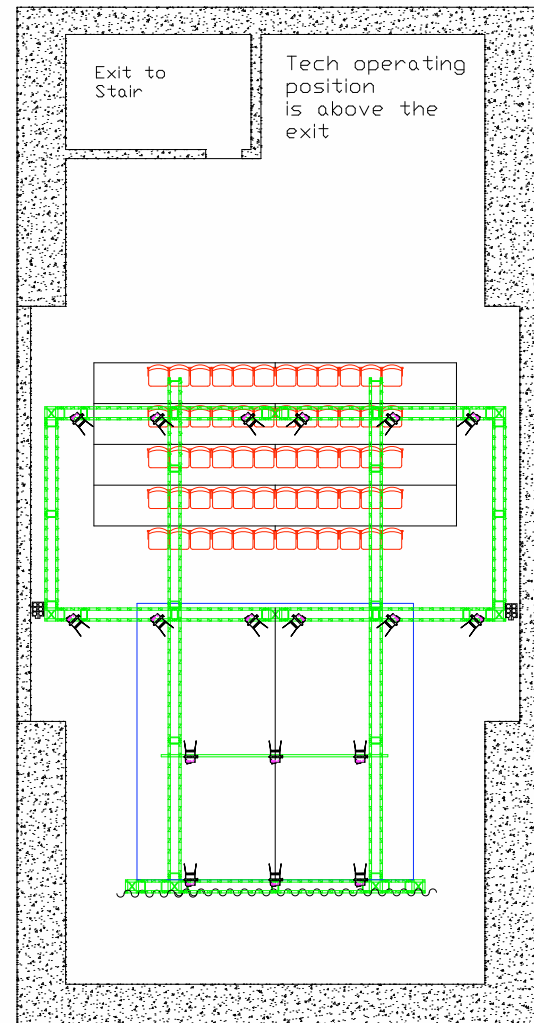
4 x DAS DS12 Speakers

2 x DAS Subs

Soundcraft Spirit 12 channel desk

Mixer Amp

Dual CD Player c/w auto pause



BELLY BUTTON

An intimate, end on space with a flat stage and fully raked seating. The stage provides some wing space and good backstage storage. Suitable for comedy and theatre. The space is also air-conditioned.

Seating Capacity: 123

General Information

Rig Height: 2.8m – 3m Stage Size: 18" x 12"

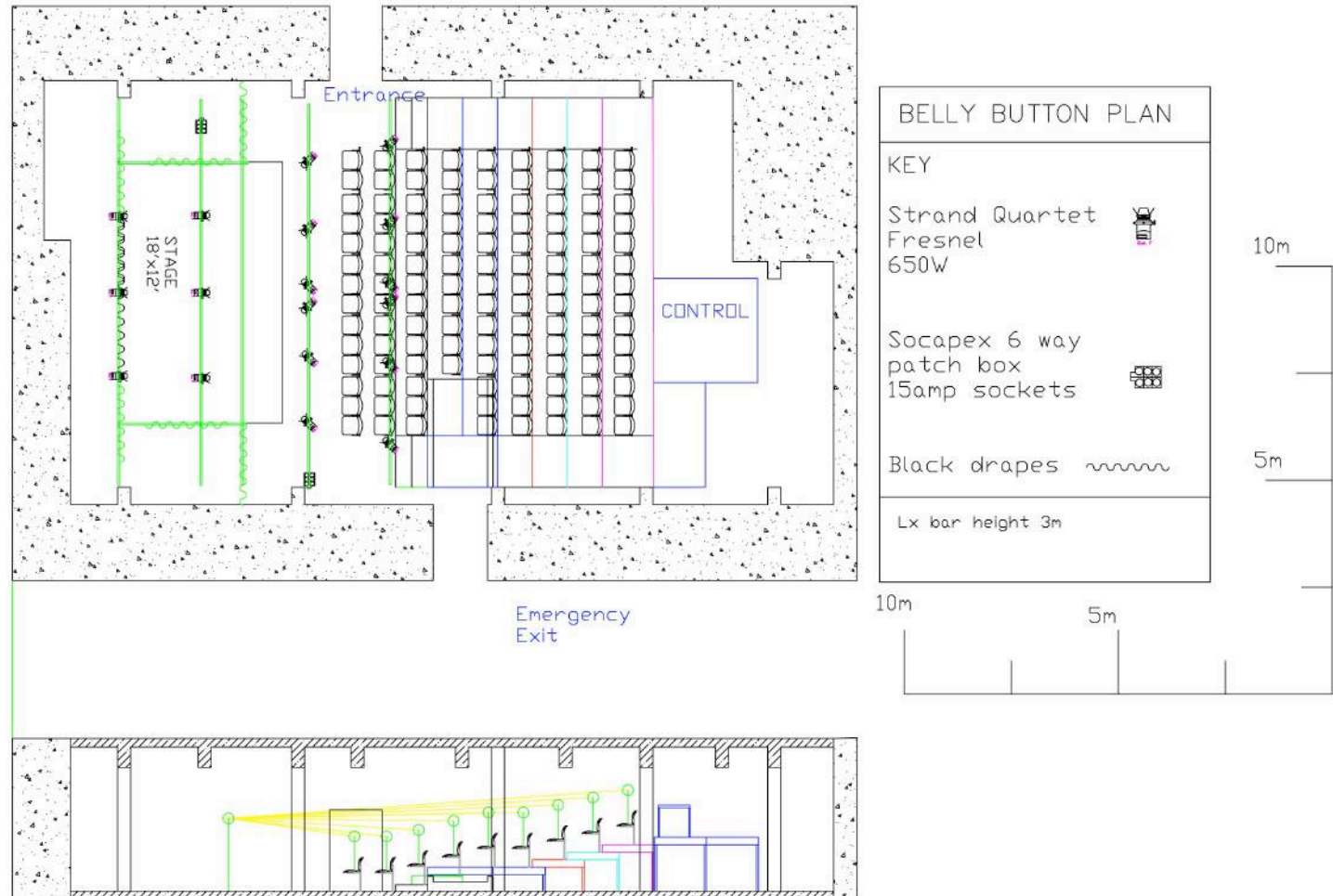
There will be 2 x 13A sockets on stage, with a combined power capacity 16A.

Lighting

There will be a 6 area lighting cover. Each area will have a warm and a cold light from the front and a neutral backlight. Lanterns used in this venue are quartet fresnels. There are 2 x 6 way patch bays on the rig for patching company specials Lighting Desk is a Zero88 Frog.

Sound

2 x DAS DS12 speakers Samson 500 12 channel desk Mixer Amp 2 x SM58 + 2 x boom stands 1 x DI box Dual CD player c/w auto pause



BELLY DANCER

A music and comedy venue at night, an intimate, flexible theater/comedy venue during the day. Seating is flexible on three sides of the small thrust stage. We've had all sorts in here so please call to discuss your ideas. Fully air-conditioned.

Seating capacity: 70 – 180

70 theatre style seating configuration till early evening.
180 seated horseshoe from early evening (with some standing).

Stage Size (W x D x H): 12' x 12' x 1' / 3.6m x 3.6m x 0.3m

General Information

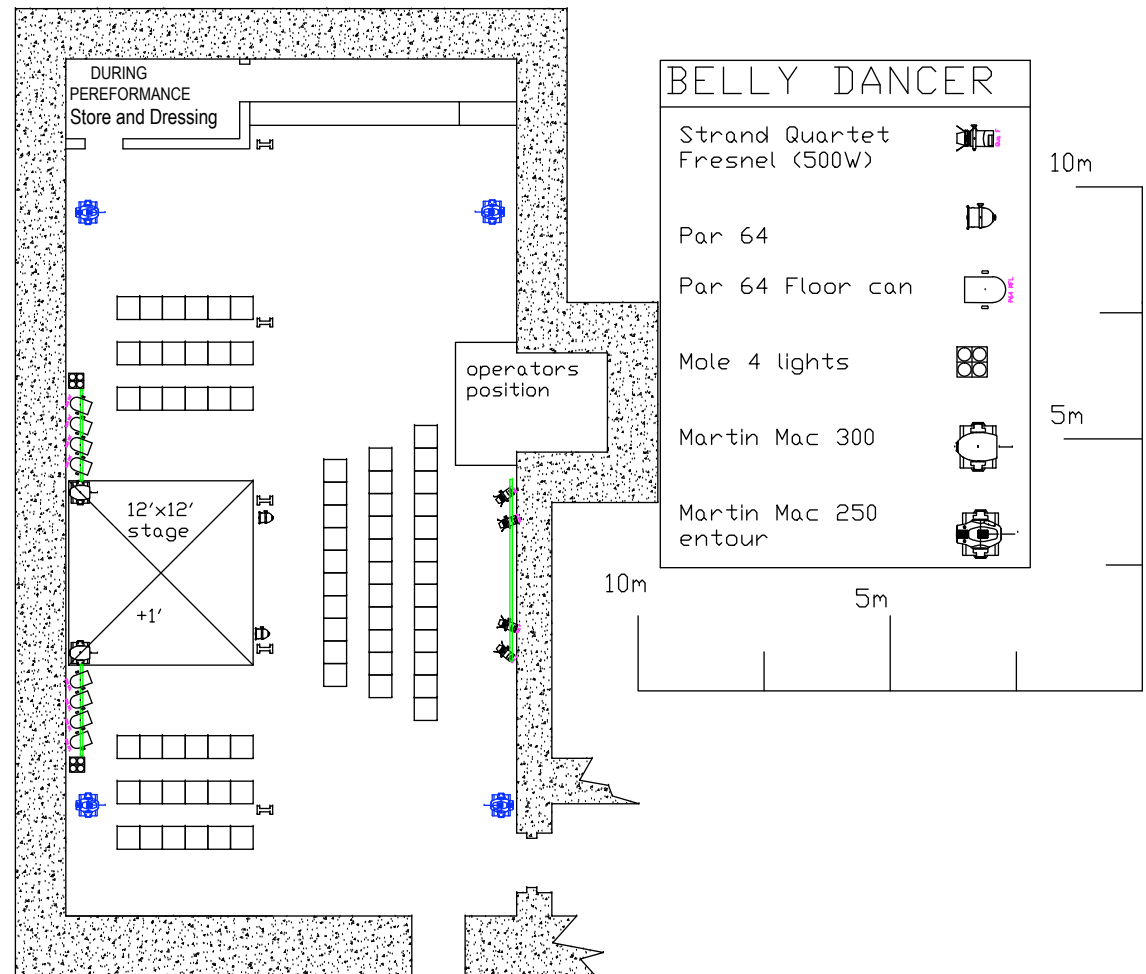
12x 13A sockets on stage with a combined power capacity of 32A

Lighting

There will be adequate lighting to cover the stage area.
In addition there will suitable band and dance floor lighting
There is no facility for company specials in this venue
Lighting desk: Zero 88 Fat Frog

Sound

Yamaha LS9 Mixing desk
Speakers: 2 x D&B Q10 , 2 x D&B Q7 & 4 x Q7 Subs
Monitor speakers
D12 Amplifiers
Dual CD player c/w auto pause
Selection of microphones and DI Boxes



DEHLI BELLY

It's a small, end on studio space with some flat seats and small wings, which suits very small-scale theatre productions and comedy/sketch shows. Intimate and exciting.

Capacity: 60

Stage Size (W x D x H): 4m x 2.5m x 0.3 m

General Information

Rig Height: 2.75m Stage Size: 4m x 2.5m

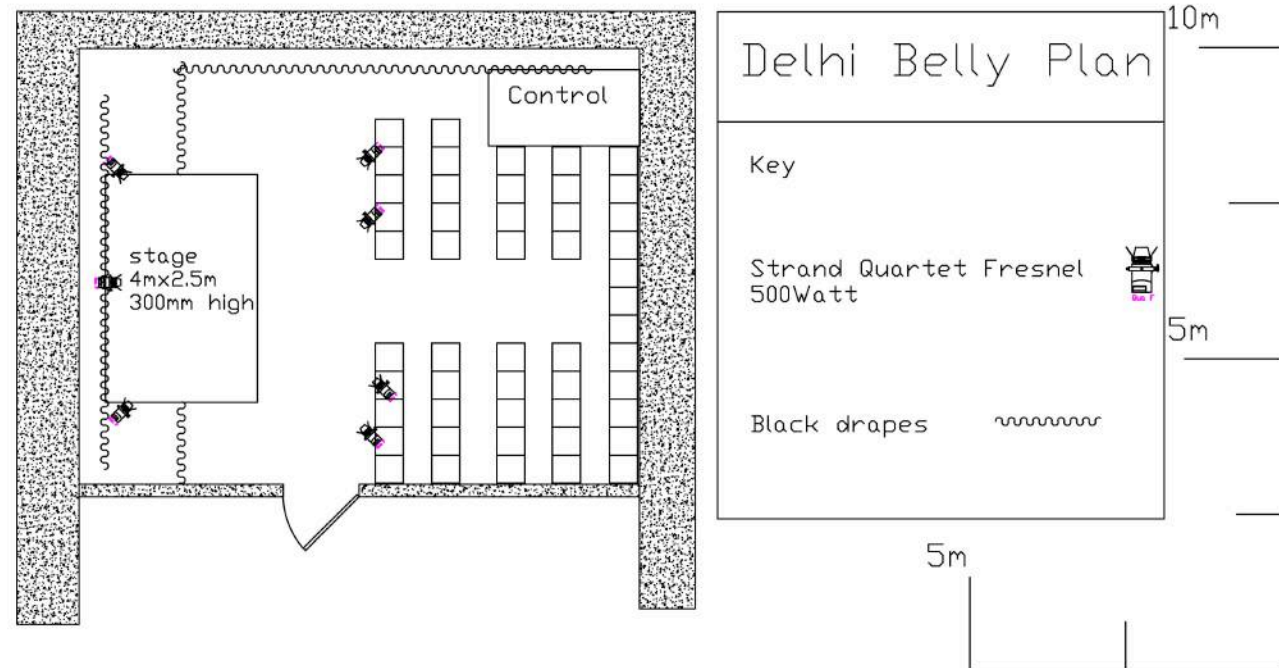
There will be two 13A sockets on stage, with a combined power capacity of 16A.

Lighting

There will be a lighting wash over the stage area. There is no facility for company specials in this venue.

Sound

There will be a Soundcraft M8 mixer, with two D&B E3 speakers, powered by a D&B e-pac. There will also be a Dual CD player, two Shure SM58 Microphones and a DI box available.



IRON BELLY

Wonderfully atmospheric, Iron Belly is a disused bank vault with an arched ceiling and a site-specific feel. End on and partially raked seating and ideal for theatre and small-scale physical theatre.

Seating Capacity: 60

General Information

Rig Height: 2.75m Stage Size: 14' x 12'

There will be two 13A sockets on stage, with a combined power capacity of 16A.

Lighting

There will be a six area lighting cover. Each area will have a warm and a cold light from the front and a neutral backlight. The lanterns used in this venue are quartet fresnels. There are two patch bays on the rig for patching in company specials (see plan).

Lighting Control: Zero 88 Jester

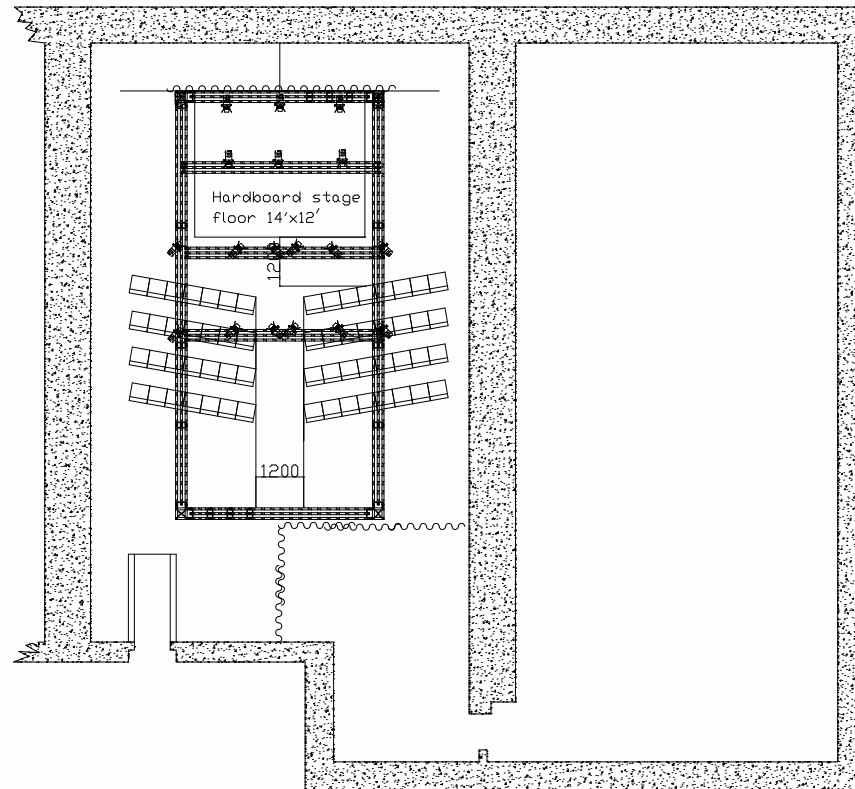
Patching: Iron Belly patching is flexible to provide companies with greater flexibility.

Sound

There will be a Soundcraft M8 mixer, with two Active DAS DS12 speakers.

There will also be a Dual CD player

Please note there are no Mics or DI boxes specified in this venue.



Iron Belly Plan

Key

Strand Quartet Fresnel
500Watt



Socapex 6way patch box
15amp sockets



Black drapes



Height to LX bars 2.75m

10m

5m

10m

5m

BELLY LAUGH

Intimate comedy venue with flat seating wrapped around a centre, semi circular shaped stage. Good access from the dressing room behind stage. Ideal for comedy, sketch and cabaret.

Capacity: 125

Stage Size: 12' at widest point, 8' at deepest point and 1' high

General Information

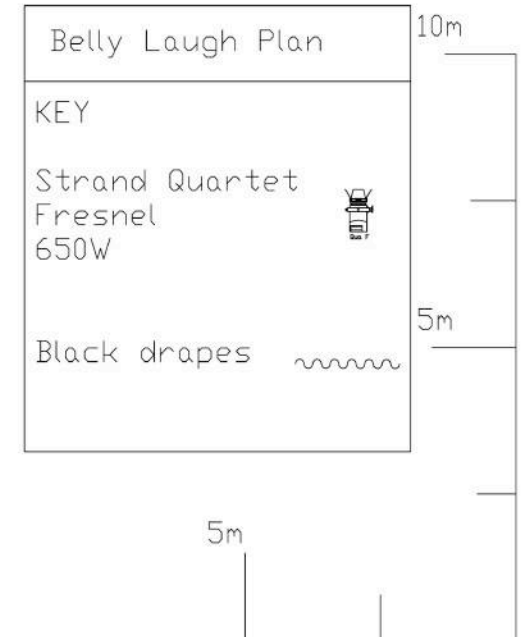
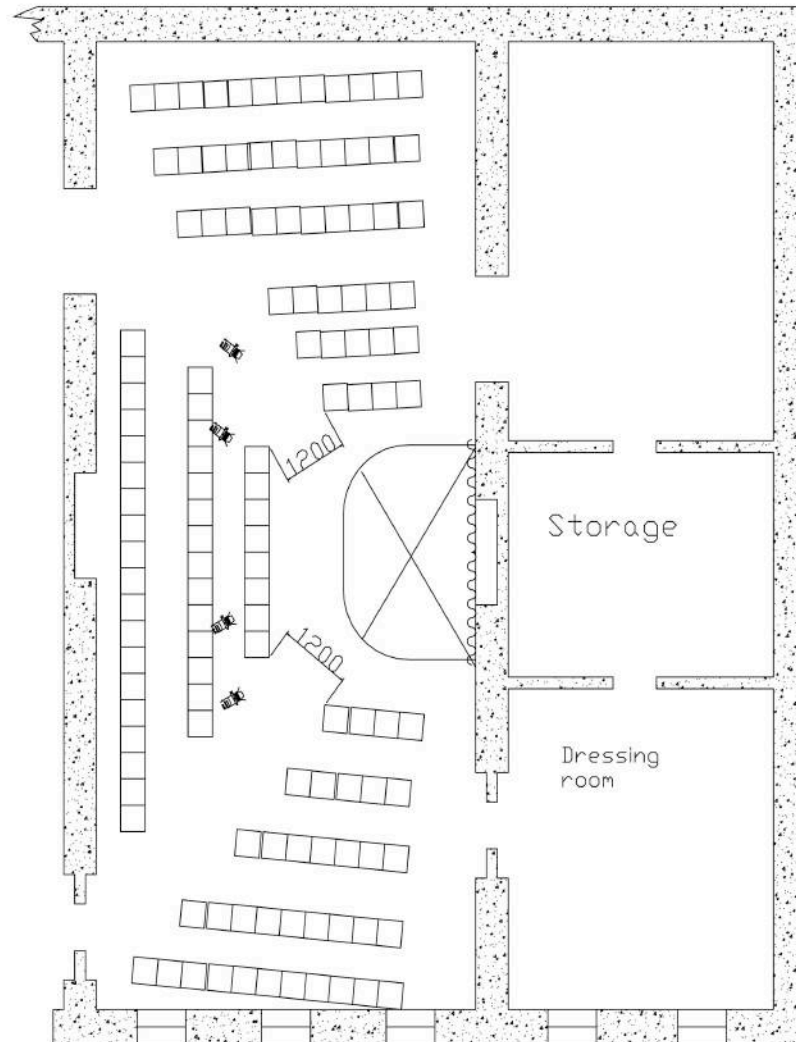
2x 13A sockets on stage with a combined power capacity of 16A

Lighting

There will be adequate lighting to cover the stage area. There is no facility for company specials in this venue.

Sound

Soundcraft M8 Mixing Desk
EAW JF60 Speakers
Dual CD player c/w auto pause
3 Shure SM58 Mics
2 DI boxes.



WHITE BELLY

Ideal for theatre and comedy, White Belly is our largest capacity seated space in Cowgate and offers end on seating with raised stage and partial raked seating. This space is air-conditioned.

Seating Capacity: 150 (increased later in the day to 185)

General Information

Rig Height: 2.8m

Stage Size: 18' x 10'

There will be two 13A sockets on stage, with a combined power capacity of 16A.

Lighting

There will be a warm and cold wash across the stage. There will also be neutral backlighting to the stage. The lanterns used in this venue are minnette fresnels. There are two 6 way patch bays on the rig for patching in company specials (see plan).
Lighting Control: Zero 88 Jester

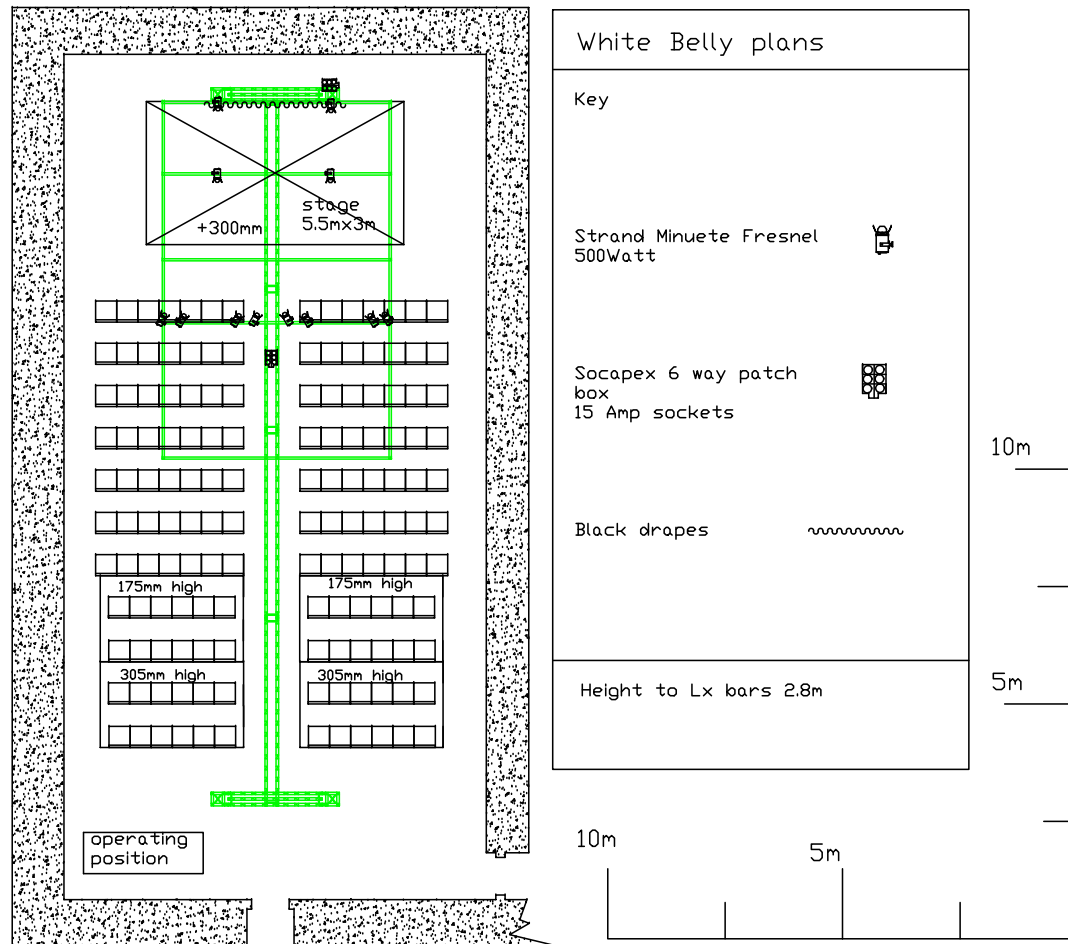
Patching

White Belly patching is flexible to provide companies with greater flexibility.

Sound

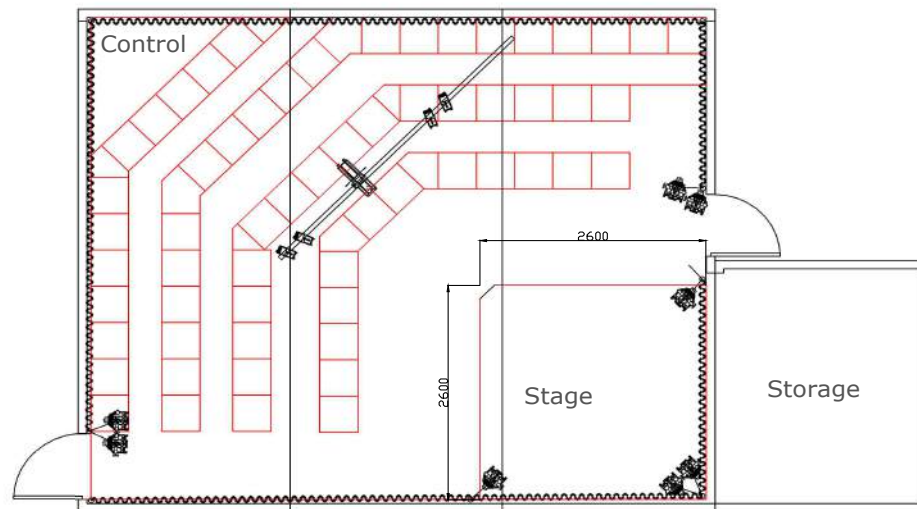
There will be a Soundcraft LX7 (or similar) mixing desk, with four D&B E3 speakers, powered by a D&B E-pac.

There will also be a Dual CD player and two Shure SM58 Microphones and two DI Boxes available.

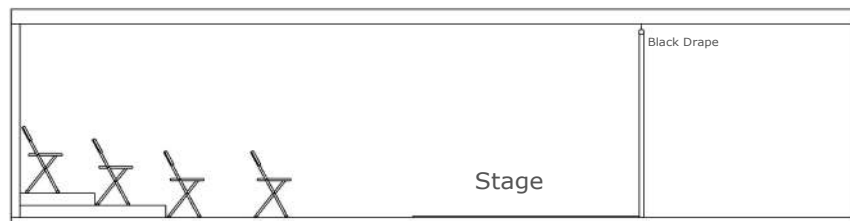


THE WEE COO

Seating Capacity: 60



Plan



Elevation

TECHNICAL SPECIFICATION:

P.A.

2x D&B E8 either side of the stage
1x 8 Channel Soundcraft mixer
2x SM58 Mics
2x D.I. boxes
1x CD Player
1x ipod Cable.

Stage Power:

1x Twin 13Amp sockets with a combined power output of 16Amps.

Lighting:

There will be a general wash comprising of warm and cold front light and neutral back light.

KEY:

Selecon Acclaim Fresnel



Selecon Acclaim Profile



Source4 PAR



UNDERBELLY

1st Floor - Victoria Chambers - 16-18 Strutton Ground - London, SW1P 2HP
Tel 0207 222 3311 - Fax 0207 222 3319 - Web www.underbelly.co.uk

Drawing Title:
WEE COO PLAN AND ELEVATIONS

Drawing Number:
UB/EDIN 11 220

Drawing Scale:
1:50 @ A3

Drawing Date:
29/05/11

CLOVER

Seating Capacity: 60

A new small intimate venue, located in the Bristo Square area, perfect for any budding stand-ups.

Stage Size (W x D x H): 4.5m x 2m

P.A.

2 X D&B E8 either side of stage
1 x 8 channel soundcraft mixer
2 x SM58 Mics
2 x DJ boxes
1 x CD player
1 x ipod cable

Stage Power

1 x Twin 13Amp sockets with power output o 16Amps.

Lighting:

There will be a general wash comprising of warm and cold front light



DAISY

Seating Capacity: 42

A new small intimate venue, located in the Bristo Square area, perfect for any budding stand-ups.

Stage Size (W x D x H): 4.5m x 2m

P.A.

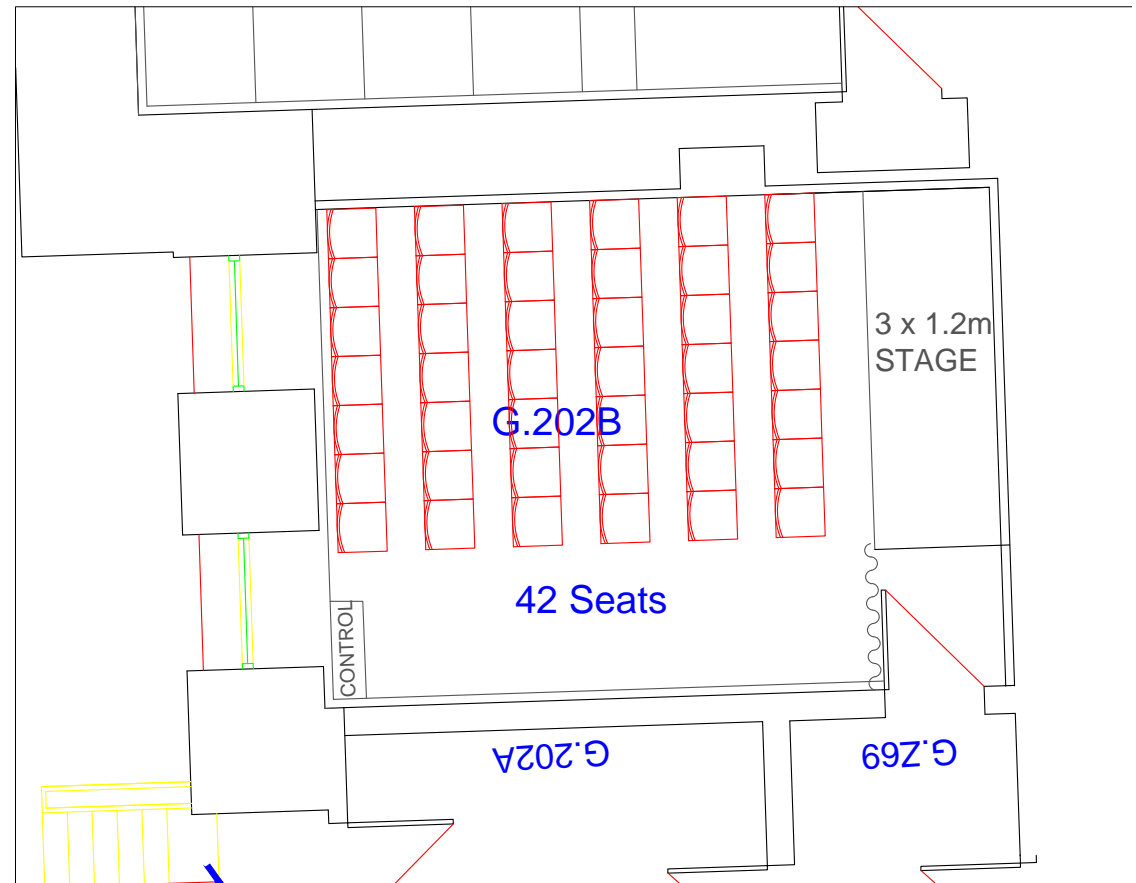
- 2 X D&B E8 either side of stage
- 1 x 8 channel soundcraft mixer
- 2 x SM58 Mics
- 2 x DJ boxes
- 1 x CD player
- 1 x ipod cable

Stage Power

1 x Twin 13Amp sockets with power output o 16Amps.

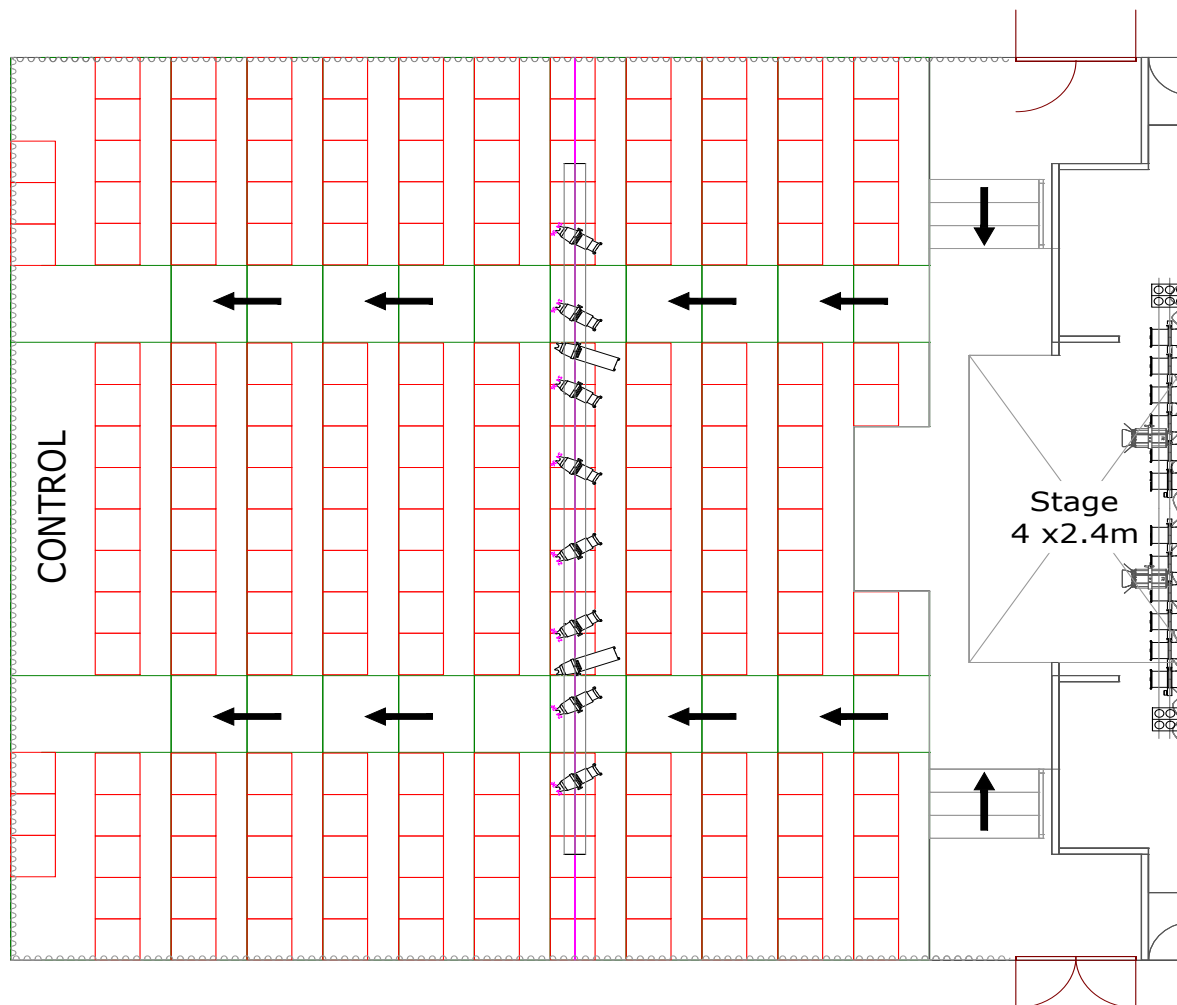
Lighting:

There will be a general wash comprising of warm and cold front light



ERMINTRUDE

Seating capacity: 200



TECHNICAL SPECIFICATION:

P.A.

2x D&B T10s and 1x Q Sub either side of the stage
1x 12 Channel Soundcraft mixer
2x SM58 Mics
2x D.I. boxes
1x CD Player
1x iPod Cable.

Stage Power:

1x Twin 13Amp sockets with a combined power output of 16Amps.

Lighting:

There will be a general wash comprising of warm and cold front light and neutral back light.
There will be capacity for company specials with two 6ch patch bays.

KEY:

Selecon 1.2K Fresnel



Source4, 36



Source4, 15-30



PAR 64



6 Channel Patch bay



UNDERBELLY

5 Bywell Place - London, W11 3DH
Tel: 0207 307 8480 - Fax: 0207 307 8481 - Web: www.underbelly.co.uk

Drawing Title:
PLAN FOR "ERMINTRUDE"

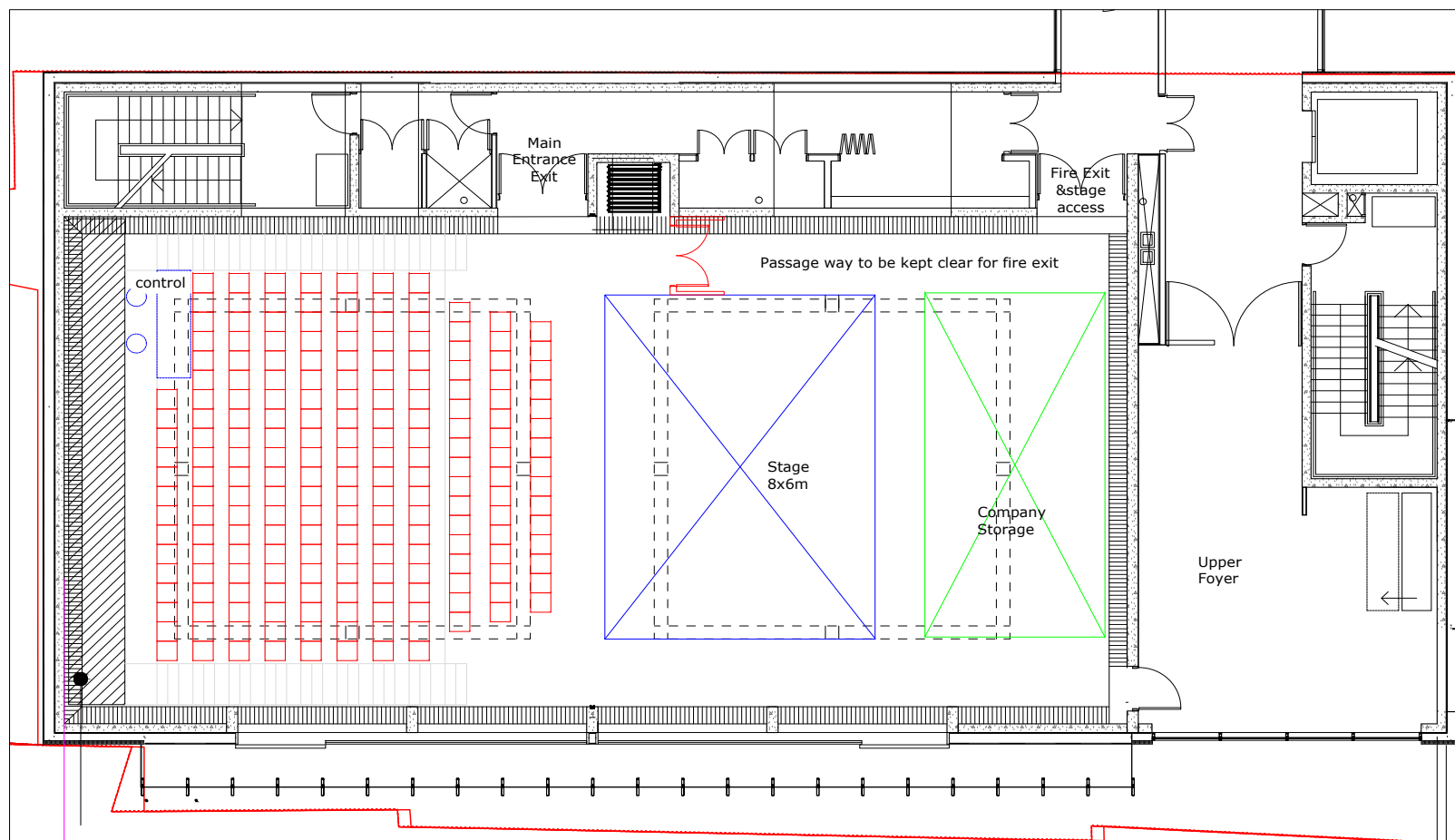
Drawing Number:
UB/Edin 11 910

Drawing Date:
02/02/2012

Drawing Scale:
1:50 @ A3

TOPSIDE

Capacity: 200



UNDERBELLY

5 Bywell Place - London - W1T 3D4
Tel: 0207 307 8480 - Fax: 0207 3078481 - Web: www.underbelly.co.uk

Drawing Title:
First Draught of TOPSIDE Plan.

Drawing Revised:

Drawing Number:

Drawing Scale:

NTS

Drawing Date:

07/02/2013

Specifications:

UDDERBELLY

Seating capacity: 410

Stage Lighting

Cantata 1.2K Fresnel (General Cover)
Source 4 15/30 Zoom 750W (Specials)
VL 1000 Tungsten

Effect Lighting

Martin Mac 700 Spot
Martin Mac 600 Wash

Dimming and Control

Avolites Pearl
Patchable dimmers to allow flexibility for companies

F.O.H Sound

D&B Q7
D&B Q Sub
D&B D12 amplifiers

Monitor sound

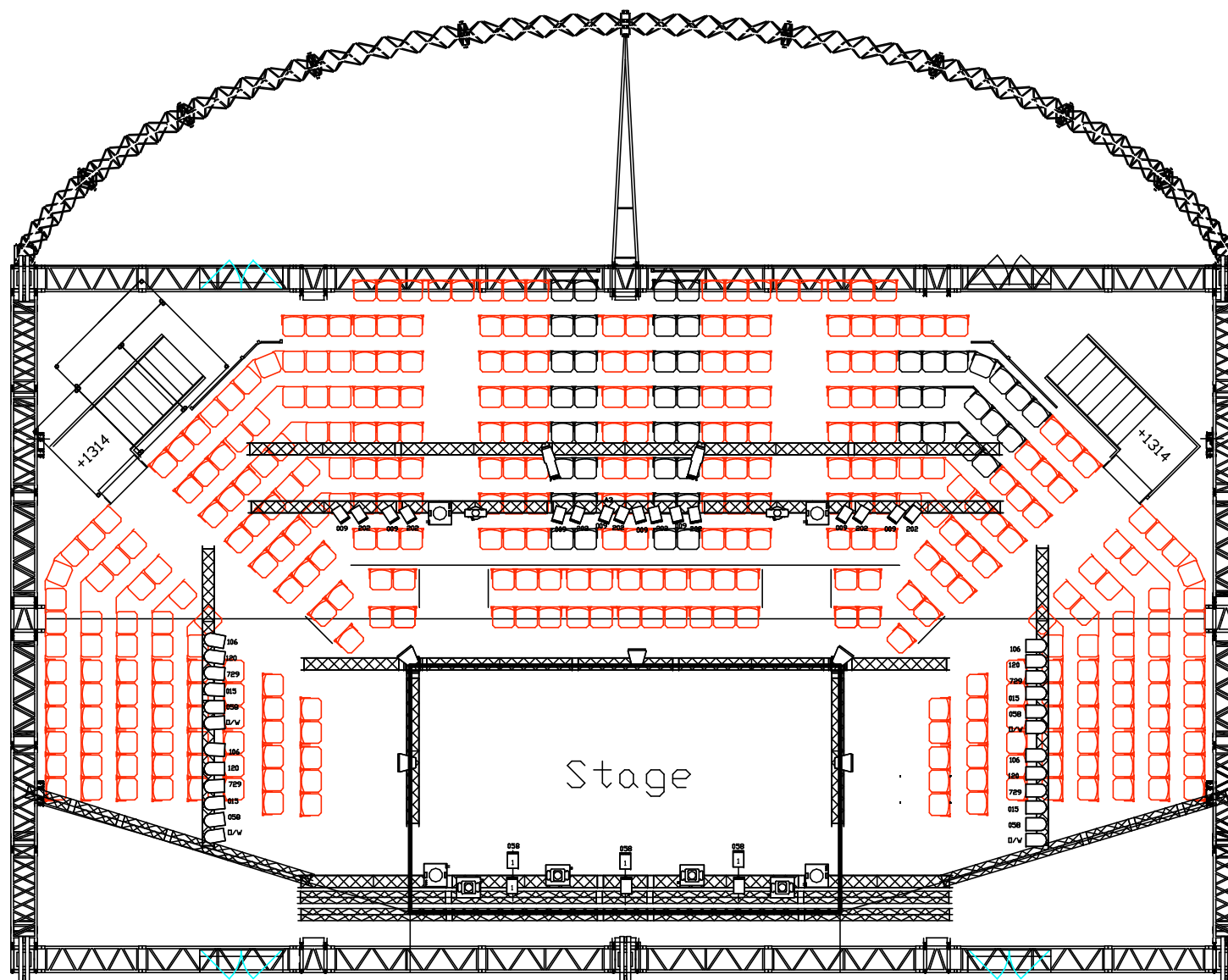
L'Acoustics Monitors
Amplifiers to suit

F.O.H Control





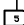


Yamaha M7CL 32ch Digital mixer
CD player c/w Auto pause
MD player c/w Auto pause
Laptop cable

Selection of Mics and DI boxes including 4 radio mics

(PLEASE NOTE THE ABOVE MAY BE SUBJECT TO CHANGE, CONTACT OFFICE FOR MORE DETAILS)



Key

-  1.2k Fresnel
-  Mac 600
-  Mac 700 Profile
-  Source 4 Zoom
-  Par 64 Parcan
-  D&B Q7
-  VL 1000 T

Drawn by David Watson
 Udderbelly Edinburgh 2010
 Last Revised 2/06/2010