



# Giesen WPG1 / WPE1 Sample Roaster

The WPG1/WPE1 Sample Roaster enables you to find the exact roast of your choice. You may have a roast in mind, taste it in your mouth, but now want to make it come to life.

Designed with three trays on the frontside, the WPG1 makes it possible to experiment, test and compare three different batches side by side.

This compact model has a capacity of 50 – 200 gr. per batch combined with complete professional roasting functionalities.

# Specifications



## Capacity

50 gram - 200 gram



## Power

230 V - 50/60 Hz



## Gas (WPG1)

Natural and Propane



## Heating (WPE1)

Electrical heating



## Exhaust

Ø 80 mm



## Weight

85 kg



## Certificates

CE

It is possible to influence the entire roasting process by controlling the drumspeed, airspeed and temperature. The WPG1 Sample Roaster can roast on an accuracy of 1%, controllable modularly in 100 steps.

It comes with the special feature of a built-in infrared sensor, making measurements of the bean temperature extremely accurate.

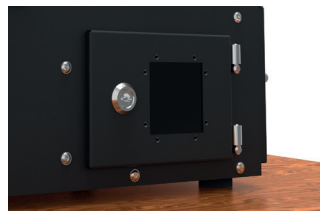
# Coffee Roaster WPE1 / WPG1



Built-in infrared sensor for bean temperature.



Three cooling trays for three different samples.



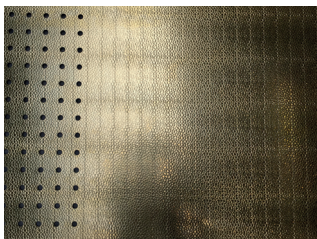
Internal roast cyclone.



Adjustable touchscreen for the perfect viewing angle.

- Adjustable burner by 1% steps
- Adjustable temperature
- Adjustable drumspeed
- Adjustable airflow
- Internal cyclone
- Optional: Profile Roasting

# Options



Brass hammerd roof



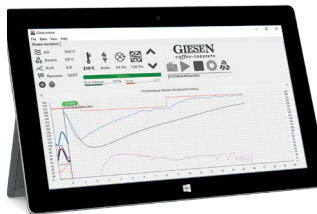
Desired NCS/RAL Color



Temperature sensor  
Double read-out



Roast profile system  
Laptop



Roast profile system  
Tablet



Optional: Presentation Table

