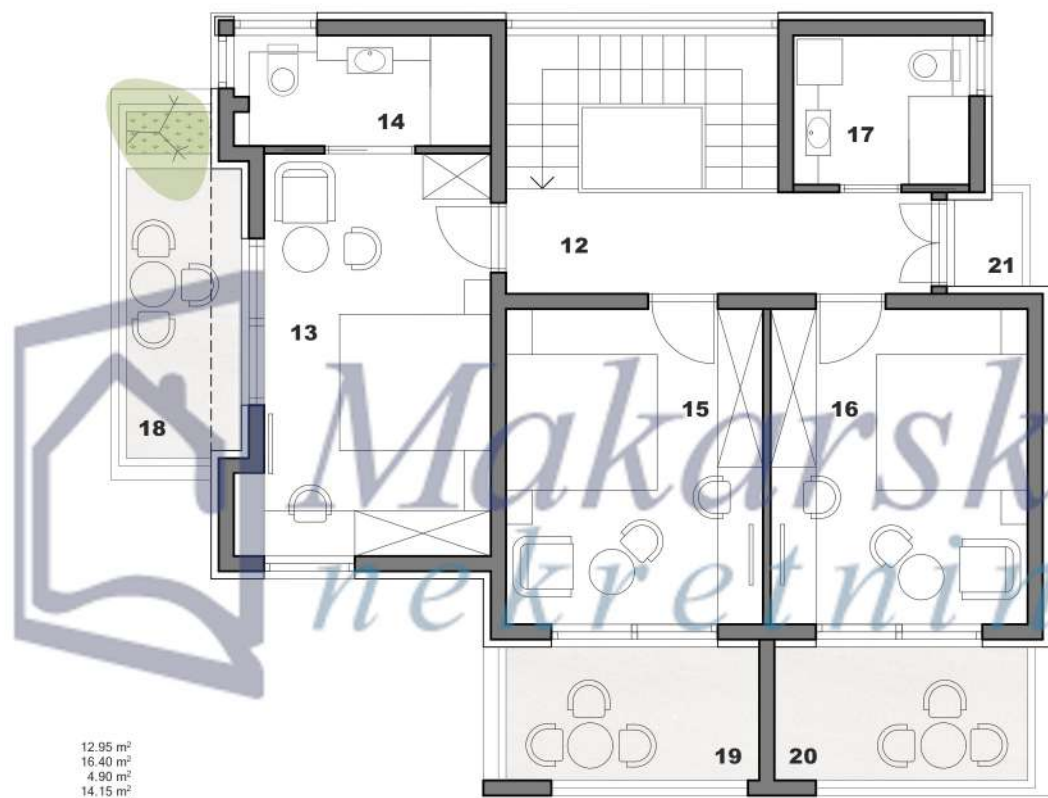


1	natkriveni predulaz	4.25 m ²
2	ulazni prostor	20.15 m ²
3	kuhinja	14.65 m ²
4	dnevni boravak i blagovaonica	26.65 m ²
5	kupaonica	4.60 m ²
6	spremište	1.60 m ²
7	strojarica bazena	1.50 m ²
8	natkrivena terasa (x2)	19.20 m ²
9	vrt s bazenom	287.30 m ²
10	2 parkirna mjesta	31.70 m ²

stambena zgrada VB 1
tlocrt prizemlja 1:50



12	hodnik	12.95 m ²
13	soba 1	16.40 m ²
14	kupaonica 1	4.90 m ²
15	soba 2	14.15 m ²
16	soba 3	14.15 m ²
17	kupaonica	4.60 m ²
18	loda 1	5.75 m ²
19	loda 2	5.90 m ²
20	loda 3	5.90 m ²
21	loda/balkon	1.05 m ²