

INSTALLATION AND USER MANUAL FOR PVR



* PVR: Personal Video Recorder

CANALSAT
AUSTRALIE

With the new PVR, you will now be able to record with an optimal quality all the programs broadcast in Simple Definition (SD) or in High Definition (HD)⁽¹⁾.

1	INSTALLATION & CONNECTION	P. 4
	INSTALLING YOUR HARD DRIVE	P. 4
	CONNECTING/DISCONNECTING YOUR HARD DRIVE	P. 5
2	HARD DRIVE UTILISATION	
	CONTROLLING LIVE PROGRAMS	P. 6
	RECORDING PROGRAMS	P. 7
	CHECKING AND MODIFYING RECORDINGS	P. 11
	VIEWING RECORDINGS	P. 12

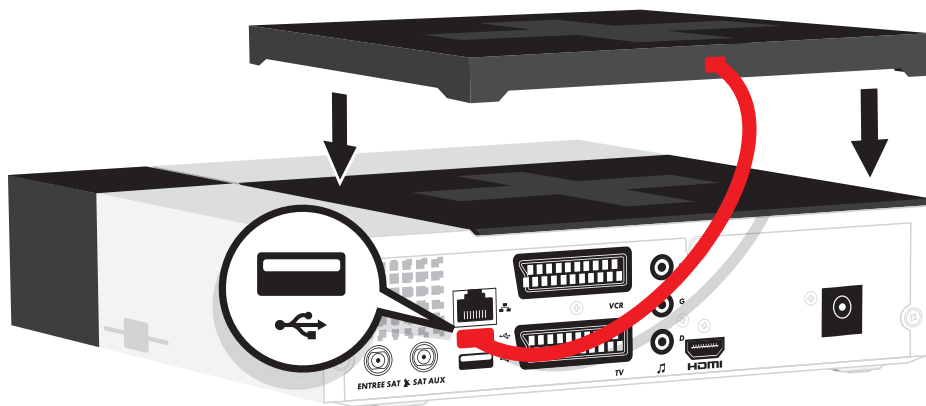
⁽¹⁾ If you have the appropriate option.

1 INSTALLATION & CONNECTION OF YOUR EXTERNAL HARD DRIVE

The hard drive must only be used with the decoder +LE CUBE.
All other data will be erased when you first record a program on your hard drive.
Its content will only be read by the decoder afterwards.

→ INSTALLATION

The hard drive is powered via USB and must be connected to the decoder once the decoder has been installed.
Connect the USB interface cable of your hard drive to the USB port of your decoder.



→ CONNECTION AND DISCONNECTION

You can connect or disconnect your hard drive whenever you want.
To disconnect, it is essential that you follow the procedure described on the welcome screen of the hard drive (MENU/MY RECORDINGS/DISCONNECTING).

→ CONNECTION



→ DISCONNECTION



Re-connect to your hard drive at any time. The hard drive must be connected for recording.

NOTE

Important: The use of this disc with a computer will lead to the loss of the recorded datas.

* Photo may differ.

2 UTILISATION OF YOUR EXTERNAL HARD DRIVE

➔ CONTROLLING LIVE PROGRAMS

➔ IN BRIEF



*

This feature allows you to:

- Pause⁽¹⁾ a program and resume it where you paused it.
- Return to a scene or an action, replay it in slow motion and manage the frame rate.

➔ IN DETAILS



*

- Press the **||** button to pause a program.
- Press the **▶** button to resume the program in time shift.
- Press the buttons **◀◀** or **▶▶** to rewind or fast forward.
- Press the **■** button to return in live mode.

➔ + MORE

- Pause your programs for up to two hours⁽¹⁾.
- When playing a program in time shift, you can choose at any time the version you want using the **+** button (French, Original Version, version for hearing impaired) and the picture format you want using the button **ZOOM**.

- For more information on the slow motion and frame rate features go to page 13.

(1) A program may be PAUSED for up to two hours and REWOUND depending on the duration of the program already played, up to two hours for the current program. After two hours of pause, the decoder automatically starts to play in a two-hour time-shift.

* Photo may differ.

➔ RECORDING YOUR FAVOURITE PROGRAMS

Your external hard drive allows you to easily record your favourite programs. You can watch a channel whilst your decoder records another. You have several options when you record a program.

➔ REAL TIME RECORDING

➔ IN BRIEF



*

You can record a program in real time and store it to watch it later. This way, you can create a real video collection.

➔ IN DETAILS



*

- Press the **●** button to start recording the current broadcast program. The recording will automatically stop at the end of the program.
- You have the freedom to watch another channel.

➔ + MORE

Ten minute security margins are placed by default so that you never miss the beginning or the end of your programs. To modify these security margins, go to page 10, section RECORDING PARAMETERS.

* Photo may differ.

➔ PROGRAMING YOUR RECORDINGS

➔ IN BRIEF

Program easily the recording of a program using the **PILOTE**, the **REBROADCASTING LIST**, the **PROGRAM GUIDE** or using the **MENU** button on your remote control, section MY RECORDINGS (menu RECORDING).

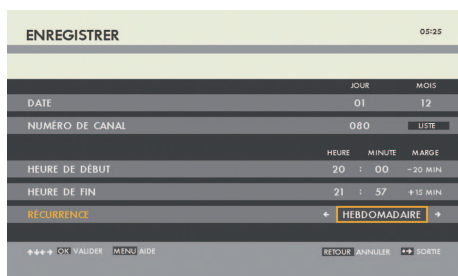
IN DETAILS



You have four options:

- Using the PROGRAM GUIDE
- Using the PILOTE
- Using the REBROADCASTING LIST
- Using the RECORDING function

➔ + MORE



■ To make sure you don't miss any episode of your favourite TV program, just adjust the settings in **MY PROGRAMMED RECORDINGS** for the frequency of your recordings (daily, weekly...)

- Select using the button **MENU** the section **MY RECORDINGS**, then **MY PROGRAMMED RECORDINGS**.
- Select the program you wish to record and press the button **1** then select the last line to modify the frequency of this program. For more information, go to page 11, section CHECKING AND MODIFYING YOUR RECORDINGS.

* Photo may differ.

➔ USING THE GUIDE

Press the button **MENU** on your remote and select the menu **PROGRAM GUIDE**. Select your program from the section **NOW, THIS WEEK** or search by criteria. Once you have selected your program, validate by pressing the button **OK**.



➔ USING THE PILOTE

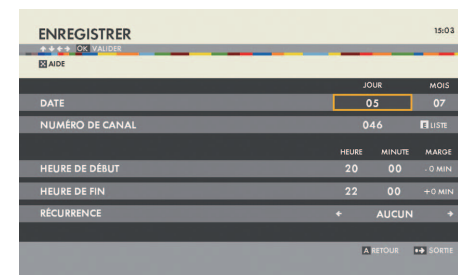
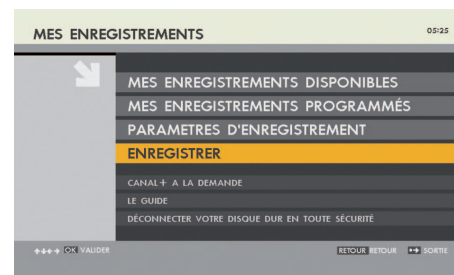
Press the button **PILOTE** on your remote to obtain the information about the current program. Select your program⁽¹⁾ using the buttons **←/→//↓** located around the button **OK** and validate by pressing on **REDACT**.

➔ USING THE REBROADCASTING LIST

From the PILOTE, press twice on the button **PILOTE** of your remote to access the rebroadcasts. Select amongst the dates of rebroadcasts proposed, the date for which you wish to program the recording and validate by pressing on **OK**.

➔ USING THE RECORDING FUNCTION

Press the button **MENU** on your remote and select the menu **MY RECORDINGS**. You can now record a channel on a date and at a time of your choice.



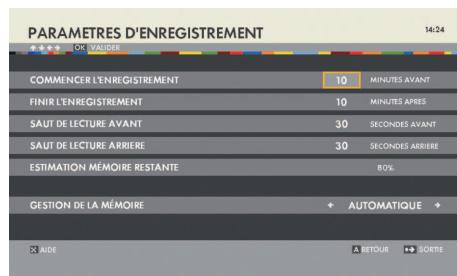
Beware that all the recordings of this type will be named «MANUAL-...»

⁽¹⁾ Channel of choice, current or next program.

→ ENTRY OF THE PARENTAL CODE

When programming some recordings, you are asked to provide a Parental Code. For some programs, you must enter the 4 digits of your Parental Code to be able to record your program of choice. It will then appear in the locked recordings in the section **MY AVAILABLE RECORDINGS** (See page 12). Should you fail to enter the Parental Code when the program is locked, you will only record a black screen.

→ RECORDING PARAMETERS



The security margins are set at 10 minutes by default to anticipate the delays in broadcasting.

In this section, you can modify:

- The security margins of your recording
- The amount of time skipped backwards or forwards.
- The memory management mode for your external hard drive.

To modify the security margins and/or the amount of time skipped backwards/forwards, select the desired section and enter the relevant information using the numbers on the remote.

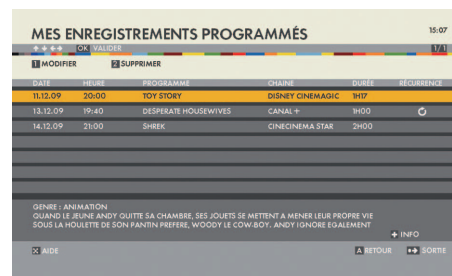
- Security margins: **START THE RECORDING** and/or **END THE RECORDING**. These security margins will apply to all your future recordings.
- Skipping: **FORWARD SKIPPING** and/or **BACKWARD SKIPPING**.

To modify the memory management mode, select the mode your desire:

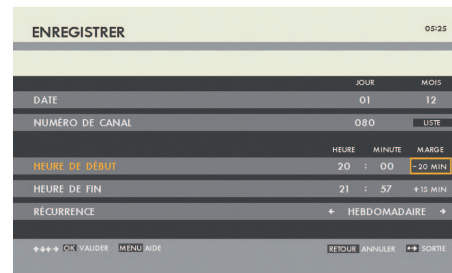
- **AUTOMATIC:** When the estimation of the remaining memory is not sufficient for the next recording, the oldest recording on your hard drive is automatically erased.
- **MANUAL:** The decoder informs you that the memory on the hard drive is insufficient for this programming and invites you to erase some of your programs.

→ CHECKING AND MODIFYING YOUR RECORDINGS

→ THROUGH MY PROGRAMMED RECORDINGS



The section **MY PROGRAMMED RECORDINGS** lists your programmed recordings and allows you to delete or modify your recording options. You can access this section from the menu **MY RECORDINGS**, which can be accessed using the **MENU** button on your remote.



In this section, you can modify the programming of the recording of each of your programs. Go to the desired program and press on the button **1** you can now:

- Modify only the security margins of a specific recording.
- Program the recording of a program over several weeks by modifying the frequency.
- Program the recording of several sequential programs by modifying the end time of your initial program.

➔ VIEWING YOUR RECORDINGS



* All your recordings are available in the section **MY AVAILABLE RECORDINGS** of the **MY RECORDINGS** menu, which can be accessed using the button **MENU** on your remote. Select the program you wish to view and validate by pressing the button **+** or **1**.



To view the recordings after entering the Parental Code, select **SEE THE LOCKED CONTENTS** by pressing the **2 ABC** button on your remote control.

TIP

If you cannot find the recordings you want in the list of available recordings:
1/Check that they are not hidden by a parental code by pressing the **2 ABC** button from the list of available recordings.
2/Check that the country you are locating in has been populated. To this end, click on the button **MENU** of your remote control, select the menu **CUSTOMISING MY TV**, then the section **SETTING MY DECODER** and finally **SELECTING THE GEOGRAPHICAL ZONE**.

NOTE

A program being recorded will be displayed first in the list with the note **CURRENT RECORDING**. You do not need to wait for the digital decoder to finish the recording! You can watch it at any time from the beginning, just like any other recording. The digital decoder will continue to record normally while you are watching it.

* Photo may differ.

➔ USING THE BUTTONS **◀** AND **▶** ON YOUR REMOTE

* The buttons **◀** & **▶** allow you to move forward or rewind at the speed of your choice.
■ A short pressure on **◀** will result in a skip backwards of 8 seconds.
■ A short pressure on **▶** will result in a skip forwards of 30 seconds. These parameters can be set in **RECORDING PARAMETERS**.

- A pressure and hold will multiply the frame rate.
- Several consecutive pressures on the same button will increase the speed of rewinding or moving fast forward (x4, x8, x32, x64...).

➔ REPLAYING AN ACTION IN SLOW MOTION



*
■ Two successive pressures on the **II** button will activate the slow motion mode.
■ Three successive pressures on the **II** button will activate the image by image mode.
■ Press the **▶** button to return to the normal viewing mode.



➔ INFORMATION ABOUT THE RECORDED PROGRAM



* You can get some information about the recording you are viewing at any time; see the summary, the available languages and subtitles. For that, simply press the **PILOTE** button.

* Photo may differ.

➔ + MORE

- You can stop the viewing of your program at any time by pressing on . A full viewing will then be counted (3 viewings authorised for each program).
- For more information about the program from the welcome page or during the viewing, press the button  to obtain HELP for this service.
- For reasons out of our control, you may not be able to enjoy systematically all the proposed programs.

NOTE

A newly installed hard drive cannot have any content.
You will enjoy a selection of programs
within two days at the latest.

YOUR PARENTAL CODE

**IF YOU FORGET YOUR PARENTAL CODE, YOU CAN RESET IT BY
CONTACTING THE CUSTOMER SERVICE.**

YOUR CLIENT NUMBER

YOUR CLIENT NUMBER

USEFUL CONTACTS

WEBSITE

www.canalsat-australie.com

CALL CENTER

1300 131 224

E-MAIL

abonnement@canalsat-australie.com

CANALSAT AUSTRALIE

LBF AUSTRALIA PTY LTD

ABN 058 098 707 021

SUITE 3 GLOUCESTER WALK

88 CUMBERLAND STREET

THE ROCKS NSW 2000

CANALSAT
AUSTRALIE