



Australian Government

BUILDING OUR FUTURE

Infrastructure Investment Program

Flynn Drive Upgrade, Neerabup

Western Australia

Australian Government funding: \$2.5 million

Western Australian Government contribution: \$20.0 million

Total: \$22.5 million

Project description

The project will undertake road improvement upgrades to Flynn Drive, including:

- improvements to the single carriageway and alignment from Travertine Vista to Tranquil Drive
- upgrades to the dual carriageway from Tranquil Drive to Pinjar Road
- upgrades to the rural grade section of Flynn Drive between Pinjar Road and Old Yanchep Road.

Jobs supported

- This project is expected to support 40 direct and indirect jobs based on Australian Government estimates

Project benefits

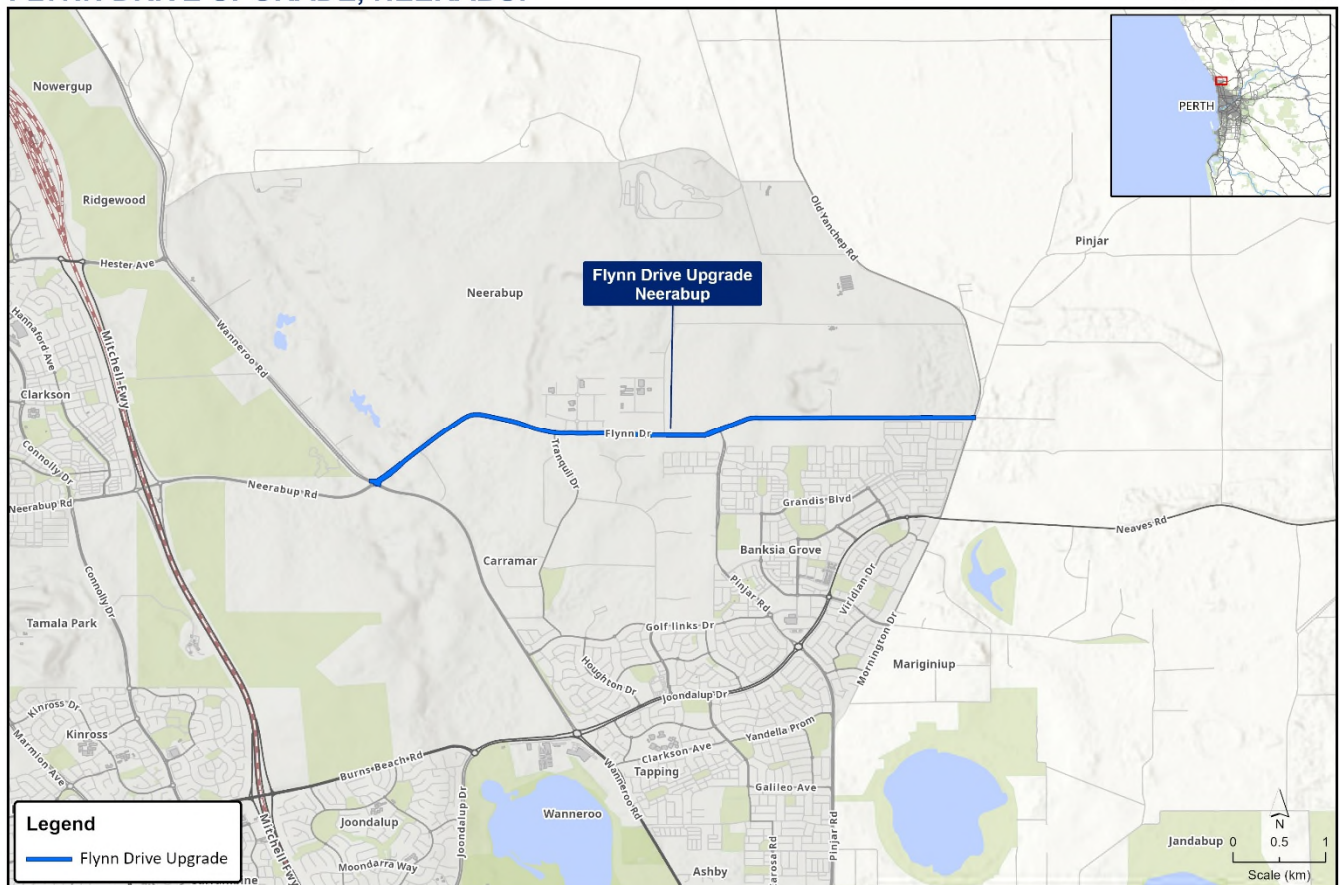
- Improved accessibility and connectivity of road networks
- Improved road safety for all road users

Project timelines

- This project is expected to start construction in early 2022 and be finished construction by early 2023

INFRASTRUCTURE INVESTMENT PROGRAM FLYNN DRIVE UPGRADE, NEERABUP

Australian Government
Department of Infrastructure, Transport,
Regional Development and Communication





Australian Government

Infrastructure Investment Program

BUILDING OUR FUTURE

Great Eastern Highway Upgrades - Coates Gully, Walgoolan to Southern Cross and Ghooli to Benari
Western Australia

Australian Government funding: \$200.0 million

Western Australian Government contribution: \$50.0 million

Total: \$250.0 million

Project description

The project involves upgrading the Great Eastern Highway at the following locations: Coates Gully, Walgoolan to Southern Cross, and Ghooli to Benari. The upgrade works may involve realignment, widening, bridge replacement or improvement, passing lanes, intersection improvements, rest areas and improvements to drainage.

Jobs supported

- This project is expected to support 450 direct and indirect jobs based on Australian Government estimates

Project benefits

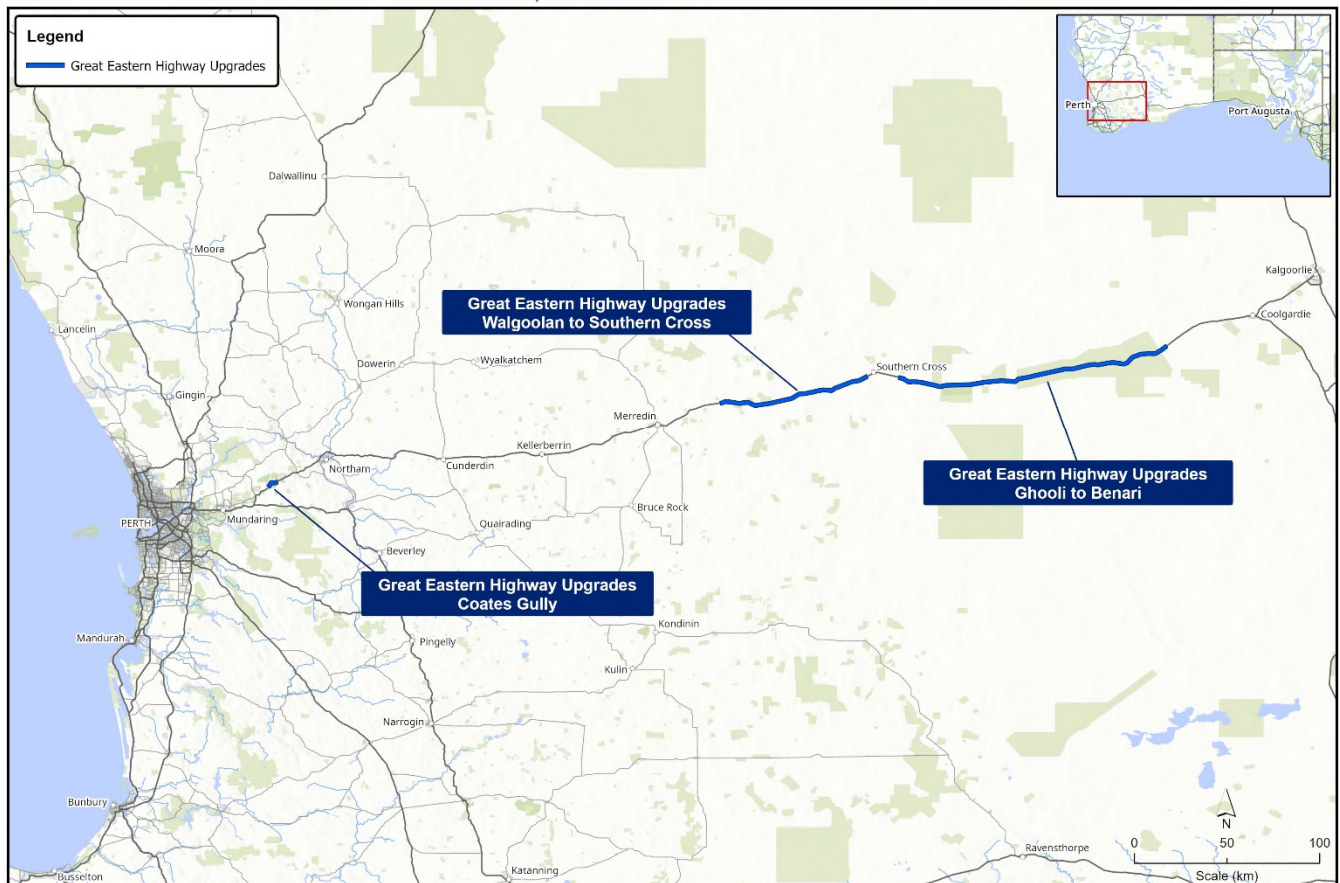
- Improved road safety for all road users
- Improved freight productivity
- Improved efficiency and network reliability

Project timelines

- This project is expected to start construction in early 2022 and be finished construction by mid 2025

INFRASTRUCTURE INVESTMENT PROGRAM GREAT EASTERN HIGHWAY UPGRADES – COATES GULLY, WALGOOLAN TO SOUTHERN CROSS AND GHOOOLI TO BENARI

Australian Government
Department of Infrastructure, Transport,
Regional Development and Communications





Australian Government

Infrastructure Investment Program

BUILDING OUR FUTURE

Great Northern Highway - Broome to Kununurra (Nellie Springs to Sally Downs Well and Arthur Creek)

Western Australia

Australian Government funding: \$48.0 million

Western Australian Government contribution: \$12.0 million

Total: \$60.0 million

Project description

The project will upgrade the Great Northern Highway by replacing a single lane bridge with a two-lane bridge at Arthur Creek, and upgrading four floodways to bridges between Nellie Springs and Sally Downs Well.

The Great Northern Highway is one of the main land transport links between Perth and the Kimberley Region and the only sealed road between the Port of Broome and the Port of Wyndham. The link is relied upon by mining and agricultural operations, which use the port for both export of product and the import of fuel and equipment. Local communities depend on the road for access to fuel, supplies and essential services.

The project will improve the efficiency, safety and reliability of the road between Port of Broome and Port of Wyndham. It will also support regional economic development by encouraging the continued development of the regional tourism industry through improved travel times, travel experience and reliability.

Jobs supported

- This project is expected to support 100 direct and indirect jobs

Project benefits

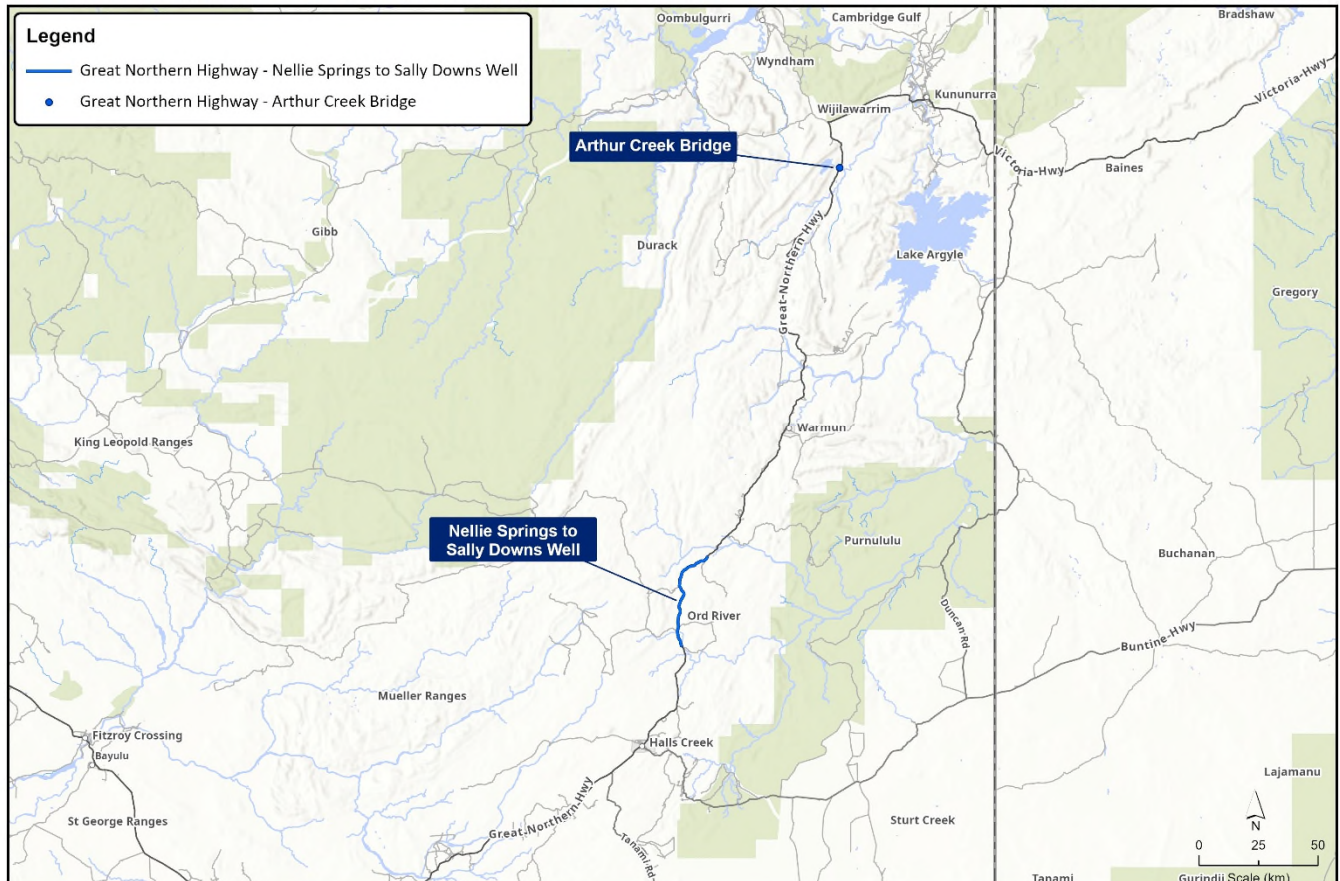
- Improved road safety for all road users
- Improved efficiency and network reliability

Project timelines

- This project is expected to start construction in mid 2022 and be finished construction by late 2025

INFRASTRUCTURE INVESTMENT PROGRAM

GREAT NORTHERN HIGHWAY – BROOME TO KUNUNURRA (NELLIE SPRINGS TO SALLY DOWNS WELL AND ARTHUR CREEK)





Australian Government

BUILDING OUR FUTURE

Infrastructure Investment Program

Indian Ocean Drive - Jurien Bay to Brand Highway

Western Australia

Australian Government funding: \$44.0 million

Western Australian Government contribution: \$11.0 million

Total: \$55.0 million

Project description

The project will realign, improve and widen seals on Indian Ocean Drive between Jurien Bay and the Brand Highway.

The coast between Jurien and Dongara is home to a large fishing and lime sand industry. The route has seen significant increases in traffic volumes as it provides enhanced accessibility and separation from heavy vehicles on Brand Highway. The increases in traffic have highlighted deficiencies in the older section to cope with the increased traffic and the need for an increase in dedicated passing lanes along the route. The project is expected to improve road safety and efficiency on Indian Ocean Drive, which provides access to tourist areas to the north of Perth.

Jobs supported

- This project is expected to support 100 direct and indirect jobs based on Australian Government estimates

Project benefits

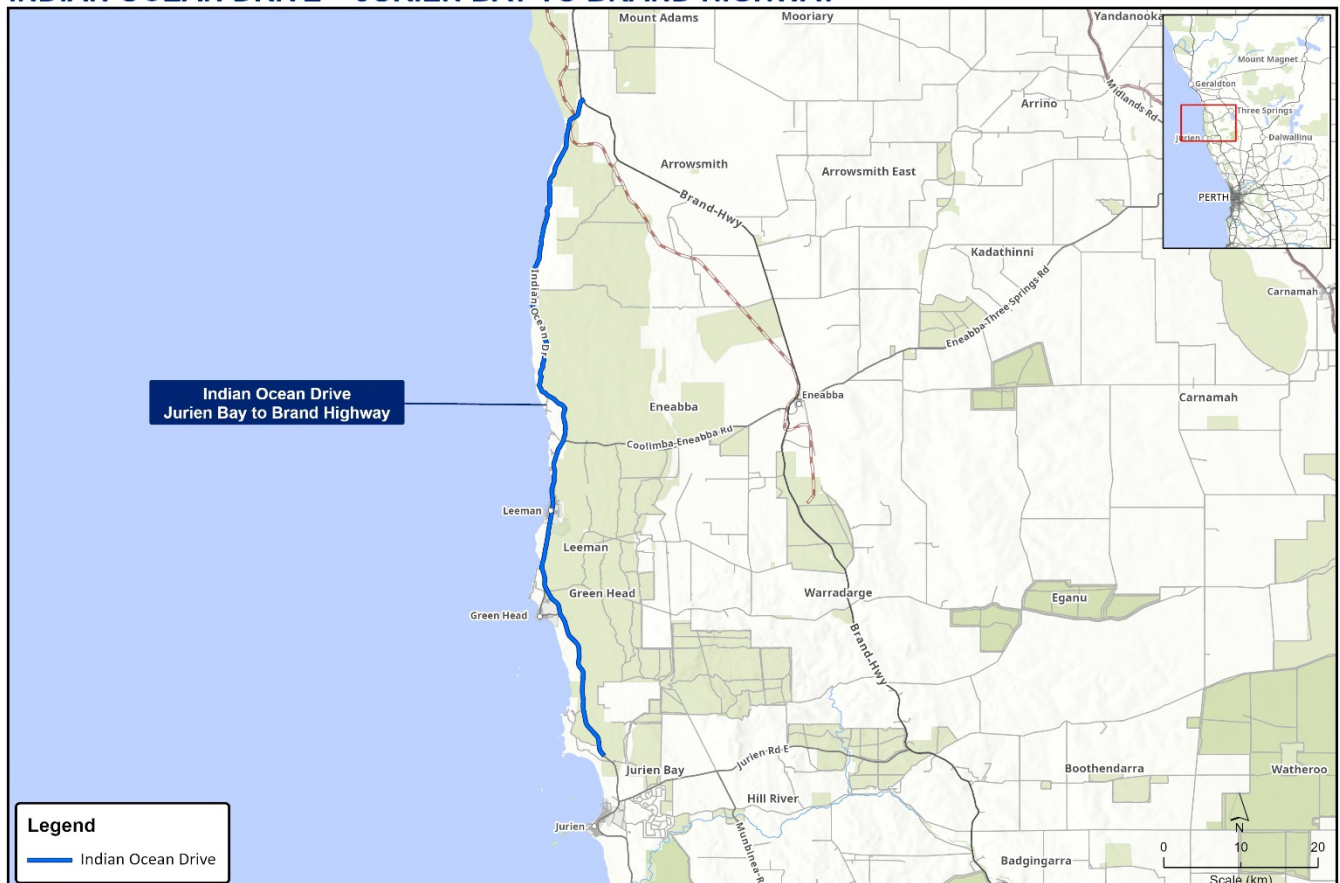
- Improved road safety for all road users
- Improved efficiency and network reliability

Project timelines

- This project is expected to start construction in mid 2022 and be finished construction by late 2024

INFRASTRUCTURE INVESTMENT PROGRAM INDIAN OCEAN DRIVE – JURIEN BAY TO BRAND HIGHWAY

Australian Government
Department of Infrastructure, Transport,
Regional Development and Communications





Australian Government

Infrastructure Investment Program

Kalgoorlie Rail Realignment - Business Case

Western Australia

BUILDING OUR FUTURE

Australian Government funding: \$2.0 million

Other contributions: \$0.5 million
Total: \$2.5 million

Project description

The project involves development of a business case for a realignment of the rail line through Kalgoorlie. The business case will look into rail designs that will support efficient access and industrial development in the area.

Project benefits

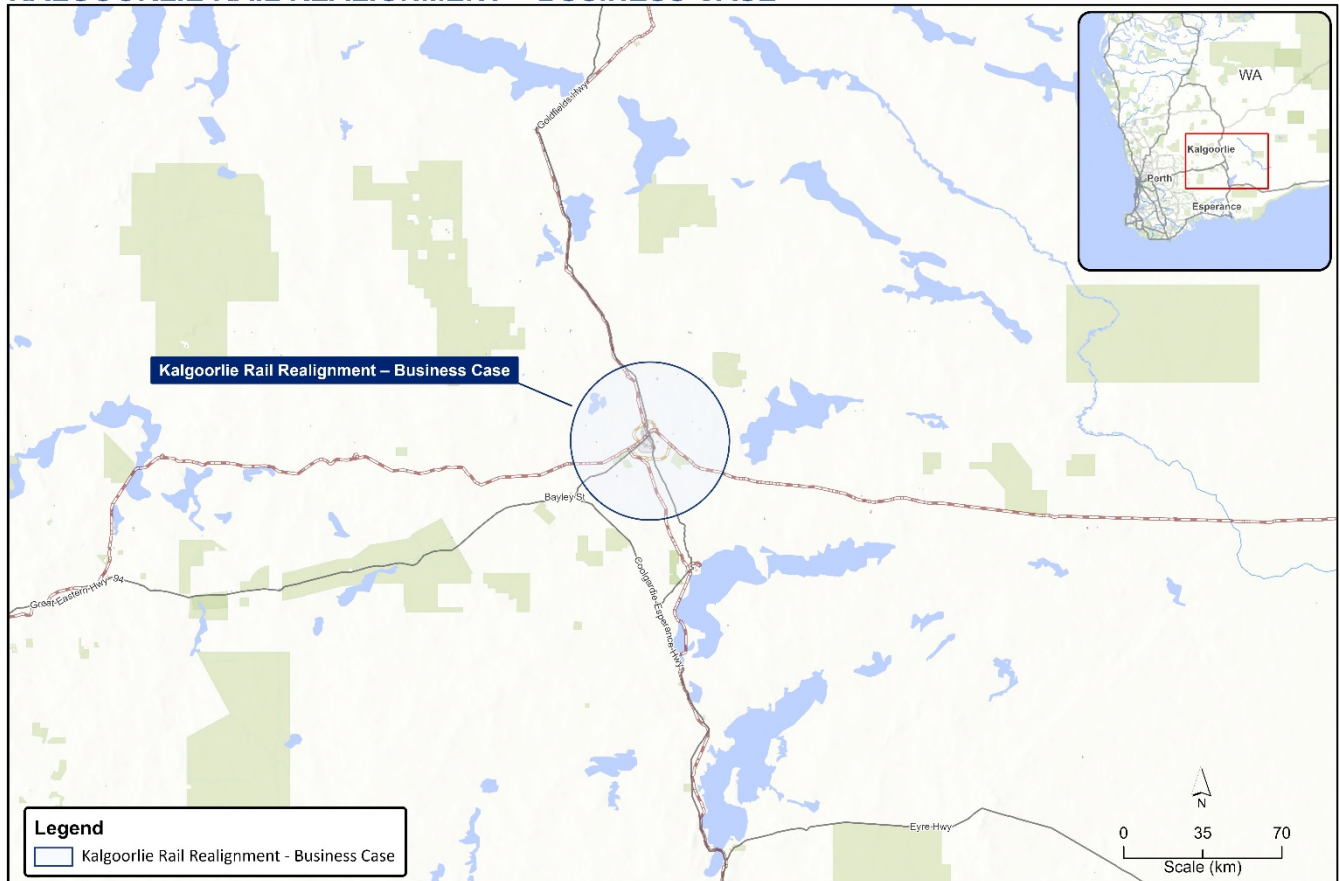
- Planning a design of future public investments
- Improved freight rail services

Project timelines

- This project is expected to start in mid 2022 and be finished by mid 2024

INFRASTRUCTURE INVESTMENT PROGRAM KALGOORLIE RAIL REALIGNMENT – BUSINESS CASE

Australian Government
Department of Infrastructure, Transport,
Regional Development and Communications





Australian Government

BUILDING OUR FUTURE

Urban Congestion Fund

Leach Highway (Welshpool Road Interchange)

Western Australia

Australian Government funding: \$68.0 million

This includes \$21.5 million of additional funding provided in the 2021-22 Budget
Western Australian Government contribution: \$68.0 million

Total: \$136.0 million

Project description

The project will construct an overpass to separate the Leach Highway from Welshpool Road and upgrade the Leach Highway Bridge over rail, south of the Welshpool interchange.

Leach Highway is a strategic freight and regional link connecting Fremantle and the Inner harbour with the industrial areas of O'Connor, Kewdale and Welshpool, including the Kewdale Intermodal Rail Freight Terminal and Perth Airport. The Leach Highway and Welshpool Road intersection is immediately south of the Gateway WA project area and experiences high levels of congestion. The project is expected to improve connectivity and travel times between major freight infrastructure, including airports and commercial and industrial areas, and improve safety for all road users.

Jobs supported

- This project is expected to support 600 direct and indirect jobs

Project benefits

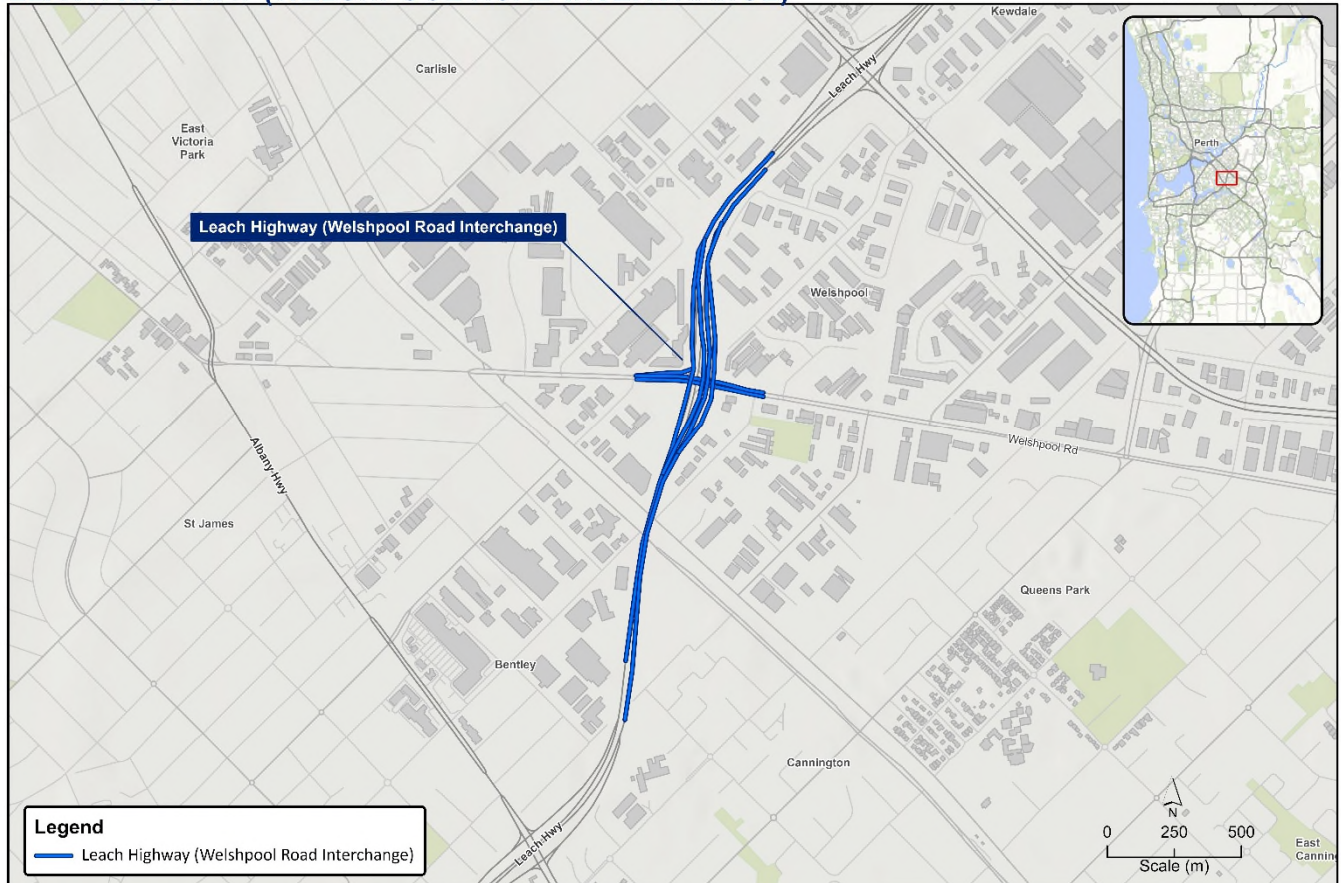
- Improved efficiency and network reliability
- Reduced congestion and improved travel times
- Improved freight productivity and access to freight gateways

Project timelines

- This project is expected to start construction in mid 2021 and be finished construction by early 2023

INFRASTRUCTURE INVESTMENT PROGRAM LEACH HIGHWAY (WELSHPOOL ROAD INTERCHANGE)

Australian Government
Department of Infrastructure, Transport,
Regional Development and Communications





Australian Government

BUILDING OUR FUTURE

Infrastructure Investment Program

Mandurah Estuary Bridge Duplication

Western Australia

Australian Government funding: \$55.0 million

Western Australian Government contribution: \$55.0 million

Total: \$110.0 million

Project description

The Mandurah Estuary Bridge project will construct an additional bridge next to the existing Mandurah Estuary Bridge. The bridge will provide an additional two lanes for traffic, and connect cyclists and pedestrians to the southern area of Mandurah. It will have the same configuration as the existing bridge.

Jobs supported

- This project is expected to support 200 direct and indirect jobs based on Australian Government estimates

Project benefits

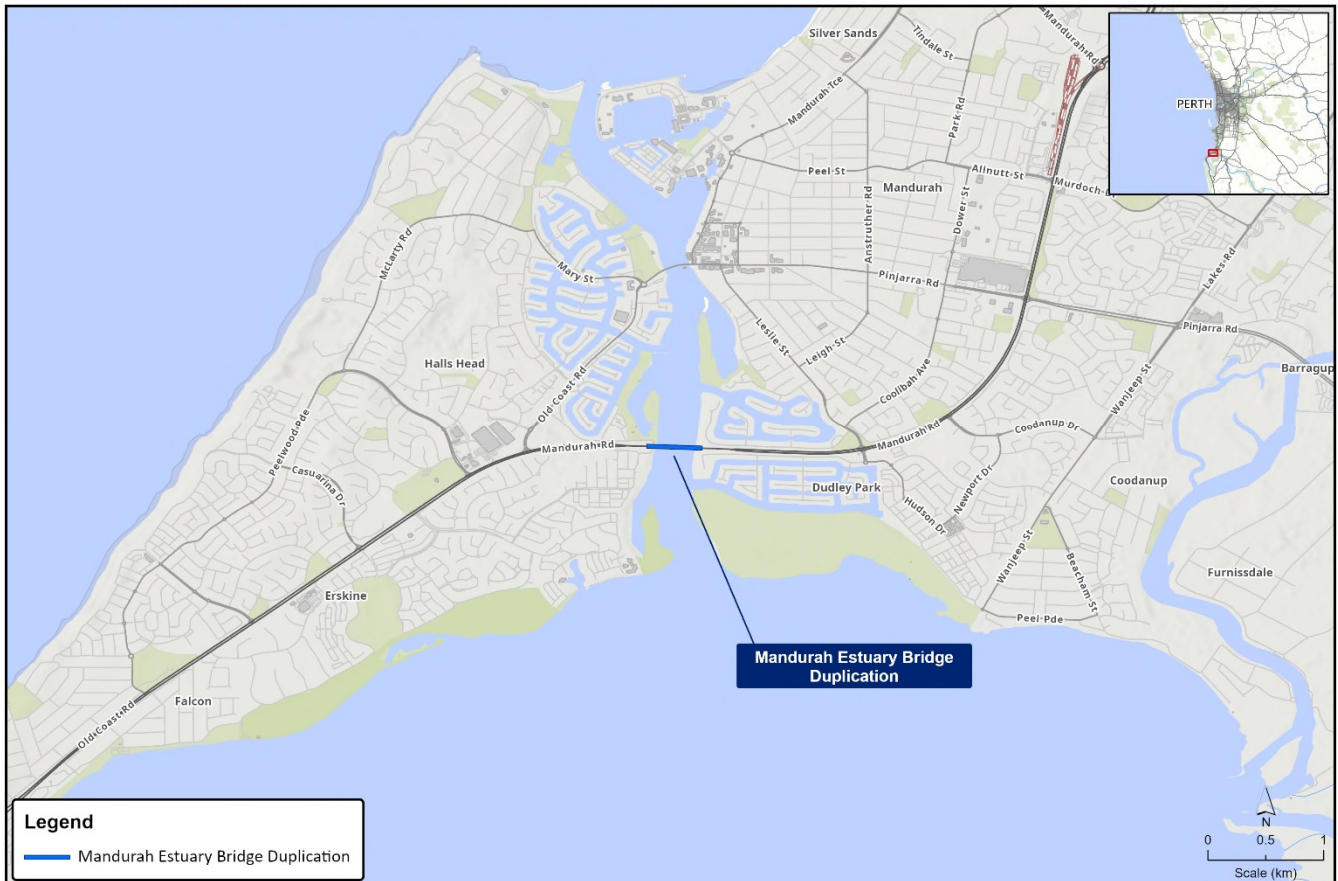
- Reduced congestion and improved travel times
- Improved accessibility and connectivity of road networks
- Improved freight productivity
- Improved road safety for all road users

Project timelines

- This project is expected to start construction in early 2022 and be finished construction by mid 2025

INFRASTRUCTURE INVESTMENT PROGRAM MANDURAH ESTUARY BRIDGE DUPLICATION

Australian Government
Department of Infrastructure, Transport,
Regional Development and Communications





Australian Government

Infrastructure Investment Program

BUILDING OUR FUTURE

Marble Bar Road Upgrade

Western Australia

Australian Government funding: \$48.0 million

Western Australian Government contribution: \$12.0 million

Other contribution: \$60.0 million

Total: \$120.0 million

Project description

This project will upgrade approximately 100 kilometres of Marble Bar Road between McPhee and Roy Hill mines to a fit-for-purpose sealed road that can support quad semi-trailer haulage with serviceability level to support 330 days per year operations.

The proposed Marble Bar Road upgrade is designed to facilitate the McPhee mine development, which will blend high phosphorus iron ore with ore from the existing Roy Hill mine to create an exportable commodity from both mines. The upgrade will also improve public safety on Marble Bar Road, improve emergency access, improve freight efficiency, and build capability within Indigenous communities.

Jobs supported

- This project is expected to support 220 direct and indirect jobs based on Australian Government estimates

Project benefits

- Improved freight productivity
- Improved accessibility and connectivity of road networks
- Improved road safety for all road users

Project timelines

- This project is expected to start construction in early 2022 and be finished construction by mid 2024

INFRASTRUCTURE INVESTMENT PROGRAM MARBLE BAR ROAD UPGRADE

Australian Government
Department of Infrastructure, Transport,
Regional Development and Communications





Australian Government

Infrastructure Investment Program

BUILDING OUR FUTURE

METRONET: Hamilton Street / Wharf Street Grade Separations and Elevation of Associated Stations
Western Australia

Australian Government funding: \$237.5 million

Western Australian Government contribution: \$237.5 million
Total: \$475.0 million

Project description

The project involves the removal of two road-rail level crossings (at Hamilton Street and Wharf Street) on the inner Armadale Line through an elevated rail solution, and the reconstruction of Queens Park and Cannington stations as elevated stations.

The project will improve safety by resolving conflict between trains, vehicles and pedestrians, and ease traffic movements in the area.

Jobs supported

- This project is expected to support 860 direct and indirect jobs based on Australian Government estimates

Project benefits

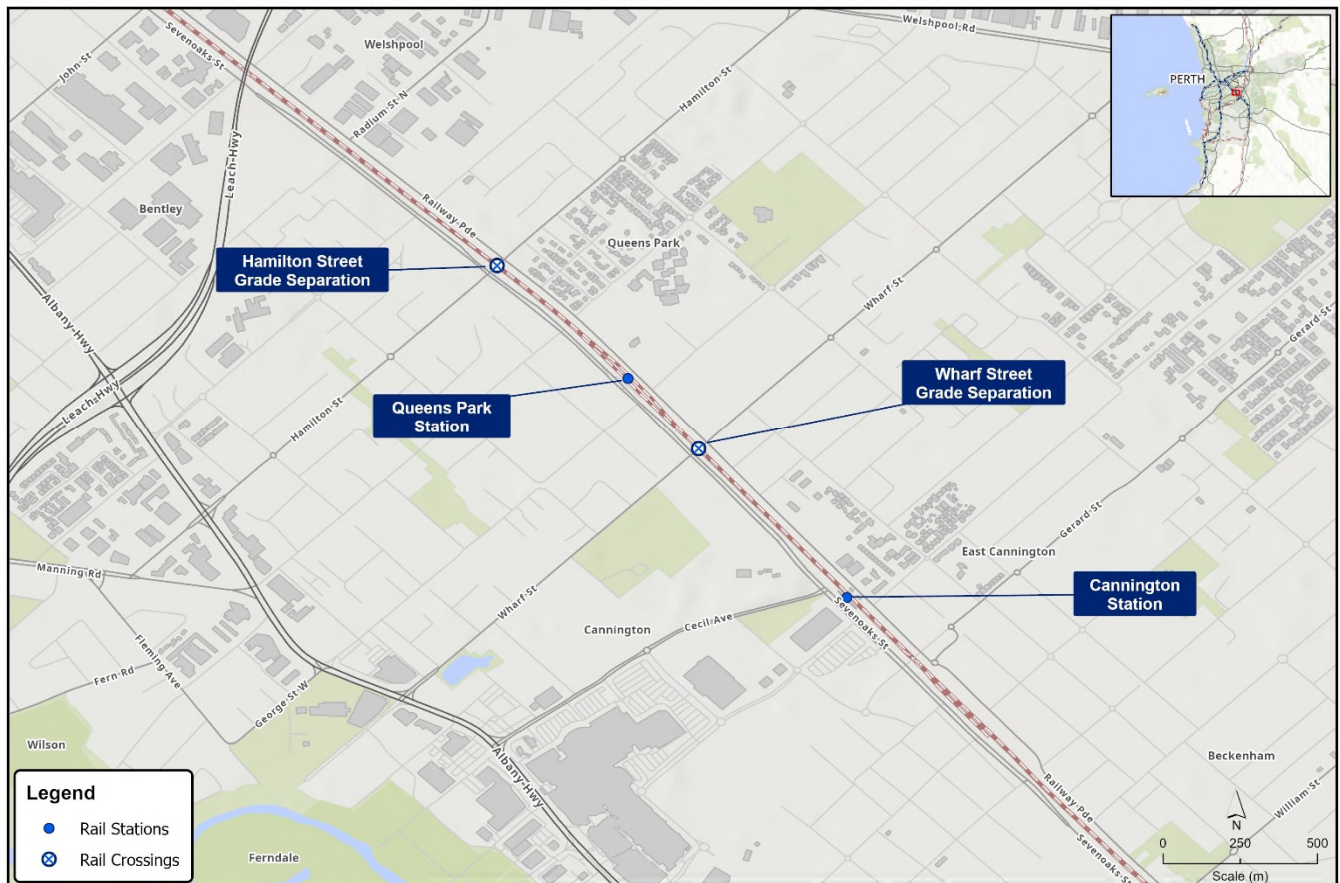
- Reduced congestion and improved travel times
- Improved road safety for all road users

Project timelines

- This project is expected to start construction in early 2022 and be finished construction by mid 2025

INFRASTRUCTURE INVESTMENT PROGRAM

METRONET: HAMILTON STREET / WHARF STREET GRADE SEPARATIONS AND ELEVATION OF ASSOCIATED STATIONS





Australian Government

Infrastructure Investment Program

BUILDING OUR FUTURE

METRONET: Byford Extension

Western Australia

Australian Government funding: \$350.5 million

This includes \$110.0 million of additional funding provided in 2021-22 Budget
Western Australian Government contribution: \$284.5 million

Total: \$635.0 million

Project description

The Byford Extension is one of a number of projects the Australian Government is supporting through a commitment to METRONET.

This project will extend the Armadale Line by approximately 8 kilometres south to a new passenger rail station at Byford.

The additional funding provided to this project will enable the construction of elevated rail in Armadale, from the north of Armadale Road to the south of Church Street. This will include a new elevated Armadale Station and resulting grade separations at the existing Armadale Road and Forrest Road level crossings.

The Byford Extension will improve the transport capacity of Perth's south-east corridor and provide a high quality public transport connection between Byford and Armadale.

Jobs supported

- This project is expected to support 1150 direct and indirect jobs based on Australian Government estimates

Project benefits

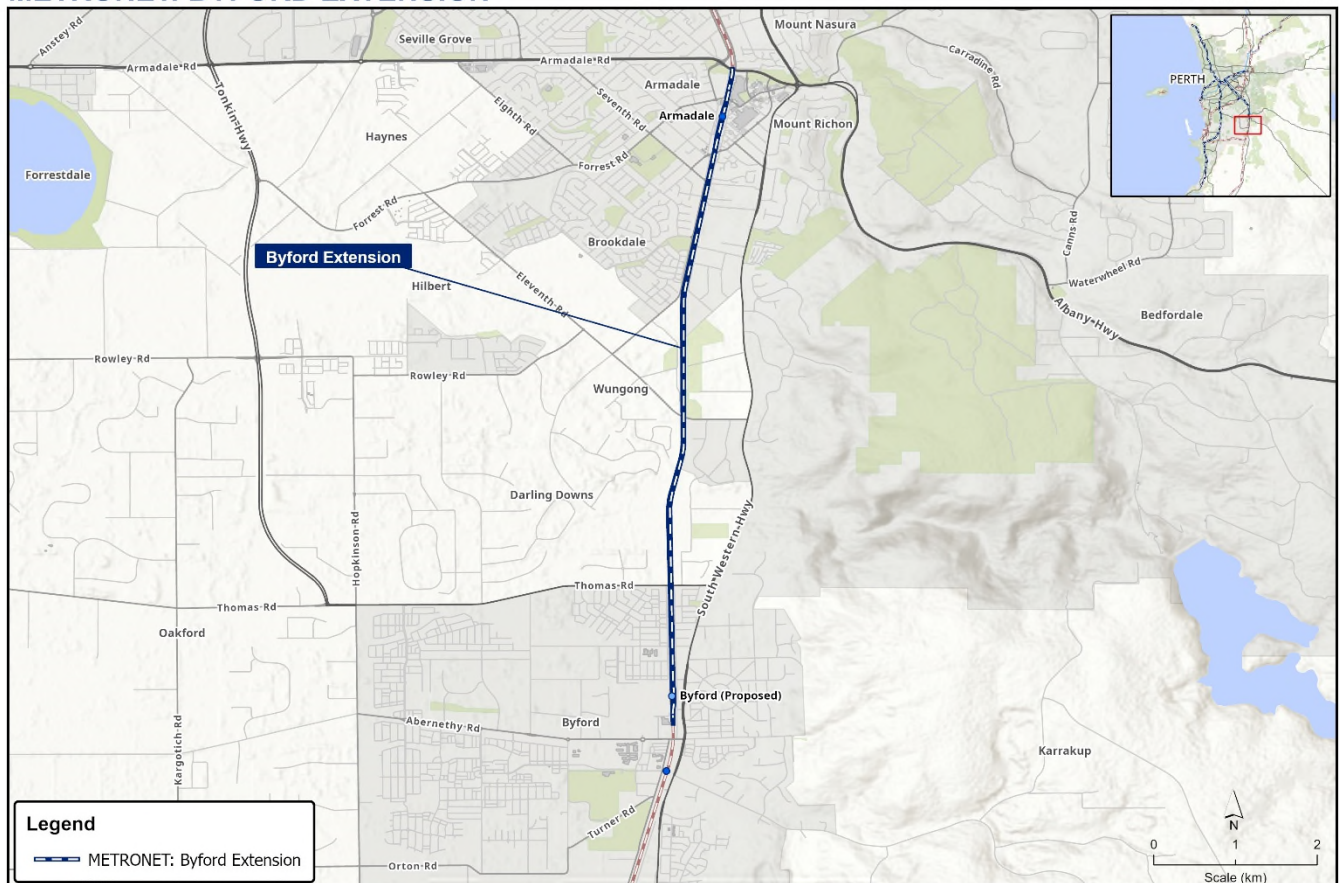
- Improved passenger rail services
- Reduced congestion and improved travel times
- Improved connectivity between people with jobs and services, and goods with markets

Project timelines

- This project is expected to start construction in early 2022 and be finished construction by late 2023

INFRASTRUCTURE INVESTMENT PROGRAM METRONET: BYFORD EXTENSION

Australian Government
Department of Infrastructure, Transport,
Regional Development and Communications





Australian Government

BUILDING OUR FUTURE

Infrastructure Investment Program

METRONET: High Capacity Signalling
Western Australia

Australian Government funding: \$133.8 million

This includes \$31.50 million of additional funding provided in 2021-22 Budget
Western Australian Government contribution: \$133.8 million
Total: \$267.6 million

Project description

The High Capacity Signalling project involves the replacement of the existing Perth urban rail signalling and control systems, which are nearing the end of their asset lives. The project will replace these ageing assets with new advanced train control systems to allow trains to operate more frequently. Importantly, it will build capacity into the rail network.

The High Capacity Signalling project has a total cost of over \$1.2 billion with a timeframe of approximately 10 years for delivery. This investment will fund Phase One activities of the project which include planning and procurement of Automatic Train Control (ATC); Public Transport Operations Control Centre planning, procurement, design, construction and commissioning, to be ready for ATC equipment; a backup signalling equipment room; commencing ATC wayside design; commencing Automatic Train Supervision equipment installation; and completing prototype fitment of the first train.

The additional funding provided in the 2021-22 Budget will support the roll-out of the High Capacity Signalling project.

Jobs supported

- This project is expected to support 300 direct and indirect jobs

Project benefits

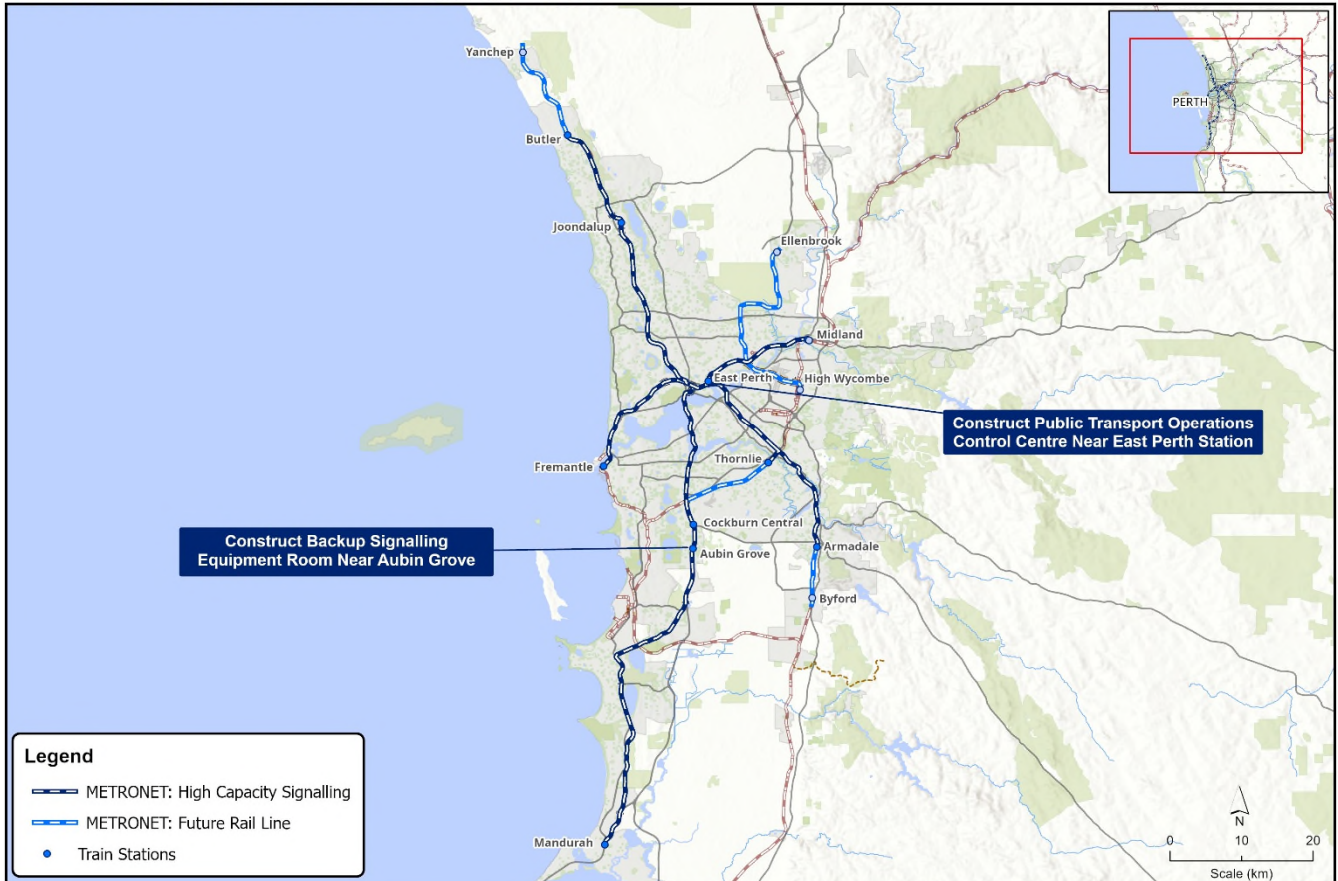
- Improved passenger rail services
- Improved efficiency and network reliability

Project timelines

- This phase of the project is expected to start in mid 2021 and be finished in mid 2024

INFRASTRUCTURE INVESTMENT PROGRAM METRONET: HIGH CAPACITY SIGNALLING

Australian Government
Department of Infrastructure, Transport,
Regional Development and Communications





Australian Government

BUILDING OUR FUTURE

Urban Congestion Fund

Mitchell Freeway Extension – Hester Avenue to Romeo Road

Western Australia

Australian Government funding: \$116.0 million

This includes \$8.50 million of additional funding provided in 2021-22 Budget
Western Australian Government contribution: \$116.0 million

Total: \$232.0 million

Project description

The project will extend the Mitchell Freeway a further 5.6 kilometres from Hester Avenue to Romeo Road and convert the existing road into four lanes with a future provision for six lanes. It will also involve signalling of intersections, construction of new intersections, construction of on and off-ramps, the construction of a rail tunnel and a principal shared path, an extra 1.8 kilometre lane to Wanneroo Road from Romeo Road to Trian Road and upgrading existing access and service roads.

Additional funding will allow for an expanded project scope to be delivered, specifically the provision of a grade separated interchange providing access to Butler Boulevard.

Jobs supported

- This project is expected to support 1,200 direct and indirect jobs

Project benefits

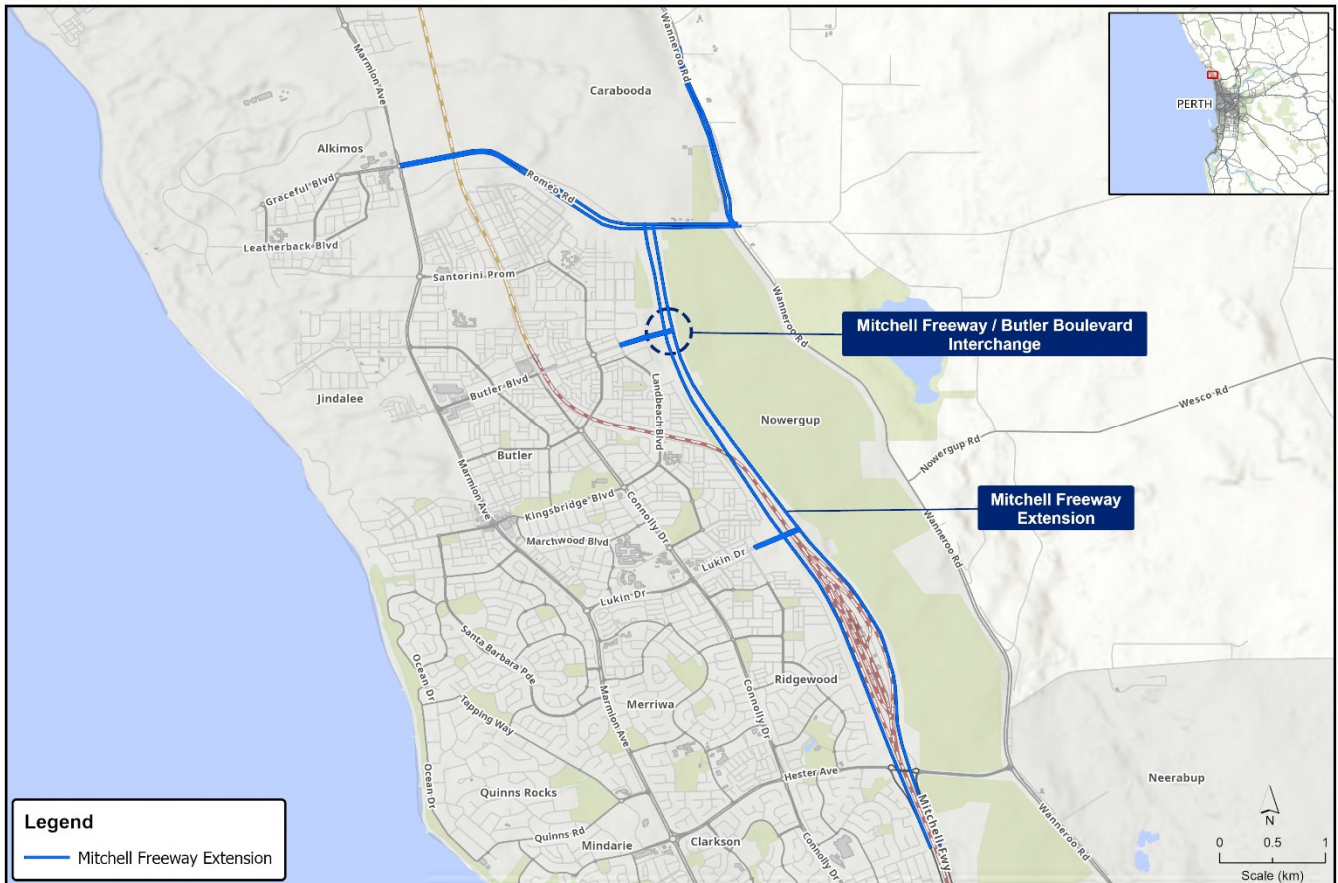
- Improved congestion and improved travel times
- Improved road safety for all road users
- Improved accessibility and connectivity of road networks
- Improved efficiency and network reliability

Project timelines

- This project is expected to start construction in mid 2021 and be finished by late 2022

INFRASTRUCTURE INVESTMENT PROGRAM MITCHELL FREEWAY EXTENSION – HESTER AVENUE TO ROMEO ROAD

Australian Government
Department of Infrastructure, Transport,
Regional Development and Communications





Australian Government

BUILDING OUR FUTURE

Infrastructure Investment Program

Mitchell Freeway Widening Southbound – Cedric Street to Vincent Street

Western Australia

Australian Government funding: \$39.2 million

This includes \$7.2 million of additional funding provided in the 2021-22 Budget
Western Australian Government contribution: \$9.8 million

Total: \$49.0 million

Project description

The project widened the Mitchell Freeway southbound between Cedric Street and Vincent Street to create four continuous lanes from Erindale Road to Vincent Street.

This project provided additional capacity at the southern section of Mitchell Freeway to alleviate congestion during the morning peak period.

The additional funding is for design changes required for drainage near concrete barriers in the median, and design changes required to noise walls.

Jobs supported

- This project supported approximately 280 direct and indirect jobs

Project benefits

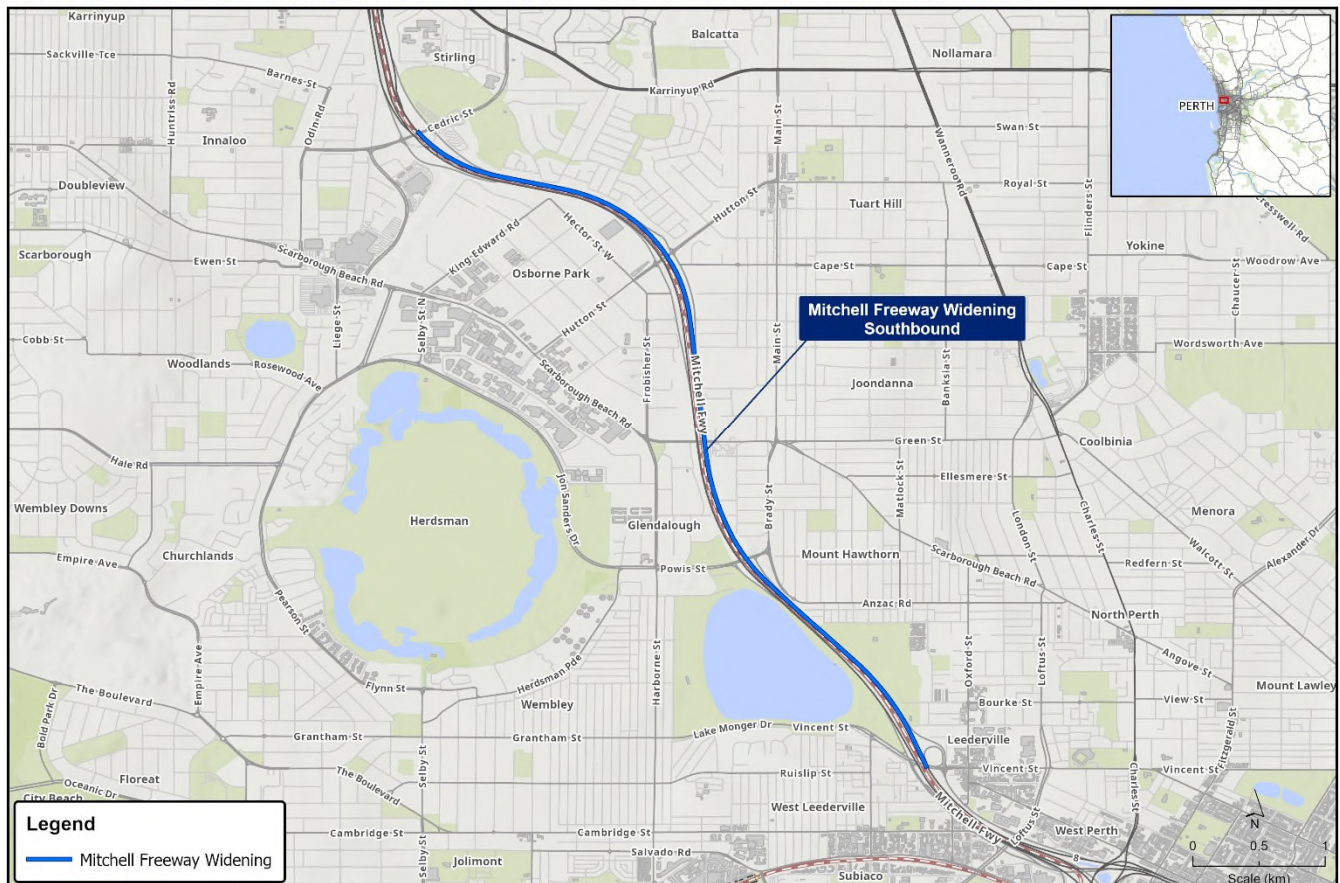
- Reduced congestion and improved travel times
- Improved efficiency and network reliability
- Improved road safety for all road users

Project timelines

- This project started construction in late 2018 and finished construction in mid 2020

INFRASTRUCTURE INVESTMENT PROGRAM MITCHELL FREEWAY WIDENING SOUTHBOUND – CEDRIC STREET TO VINCENT STREET

Australian Government
Department of Infrastructure, Transport,
Regional Development and Communication





Australian Government

Major Projects Business Case Fund

BUILDING OUR FUTURE

Orrong Road Expressway - Graham Farmer Freeway to Leach Highway

Planning

Western Australia

Australian Government funding: \$10.0 million

Western Australian Government contribution: \$10.0 million

Total: \$20.0 million

Project description

The project will fund planning works for an expressway that connects the Graham Farmer Freeway to Leach Highway along Orrong Road, including the development of a business case to assess the scope, design and cost of the expressway.

Project benefits

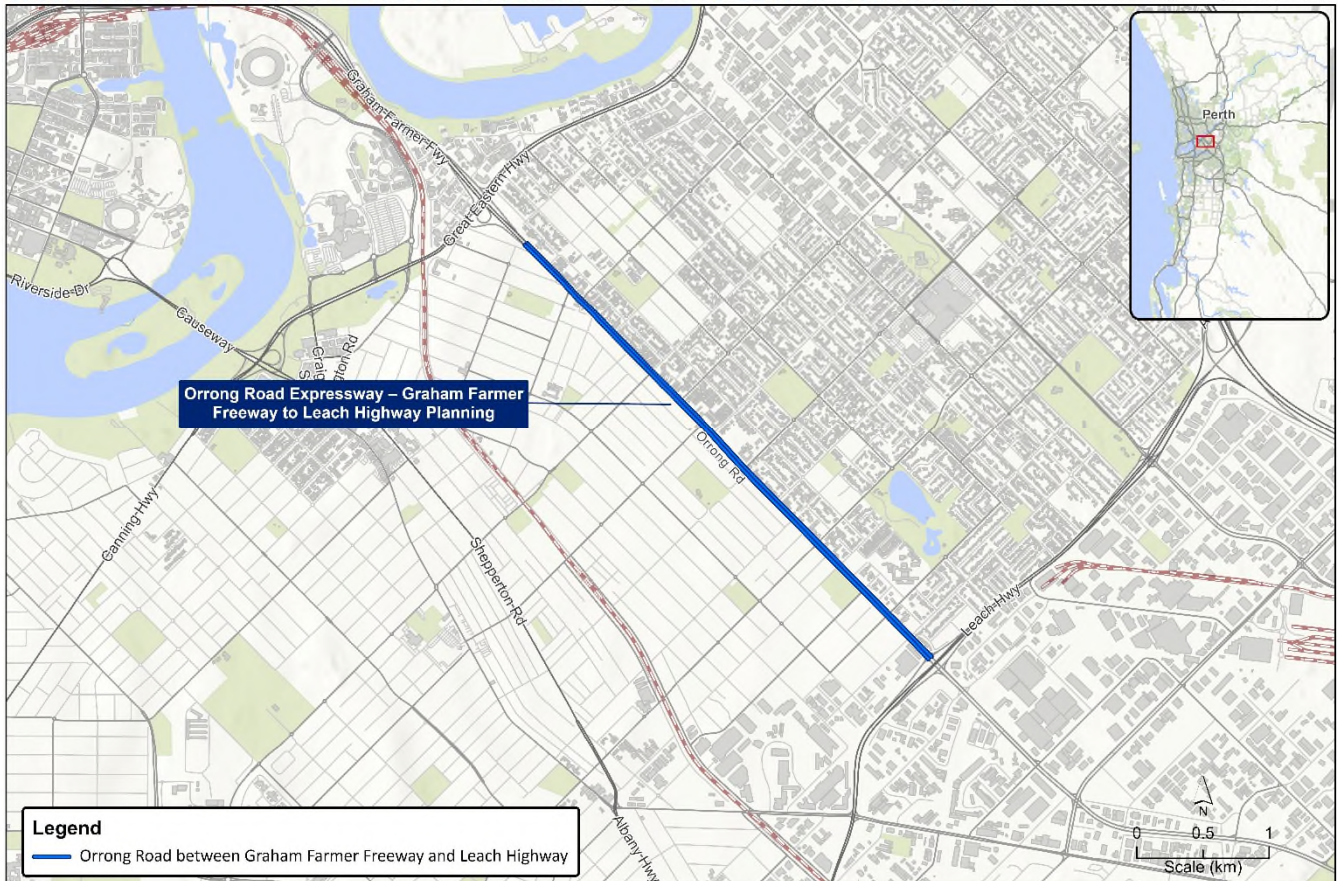
- Supporting a more integrated and effective transport system
- Planning and design of future public investments

Project timelines

- This project is expected to start in late 2021 and be finished by mid 2025

INFRASTRUCTURE INVESTMENT PROGRAM ORRONG ROAD EXPRESSWAY - GRAHAM FARMER FREEWAY TO LEACH HIGHWAY PLANNING

Australian Government
Department of Infrastructure, Transport,
Regional Development and Communications





Australian Government

BUILDING OUR FUTURE

Infrastructure Investment Program

Perth Airport Precinct - Northern Access

Western Australia

Australian Government funding: \$85.0 million

Western Australian Government contribution: \$85.0 million

Total: \$170.0 million

Project description

The project will construct a grade separated interchange at Great Eastern Highway Bypass and Kalamunda Road and replace the existing load limited Kalamunda Road Bridge over rail with a new four lane bridge with full carrying capacity.

Jobs supported

- This project is expected to support 310 direct and indirect jobs based on Australian Government estimates

Project benefits

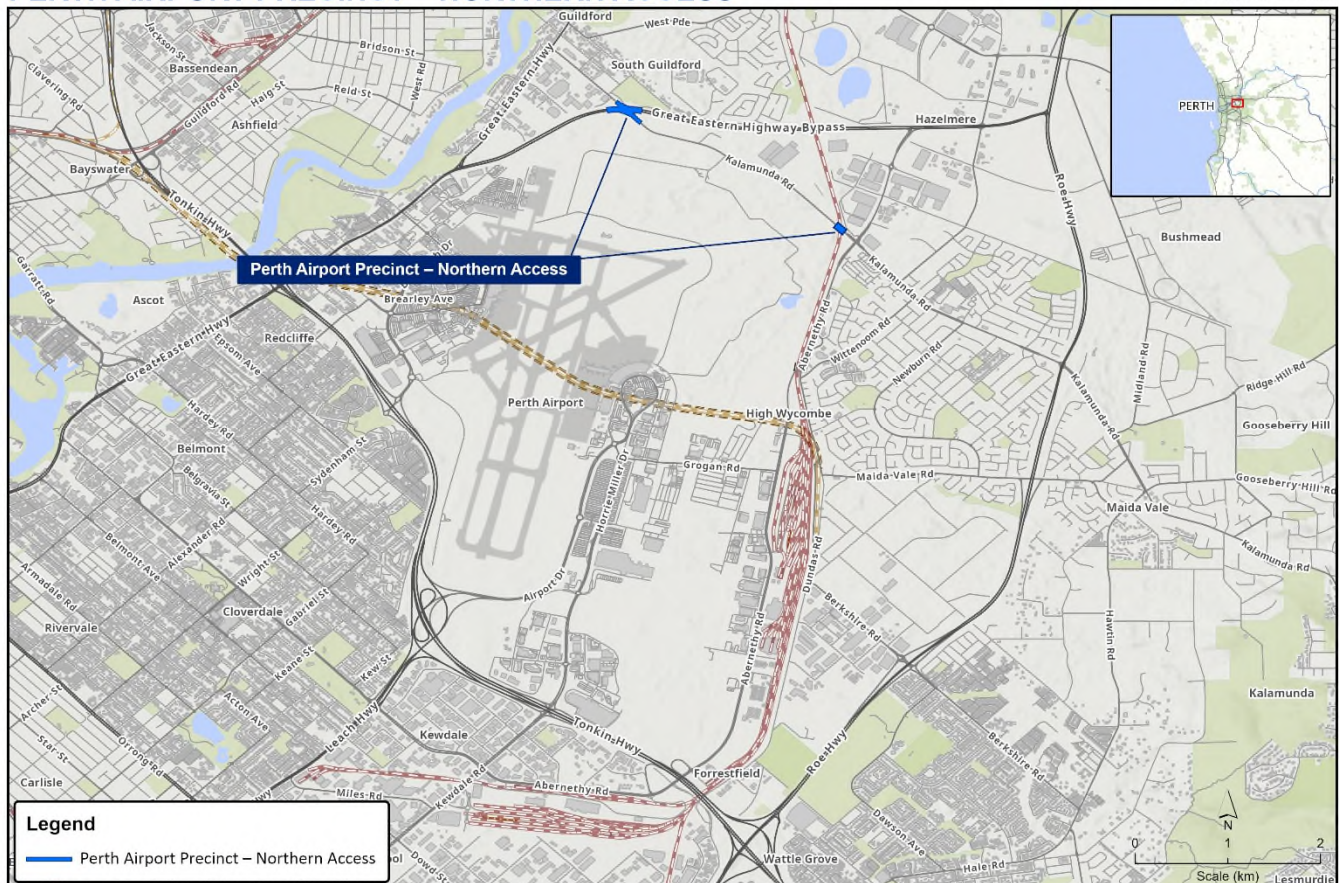
- Improved road safety for all road users
- Reduced congestion and improved travel times
- Improved efficiency and network reliability
- Improved freight productivity

Project timelines

- This project is expected to start construction in late 2023 and be finished construction by mid 2026

INFRASTRUCTURE INVESTMENT PROGRAM PERTH AIRPORT PRECINCT – NORTHERN ACCESS

Australian Government
Department of Infrastructure, Transport,
Regional Development and Communications





Australian Government

Roads of Strategic Importance

BUILDING OUR FUTURE

Port Augusta to Perth (WA) – Great Eastern Highway – Walgoolan to Southern Cross and Coates Gully

Western Australia

Australian Government funding: \$32.4 million

This includes \$14.4 million of additional funding provided in the 2021-22 Budget
Western Australian Government contribution: \$8.1 million

Total: \$40.5 million

Project description

The project will upgrade three sections, including:

- Walgoolan Southern Cross: Replace Bridge 0629 offline, and realign the road approaches
- Walgoolan Southern Cross: Widen Bridge 0630A online, and widen the existing road approaches
- Coates Gully Section: Replace Bridge 0605 and 0607 online, widen and improve geometry of the existing road approaches, and provide the formation for overtaking lanes.

Additional funding for the corridor and project is required to deliver the full scope, due to risks associated with the rail line and the alignment.

Jobs supported

- This project is expected to support 130 direct and indirect jobs

Project benefits

- Improved road safety for all road users
- Improved freight productivity

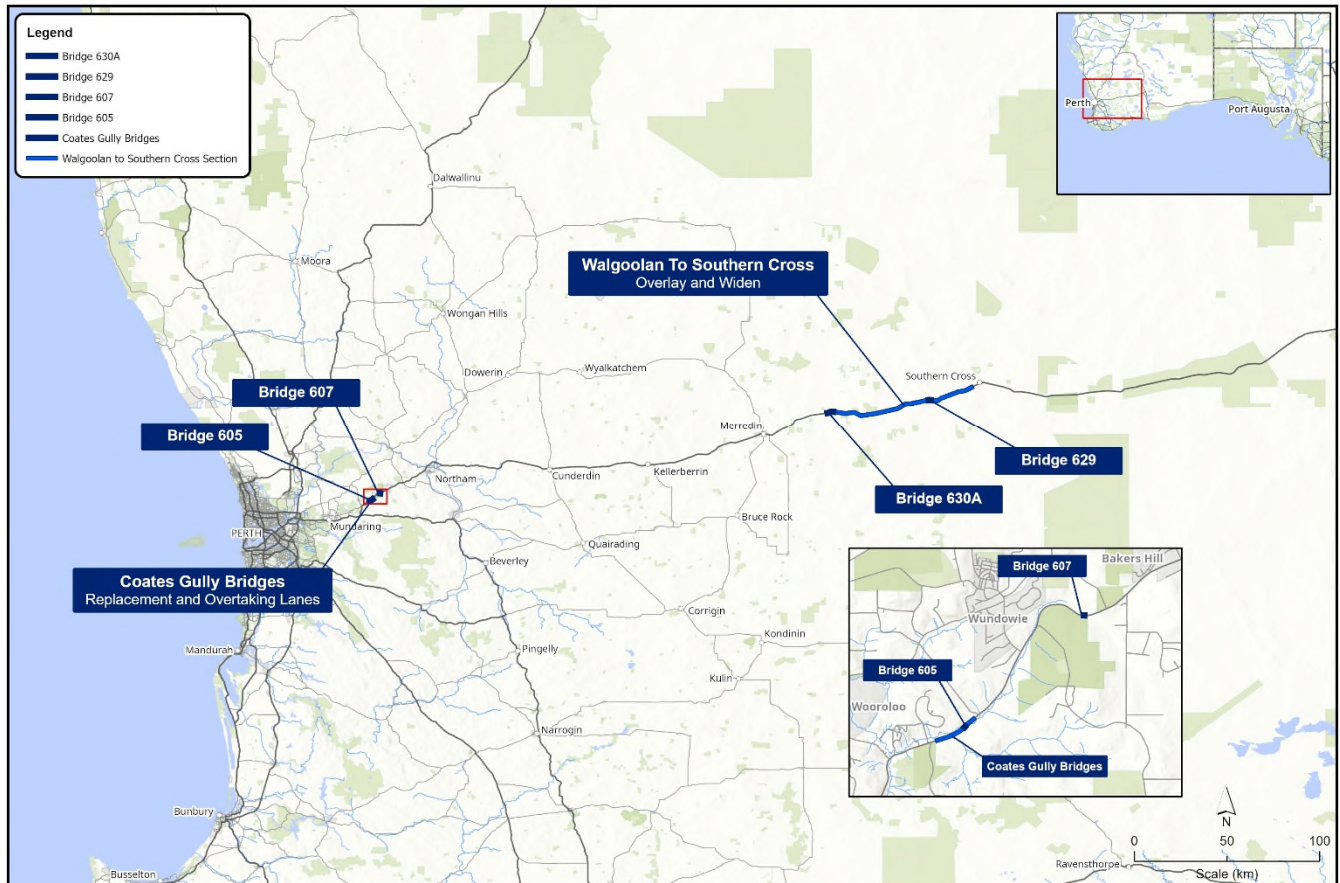
Project timelines

- This project is expected to start construction in mid 2021 and be finished construction by early 2022

INFRASTRUCTURE INVESTMENT PROGRAM

PORT AUGUSTA TO PERTH (WA) – GREAT EASTERN HIGHWAY – WALGOOLAN TO SOUTHERN CROSS AND COATES GULLY

Australian Government
Department of Infrastructure, Transport,
Regional Development and Communications





Australian Government

BUILDING OUR FUTURE

Infrastructure Investment Program

Regional State Road Safety Improvement Program

Western Australia

Australian Government funding: \$96.0 million

This includes \$16.0 million of additional funding provided in the 2021-22 Budget
Western Australian Government contribution: \$24.0 million

Total: \$120.0 million

Project description

The project is undertaking 34 low cost widening and safety projects across the Great Southern Region, South West Region, Mid West-Gascoyne Region, Goldfields-Esperance Region, Wheatbelt Region, Pilbara Region, Kimberley Region and Metropolitan Region. Works include widening of sealed shoulders to current formation and installation of audible edge lines.

Additional funding is required to deliver all agreed projects, as a number of projects have had higher than anticipated tender prices.

Jobs supported

- This project is expected to support 540 direct and indirect jobs

Project benefits

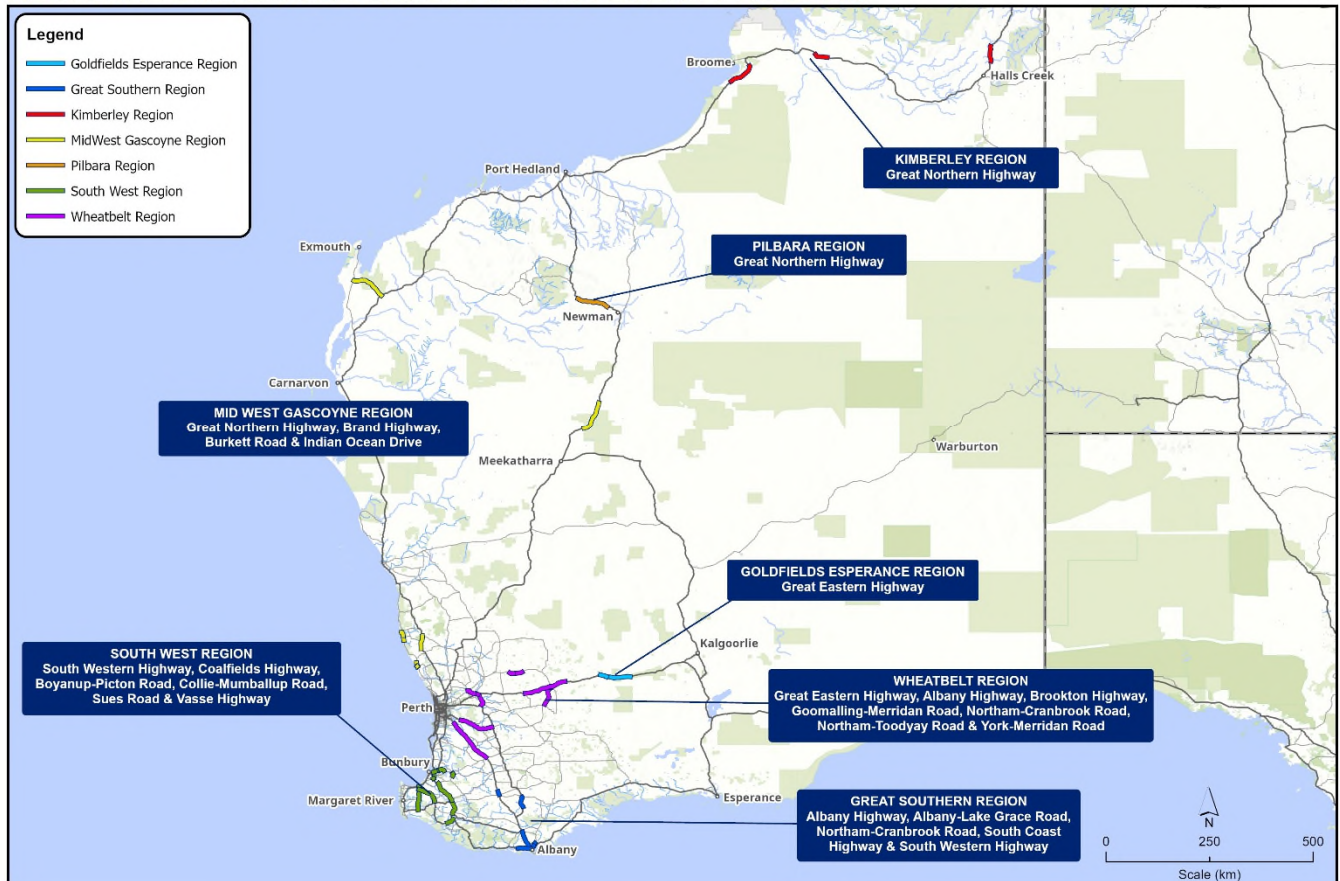
- Improved road safety for all road users
- Improved efficiency and network reliability

Project timelines

- This project started construction in mid 2020 and is expected to finish construction by mid 2021

INFRASTRUCTURE INVESTMENT PROGRAM REGIONAL STATE ROAD SAFETY IMPROVEMENT PROGRAM

Australian Government
Department of Infrastructure, Transport,
Regional Development and Communications





Australian Government

BUILDING OUR FUTURE

Infrastructure Investment Program

Reid Highway – Altone Road and Daviot Road / Drumpellier Drive - Grade Separated Intersections

Western Australia

Australian Government funding: \$112.5 million

Western Australian Government contribution: \$112.5 million

Total: \$225.0 million

Project description

The project will construct grade separations at the intersection of Reid Highway and Altone Road and at the intersection of Reid Highway, Daviot Road and Drumpellier Drive.

Reid Highway (west of West Swan Road) has an average weekday traffic volume of 27,060 vehicles with 10.7 per cent heavy vehicles, which results in congestion and safety concerns. With the completion of NorthLink WA, the majority of Reid Highway is now grade separated. Grade separations at these proposed intersections will reduce congestion, improve travel times and improve road safety for all users.

Jobs supported

- This project is expected to support 1,575 direct and indirect jobs

Project benefits

- Reduced congestion and improved travel times
- Improved efficiency and network reliability
- Improved road safety for all road users
- Improved connectivity between people with jobs and services, and goods with markets

Project timelines

- This project is expected to start construction in early 2023 and be finished construction by mid 2025

INFRASTRUCTURE INVESTMENT PROGRAM

REID HIGHWAY – ALTONE ROAD AND DAVIOT ROAD / DRUMPELLIER DRIVE – GRADE SEPARATED INTERSECTIONS





Australian Government

BUILDING OUR FUTURE

Infrastructure Investment Program

WA Agricultural Supply Chain Improvements - Package 1

Western Australia

Australian Government funding: \$160.0 million

Western Australian Government contribution: \$40.0 million

Total: \$200.0 million

Project description

The project will undertake various rail upgrades and associated adjustments to local roads impacted by longer trains loading grain in the Wheatbelt and Great Southern regions of Western Australia. It will also include various upgrades on roads used by the agricultural sector in the Wheatbelt, Midwest and Goldfields-Esperance regions.

The improvements will increase road safety by supporting the transport of more grain on rail and less by road. Upgrades to allow longer grain trains will reduce rail freight costs for grain growers and increase grain export supply chain capacity.

Jobs supported

- This project is expected to support 360 direct and indirect jobs

Project benefits

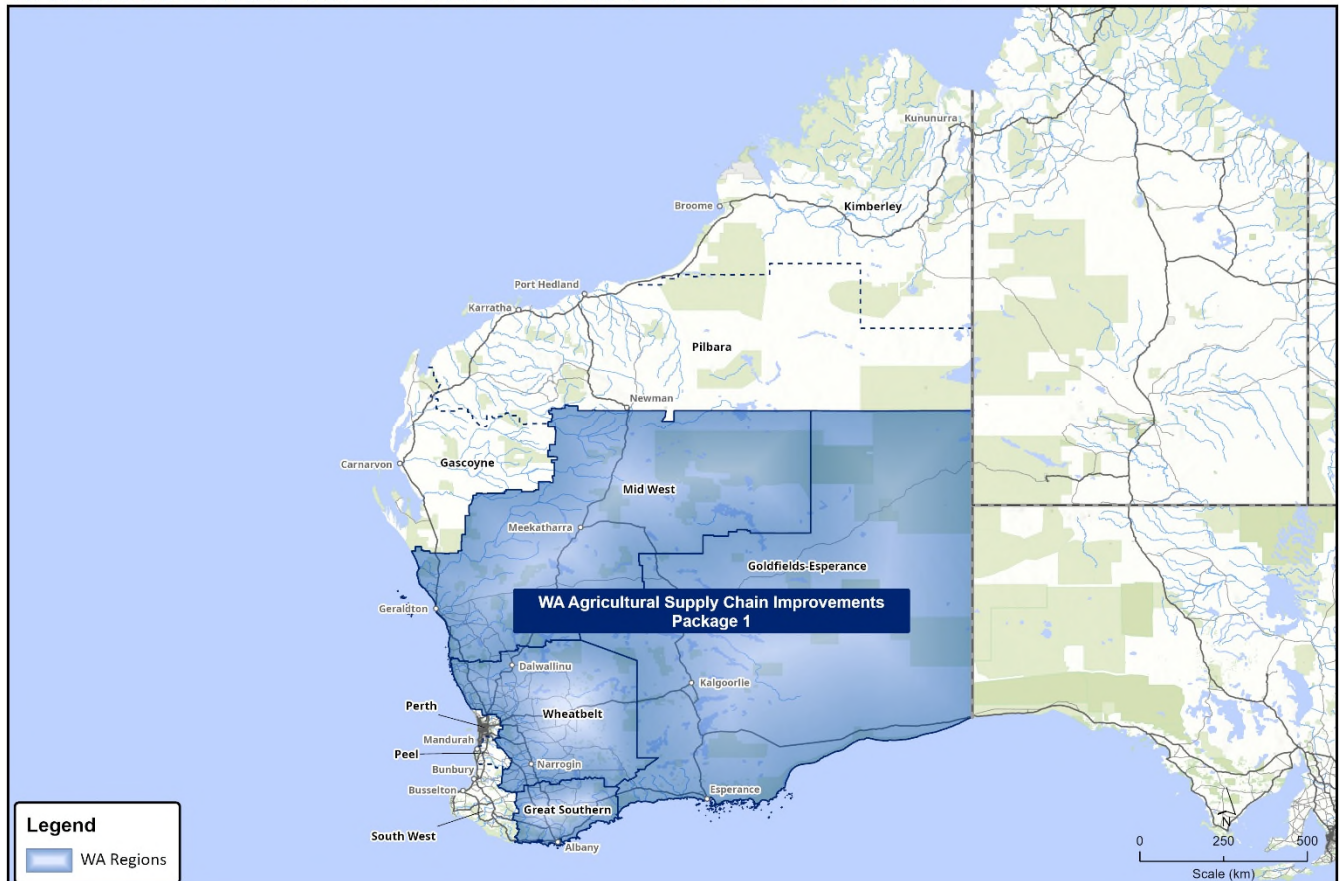
- Improved road safety for all road users
- Improved freight productivity
- Improved freight rail services
- Reduced congestion and improved travel times

Project timelines

- This project is expected to start construction in mid 2022 and be finished construction by mid 2027

INFRASTRUCTURE INVESTMENT PROGRAM WA AGRICULTURAL SUPPLY CHAIN IMPROVEMENTS – PACKAGE 1

Australian Government
Department of Infrastructure, Transport,
Regional Development and Communications





Australian Government

BUILDING OUR FUTURE

Infrastructure Investment Program

Wanneroo Road - Dunstan Road to Romeo Road - Duplication

Western Australia

Australian Government funding: \$7.6 million

Western Australian Government contribution: \$7.6 million
Total: \$15.2 million

Project description

The project will duplicate Wanneroo Road from Dunstan Road to south of Romeo Road and Karoborup Road. Duplication of Wanneroo Road will improve connectivity in the northern suburbs, support the expansion of Perth's fast growing outer northern suburbs and ensure consistency in road environment and safety standards.

Jobs supported

- This project is expected to support 20 direct and indirect jobs based on Australian Government estimates

Project benefits

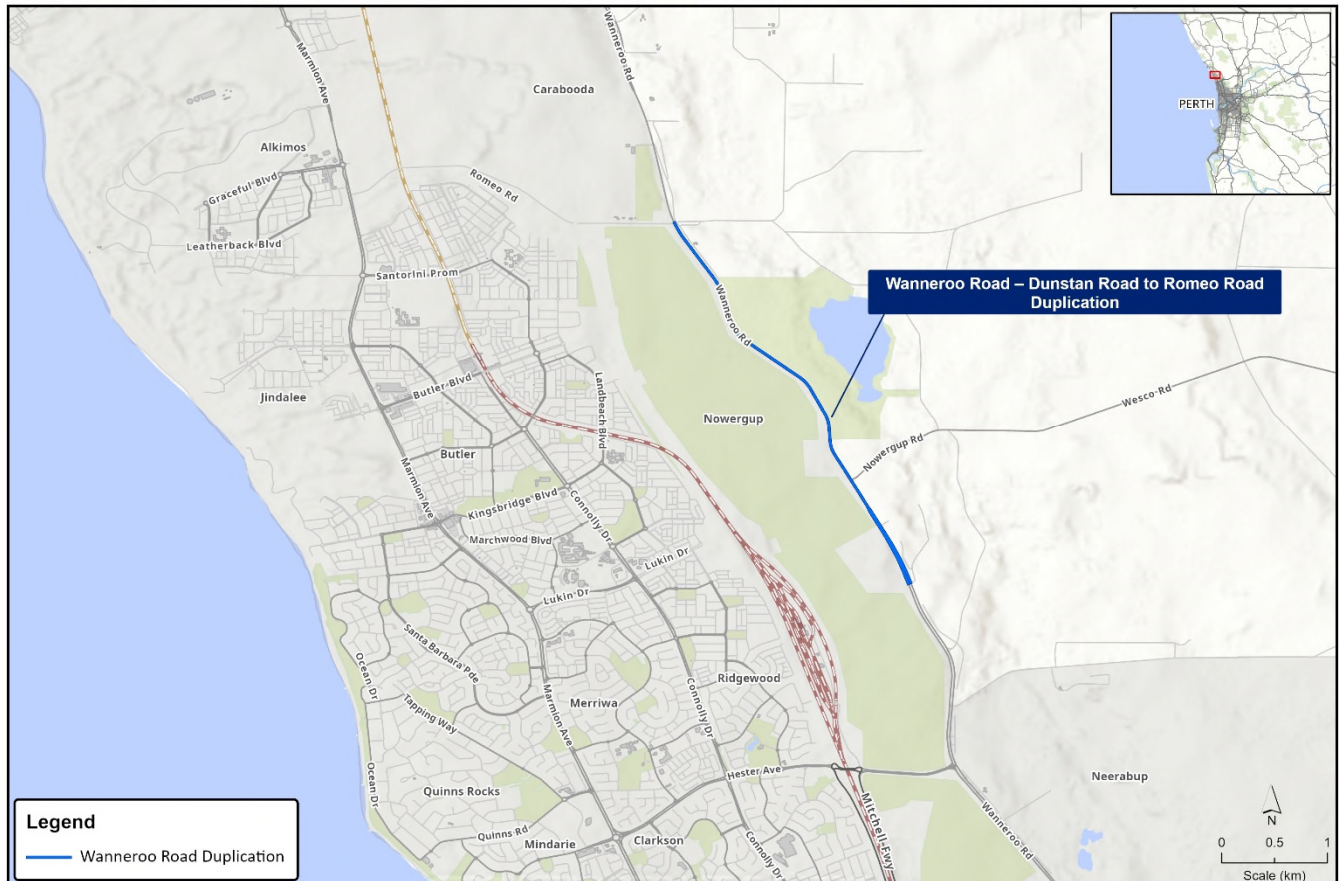
- Improved road safety for all road users
- Reduced congestion and improved travel times
- Improved efficiency and network reliability
- Improved freight productivity

Project timelines

- This project is expected to start construction in mid 2022 and be finished construction by mid 2024

INFRASTRUCTURE INVESTMENT PROGRAM WANNEROO ROAD – DUNSTAN ROAD TO ROMEO ROAD - DUPLICATION

Australian Government
Department of Infrastructure, Transport,
Regional Development and Communications





Australian Government

BUILDING OUR FUTURE

Infrastructure Investment Program

Wanneroo Road and Joondalup Drive Interchange

Western Australia

Australian Government funding: \$46.0 million

This includes \$6.0 million of additional funding provided in the 2021-22 Budget
Western Australian Government contribution: \$16.0 million

Total: \$62.0 million

Project description

The project constructed a grade separation at the intersection of Wanneroo Road and Joondalup Drive.

Both Wanneroo Road and Joondalup Drive are major distributor roads servicing urban areas in the north-west corridor, the Neerabup Industrial Area, and coastal communities between Perth and Lancelin. The intersection was previously considered the sixth most congested in the Perth metropolitan region. Completion of the project has reduced congestion and improved safety by providing safe and efficient road access and amenity for road users and the local community.

Jobs supported

- This project supported approximately 280 direct and indirect jobs

Project benefits

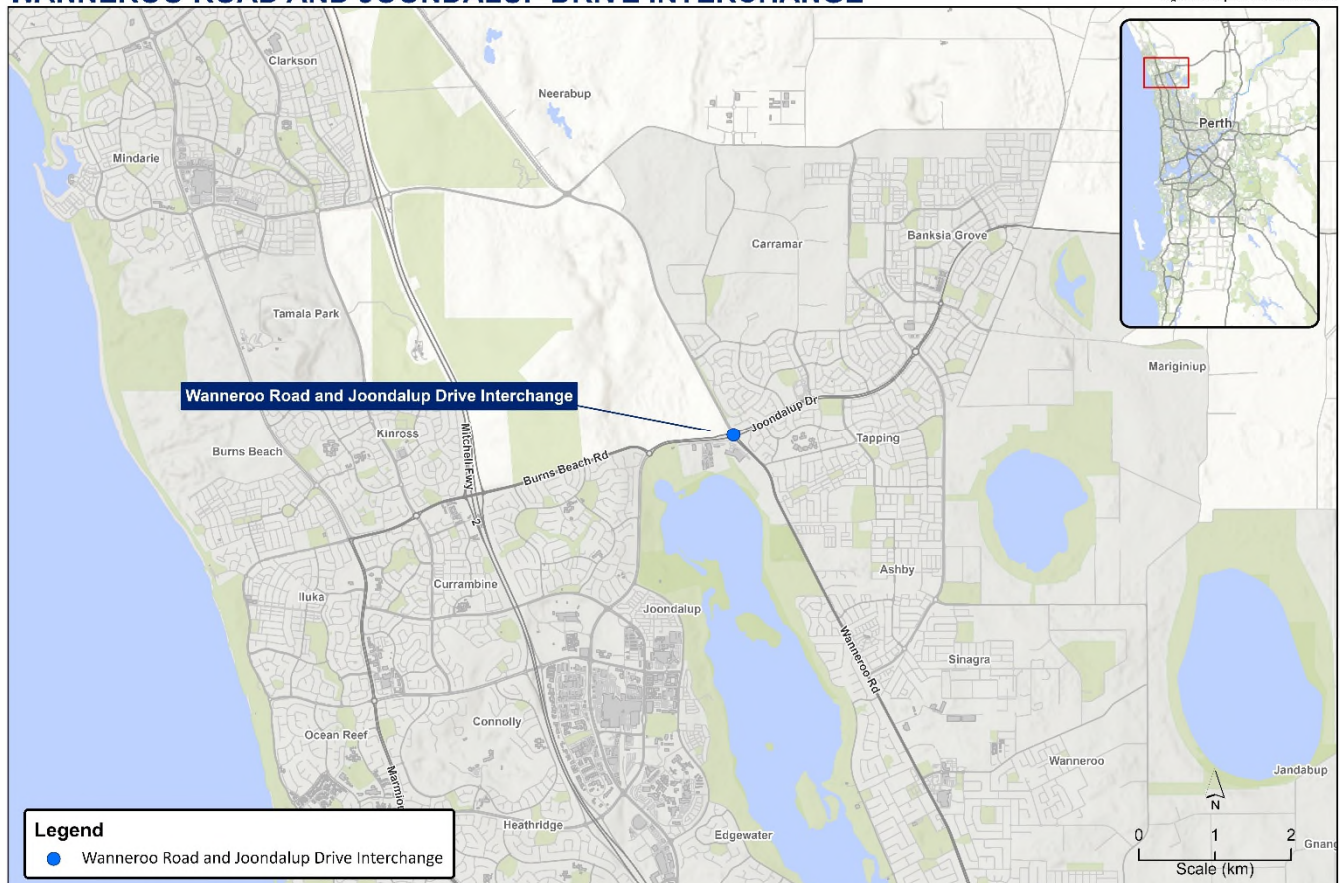
- Reduced congestion and improved travel times
- Improved road safety for all road users
- Improved accessibility and connectivity of road networks

Project timelines

- This project started construction in September 2018 and finished construction in December 2020

INFRASTRUCTURE INVESTMENT PROGRAM WANNEROO ROAD AND JOONDALUP DRIVE INTERCHANGE

Australian Government
Department of Infrastructure, Transport,
Regional Development and Communications





Australian Government

BUILDING OUR FUTURE

Urban Congestion Fund

Wanneroo Road-Morley Drive intersection upgrade, Balcatta

Western Australia

Australian Government funding: \$10.0 million

This includes \$2.5 million of additional funding provided in the 2021-22 Budget
Western Australian Government contribution: \$10.0 million

Total: \$20.0 million

Project description

The project will upgrade the intersection at Wanneroo Road and Morley Drive, Balcatta to improve traffic flow, reduce congestion and minimise the risk of accidents occurring.

The Wanneroo Road - Morley Drive Intersection has been identified as the third worst intersection in the Perth metropolitan area for congestion and frequency of crashes. The intersection also has a high volume of public transport (bus) movements throughout the day, with peak period performance being impacted heavily by congestion. The project upgrade will alleviate traffic congestion as well as improving safety and accessibility for both roads users and pedestrians.

Jobs supported

- This project is expected to support 90 direct and indirect jobs

Project benefits

- Improved road safety for all road users
- Reduced congestion and improved travel times

Project timelines

- This project is expected to start in late 2021 and be finished by mid 2022

INFRASTRUCTURE INVESTMENT PROGRAM WANNEROO ROAD - MORLEY DRIVE INTERSECTION UPGRADE, BALCATT

Australian Government
Department of Infrastructure, Transport,
Regional Development and Communications

