

# *berkeley lathe*



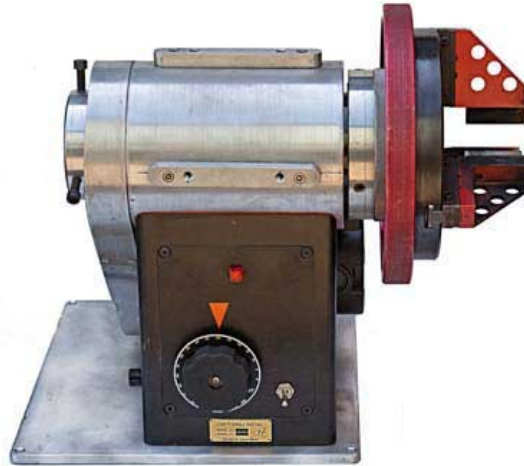
Dan Granett, Pres.  
contact dan(at)glasslathe(dot)com

**I'M SELLING THE COMPANY !**

See the lathe in operation:  
<https://vimeo.com/77011112>

<http://glasslathe.com/>

## An elegant glass working tool for the new economy



**I have designed, built and sold a half dozen of these lathes to very happy glassblowers.  
I wish to sell the company and move on to other projects.  
Here's a chance to compete favorably with Litton and their pricey single head lathe.**

Berkeley Lathe has been profitably marketing the SH-1 at a substantial discount to the Litton.

See: <http://glasslathe.com/>

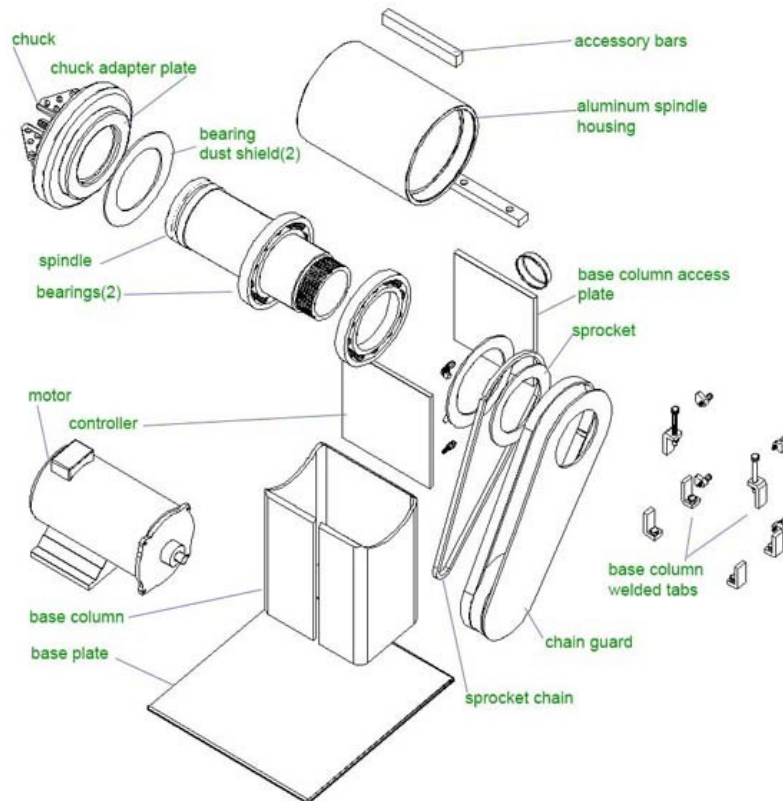
The SH-1 has a larger bore (69mm) and better vertical clearance above the bench.  
It accepts all HSA Litton type chucks.

We will supply all part and material sources, jigs, engineering drawings and parts stock.  
spindles, laser cut bodies, bearing cases and thick wall Al pipe stock,  
power supplies, electronics,  
Heavy duty scroll chucks, left and right hand  
7 almost ready-to-ship lathes

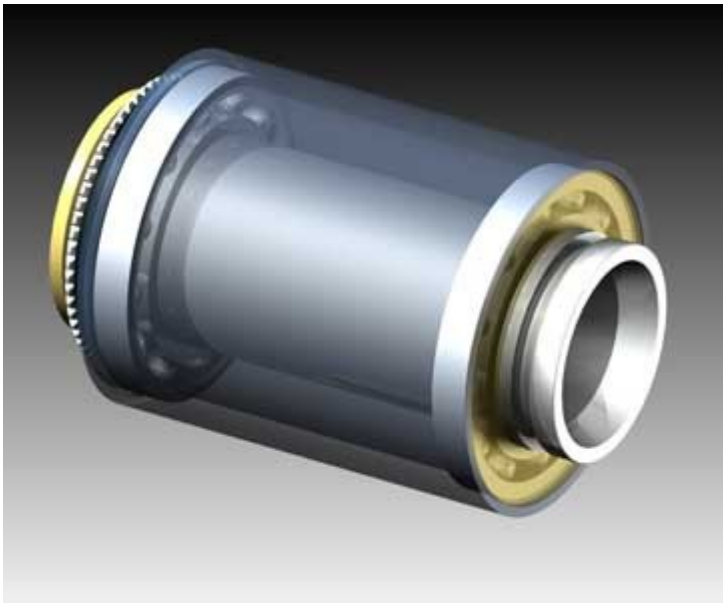
Assembly training will be offered at no cost at our Berkeley shop.  
We will transfer the domain [glasslathe.com](http://glasslathe.com) to the new owner.



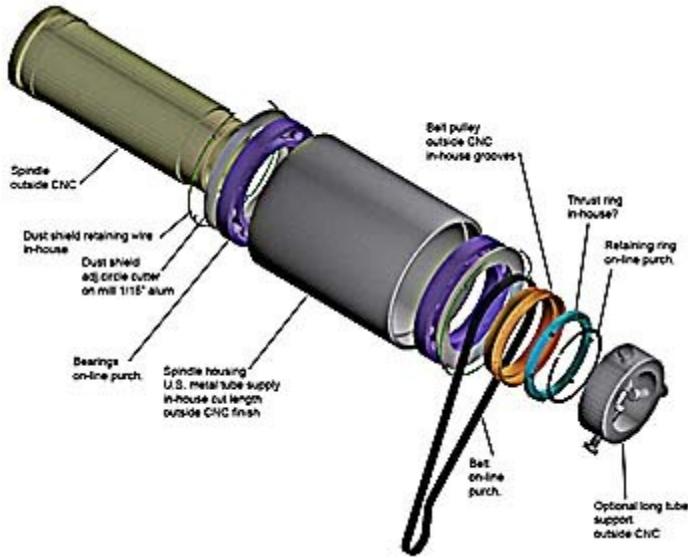
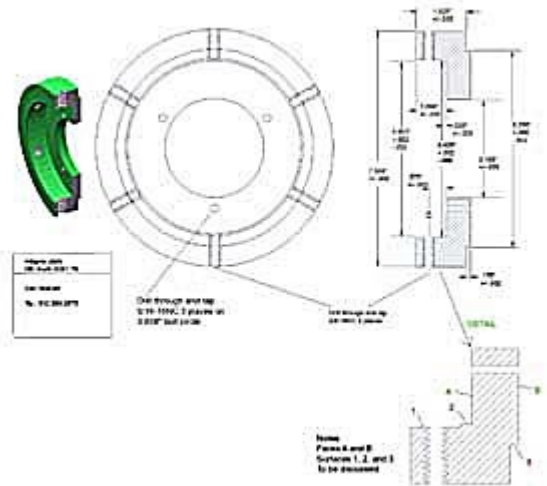
*Lathes near completion*



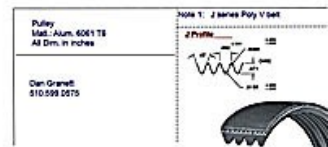
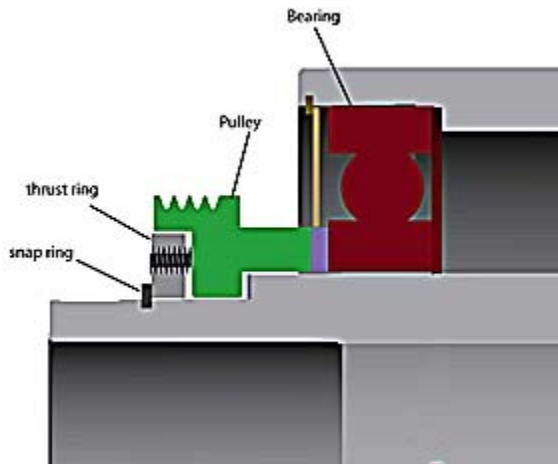
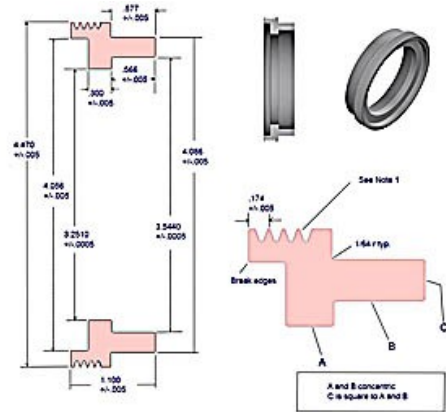
*Parts diagram*



Bearing housing

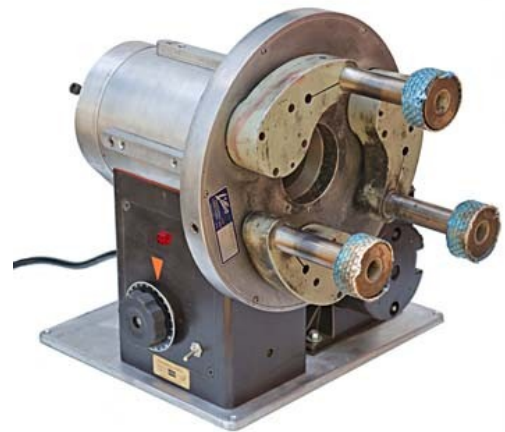
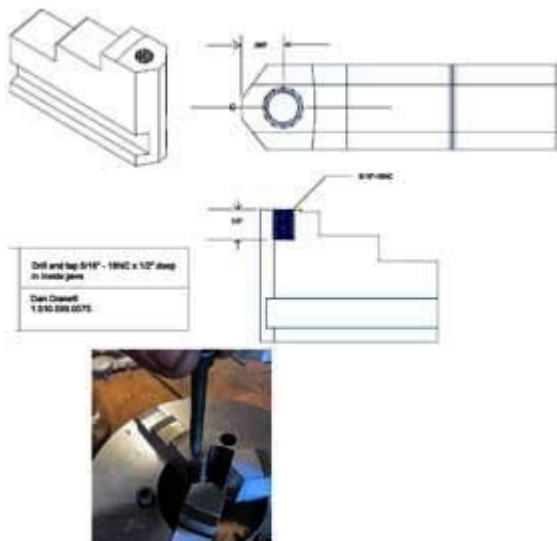


Chuck adapter





*New chucks awaiting adapter plates*



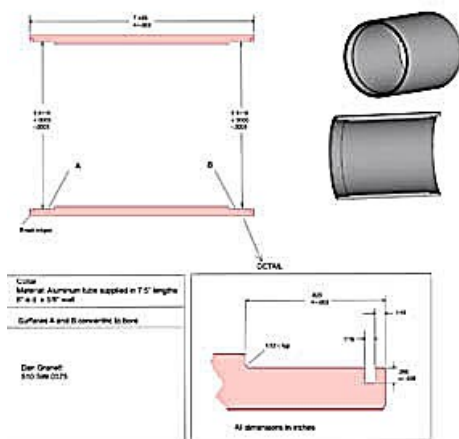
*Lathe with Litton chuck*

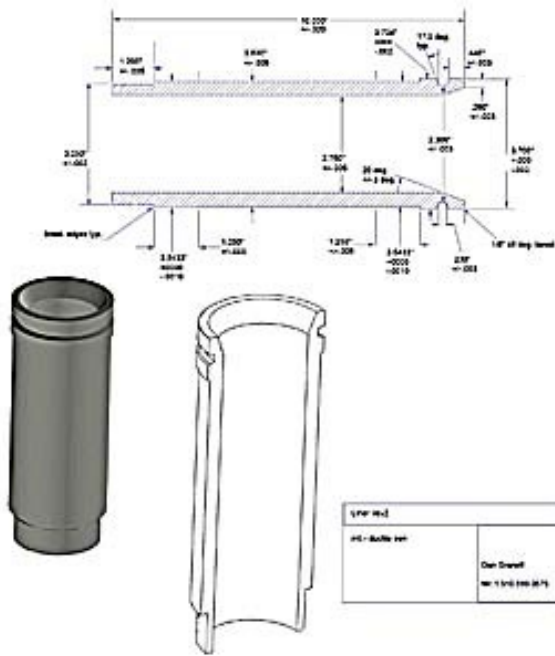


Holding a 4 liter bottle



Bearing housings ready for machining

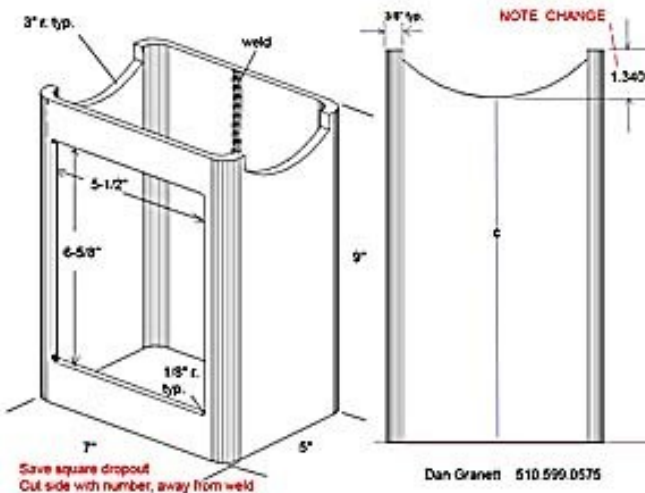




Precise spindle dimensions

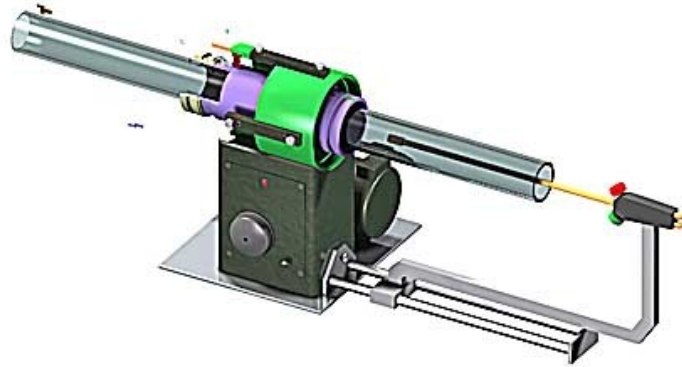


Precision CNC machined spindles



Laser cut steel tube base





*Tube cracking accessory idea*



[GLASSLATHE.COM](http://GLASSLATHE.COM)