

ARCHITECTURE PORTFOLIO

MARIAM AM AYOUB
(B.ARCH)



CONTENTS

ACADEMIA

01 M.O.D - MENTALLY ORIENTED DISABILITES CENTER (2018)

GRADUATION PROJECT

02 PLASTICITY - MUSEUM OF CONTEMPORARY VISUAL ARTS (2017)

DESIGN STUDIO VI

03 DUNES - URBAN POP-UP (2017)

04 SAADIYAT AQUA DISTRICT - URBAN DESIGN PROJECT (2017)

05 VERTICAL CITY - MIXED USE HIGH RISE BUILDING (2016)

DESIGN STUDIO V

06 ABUDHABI MEDIATHEQUE - PUBLIC MULTIMEDIA LIBRARY (2016)

DESIGN STUDIO IV

COMPETITIONS

07 DIVER-CITY - MULTI-FAMILY VERTICAL HOUSING IN THE UAE (2016)

1ST PLACE WINNER FOR THE UNDERGRADUATE STUDENT RESEARCH COMPETITION

08 QASA'ED - AN INTERACTIVE PAVILION (UNVEILED ON NOVEMBER 21, 2018)

WINNING PROPOSAL FOR THE CHRISTO AND JEANNE-CLAUDE AWARD COMPETITION 2018

01

M.O.D

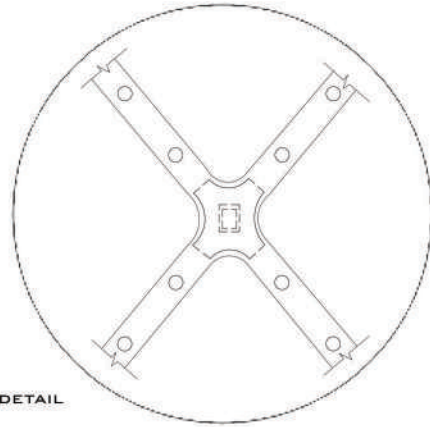
MENTALLY ORIENTED DISABILITIES CENTER

GRADUATION PROJECT, 2018

THROUGH THE CAREFUL STUDY OF TRIANGULATIONS, M.O.D IS AN ARCHITECTURE THAT IS EXTRACTED FROM THE NATURE AROUND IT TO CREATE A CRITICAL AND A MAJOR CONNECTION BETWEEN THE USERS AND NATURE. THE CREATION OF A TITANIUM COVER OVER THE FUNCTION-OCCUPIED UNITS IS TO CREATE AN IMITATION OF A GREENHOUSE EFFECT WHERE THE USERS ARE TO ENJOY THE ASPECTS OF THE SITE WITHOUT HAVING TO STRUGGLE WITH THE HIGH TEMPERATURES OF THE OUTER ATMOSPHERE

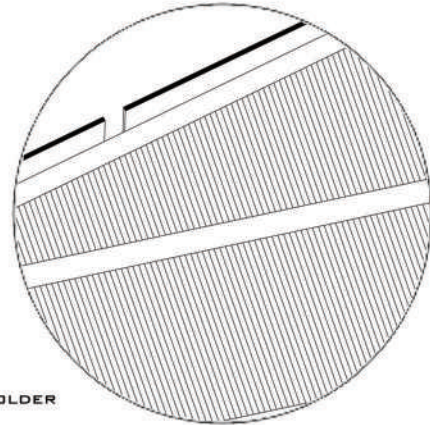


DETAILS OF THE NODES AND THE METAL SHEET RODS DEPICT THE USE OF A PURE METAL STRUCTURE AND FRAMEWORK TO CREATE AND FORM THE ENTIRE PROJECT AS THIS FRAMEWORK IS USED TO SHELTER THE INNER SPACES

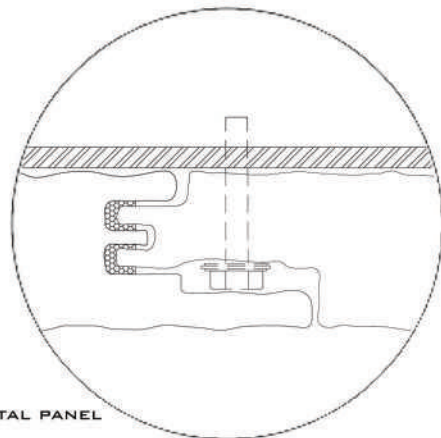


NODE DETAIL

DUE TO THE USE OF METAL SPECIFICALLY TITANIUM TO CREATE THE SHELL OF THIS PROJECT, INSULATED PANELS HAD TO BE USED TO PREVENT THE PENETRATION OF HEAT TO THE INNER SPACES, INSULATED METAL PANELS (IMP) WERE SPECIFICALLY INSERTED BETWEEN THE COATED TITANIUM SHEETS TO ENSURE THE MAXIMUM REFLECTION OF HEAT AWAY FROM THE INTERIOR AREAS



SHEET HOLDER



INSULATED METAL PANEL



FIRST FLOOR PLAN
(MEDICAL UNIT)



- 1. Main Entrance
- 2. Reception
- 3. Conference rooms
- 4. Offices
- 5. Waiting area

- 6. Library
- 7. Residential [single unit]
- 8. Nursing station
- 9. Storage area
- 10. Residential [double unit]

- 11. Dining area
- 12. Dayrooms
- 13. Cafe
- 14. Toilets
- 15. Gift shop

- 16. Emergency entrance
- 17. Recovery unit
- 18. Surgery unit
- 19. Examination rooms
- 20. Group Therapy room

- 21. Consultation offices
- 22. X-ray rooms
- 23. Dark rooms
- 24. Control rooms
- 25. Family Therapy room

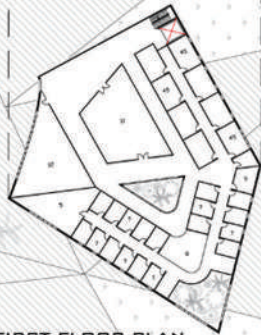
- 26. Blood Sample room
- 27. Contemporary Lab unit
- 28. Research uUnit entrance
- 29. Research labs
- 30. Safety Storage room

- 31. Technical rooms
- 32. Research Support areas
- 33. Viewing Sector
- 34. Outdoor Seating area
- 35. Sound Therapy rooms

- 36. Manual workshop
- 37. Animal Interaction zone
- 38. Greenary workshop
- 29. Cafeteria
- 40. Recreation Therapy rooms

- 41. Gym
- 42. Multi-Functional area
- 43. Staff offices
- 44. Staff Break room
- 45. Staff Residential

FIRST FLOOR PLAN
(INPATIENT UNIT)



MATERIALITY AND COLOR PALATTE



BRIGHT GREEN & PURPLE
[PLANTS & FLOWERS]
FOUND IN SITE



LIGHT BROWN
[PLANTS]
FOUND IN SITE



BRIGHT GREEN
[GRASS]
FOUND IN SITE



PALE GREEN
[GHAF TREE]
FOUND IN PLOT - 1 ELEMENT



WHITE
[FLOWERS]
FOUND IN SITE



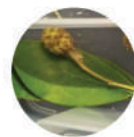
BLACK
[MOUNTAIN ROCKS]
FOUND IN SITE



LIGHT BROWN
[SAND AND PEBBLES]
FOUND IN PLOT



BRIGHT BROWN
[PURE SAND]
FOUND IN PLOT

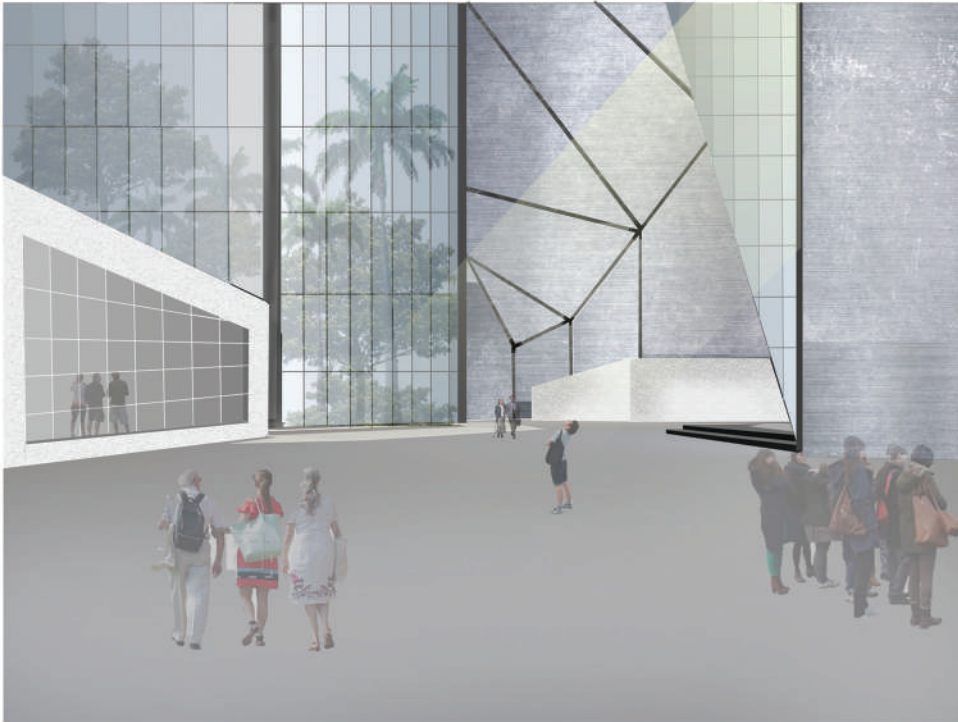


BRIGHT GREEN AND YELLOW
[FLOWERS & PLANTS]
FOUND IN SITE



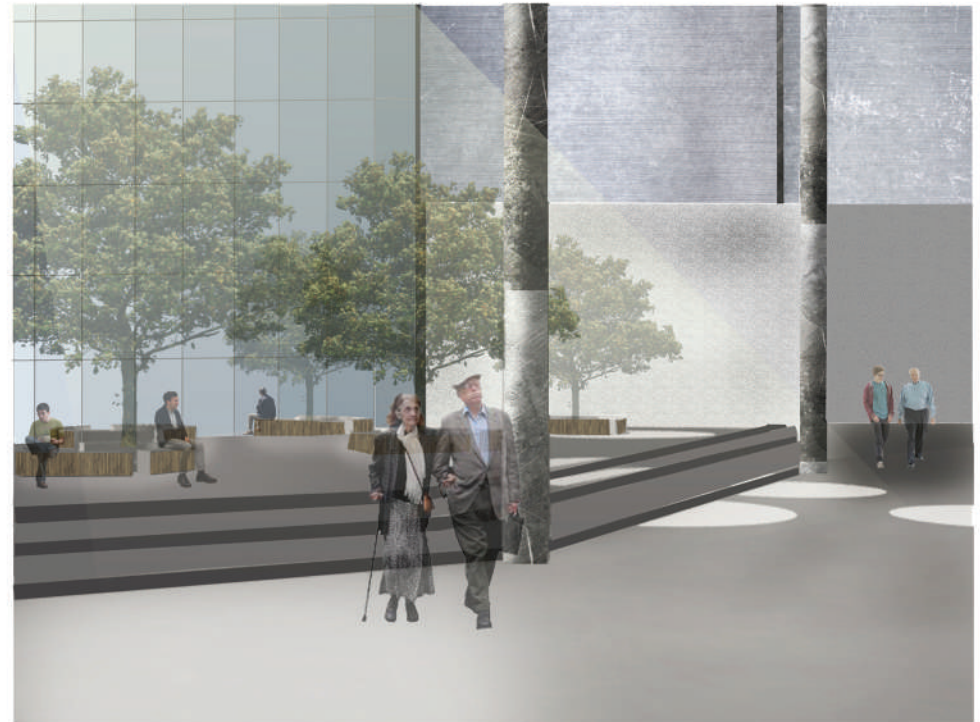
WHITE
[LAND ROCKS]
FOUND IN SITE





MAIN COURTYARD

THIS AREA DEPICTS THE VEGETATION PLACED IN THE MIDDLE OF THE CENTER TO ACT AS A FOCAL AND REFERENCE POINT TO THE USERS



WAITING AREA

INTEGRATING NATURE INTO THE USUALLY STANDARD AREAS WITH AN ADDITION OF TRANSPARENCY FOR LIGHT PENETRATION ENHANCES THE ATMOSPHERE OF THE SPACE



ANIMAL INTERACTION

HAVING A PHYSICAL CONTACT WITH ANIMALS HAS ALWAYS BEEN A POSITIVE POINT TO PROVIDE FOR MENTALLY DISABLED PATIENTS AS IT HELPS IN THEIR TREATMENTS AND THERAPY



SECONDARY COURTYARDS

A PRIORITY IN THIS CENTER IS THE EQUAL DISTRIBUTION OF SPACES AND NATURE TO ELIMINATE ANY BARRIERS BETWEEN THE GREEN SITE AND THE INTERIOR SPACES

02

PLASTICITY

MUSEUM OF CONTEMPORARY VISUAL ARTS

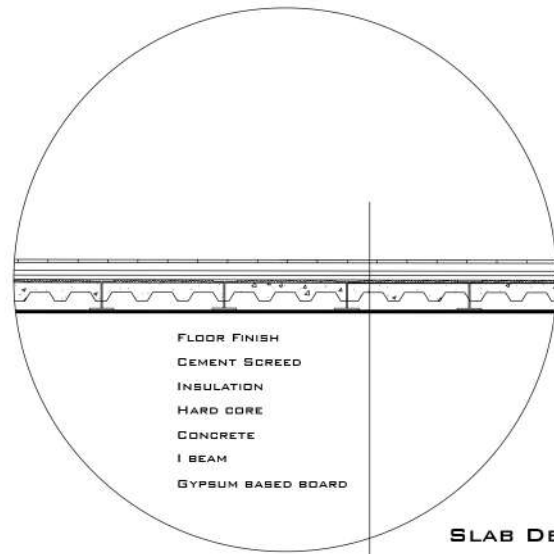
DESIGN STUDIO VI, 2017

THIS PROJECT REVOLVES AROUND THE USE OF TOPOLOGY IN AN ARCHITECTURAL MANNER WHERE ALL ELEMENTS WOULD MERGE TOGETHER TO FORM A FUSION OF SHARED SPACES AND INTERLOCKING AREAS. SPACE IS NO LONGER REGARDED AS A VOID BUT AS A SUBSTANCE THAT DEFINES THE TOPOLOGICAL MEDIUM

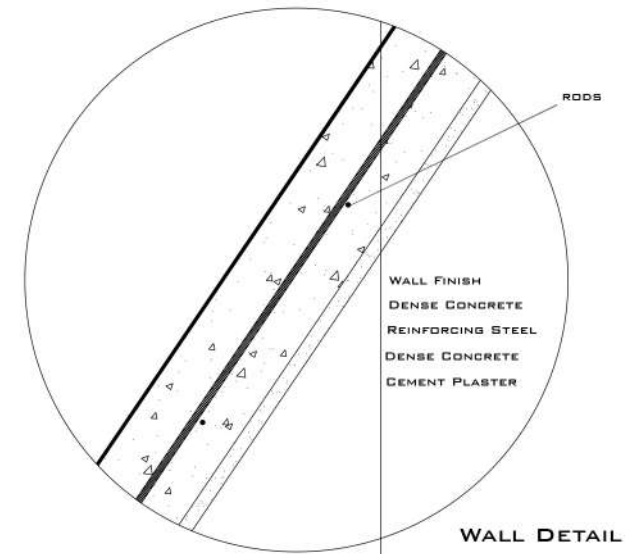


SECTION A'A

THE SOLIDITY AND THE FLEXIBILITY OF CONCRETE ARE BOTH TESTED IN THIS PROJECT AS SECTIONS OF THE STRUCTURE ARE PURELY HELD THROUGH THE REINFORCEMENT AND THICKNESS OF THE CONCRETE WHILE OTHER PARTS ARE MOLDED INTO CURVATURES SHOWING THE OPTIMUM FLEXIBILITY OF CONCRETE AS A MATERIAL



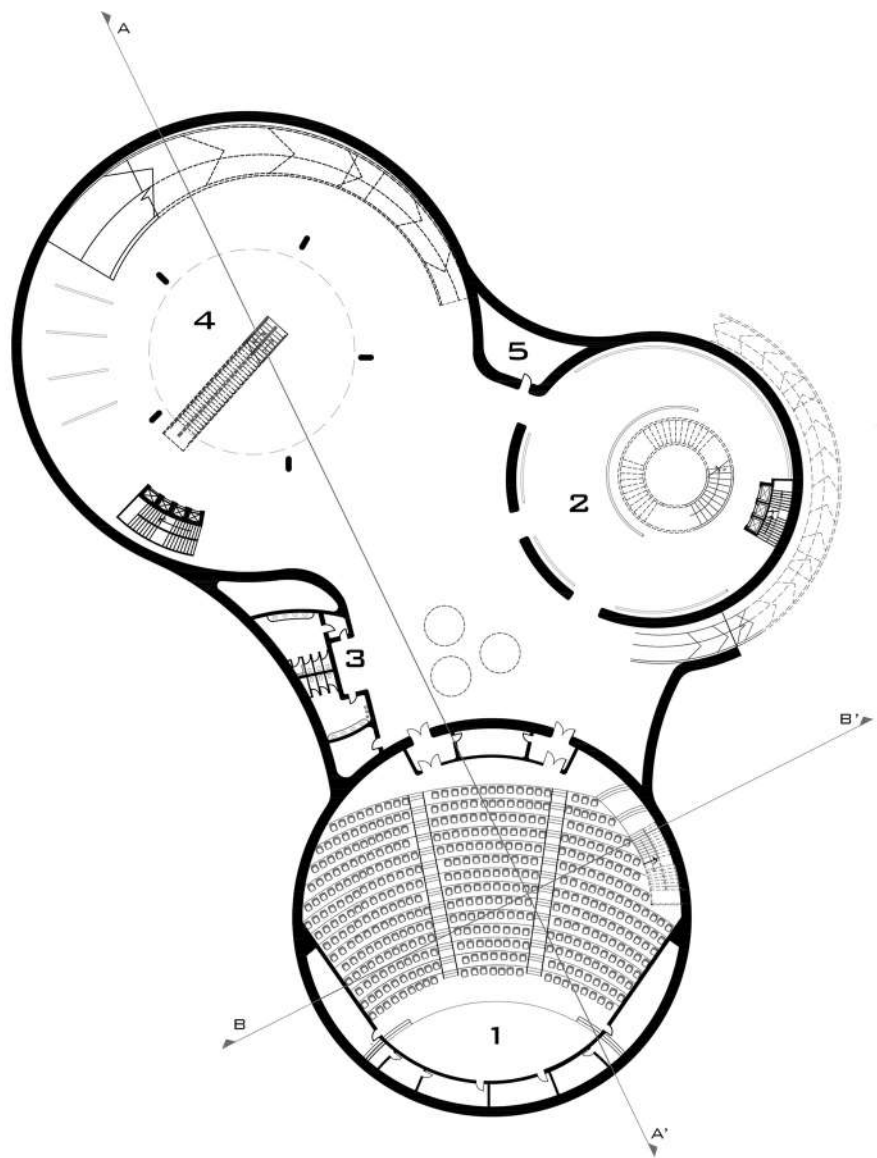
SLAB DETAIL



WALL DETAIL

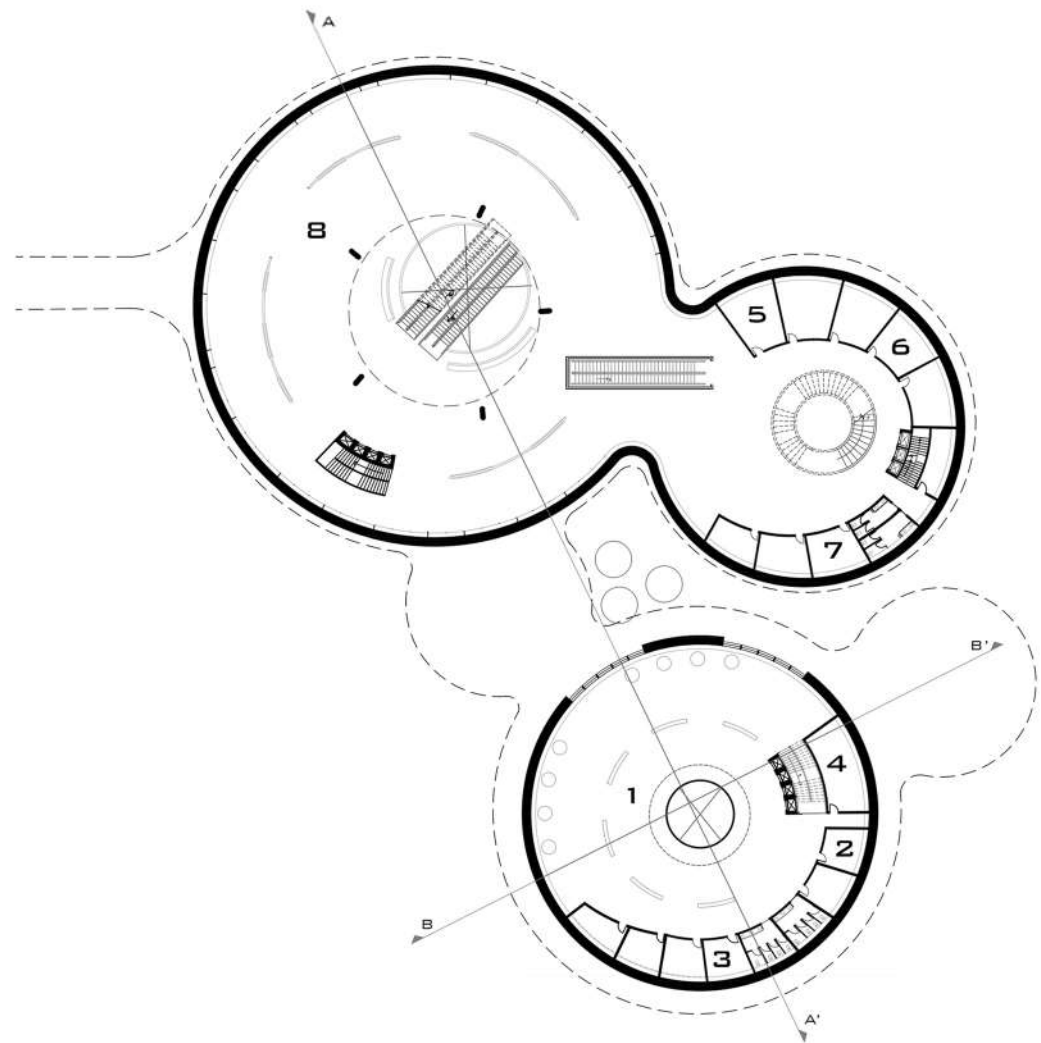


SECTION B'B



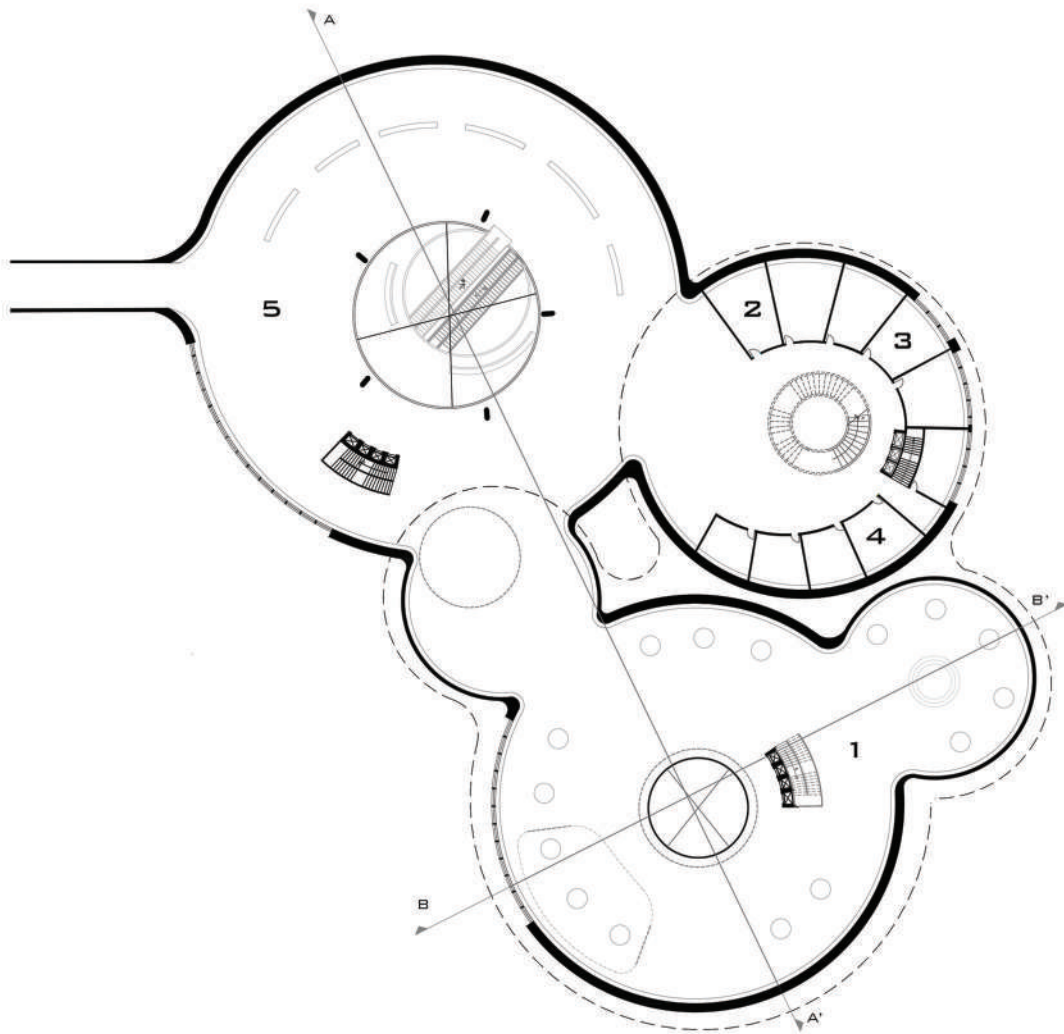
- 1. AUDITORIUM
- 2. DIGITAL ARTS SPACE
- 3. RESTROOM
- 4. PERMENANT EXHIBITION SPACE
- 5. STORAGE

UNDERGROUND FLOOR PLAN



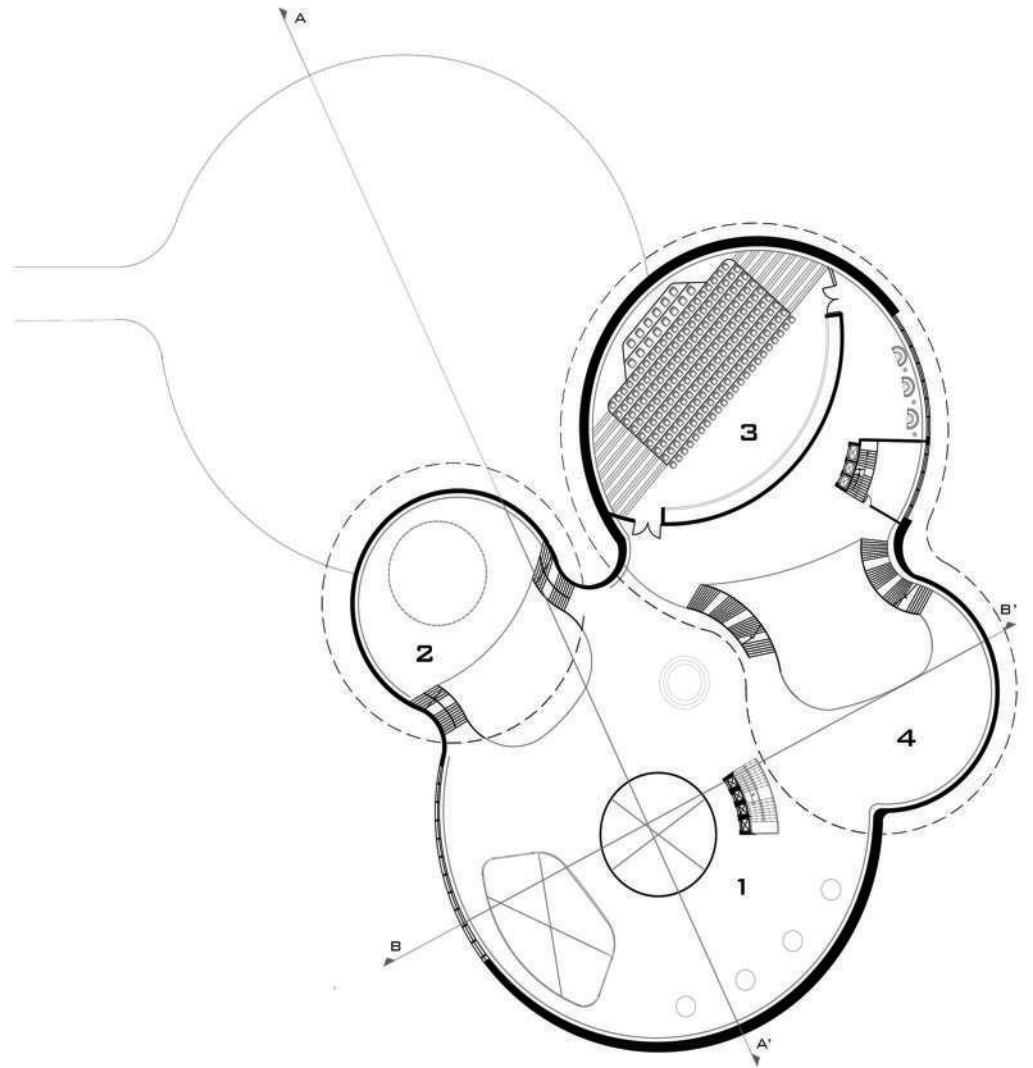
- 1. PHOTOGRAPHY SPACE
- 2. STORAGE
- 3. DARK ROOM
- 4. MECHANICAL ROOM
- 5. EDUCATIONAL ROOM
- 6. WORKSHOP
- 7. STORAGE
- 8. PAINTING SPACE

FIRST FLOOR PLAN



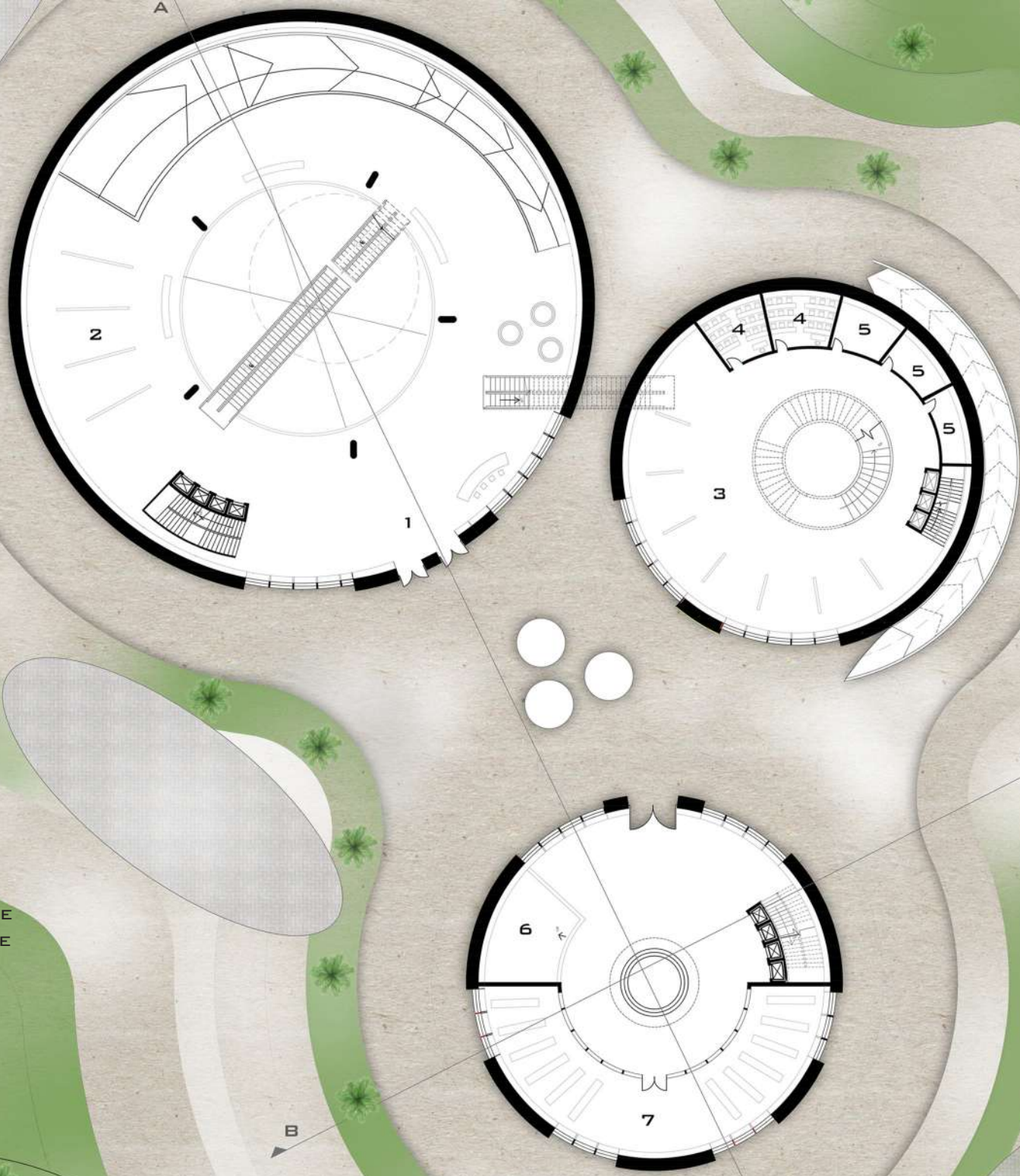
- 1. SCULPTING SPACE
- 2. EDUCATIONAL ROOM
- 3. WORKSHOP
- 4. STORAGE
- 5. PUBLIC GATHERING SPACE

SECOND FLOOR PLAN



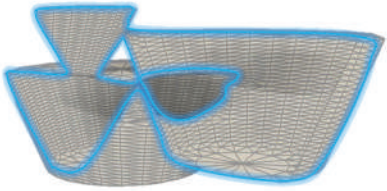
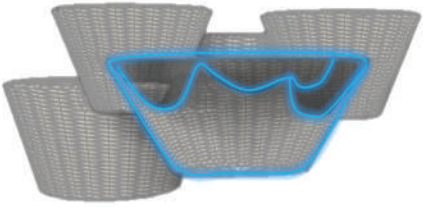
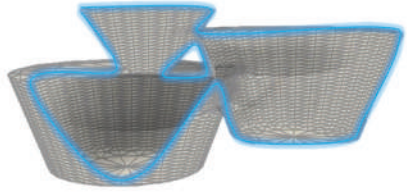
- 1. SCULPTING SPACE
- 2. COMBINED GALLERY
- 3. CINEMA
- 4. PUBLIC SPACE

THIRD FLOOR PLAN

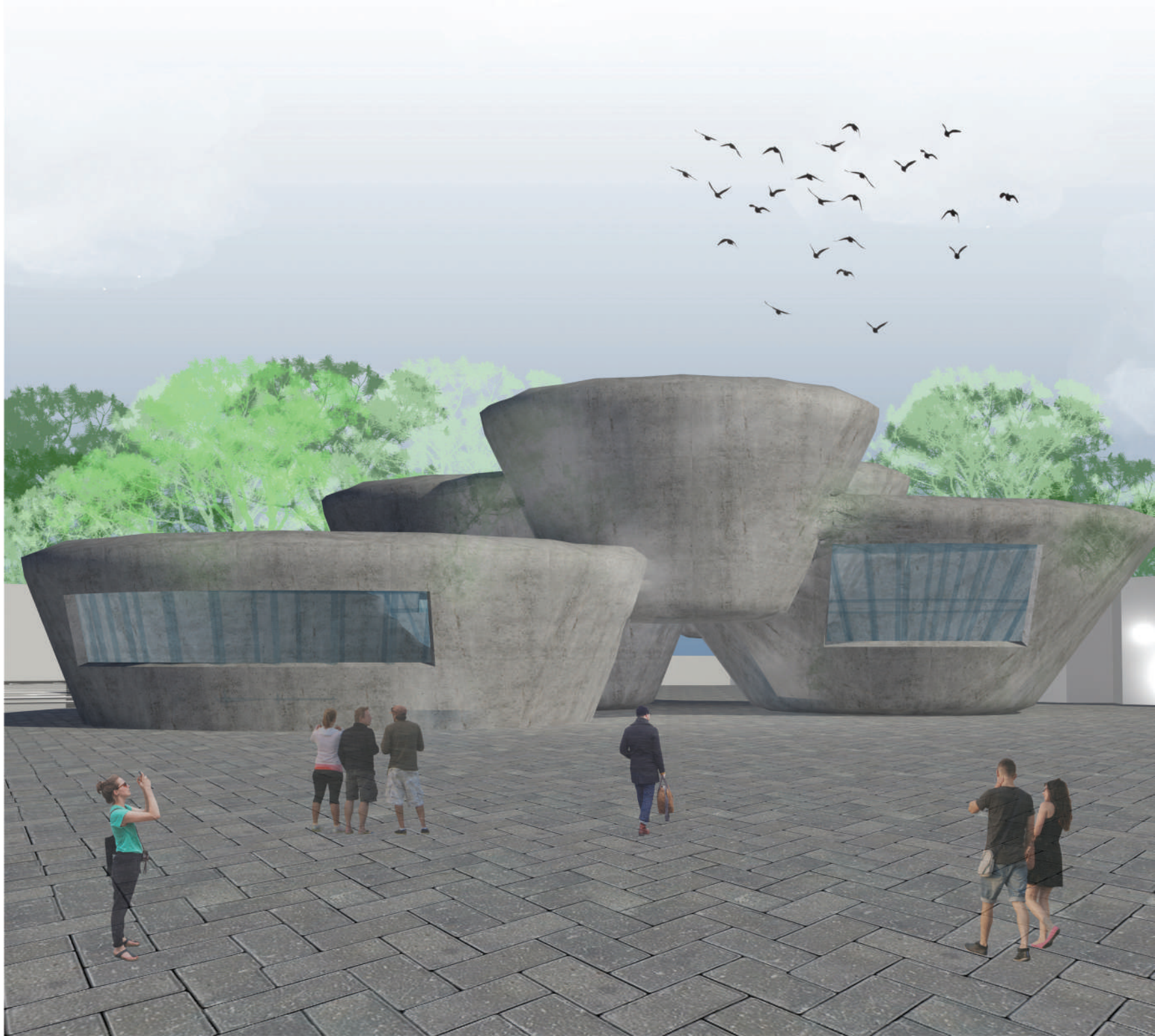


- 1. MAIN ENTRANCE
- 2. PERMENANT EXHIBITION SPACE
- 3. TEMPORARY EXHIBITON SPACE
- 4. EDUCATIONAL ROOM
- 5. STORAGE
- 6. COLLABORATIVE AREA
- 7. LIBRARY

GROUND FLOOR PLAN



**A HUMAN'S PERSPECTIVE RENDER
TO SHOW THE WAY THE USERS AND
NATURE WILL INTERACT WITH THE
BUILDING**



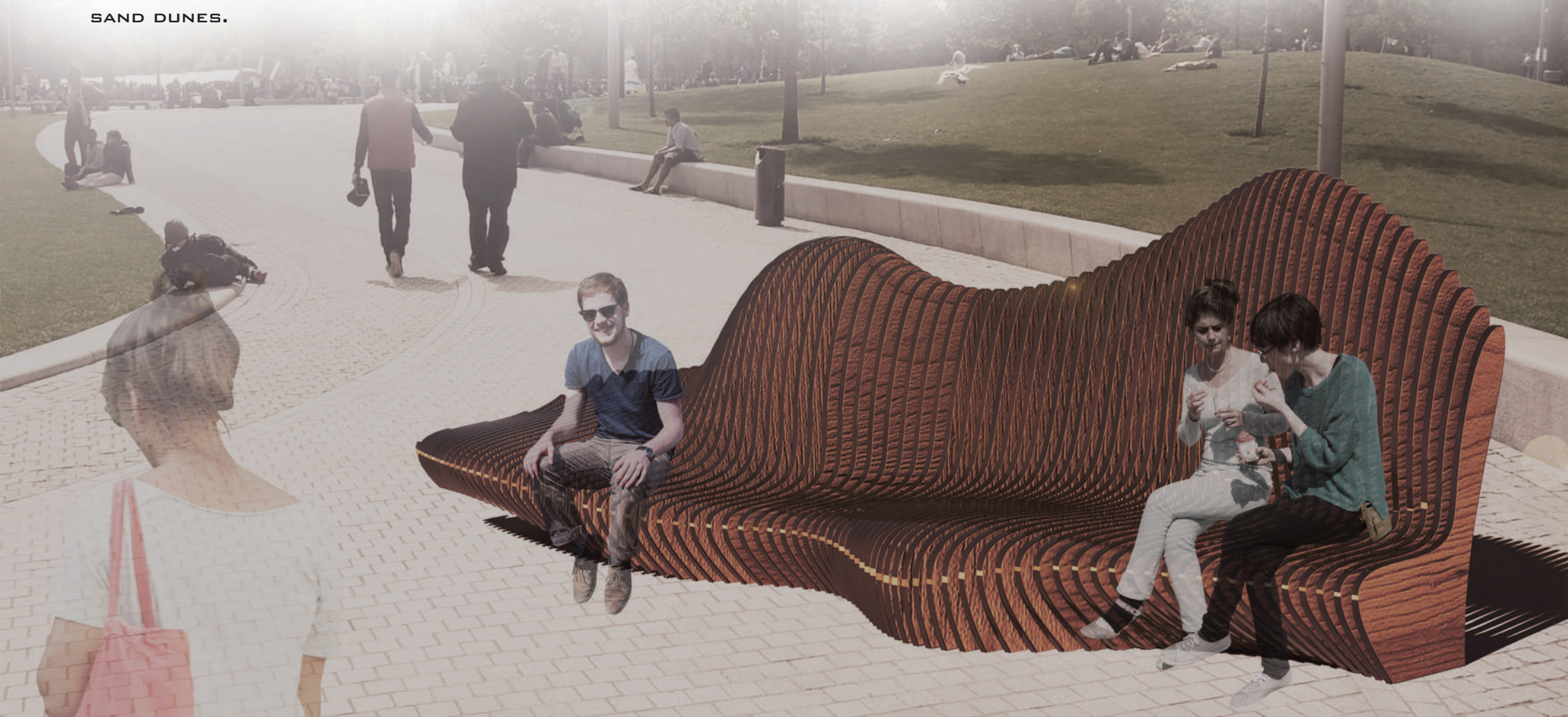
03

DUNES

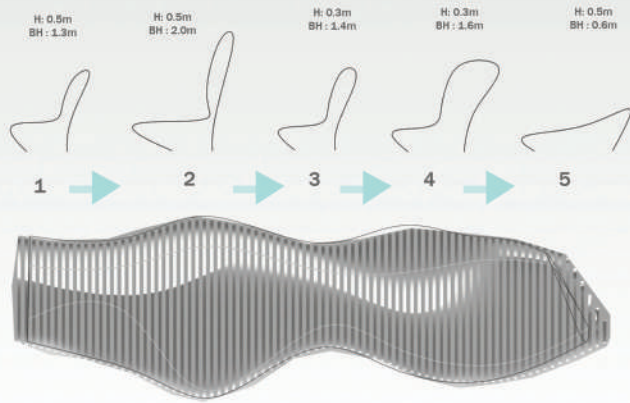
URBAN POP-UP

2017 - GROUP PROJECT

DUNES, A DESIGN THAT COPEs WITH THE DIFFERENT NEEDS OF THE USERS. IT IS A BENCH THAT CHANGES ITS SHAPE SIMULTANEOUSLY TO ACCOMMODATE KIDS, ADULTS AND THE HANDICAPPED BY PROVIDING A DIFFERENT SEATING POSITION. IT IS A COMMUNAL SEATING STRUCTURE THAT IS INSPIRED BY THE LOCAL GEOGRAPHY OF THE UNITED ARAB EMIRATES THAT IS WELL-KNOWN FOR ITS BEAUTIFUL SAND DUNES.



SCHEME EVOLUTION

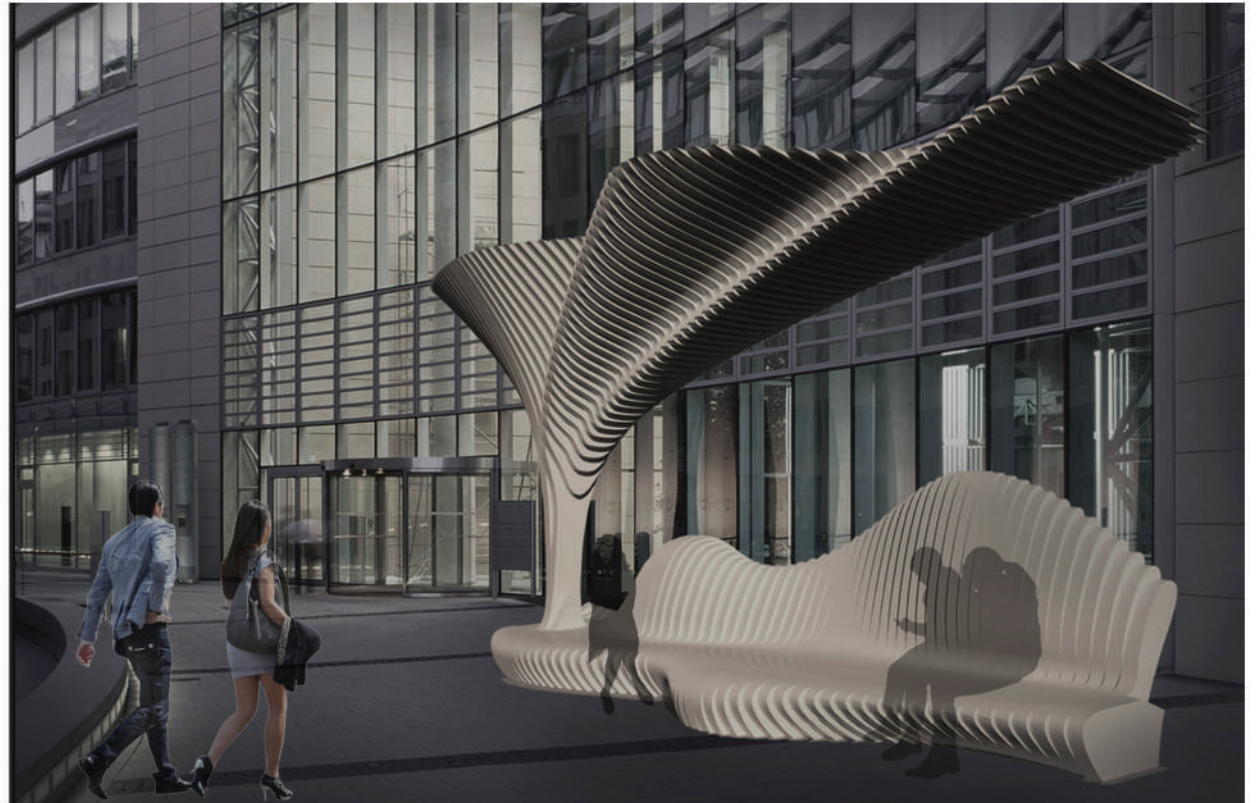


DIAGRAMS



TOP VIEW

1. THE START OF A NORMAL SEAT
2. LONGER SEAT SUITABLE FOR ADULTS
3. SMALLER SEAT SUITABLE FOR KIDS
4. SEAT SUITBLE FOR LAYING DOWN







DUNES
LASER CUT MODEL

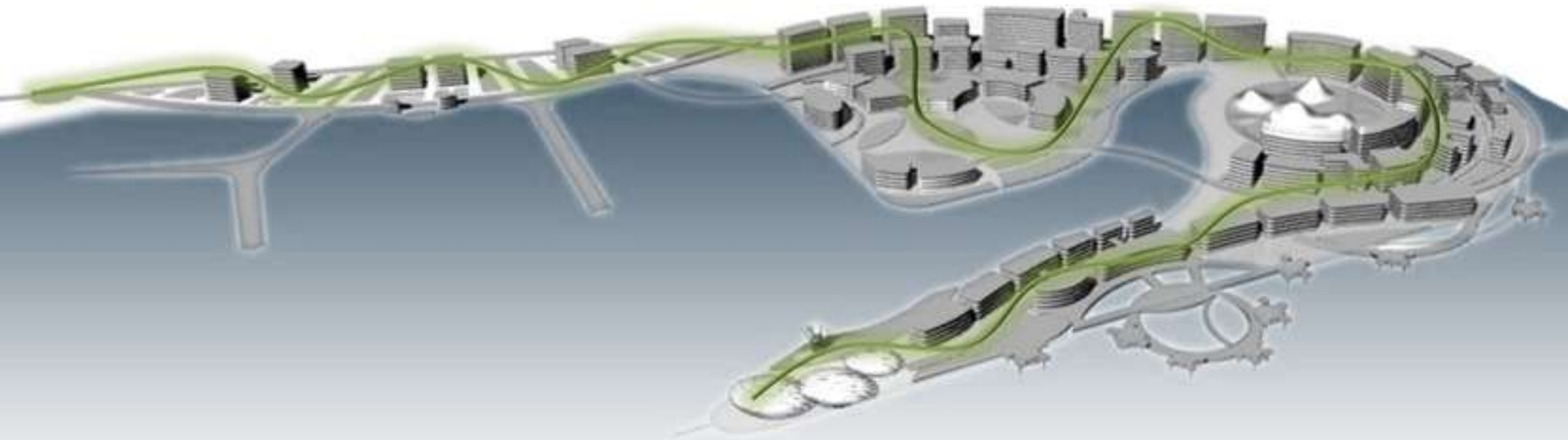
MODELING SOFTWARE: RHINOCEROS
CUTTING SOFTWARE: SLICER FOR FUSION 360

04 SAADIYAT AQUA DISTRICT

URBAN DESIGN

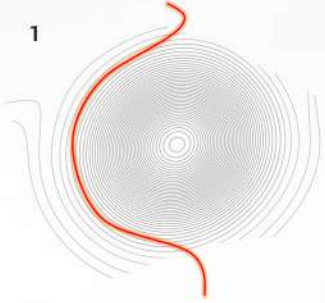
2017 - GROUP PROJECT

THE IDEOLOGY FOLLOWED WHEN PLANNING THE SITE WAS TO CREATE A CONTINUITY BETWEEN ALL ELEMENTS REGARDLESS OF THEIR TYPE. ALL BUILDINGS ARE TO FLOW AS ONE UNIT, MIMICKING A WAVE FORMATION AND THIS RELATES TO THE INITIAL CONCEPT WHOSE GRID WAS INSPIRED BY THE WATER RIPPLES. IT IS IMPORTANT THAT THE FLUIDITY OF THE PROJECT IS FELT AND EXPERIENCED BY THE USERS HENCE THE DRIVE TO CREATE PEDISTRIAN BRIDGES AND CONNECTED PATHWAYS ALL AROUND THE SITE.

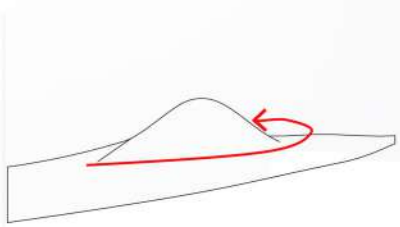


HIGH TOPOGRAPHY ACCESS

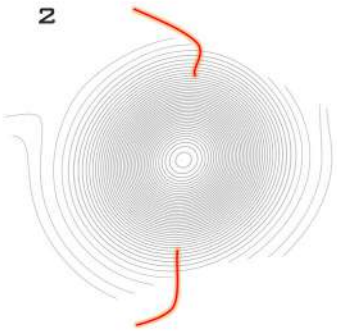
1



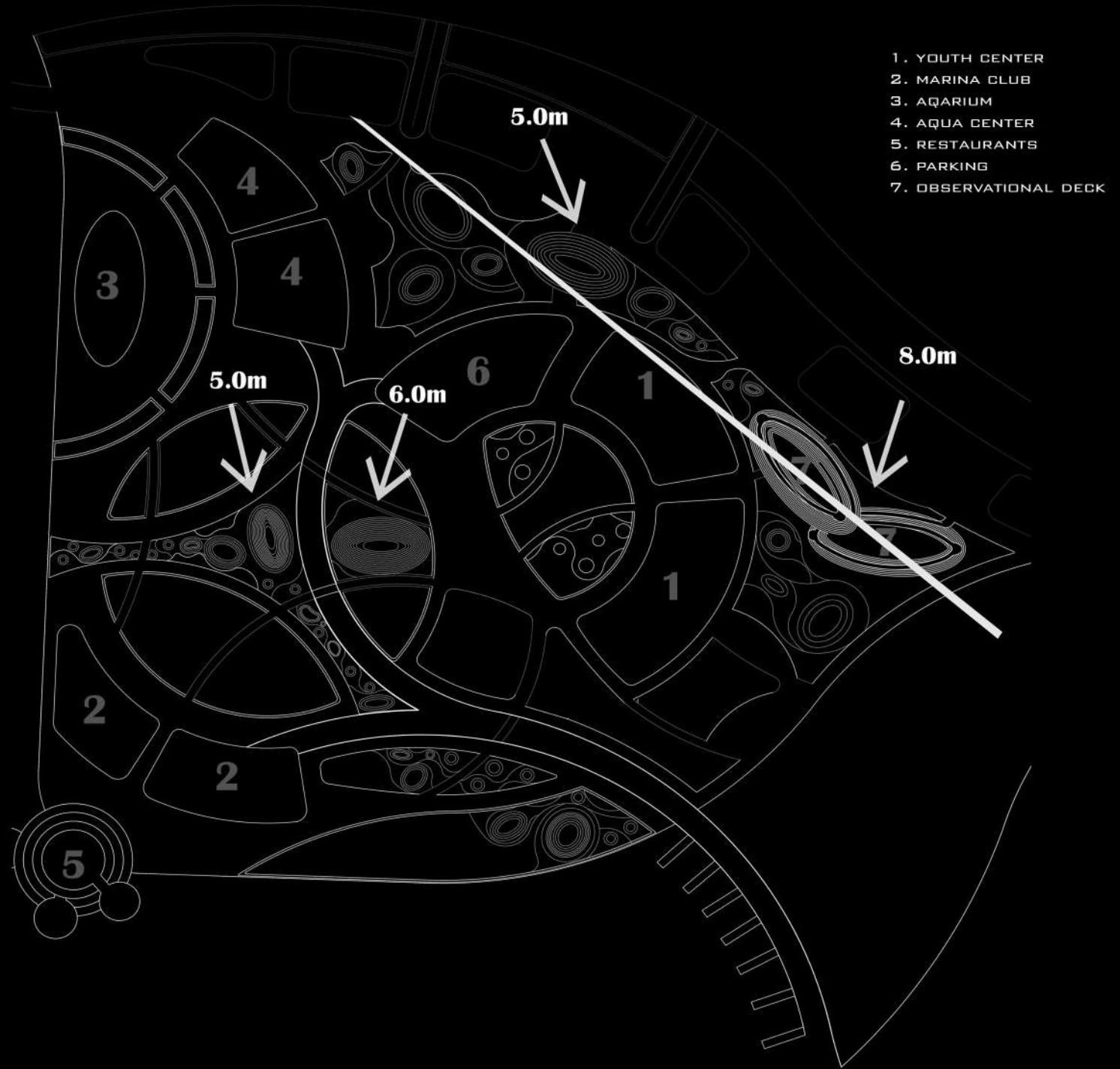
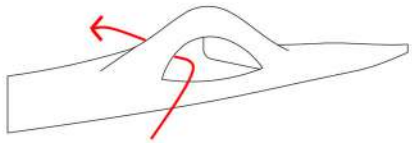
AROUND THE TOPOGRAPHY



2

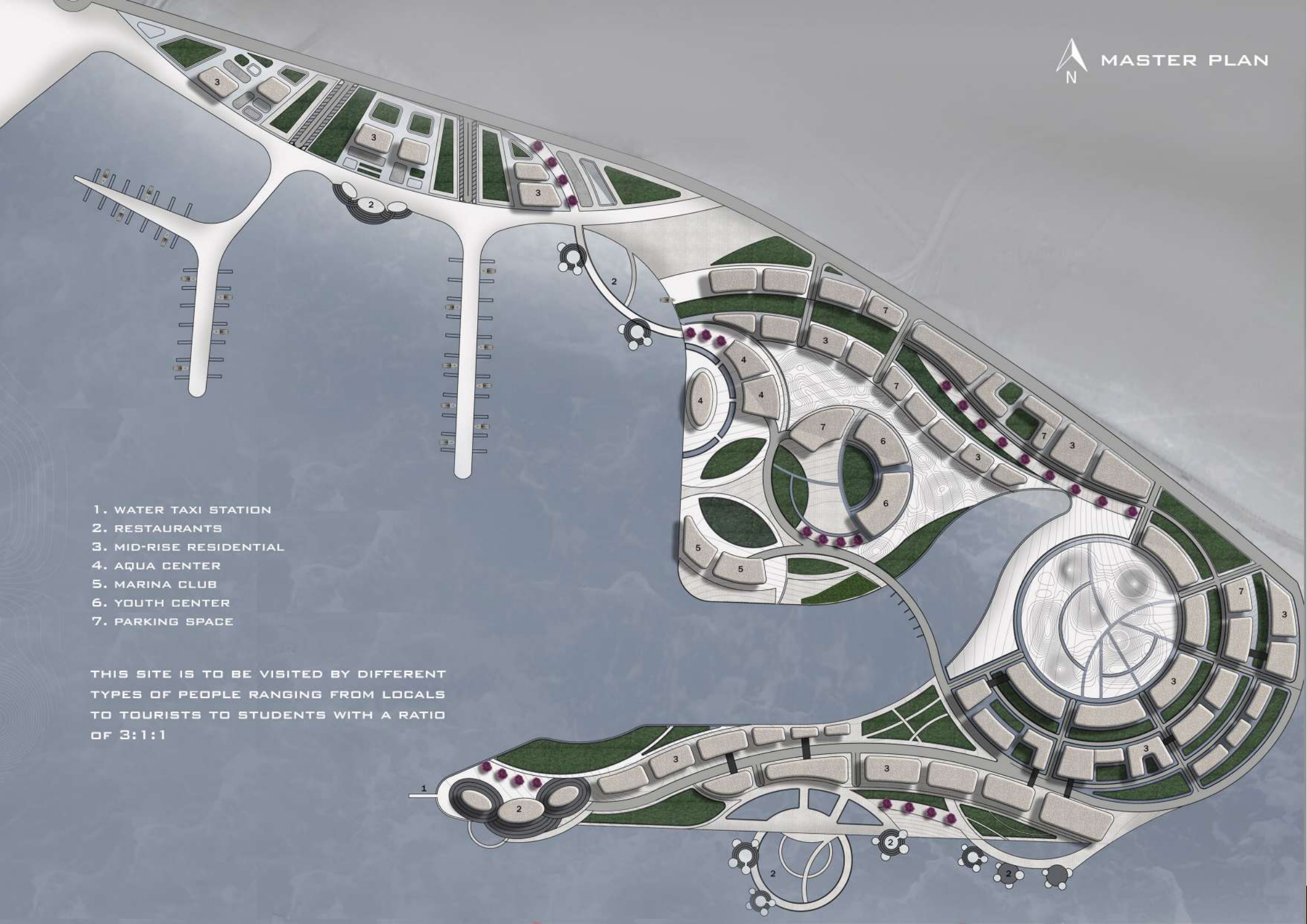


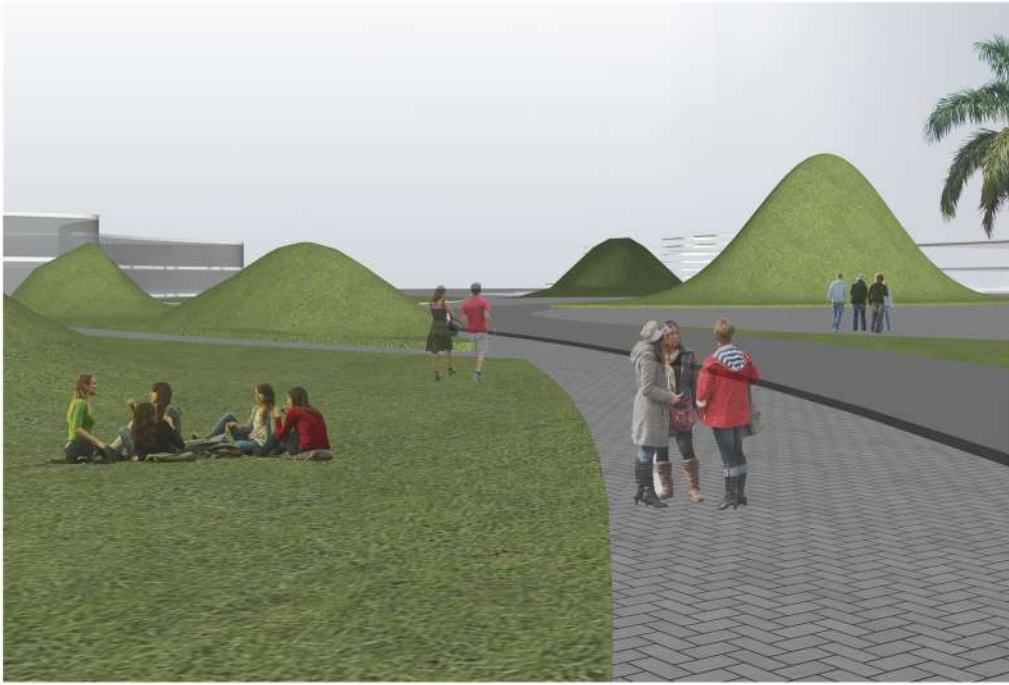
THROUGH THE TOPOGRAPHY



- 1. WATER TAXI STATION
- 2. RESTAURANTS
- 3. MID-RISE RESIDENTIAL
- 4. AQUA CENTER
- 5. MARINA CLUB
- 6. YOUTH CENTER
- 7. PARKING SPACE

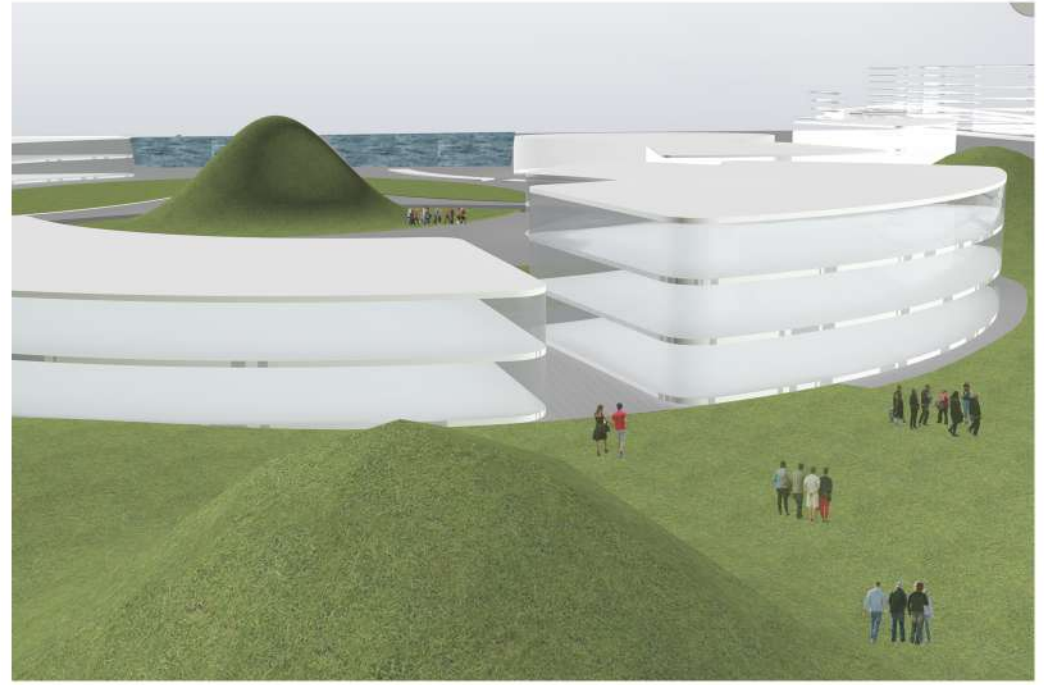
THIS SITE IS TO BE VISITED BY DIFFERENT TYPES OF PEOPLE RANGING FROM LOCALS TO TOURISTS TO STUDENTS WITH A RATIO OF 3:1:1





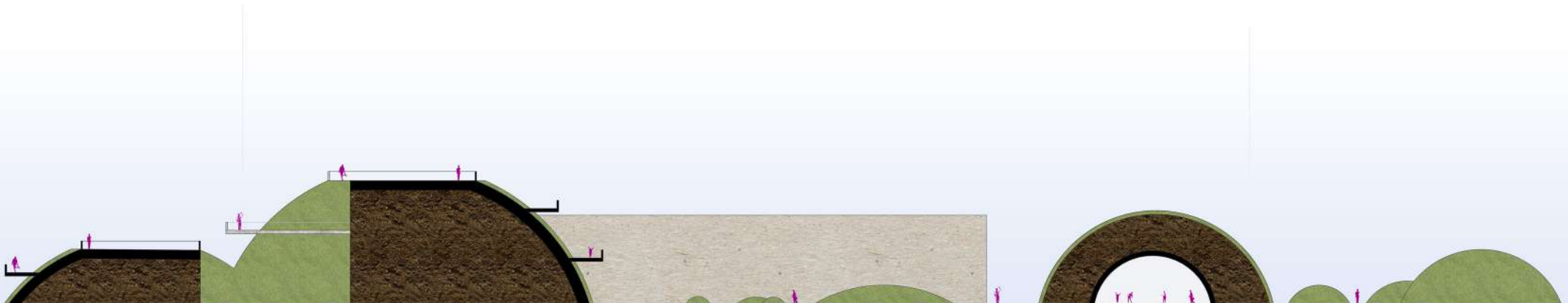
WALKWAY VIEW

THE CHANGE IN TOPOGRAPHY INTRODUCES A NEW SENSE OF ADVENTURE AND AESTHETIC FOR USERS. SOME ARE USED AS A PLAYING AREA FOR THE KIDS WHILE OTHERS ACT AS OBSERVATIONAL DECKS



BIRD'S EYE VIEW

THE INTEGRATION OF LIGHT AND LOW-RISE ARCHITECTURE WITHIN THIS GREEN SPACE ADDS ON TO THE AESTHETIC AND INTRODUCES MORE USES AND DIFFERENT FUNCTIONS FOR THE PASS BYERS TO DO



SECTION AA'

05

VERTICAL CITY

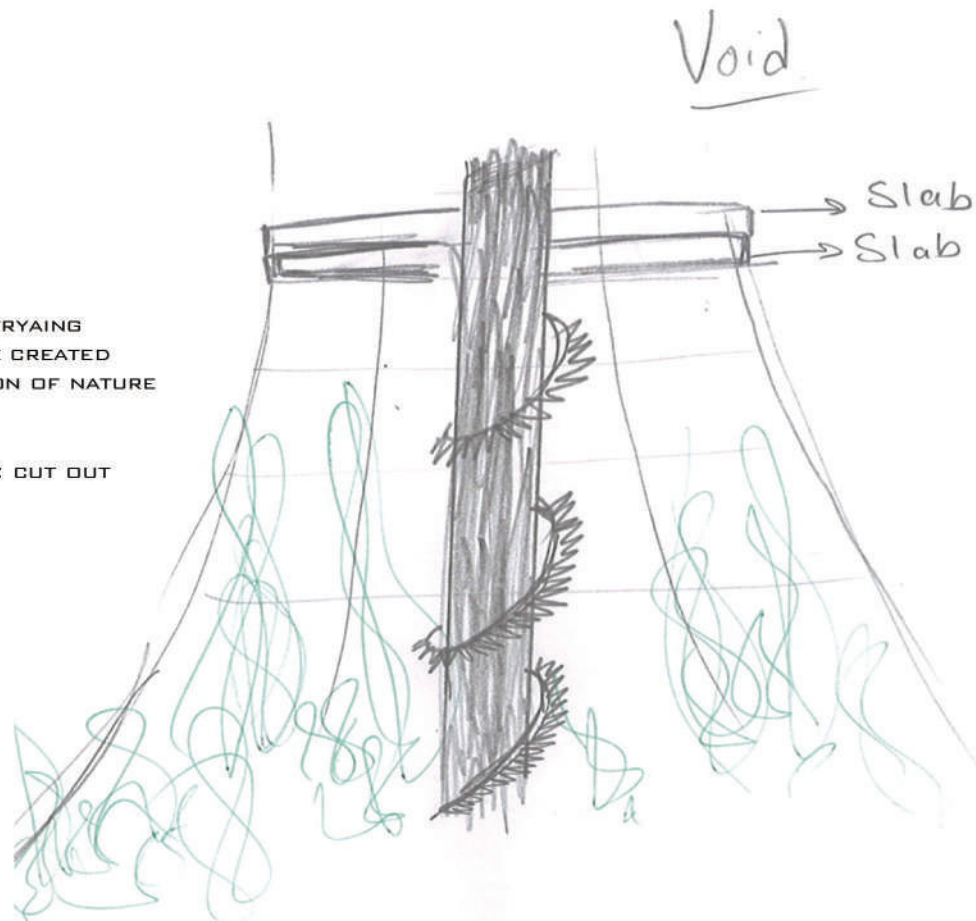
MIXED USE HIGH RISE BUILDING

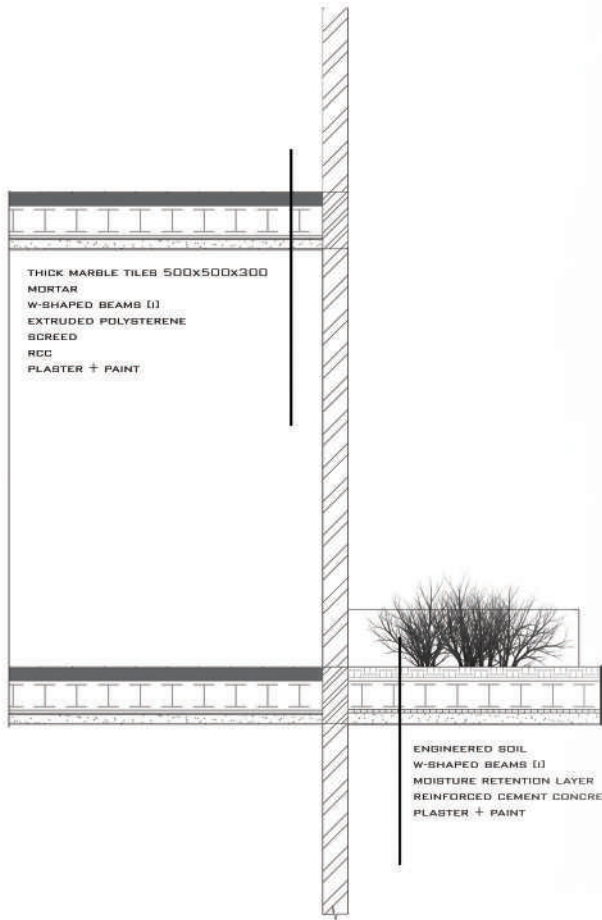
DESIGN STUDIO V, 2016

A PLACE WHERE THE SMART LIFE MEETS THE COMMUNITY LIFE IN A BALANCED MANNER. THIS BUILDING HOUSES SEVERAL FUNCTIONS RANGING FROM ENTERTAINMENT AREAS TO RESIDENTIAL UNITS TO BUSINESS SECTORS, ALL OF WHICH ARE INTERLOCKED AND CONNECTED THROUGH THE INTRODUCTION OF NATURE AND OUTDOOR SPACES MERGING FROM THE CENTER OF THE BUILDING.

EARLY SKETCHES PORTRAYING
THE MAIN IDEAS TO BE CREATED
WITH THE INTRODUCTION OF NATURE
INTO THE STRUCTURE

SKETCH ON THE RIGHT: CUT OUT
OUTDOOR AREA



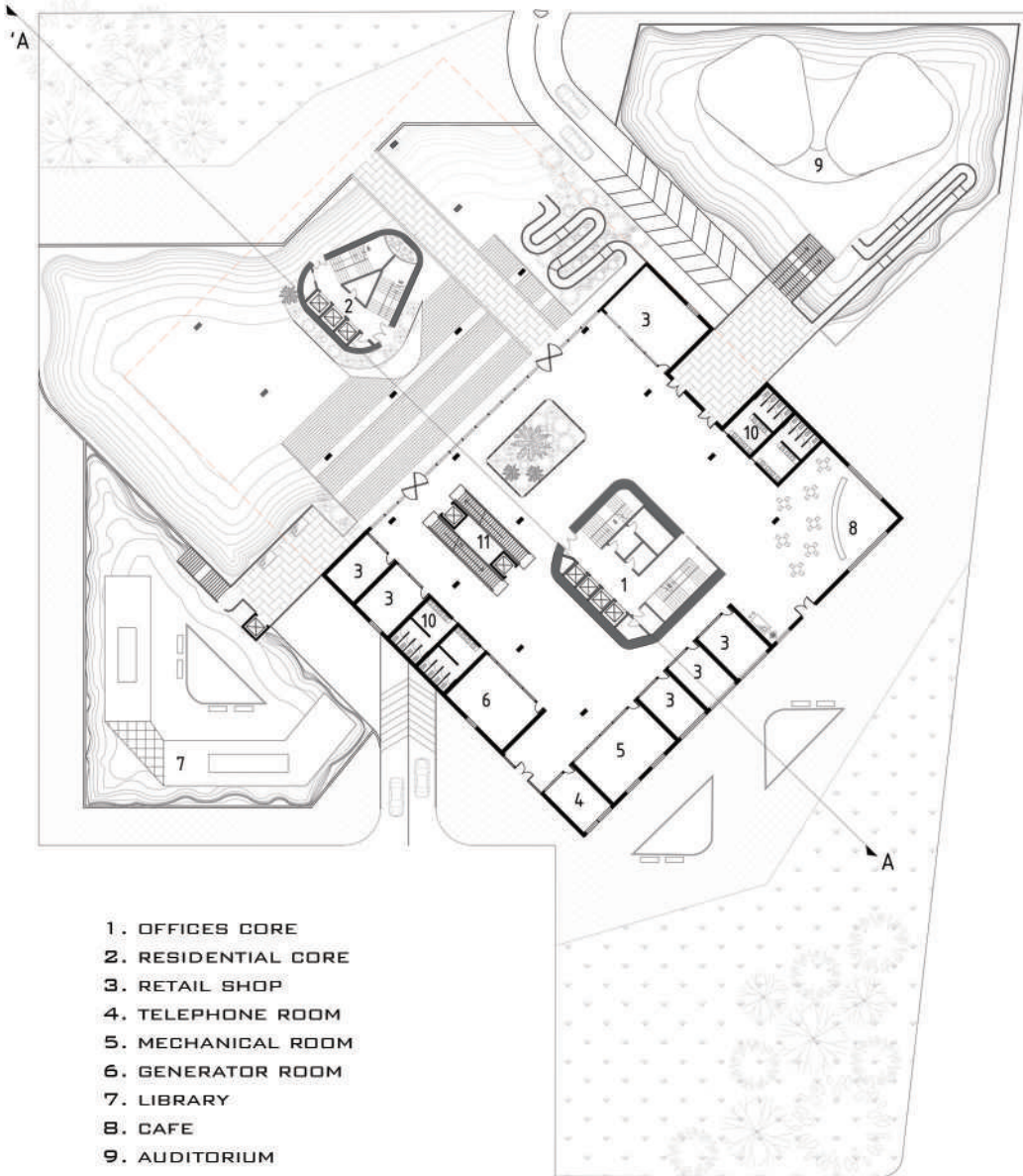


STRUCTURE DETAIL - MATERIALITY USE

A CUT THROUGH THE EXTERIOR AND INTERIOR SLABS EXPLAINS THE DIFFERENT TREATMENTS USED TO SECURE A BETTER SLAB CONDITION

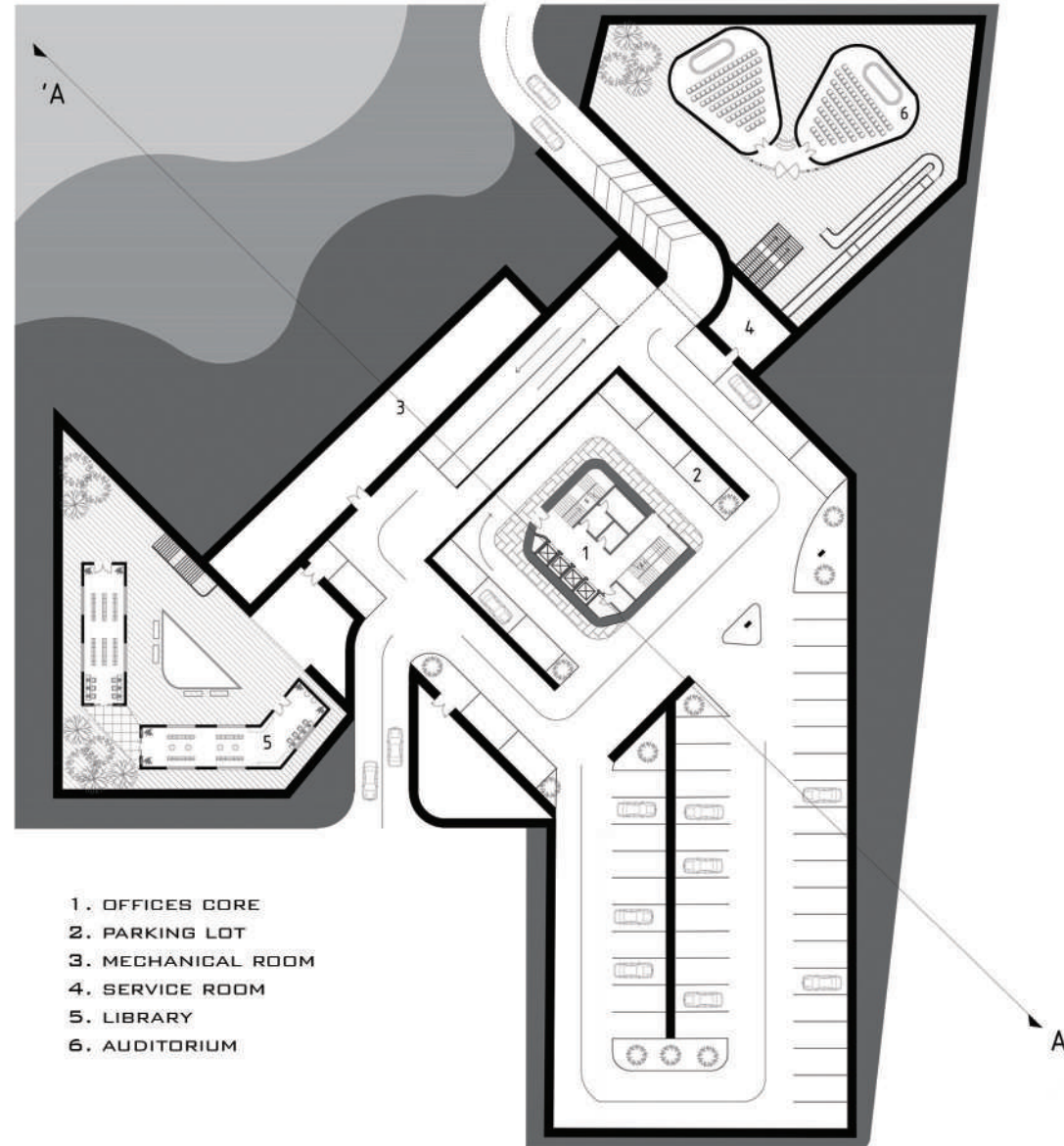


NORTH ELEVATION



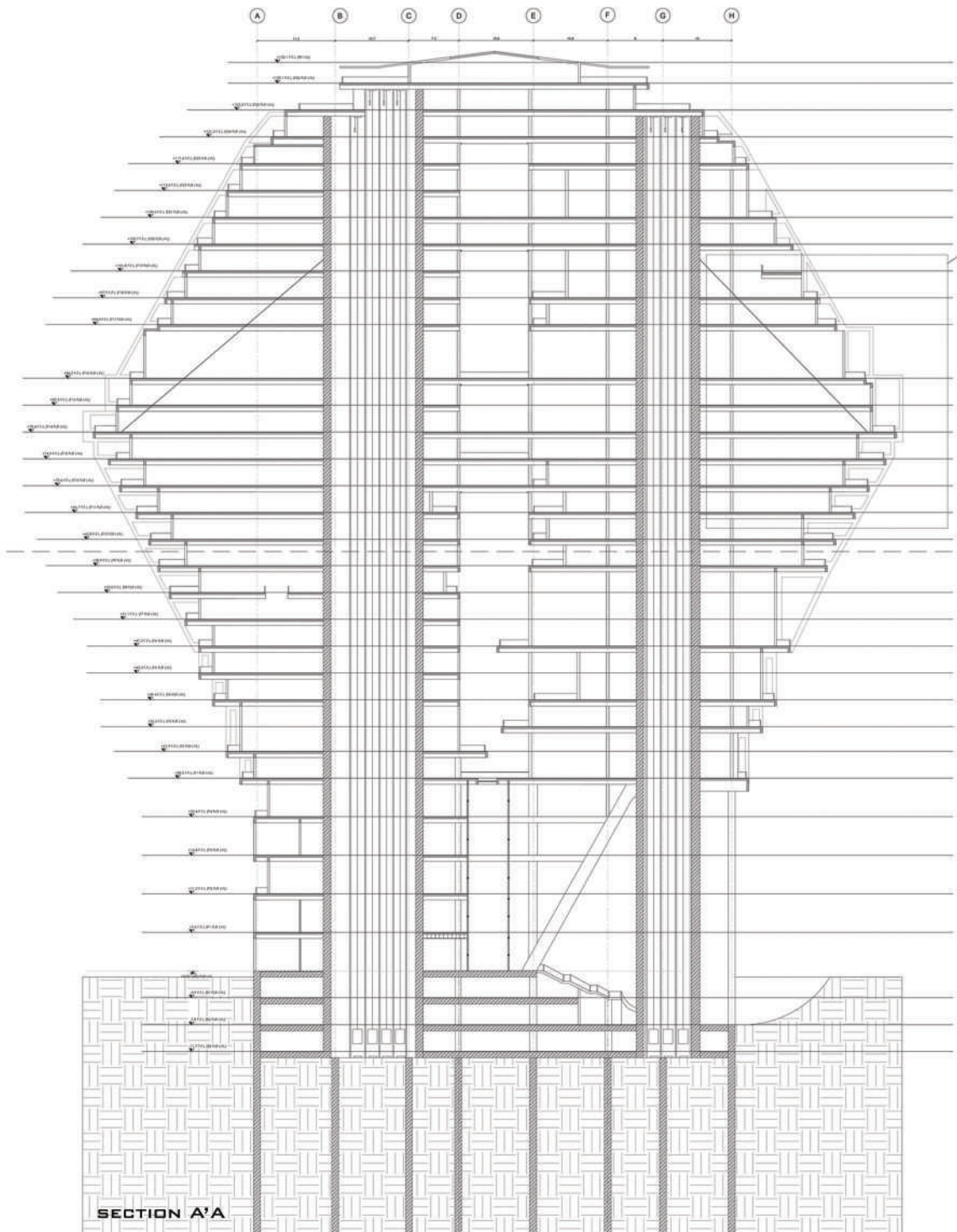
- 1. OFFICES CORE
- 2. RESIDENTIAL CORE
- 3. RETAIL SHOP
- 4. TELEPHONE ROOM
- 5. MECHANICAL ROOM
- 6. GENERATOR ROOM
- 7. LIBRARY
- 8. CAFE
- 9. AUDITORIUM
- 10. RESTROOM
- 11. PODIUM'S VERTICAL CIRCULATION

GROUND FLOOR PLAN - PODIUM LEVEL 0

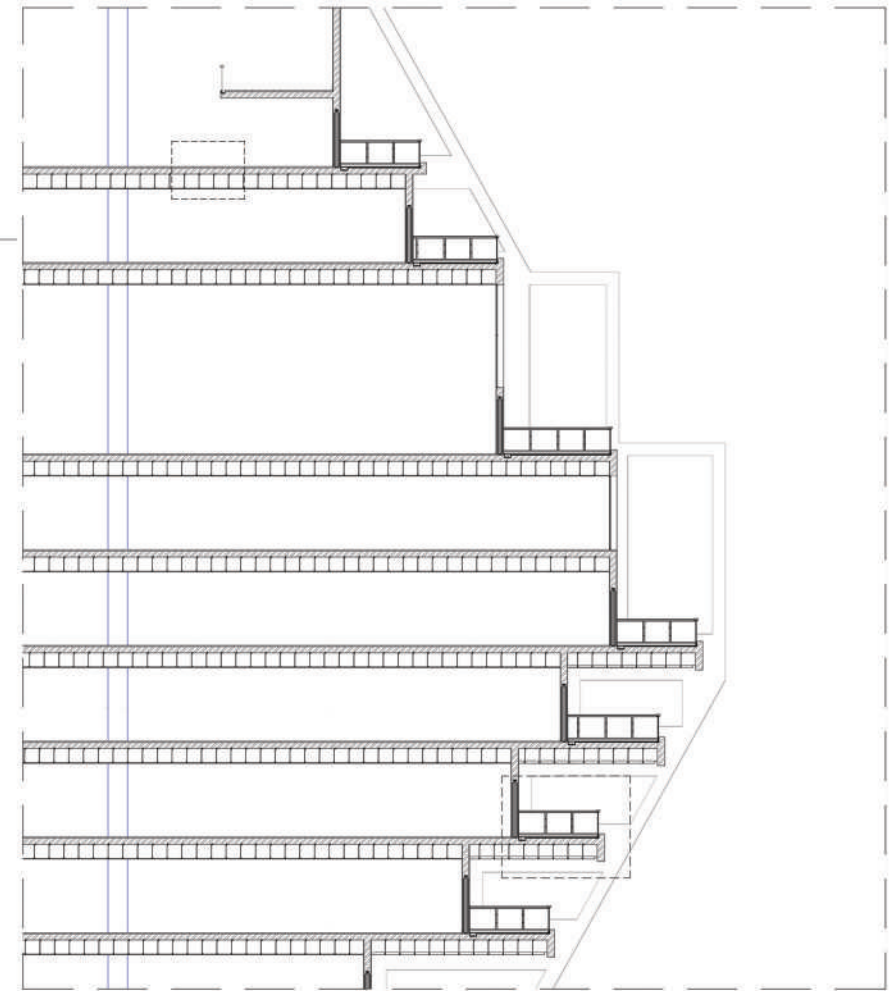


- 1. OFFICES CORE
- 2. PARKING LOT
- 3. MECHANICAL ROOM
- 4. SERVICE ROOM
- 5. LIBRARY
- 6. AUDITORIUM

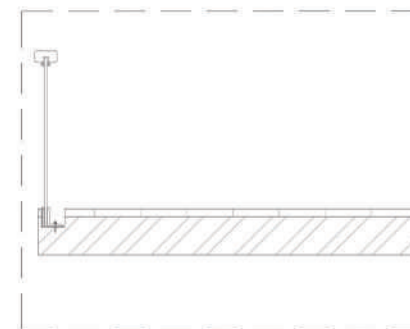
BASEMENT FLOOR PLAN - LEVEL -1



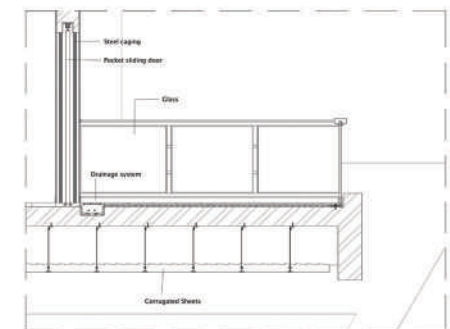
THE DANTELIEVER SECTION AT BOTH ENDS OF THE FLOOR IS SUPPORTED BY TENSION CABLES CONNECTED BETWEEN THE SLAB AND THE CLOSEST CORE



THESE DETAILS SHOW THE DRAINAGE SYSTEM USED FOR THE TERRACES AS WELL AS THE ELEMENTS FOUND IN A FALSE CEILING. DETAILING OF THE HANDRAIL IS SHOWN.



HANDRAIL DETAIL



TERRACE DETAIL



EAST ELEVATION

SOUTH ELEVATION



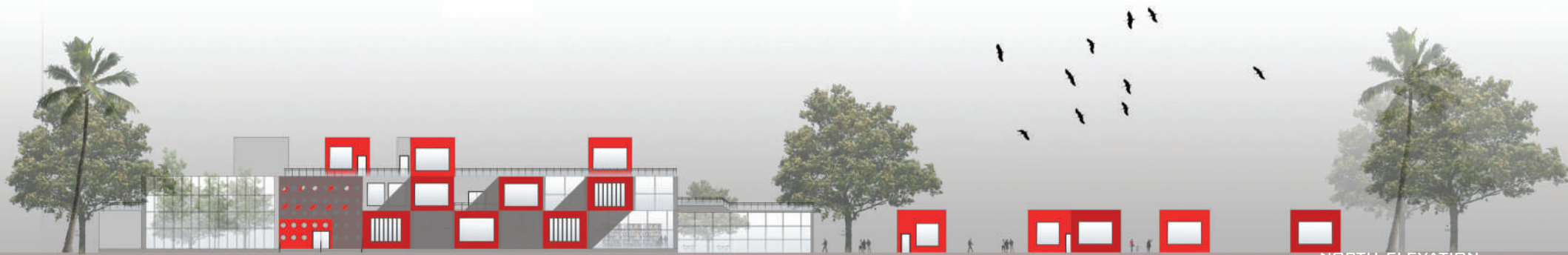
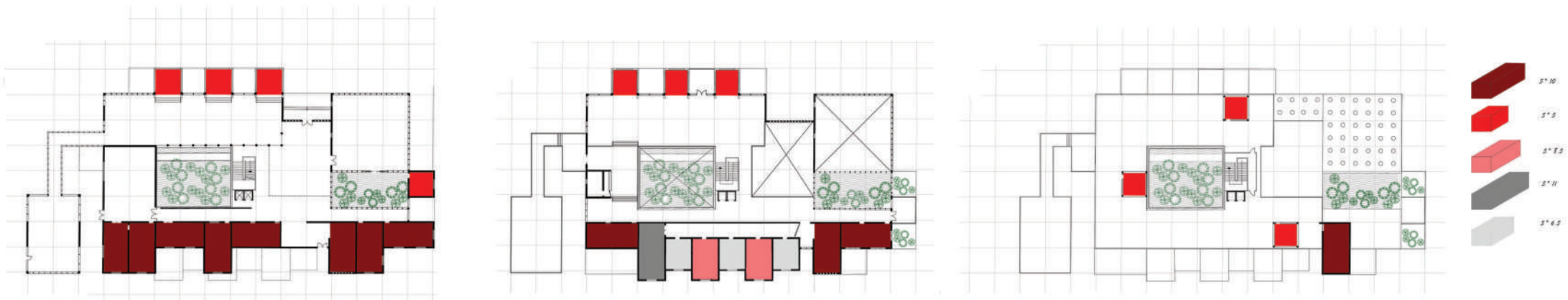
WEST ELEVATION

06

ABUDHABI MEDIATHEQUE PUBLIC MULTIMEDIA LIBRARY

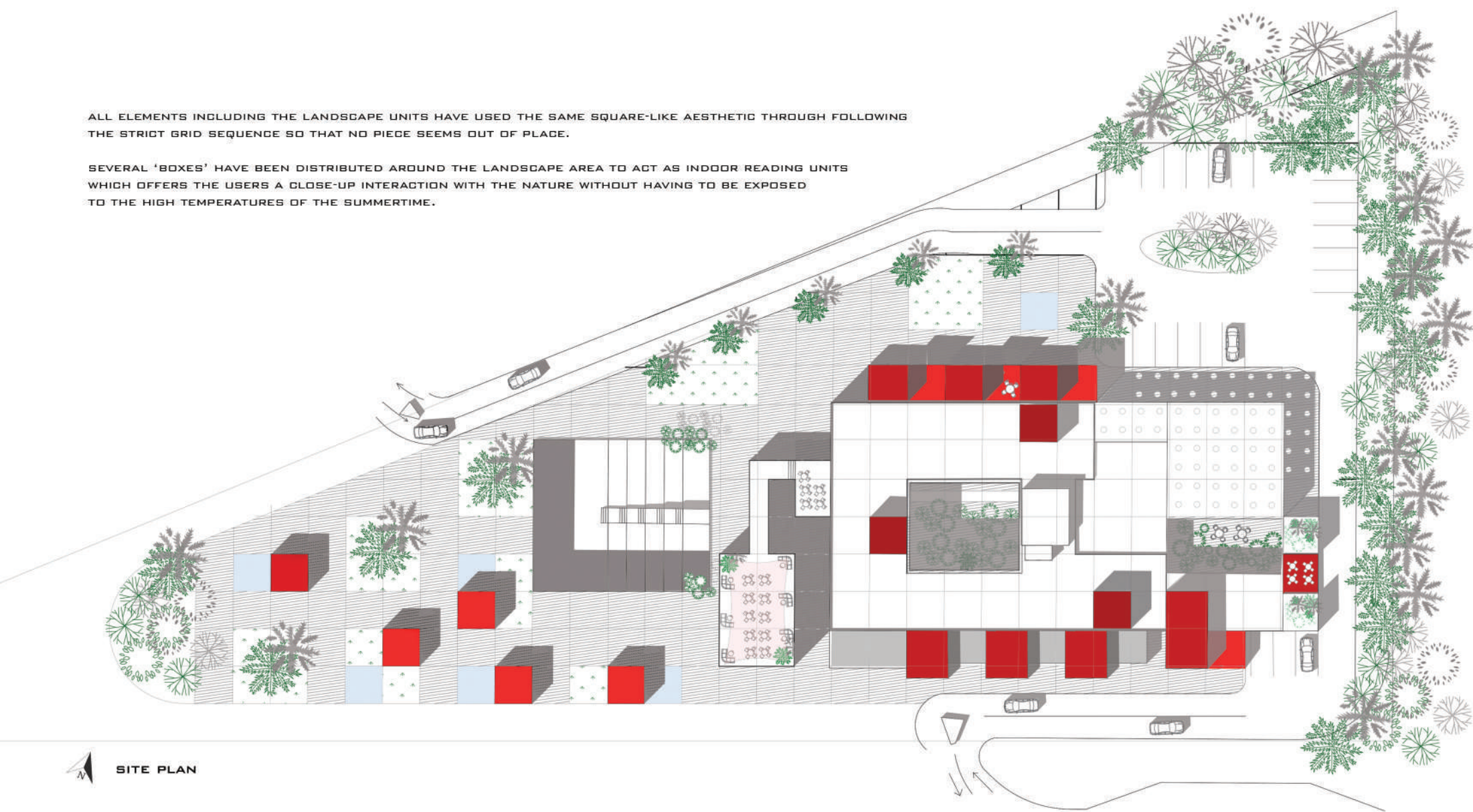
DESIGN STUDIO IV, 2016

INSPIRED BY TSCHUMI BERNARD AND STEPHANE MALKA'S CREATIONS, A PIXELATED STRUCTURE THAT CONTRASTS ITS SURROUNDING BY ITS BRIGHTLY RED SURFACES WAS CREATED. FORMING A DESIGN AND THAT RELIES ON THE PUSH AND PULL FORCES CREATES AN INTERESTING LIGHT PLAY BETWEEN THE DIFFERENT SPACES.

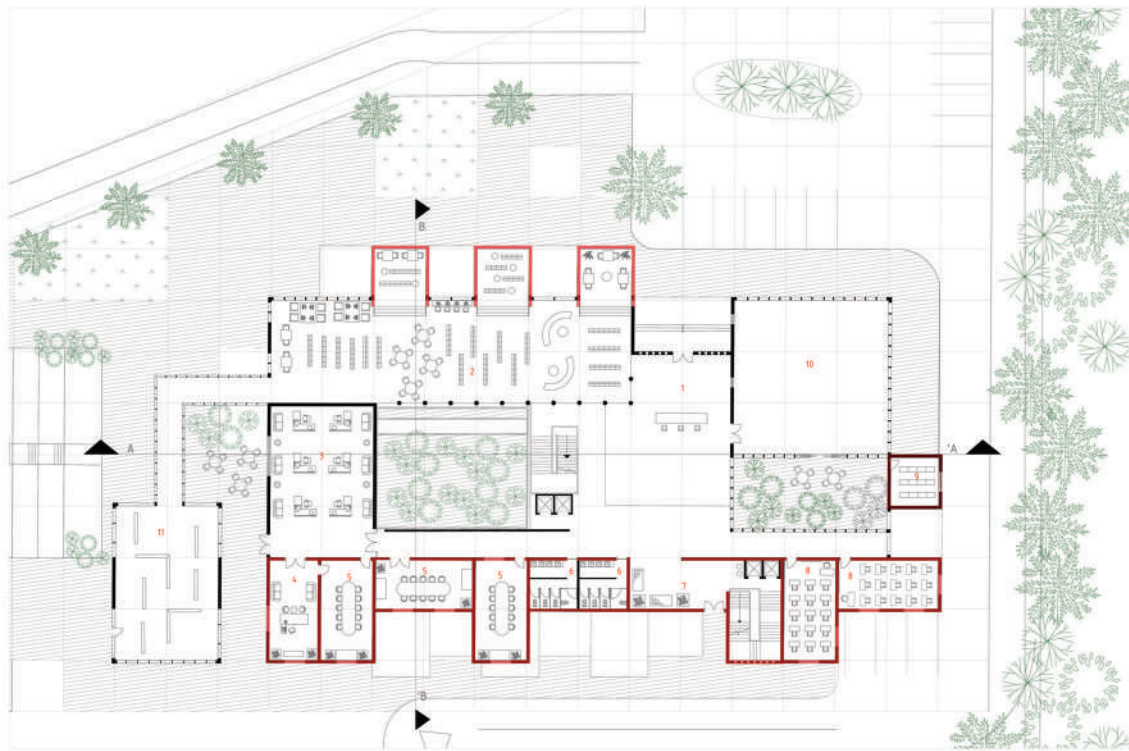


ALL ELEMENTS INCLUDING THE LANDSCAPE UNITS HAVE USED THE SAME SQUARE-LIKE AESTHETIC THROUGH FOLLOWING THE STRICT GRID SEQUENCE SO THAT NO PIECE SEEMS OUT OF PLACE.

SEVERAL 'BOXES' HAVE BEEN DISTRIBUTED AROUND THE LANDSCAPE AREA TO ACT AS INDOOR READING UNITS WHICH OFFERS THE USERS A CLOSE-UP INTERACTION WITH THE NATURE WITHOUT HAVING TO BE EXPOSED TO THE HIGH TEMPERATURES OF THE SUMMERTIME.

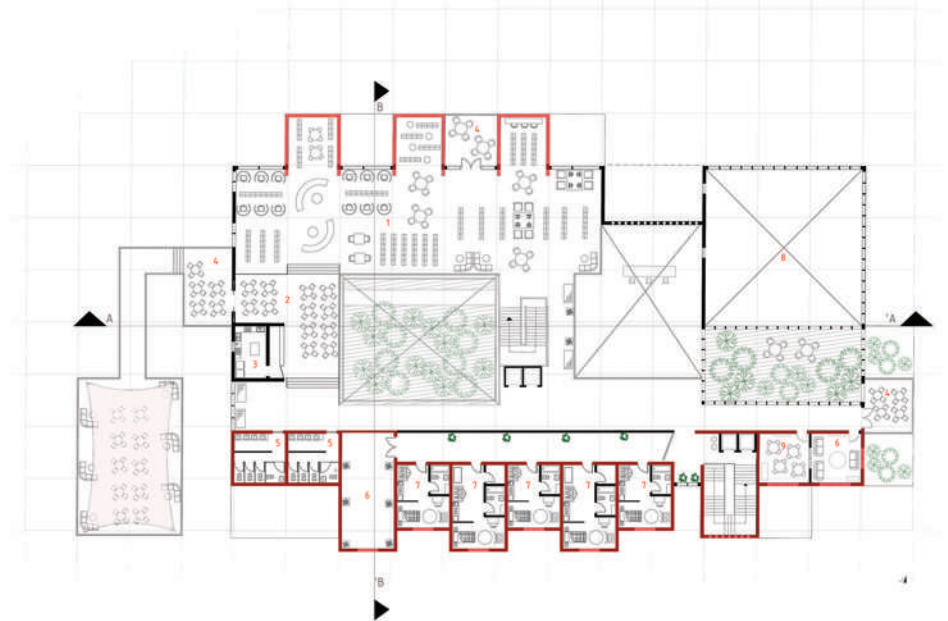


SOUTH ELEVATION



- 1. MAIN ENTRANCE
- 2. LIBRARY
- 3. OFFICE
- 4. ADMINISTRATION
- 5. MEETING ROOM
- 6. RESTROOM
- 7. SEMI-PRIVATE ENTRANCE
- 8. CLASSROOM
- 9. STORAGE
- 10. MULTIPURPOSE HALL
- 11. GALLERY

GROUND FLOOR PLAN

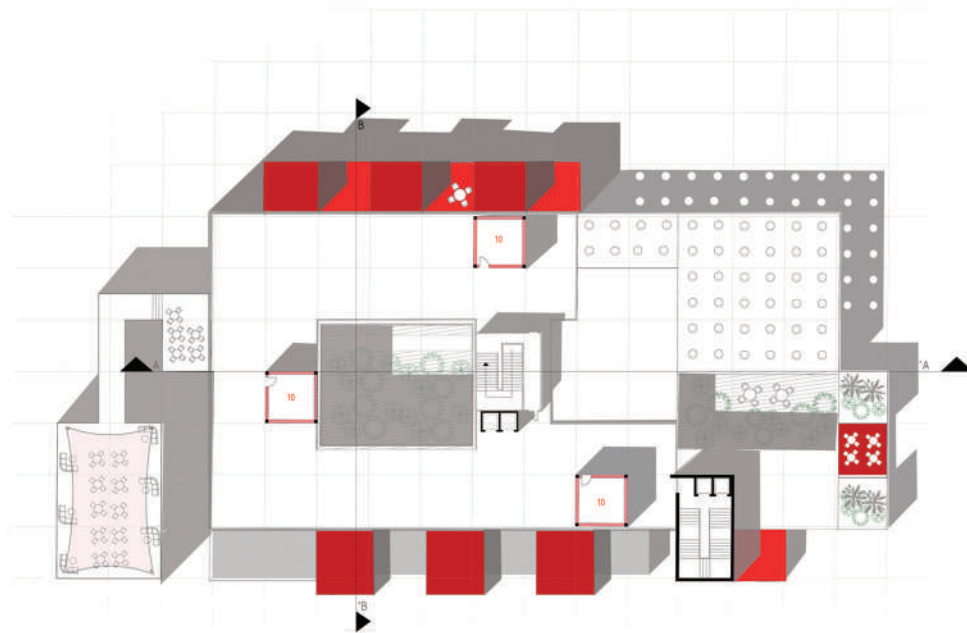


- 1. LIBRARY
- 2. CAFETERIA
- 3. KITCHEN
- 4. TERRACE
- 5. RESTROOM
- 6. LOUNGE
- 7. STUDIO
- 8. MULTI-PURPOSE HALL
- 9. PLAYROOM
- 10. READING SPACE
- 11. AUDITORIUM

FIRST FLOOR PLAN

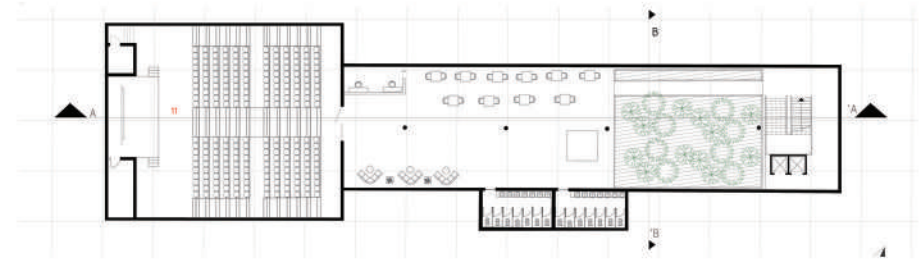


SECTION AA'



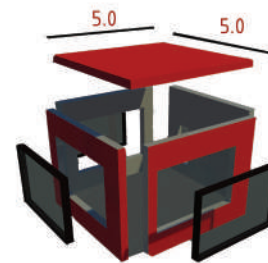
10. READING UNIT

ROOF FLOOR PLAN

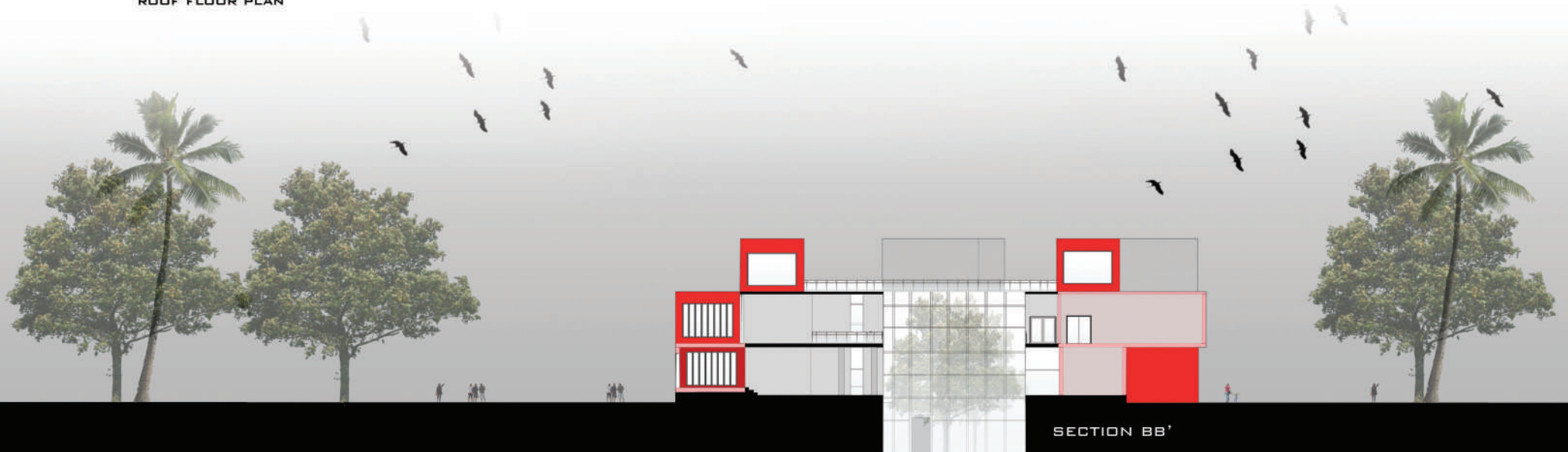


11. AUDITORIUM

UNDERGROUND FLOOR PLAN



THIS IS THE BASIC AND MOST PRIMITIVE UNIT THAT MADE UP THIS ENTIRE PROJECT THROUGH THE ACCUMULATION AND DIVISION OF THOSE INDIVIDUALISED UNITS TO CREATE DIFFERENT SPACES



SECTION BB'



EXTERNAL AESTHETIC

SHOWING HUMAN INTERACTION WITH THE PIXELATED SPACES AND THE EFFECT OF THE NATURE'S GREEN ON THE OVERALL AESTHETIC OF THE PROJECT



INTERNAL COURTYARD

MERGING NATURE WITH THE INTERNAL SPACES GIVES A BETTER SENSE OF AESTHETIC AND IT ALSO BRIGHTENS UP THE SPACE AND HELPS IN EXTENDING THE FLOW OF NATURE FROM THE OUTDOOR SPACES INTO THE INDOOR SPACES



LANDSCAPE COMBINATION

INTERGRATING LANDSCAPE ELEMENTS WITHIN THE OUTDOOR SPACES IMPROVES THE ATMOSPHERE OF THE SPACE AND IT CREATES A MORE APPROACHABLE AND PLEASANT ENVIRONMENT FOR ALL THE USERS

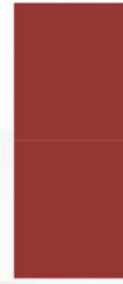
HOUSING UNITS:

TO PORTRAY THE INTENDED OBJECTIVES IN THE BEST WAY POSSIBLE IS BY CREATING UNITS THAT ARE INTERCONNECTED IN A WAY THAT WOULD CERTAINLY INCREASE THE LEVEL OF INTERACTION AND ENHANCE THE SOCIAL LIFE BETWEEN PEOPLE WHILE STILL MAINTAINING PRIVACY

HAVING GREENARY, SEATING AREAS AS WELL AS OPEN SPACES INTEGRATED WITHIN THE RESIDENTIAL UNITS WOULD ENCOURAGE THE TENANTS TO GET TO KNOW EACHOTHER AS NEIGHBOURS AND RESIDENTS OF THE SAME BUILDING



Horizontal Unit
| Apartment |



Vertical
apartment



Vertical Villa



Horizontal Unit
| Apartment |



Vertical
apartment



Vertical Villa



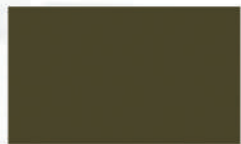
Studio unit



Office unit



Vertical Villa

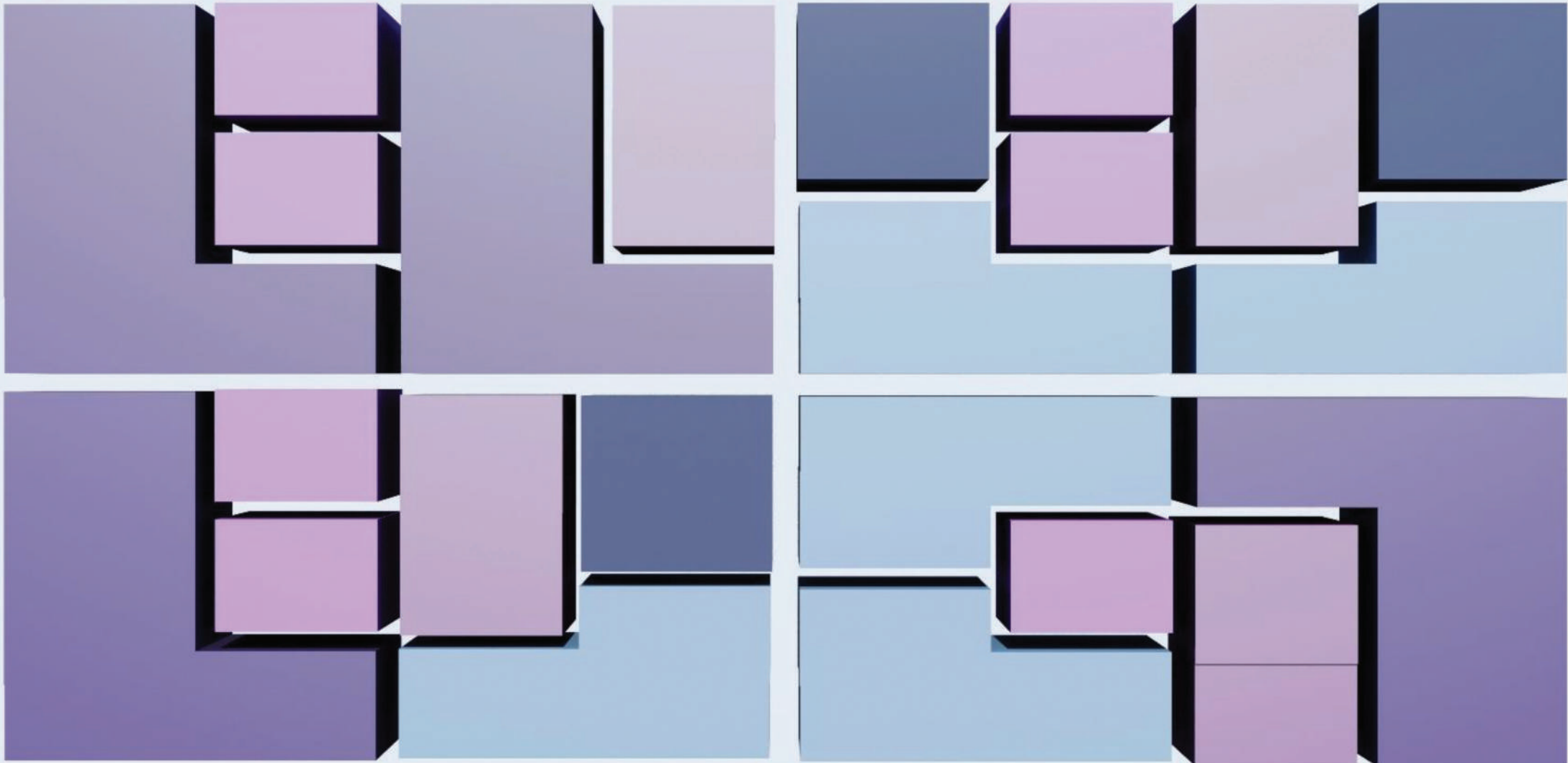


Open space 1*

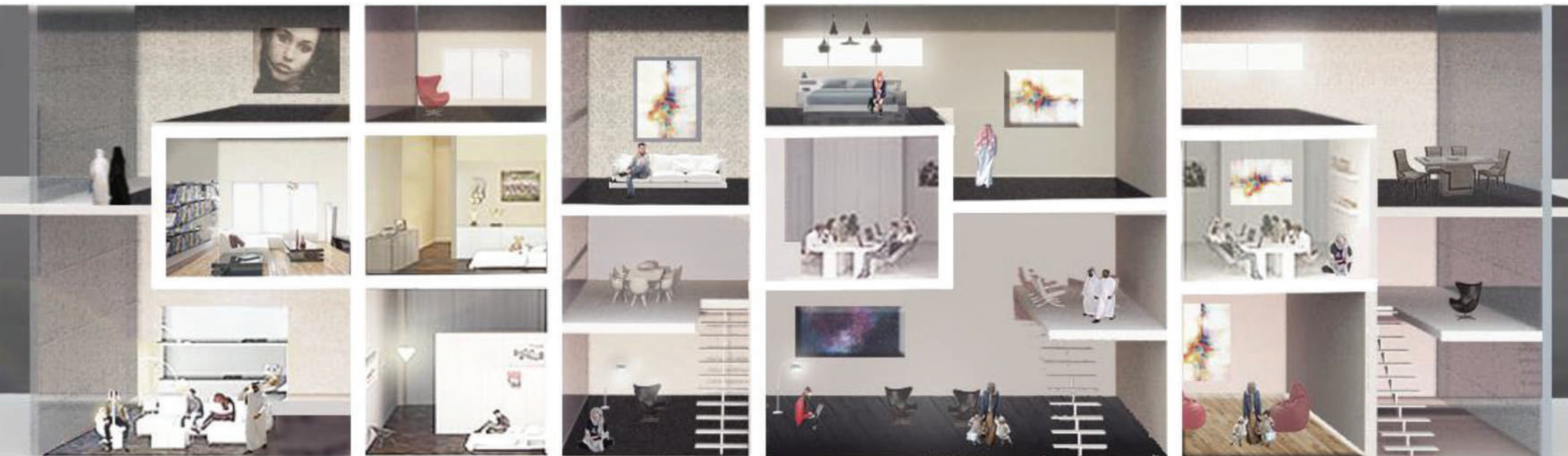


Open space 2*

PROPOSAL DESIGN



- 3 Bedroom vertical villa
- 2 Bedroom vertical villa
- 1 Bedroom apartment
- 1 Bedroom vertical apartment
- studio



PROPOSAL RENDER

THE FINAL RENDER SUGGESTS THE FLEXIBILITY OF SPACES AS WELL AS THE INTEGRATION OF NATURE TO BETTER ENHANCE THE LIVING STANDARDS OF THE USERS LIVING IN VERTICAL APARTMENTS

08

QASA'ED

AN INTERACTIVE PAVILION

WINNING PROPOSAL FOR THE CHRISTO AND JEANNE-CLAUDE AWARD COMPETITION (GROUP PROJECT), 2018

Q'ASIDA: IS AN ARABIC WORD THAT MEANS A POET

“IN BEDOUIN POETS, THE DESERT IS NOT A PLACE OF WAR BUT A PLACE FOR LOVE AND COMMUNITY. IT WAS NOT A SITE OF EXILE BUT A LOCATION FOR FAMILY AND SELF-FULFILMENT. BEDOUINS DID NOT SEE IT AS A DEVOID OF NATURE BUT CONSIDERED IT THEIR LIFE”

THEREFORE, QASA'ED AIMS AT RESEMBLING THE COMMUNAL RELATION BETWEEN THE DESERT LIFE AND THE BEDOUIN LIFE IN THE UAE THROUGH THE PAST YEARS, LOOKING AT THE JOY THE CITIZENS HAD IN SPENDING THEIR NIGHTS TELLING STORIES AND POETRY ON TOP OF THE SAND DUNES.



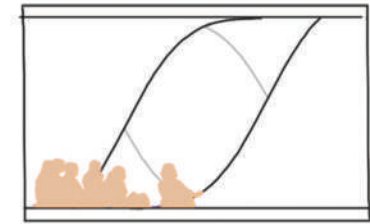
SOLID MASS



CARVED SPACES

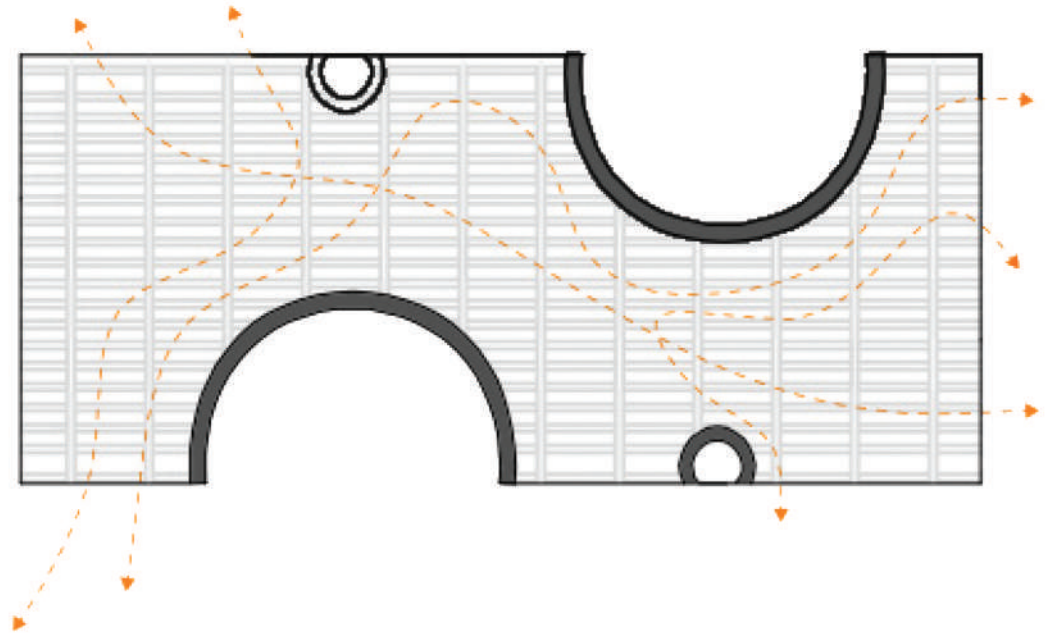
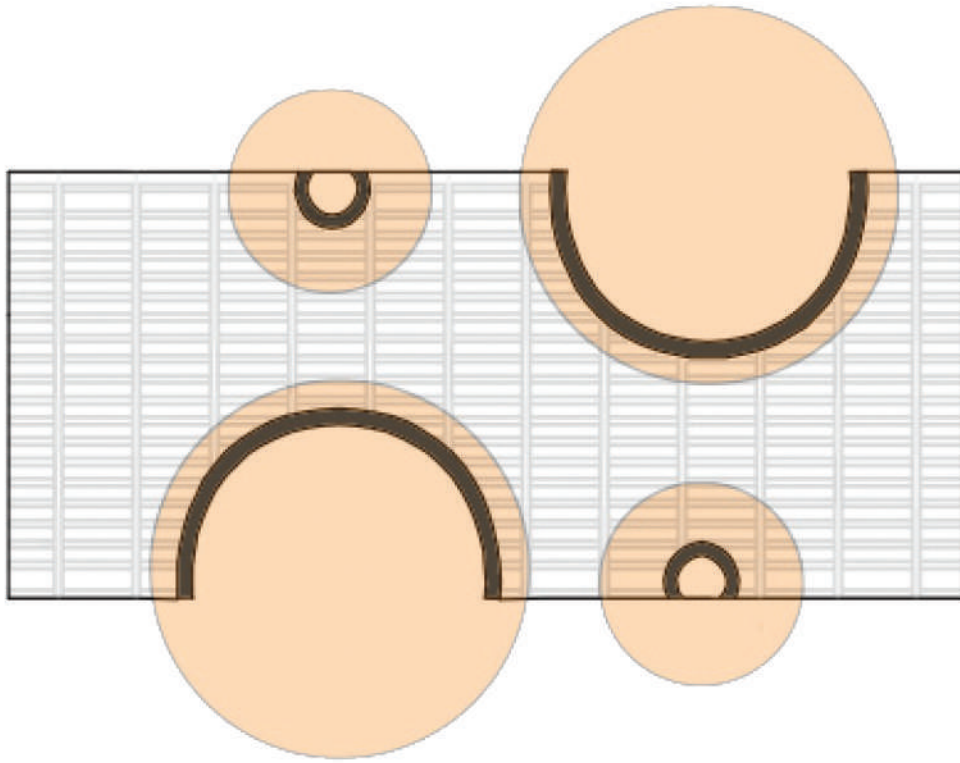


POETRY SPACES



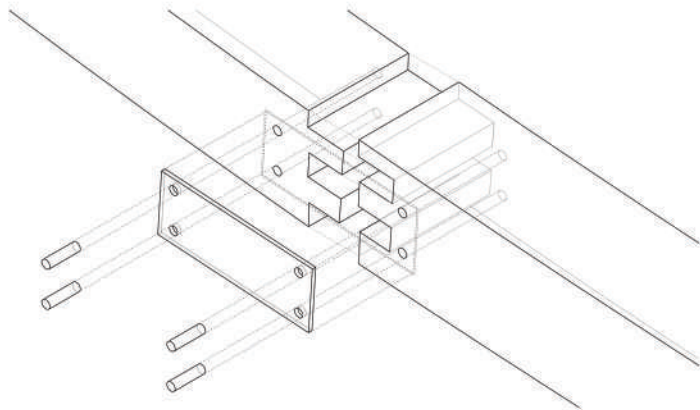
DUNE-LIKE INTERIORS

THE CONCEPT OF QASA'ED IS DERIVED FROM THE METAPHORICAL MEANINGS THE UAE CITIZENS HAD SPOKEN ABOUT WHEN DESCRIBING THE DESERT AND ITS MAGNIFICENCE. THE WOODEN INFRASTRUCTURE (QASA'ED) RESEMBLES THE DESERT IN ITS FLUIDITY AND CURVINESS. THE EXTERIOR AND SECTIONAL AESTHETIC RESEMBLES THE ARABIC CALLIGRAPHY IN ITS FLUIDNESS, WHILE THE INTERIOR LOOK IS OF RESEMBLANCE TO THE SAND DUNES IN ITS SMOOTH AND EDGY APPEARANCE



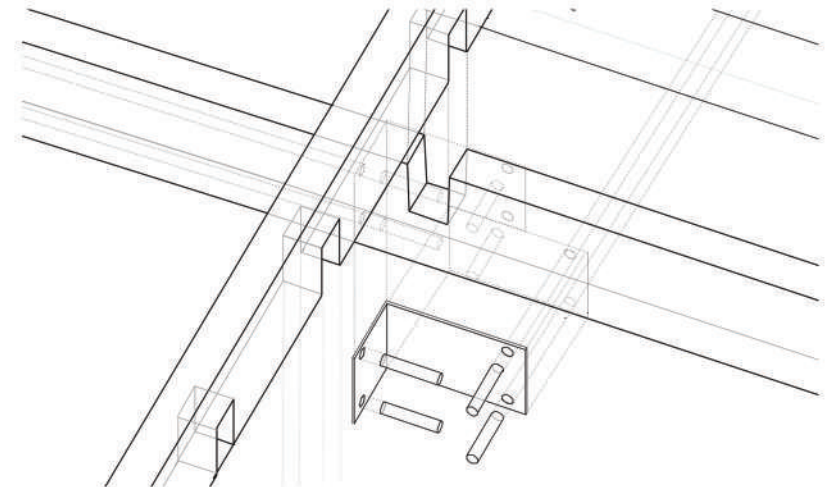
PLAN VIEW OF QASA'ED

QASA'ED HAS BEEN DESIGNED WITH THE INTENTION OF ALLOWING HUMAN INTERACTION AND GATHERINGS WITHIN IT SO THAT, THE INDIVIDUALS ARE TO TOUCH, FEEL AND MAYBE EVEN WRITE POETRY ABOUT QASA'ED



JOINTS CREATED WITHIN THE STRUCTURE TO HOLD ALL THE PIECES TOGETHER

DOG BONE JOINTS ARE TO BE USED IN ADDITION TO METAL ANGLES AND PLATES TO INCREASE THE STRENGTH OF THE STRUCTURE



UNVEILED ON THE 21ST OF NOVEMBER 2018, AT NYUAD CAMPUS



Two seniors at Abu Dhabi University have won the annual Christo and Jeanne-Claude Award, which supports public artworks. Maram Kassab and Mariam Ayoub received the honour for the structure *Qasa'ed*, which, Kassab says, "celebrates the existence and importance of creative literature in Emirati culture".

While renderings of the work have yet to be released, the artists spoke to us about their piece: "We thought of designing *Qasa'ed* as an interactive pavilion that represents the joy the Bedouin had spending nights recounting stories and poetry from the tops of the sand dunes," architecture student Kassab says.

Seen from the outside, the wooden curve will evoke Arabic calligraphy, while inside, Kassab says, "it was designed so that you feel as if you're sitting on top of the sand dunes". For the Bedouin, she says, the desert wasn't "a void of nature, but rather a place for community, for interaction, for telling stories".

Indeed, the plan is to use *Qasa'ed* to host poetry readings. The work will be unveiled in November at New York University Abu Dhabi, whose Art Gallery has partnered with the artist pair Christo and Jean-Claude and the Abu Dhabi Music and Art Foundation to support the award. The award carries with it US\$10,000 (Dh36,725) towards production and \$5,000 towards future projects. Later, it will travel to New York University, as an ambassador for the UAE's cultural tradition.

Kassab and Ayoub, both Palestinians, met in their first year of college and have been collaborating since. "We tend to get motivated by being together," Kassab says. "When we work together, we try to focus on our strengths to balance creativity with good planning. One of us is more creative while the other is a better planner."

This year's winners are Maram Kassab and Mariam Ayoub, architecture students from Abu Dhabi University. Christo has flown them to the UK capital to meet him in person and see his latest artwork.



VISITING LONDON, UK TO MEET CHRISTO AND VIEW HIS LATEST ARTWORK, THE MASTABA