



STYLE & TECH

White Collection

Fashion • Sustainability • Technology

High performance everyday shirts

www.styleandtechproject.com

About us

Style & Tech was born of combining experience and passion; accumulated experience of four family generations dedicated to the clothing industry, passion for fashion and passion for technology.

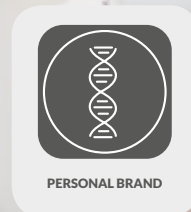
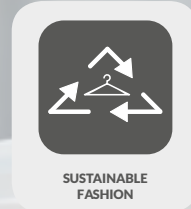
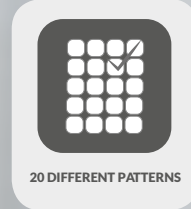
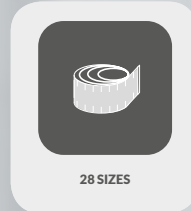
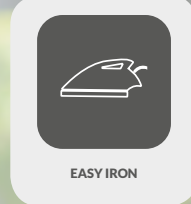
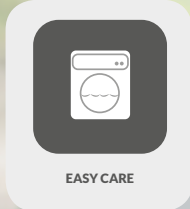
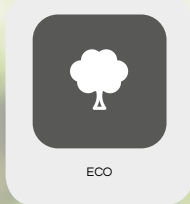
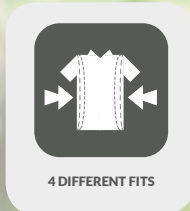
We live in a very demanding society. The world that surrounds us demands of us higher and higher personal and professional performance. Time is precious and scarce commodity. We seek clothes that respond to that environment.

Style & Tech wants to offer answers and solutions to the challenges and demands that we face in our day-to-day lives. Days that are often a genuine race; a race with many curves, changes of direction, sharp turns, where we go from zero to sixty in a few seconds. Days that sometimes turn into a very hard real-life rally and a genuine adventure.

The shirt is the essence of male dress and this collection seeks to offer shirts that rise to the challenge of the times in which we live. Challenge in terms of performance and performance in terms of ethics and responsibility in production processes.



What does Style & Tech offer?





MOISTURE WICKING

The result of evolution and adaptation to nature, human beings are capable of regulating their body temperature, even if there is a big difference between it and the external temperature. Anybody is comfortable when there's a balance among production, release and uptake of heat. The human body activates different physiological thermoregulatory mechanisms when it is not in thermal equilibrium. When we are in a warm climate or exert ourselves physically, our body temperature rises and the body activates mechanisms to try to increase heat loss; these mechanisms include increasing blood flow to facilitate heat exchange and cool the skin.

Since the external temperature is higher than the body temperature, we absorb heat, which together with that produced by our metabolism causes an increase in body temperature that we must eliminate through sweat. Sweat comes from vaporising water from the organism that emerges through pores in the skin.

Depending on the activity we are doing, we consume more or less oxygen, and the more oxygen we consume, the greater the heat load we generate. This brief introduction is intended to help you understand that any item of clothing will in general be more comfortable the less metabolic effort its user must make to reach thermal equilibrium.

Water has a high specific heat capacity, to evaporate water in the form of sweat significant amounts of body heat are consumed, clothing must encourage this process by properly removing that water (sweat), to prevent the body from unnecessarily consuming more energy.

The correct diffusion of water in contact with the skin and clothing through clothing with good breathability prevents sweat from condensing on the skin. The Cool-Max® spinning fabrics favour this perspiration.

*No matter what kind
of transport you
travel in ...*

Measurement of said perspiration can be done using variables R_{ct} which indicate thermal resistance (the greater a fabric's R_{ct} , the greater its thermal insulation) and resistance to water vapour which is symbolised as Ret (a low Ret coefficient means great breathability since the fabric does not oppose resistance to diffusion of the water vapour, sweat). These coefficients are measured in the laboratory, and we have our fabrics tested in the laboratory with a Ret in all cases $< 3.1m^2Pa/W$, which means an extremely high breathability. The water vapour permeability index is proportional to the ratio between R_{ct} and Ret and in all the laboratory tests they have given us spectacular results in terms of the ability of our garments to expel said water vapour, sweat, to the exterior, helping us to achieve our thermal balance and achieve a feeling of comfort and freshness unmatched in high temperature climates and situations requiring effort.

either by car



- o High consistency and durability in the fabric's performance.
- o Easy care.
- o Fast drying.
- o Good performance in breathability and moisture management.
- o Good air permeability.
- o Good fabric stability.
- o Good management and performance in the treatment of moisture and sweat permanently throughout the life of the product.
- o Washing machine- and detergent-resistant fabric.



CoolMax® is a special polyester yarn by INVISTA, which is unique in the world, designed with a special section to expand the sweat and allow it quickly and efficiently to evaporate. Our garments are certified by our fabrics manufacturer and in the laboratory as CoolMax Core®, which offers the following advantages:

cycling



To wear a shirt with:

- Elastic fabric**
- Ultra breathable**
- Solar protection**
- Antibacterial**
- Anti-odor**

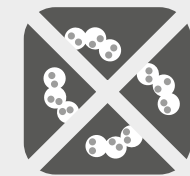
Is something to be thankful in the day to day.



The use of CoolMax® spinning in our garments has an extremely practical side effect. The same technology that removes sweat and keeps us dry quickly dries our clothes rapidly without the need to use a dryer (which on is not recommended anyway). We take the garment from the washing machine, put it on a clothes hanger, and before we know it the garment will be completely dry.



or public transport



ANTIBACTERIAL

In manufacturing the fabric we use, Sanitized® by SANITIZED AG is used, a world-leading Swiss company in hygiene. The advantages of the use of an antimicrobial or antibacterial product are:

- o It keeps the freshly-washed sensation in a garment.
- o It eliminates odours created by fungi and bacteria.
- o It controls pollution caused by bacteria.
- o It reduces the risk of contamination of the garment.



ANTI ODOR

Sweating is produced via two types of sweat glands, apocrine glands and eccrine glands. Each gland produces a different kind of sweat and both kinds of sweat are in themselves odour-free. The odour occurs when a type of bacteria that lives naturally in our skin feeds on the sweat, the antibacterial applied to Style & Tech clothing prevents such bacteria from reproducing and thus the unpleasant smell that we associate with the sweat from arising.

Our garments are treated with an antibacterial finish developed by Sanitized® and use CoolMax® technology for the rapid removal of sweat, a combination that causes our garments to not retain any body odour and can be used continuously without odours that impregnate them and a feeling of constant freshness.

*Whether in an office
Outdoors
or after a long
Journey,*



FRESH

To reach the end of a day with an odour-free shirt free that is dry of body moisture, to hang it on a hanger, and use it the next morning as if it were newly out of the washing machine, that's the freshness effect. To be working all day, to sweat and to notice your clothes rapidly removing the sweat and you're dry, that's the freshness effect.



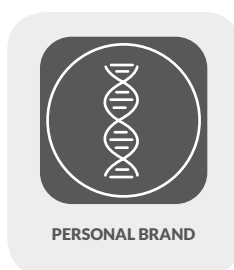
You need to be able to reach the end of a long day and that your clothes do not remind you and those around you how difficult the day has been.



*You need that
fresh feeling
of a freshly washed shirt.*



Style & Tech helps project our personal brand actively and passively. We actively provide elegance, we provide technology that prevents us from arriving at a meeting soaked in sweat or with a strong body odour after hours of travel, we offer the ideal shirt design for every man for every occasion, etc. We passively identify with responsible consumption, with a taste for the practical, with a commitment to sustainability while being up-to-date with the latest technologies...



A brand is a sign, a footprint, what is remembered when we are no longer present. In the competitive and complex world that surrounds us, it is essential to look after the concept of personal branding; we should try as far as possible to prepare, protect and transmit an appropriate image to the people around us, we must try to differentiate ourselves to be able to excel in such a competitive and changing environment, we have to build a positive image. Style & Tech helps look after the personal branding we project.

*You are at work and
your personal brand counts
The image you reflects is important.*

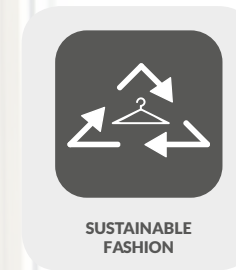


All of our shirts use fabrics that have been laboratory tested by the Aitex Textile Research Institute to determine the ultra-violet protection factor, and our minimum requirement is to obtain a UPF of 50 according to AS/NZS 4399:1996. The ability of the fabric to prevent the passage of ultraviolet radiation and the UPF 50+ is the greatest possible capacity. Protecting 97.5% against UVA and UVB radiation in a sustained manner and throughout the life of the garment.



There are times when you travel for work or pleasure, you spend many hours with the same shirt and you need that garment to endure what you endure.

*You need to be
flawless and comfortable
at the same time.*



Style & Tech is sustainable fashion for various reasons.

The fabric we use, which is treated with Sanitized®, can be washed less frequently, allowing you to save on water, electricity and detergent.

We adhere to the Ecoembes packaging management system, promoting and managing to make it possible for all the containers we generate to be recycled and have a second life.

All materials used in the making of our garments (buttons, labels, interlinings, etc.), fulfil the OEKO - TEX® certification. OEKO - TEX® is an independent system of testing and verification that is homogeneous throughout the world.

- o It certifies compliance with all legal regulations regarding the production processes for textiles,
- o It certifies the absence of chemical substances that may be harmful to health, even if they are not yet regulated by legislation.
- o It requires compliance with national requirements such as the US Consumer Product Safety Improvement Act (CPSIA) regarding lead.

We seek to market what is known as “Slow Fashion” in contrast with “Fast Fashion”. This collection, our ‘White Collection’, as an example of our overall philosophy, promotes a philosophy of responsible consumption.

- o Our materials are environmentally friendly. With certified processes.
- o We seek the sustainability of the industry through products of the highest quality.
- o We manufacture slow-moving and long-lasting garments, clothes that will last several campaigns and which the consumer does not tire of at the end of a season.
- o We manufacture locally, both the fabric and the finished garment.

The fabric we use is certified by Bluesign®. An independent certification that guarantees the efficiency and sustainability of the fabric production process, from the beginning of its manufacture to the end, making sure that no harmful chemical substance is used. The Bluesign® system is based on five principles:

- o Efficiency in the use of the raw materials and components used.
- o Consumer safety.
- o Water release.
- o Air release.
- o Health and safety at work.



As a project, we are fully engaged in trying to help improve the welfare of society both locally and globally. We seek to make general market consumption more responsible, more environmentally-friendly, more energy-efficient and to have less rotation than is currently the fashion.



*Sometimes we leave work
and feel like **relaxing** for a while*

Either with
**Friends
or
Family**



TERMOREGULATOR

As we stated more broadly in explaining the anti-perspiration properties, the human body activates different thermoregulatory physiological mechanisms when it is not in thermal equilibrium, among them sweat.

The effort that our body makes to release water in the form of sweat consumes energy (energy consumption that is associated with our thermal sensation of heat). Our clothes, helping the dissipation and evaporation of the sweat that we release, thus help the body to consume less energy, less energy transformed into heat while we sweat compared to a normal garment, which makes us fresher in extreme temperatures.

UPF 50 + protection against UVA and UVB radiation, UVB in particular, apart from protecting us against the harmful effects of such radiation, causes us to absorb less heat when we are exposed to the sun, which no doubt also helps us to enjoy a greater sense of freshness.

The structure of the fabric used by Style & Tech in your clothes (bearing in mind they are classic shirting fabrics) stores a little more air among its fibres, since air has a greater specific heat capacity, it makes the cooling process slower and provides us with a lightweight thermal barrier in cooler climates, effectively combining an overall thermoregulatory effect but with much greater effectiveness in hot climates.



2 WAY STRETCH

The two fabric bases that make up the "White Collection" along with all the fabrics that we are currently developing are based on a cotton base, CoolMax® polyester and INVISTA Lycra® spandex. The percentage of elastane can vary but the result will always be a comfortable and elastic garment. The use of Lycra® fibre guarantees exceptional elasticity with a very careful memory effect and its elastic qualities maintained wash after wash.

*We need
the garment we are wearing
to **respond.***



EASY CARE

Our clothes can be put in a washing machine, use normal detergents, are fast-drying, they can be washed in programmed short cycles, they iron easily at moderate temperatures... You don't need to do anything special to have a perfect shirt, with normal care you'll have a garment that will accompany you for many years.

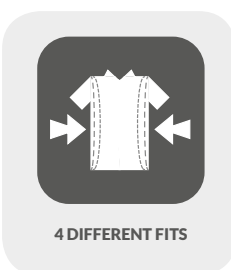


EASY IRON

CoolMax® is ultimately a polyester spinning which makes the care and ironing of your clothes much easier. All our shirts, in any case, have easy finish ironing so ironing your clothes is not a problem.



- o Extra-form-fitting (Tailored), very tight garments, ideal for small figures.
- o Form-fitting (Slim), which leads to tight-fitting garments with a cut designed to avoid any excess fabric while being worn. With two seams on the back to help to give a better outline of the shirt.
- o Semi-form-fitting (Regular), a tight cut but loose at the same time, with a traditional yet measured cut, a perfect middle ground, without pleats at the back.
- o Normal (Traditional), a relaxed, loose and comfortable cut, the traditional cut, for those who don't like to feel a tight garment, two pleats at the back provide extra roominess, generous sleeves.



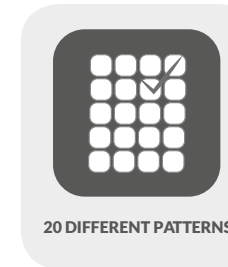
We make all our garments in four different fits, which easily adapt to the user's body, thanks to our elastic fabric, providing comfort.

There are special events that require a

special elegance

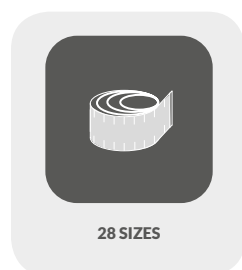
and in which we are subjected to many emotions ...

Choosing the right garment can make the difference between comfort and discomfort



20 DIFFERENT PATTERNS

Style & Tech is fashion, it's design, we are committed to "Slow Fashion", the sustainability that comes from a garment not being used for a season then thrown away, but we don't go in for uniformity and boredom. Our "White Collection" offers more than twenty different designs focused on the simple concept that every man should have at least one white shirt in his wardrobe. More than twenty different white shirt designs that try to cover the personal style of each in any situation.



28 SIZES

We manufacture seven sizes for each fit we make, four fits, by seven sizes give a total of twenty-eight sizes. We offer the perfect shirt for every man on every occasion, we are sure that with twenty-eight sizes we are on the path to achieving this goal.

*In some of
the most important hours
of our life.*

In the global world in which we are immersed, with a rise of global temperatures more than patent, with abrupt changes in the climate ...



We manufacture up to size 4XL, we specialise in shirts, we want to offer a comprehensive service and for everyone to have access to our clothes.

*... which make us go
from one extreme to another
sometimes without warning*



It is important to know where the goods that you consume are produced. No matter the country, fortunately things are done better and better whatever their country of origin. Spain has a huge and rich textile tradition, both industrial and cultural, of which we are proud, but what really matters is that you can choose, having all the information, to know what you are buying, and to know because rules govern the manufacturer that is chosen to consume any given product.

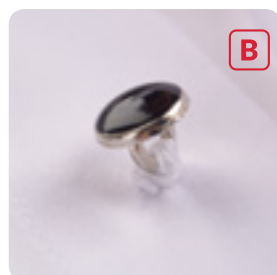
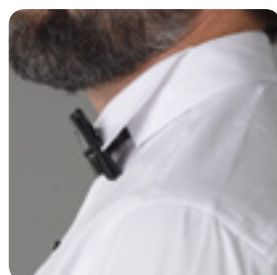
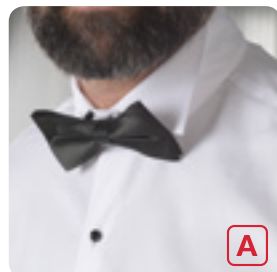


We are proud that all our raw materials and our production processes are carried out in Spain, that we respect and support the compliance with the ETHICAL STANDARDS, as set out in the United Nations Global Compact.



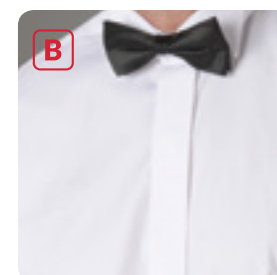
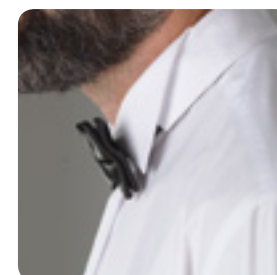
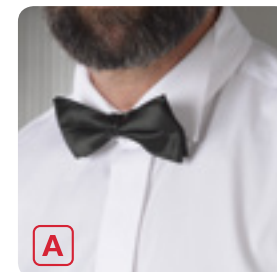
That can catch us working or sightseeing (hopefully combining both), in very different environments ...

*We need garments that adapt and help us
in **extreme situations**
of heat, of continuous use ...*



- A Bow tie collar.
- B Hand-sewn buttons.

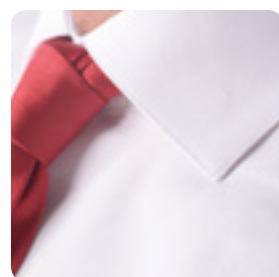
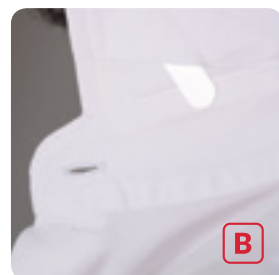
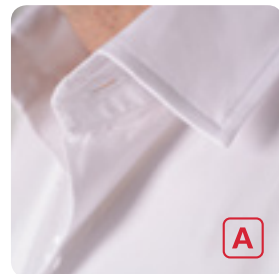
Shirt reference: MEYER
 Fabric reference: 500 - Plana Coolmax® - Lycra®
 Composition: 74% Cotton.- 20% PES Coolmax®.- 6% Elastane (Lycra®)
 Weight: 105 g/m2
 Description: Shirt with a bow tie collar with a double cuff to be used with a suit, tailcoat, or penguin suit. Hand-sewn facing with contrasting buttons.
 * Cufflinks and bow tie not included.



- A Bow tie collar.
- B Facing with hidden buttons.

Shirt reference: BOYER
 Fabric reference: 500 - Plana Coolmax® - Lycra®
 Composition: 74% Cotton.- 20% PES Coolmax®.- 6% Elastane (Lycra®)
 Weight: 105 g/m2
 Description: Shirt with a bow tie collar with a double cuff to be used with a suit, tailcoat, or penguin suit. Chest facing with hidden button set.





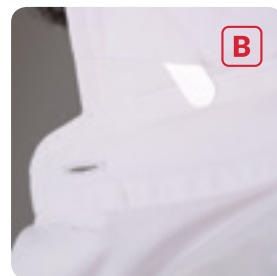
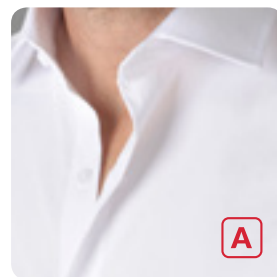
Shirt reference: DEPALMA
 Fabric reference: 500 - Plana Coolmax® - Lycra®
 Composition: 74% Cotton.- 20% PES Coolmax®.- 6% Elastane (Lycra®)
 Weight: 105 g/m2
 Description: Shirt with dress collar with dress cuff. The cuff has two buttonholes; if you want to remove the buttons it can be used with cufflinks. Removable neck reinforcement rods.
 * Tie not included.

- A** Dress collar.
- B** Removable rods.



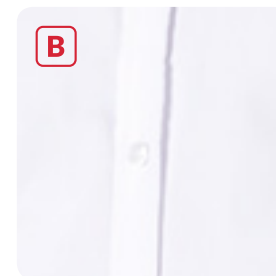
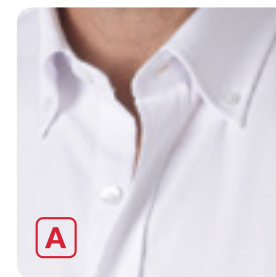
- C** Double cuff for cufflinks.

Shirt reference: SOUDERS
 Fabric reference: 500 - Plana Coolmax® - Lycra®
 Composition: 74% Cotton.- 20% PES Coolmax®.- 6% Elastane (Lycra®)
 Weight: 105 g/m2
 Description: Dress collar shirt with double cuff for cufflinks. Removable neck reinforcement rods.



- A Dress collar.
- B Removable rods.

Shirt reference: ARNOLD
 Fabric reference: 805 - Oxford Coolmax® - Lycra®
 Composition: 54% Cotton.- 42% PES Coolmax®.- 4% Elastane (Lycra®)
 Weight: 150 g/m2
 Description: Shirt with dress collar with dress cuff. The cuff has two buttonholes; if you want to remove the buttons it can be used with cufflinks. Removable neck reinforcement rods. Dress pocket.

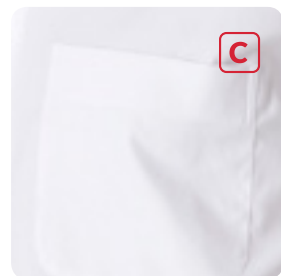


- A Sport collar with button.
- B Facing.

Shirt reference: MAURI
 Fabric reference: 805 - Oxford Coolmax® - Lycra®
 Composition: 54% Cotton.- 42% PES Coolmax®.- 4% Elastane (Lycra®)
 Weight: 150 g/m2
 Description: Shirt with a sport collar with a button Italian model. The cuff has two buttonholes; if you want to remove the buttons it can be used with cufflinks. With facing on chest.



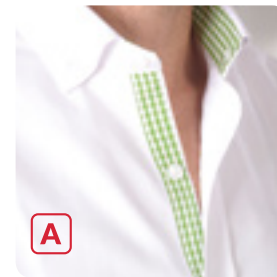
Shirt reference: LOCKHART
 Fabric reference: 805 - Oxford Coolmax® - Lycra®
 Composition: 54% Cotton.- 42% PES Coolmax®.- 4% Elastane (Lycra®)
 Weight: 150 g/m2
 Description: Shirt with a sport collar with a button traditional model. The cuff has two buttonholes; if you want to remove the buttons it can be used with cufflinks. With a facing on chest, with a pocket.



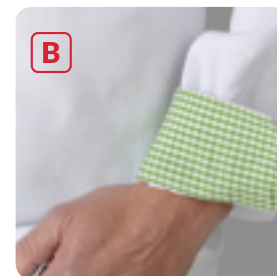
C Pocket.



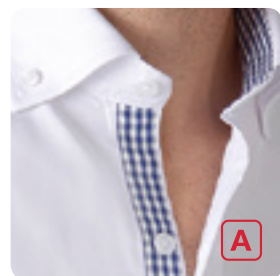
Shirt reference: HARROUN - 5
 Fabric reference: 805 - Oxford Coolmax® - Lycra®
 Composition: 54% Cotton.- 42% PES Coolmax®.- 4% Elastane (Lycra®)
 Weight: 150 g/m2
 Description: Shirt with a sport collar with a button Italian model, with a facing on chest, sport cuff. Contrasts Vichy checks on inside neck strip, facing buttons until the third button and inside of cuffs.



A Inside vichy contrast.



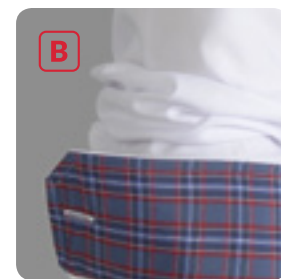
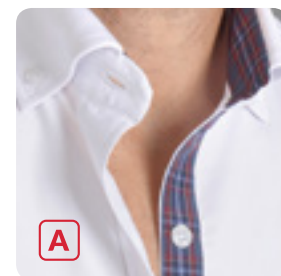
B Sport cuff.



A Inside vichy contrast.

B Sport cuff.

Shirt reference: HARROUN - 4
 Fabric reference: 805 - Oxford Coolmax® - Lycra®
 Composition: 54% Cotton.- 42% PES Coolmax®.- 4% Elastane (Lycra®)
 Weight: 150 g/m2
 Description: Shirt with a sport collar with a button Italian model, with a facing on chest, sport cuff. Contrasts Vichy checks on inside neck strip, facing buttons until the third button and inside of cuffs.

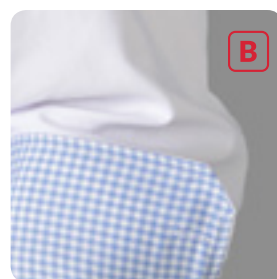
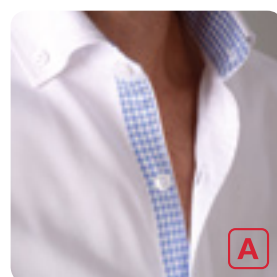


A Inside contrast.

B Sport cuff.

Shirt reference: MILTON - 2
 Fabric reference: 805 - Oxford Coolmax® - Lycra®
 Composition: 54% Cotton.- 42% PES Coolmax®.- 4% Elastane (Lycra®)
 Weight: 150 g/m2
 Description: Shirt with a sport collar with a button Italian model, with a facing on chest, sport cuff. Fabric contrasts Wales on inside neck strip, facing buttons until the third button and inside of cuffs. Buttonholes stitched in thread contrast with button stitched in contrasting thread.

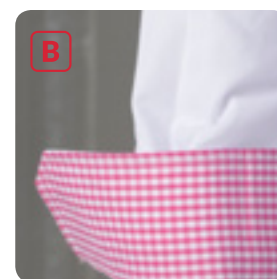
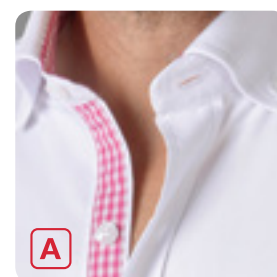




A Inside vichy contrast.

B Sport cuff.

Shirt reference: HARROUN – 3
 Fabric reference: 805 - Oxford Coolmax® - Lycra®
 Composition: 54% Cotton.- 42% PES Coolmax®.- 4% Elastane (Lycra®)
 Weight: 150 g/m2
 Description: Shirt with a sport collar with a button Italian model, with a facing on chest, sport cuff. Contrasts Vichy checks on inside neck strip, facing buttons until the third button and inside of cuffs.

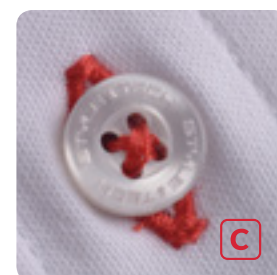
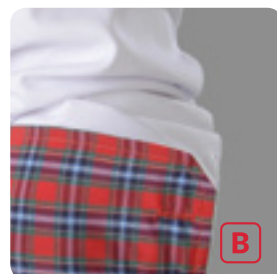
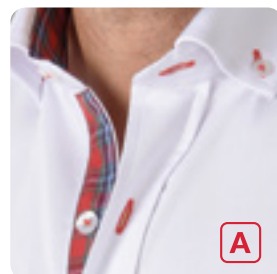


A Inside vichy contrast.

B Sport cuff.

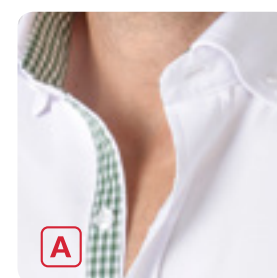
Shirt reference: HARROUN – 7
 Fabric reference: 805 - Oxford Coolmax® - Lycra®
 Composition: 54% Cotton.- 42% PES Coolmax®.- 4% Elastane (Lycra®)
 Weight: 150 g/m2
 Description: Shirt with a sport collar with a button Italian model, with a facing on chest, sport cuff. Contrasts Vichy checks on inside neck strip, facing buttons until the third button and inside of cuffs.





Shirt reference: MILTON - 1
 Fabric reference: 805 - Oxford Coolmax® - Lycra®
 Composition: 54% Cotton.- 42% PES Coolmax®.- 4% Elastane (Lycra®)
 Weight: 150 g/m2
 Description: Shirt with a sport collar with a button Italian model, with a facing on chest, sport cuff. Fabric contrasts Wales on inside neck strip, facing buttons until the third button and inside of cuffs. Buttonholes stitched in thread contrast with button stitched in contrasting thread.

- A** Inside vichy contrasts.
- B** Sport cuff.
- C** Button sewn with red spinning.



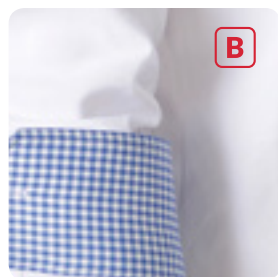
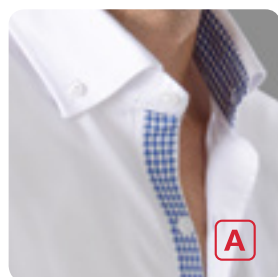
- A** Inside vichy contrasts.
- B** Sport cuff.



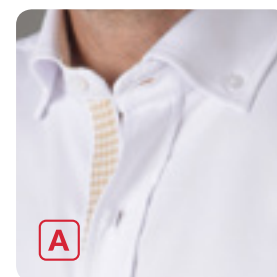
Shirt reference: HARROUN - 6
 Fabric reference: 805 - Oxford Coolmax® - Lycra®
 Composition: 54% Cotton.- 42% PES Coolmax®.- 4% Elastane (Lycra®)
 Weight: 150 g/m2
 Description: Shirt with a sport collar with a button Italian model, with a facing on chest, sport cuff. Contrasts Vichy checks on inside neck strip, facing buttons until the third button and inside of cuffs.



Shirt reference: HARROUN – 2
 Fabric reference: 805 - Oxford Coolmax® - Lycra®
 Composition: 54% Cotton.- 42% PES Coolmax®.- 4% Elastane (Lycra®)
 Weight: 150 g/m2
 Description: Shirt with a sport collar with a button Italian model, with a facing on chest, sport cuff. Contrasts Vichy checks on inside neck strip, facing buttons until the third button and inside of cuffs.



A Inside vichy contrasts.
B Sport cuff.



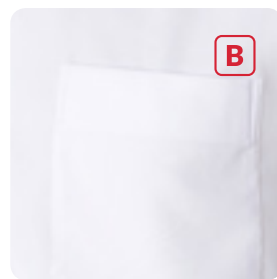
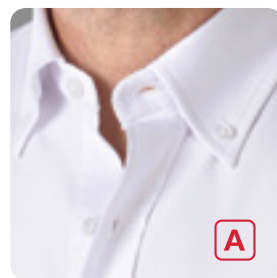
A Inside vichy contrasts.
B Sport cuff.



Shirt reference: HARROUN – 1
 Fabric reference: 805 - Oxford Coolmax® - Lycra®
 Composition: 54% Cotton.- 42% PES Coolmax®.- 4% Elastane (Lycra®)
 Weight: 150 g/m2
 Description: Shirt with a sport collar with a button Italian model, with a facing on chest, sport cuff. Contrasts Vichy checks on inside neck strip, facing buttons until the third button and inside of cuffs.



Shirt reference: GOUX
 Fabric reference: 805 - Oxford Coolmax® - Lycra®
 Composition: 54% Cotton.- 42% PES Coolmax®.- 4% Elastane (Lycra®)
 Weight: 150 g/m2
 Description: Sport collar with button model traditional shirt, short sleeve, with facing on chest pocket.

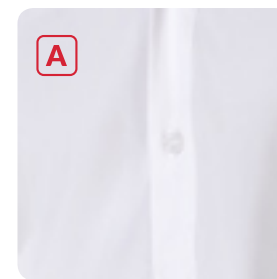


A Sport collar with button.

B Pocket.



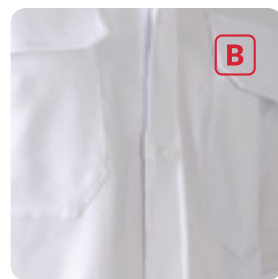
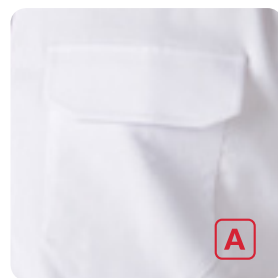
Shirt reference: PETILLO
 Fabric reference: 500 - Plana Coolmax® - Lycra®
 Composition: 74% Cotton.- 20% PES Coolmax®.- 6% Elastane (Lycra®)
 Weight: 105 g/m2
 Description: Polo-type shirt with three-button facing, long sleeve, sport neck without button. The cuff has two buttonholes; if you want to remove the buttons it can be used with cufflinks.



A Three-button facing.

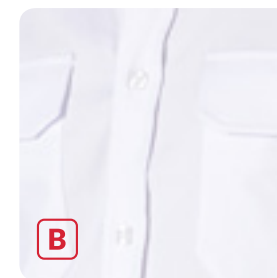
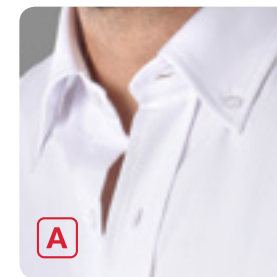


Shirt reference: SHAW
 Fabric reference: 805 - Oxford Coolmax® - Lycra®
 Composition: 54% Cotton.- 42% PES Coolmax®.- 4% Elastane (Lycra®)
 Weight: 150 g/m2
 Description: Sport neck with button Italian model, short sleeve pinch, with facing on chest, two pockets with enclosure flap.



A Two pockets.

B Facing.



A Sport collar with button.

B Two pockets.

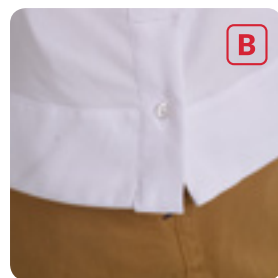
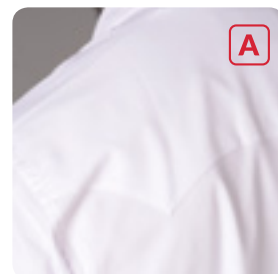
C Facing.



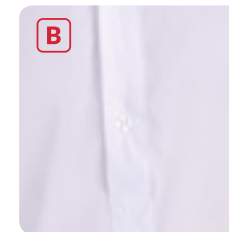
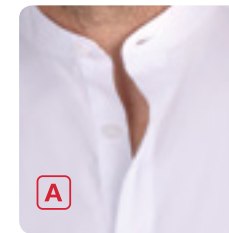
Shirt reference: KEECH
 Fabric reference: 805 - Oxford Coolmax® - Lycra®
 Composition: 54% Cotton.- 42% PES Coolmax®.- 4% Elastane (Lycra®)
 Weight: 150 g/m2
 Description: Collar shirt sport button traditional model, with facing on chest, two pockets with enclosure flap, sleeve retainer with ribbon and button.



Shirt reference: DEPAOLO
 Fabric reference: 805 - Oxford Coolmax® - Lycra®
 Composition: 54% Cotton.- 42% PES Coolmax®.- 4% Elastane (Lycra®)
 Weight: 150 g/m2
 Description: Guayabera-type shirt with a sport neck without button. Four pockets, side vents with button, turn-ups on front, with facing, sleeve retainer with ribbon and button.

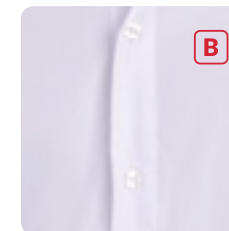
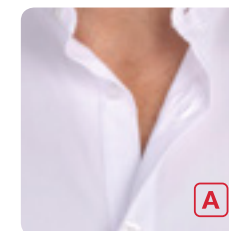


- A** Back detail.
- B** Side opening.
- C** Cuff with pick up sleeves.



- A** Mao neck.
- B** Three button facing .

Shirt reference: HOLLAND
 Fabric reference: 500 - Plana Coolmax® - Lycra®
 Composition: 74% Cotton.- 20% PES Coolmax®.- 6% Elastane (Lycra®)
 Weight: 105 g/m2
 Description: Polo-type shirt with three-button facing, short sleeve, Mao neck.



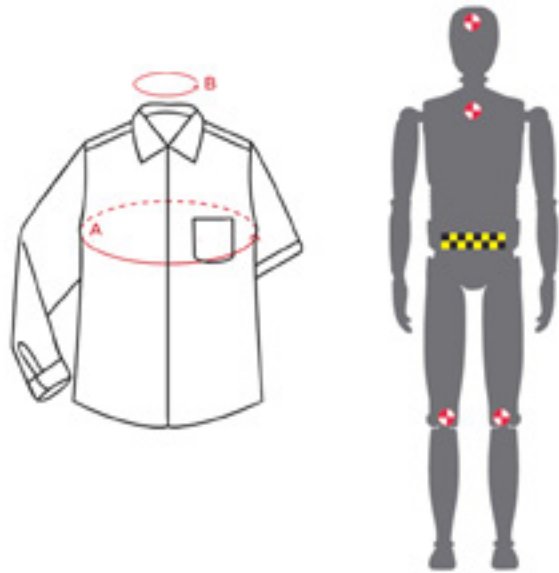
- A** Mao neck.
- B** Two-button facing.

Shirt reference: WALLARD
 Fabric reference: 500 - Plana Coolmax® - Lycra®
 Composition: 74% Cotton.- 20% PES Coolmax®.- 6% Elastane (Lycra®)
 Weight: 105 g/m2
 Description: Polo-type shirt with two-button facing, long sleeve, Mao neck. The cuff has two buttonholes; if you want to remove the buttons it can be used with cufflinks.



EUROPEAN SIZES

Regular Fit



Size	Chest A	Neck B
S	44	14 ^{1/2} - 15
M	45 ^{3/4}	15 ^{1/2} - 16
L	47 ^{1/2}	16 ^{1/2} - 16 ^{3/4}
XL	49 ^{3/4}	17 - 17 ^{1/2}
2XL	51 ^{1/2}	18 - 18 ^{1/2}
3XL	54 ^{1/4}	18 ^{3/4} - 19 ^{1/2}
4XL	56 ^{1/2}	20 - 20 ^{1/2}

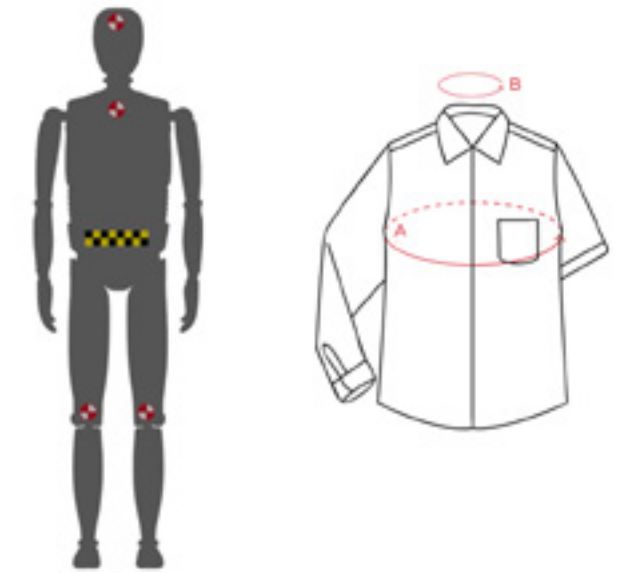
In

Size	Chest A	Neck B
S	112	37 - 38
M	116	39 - 40
L	122	41 - 42
XL	126	43 - 44
2XL	130	45 - 46
3XL	138	47 - 48
4XL	144	49 - 50

Cm

AMERICAN SIZES

Traditional Fit



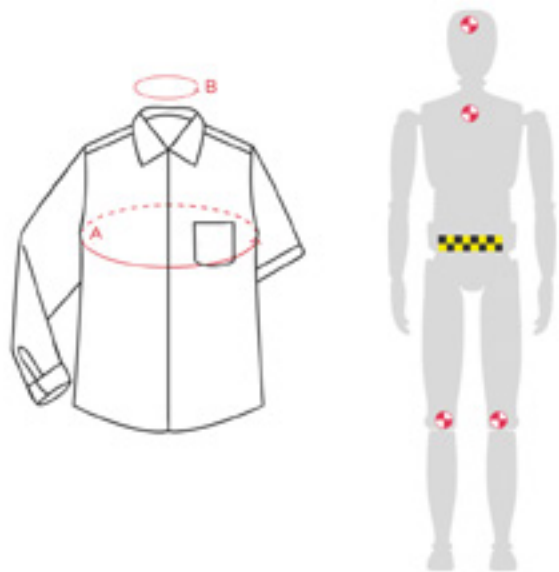
Size	Chest A	Neck B
S	44	14 - 14 ^{1/2}
M	48	15 - 15 ^{1/2}
L	52	16 - 16 ^{1/2}
XL	56	17 - 17 ^{1/2}
2XL	60	18 - 18 ^{1/2}
3XL	64	19 - 19 ^{1/2}
4XL	68	20 - 20 ^{1/2}

In

Size	Chest A	Neck B
S	112	37 - 39
M	122	40 - 41
L	132	42 - 43
XL	142	44 - 45
2XL	152	46 - 47
3XL	162	48 - 49
4XL	172	50 - 51

Cm

Tailored Fit



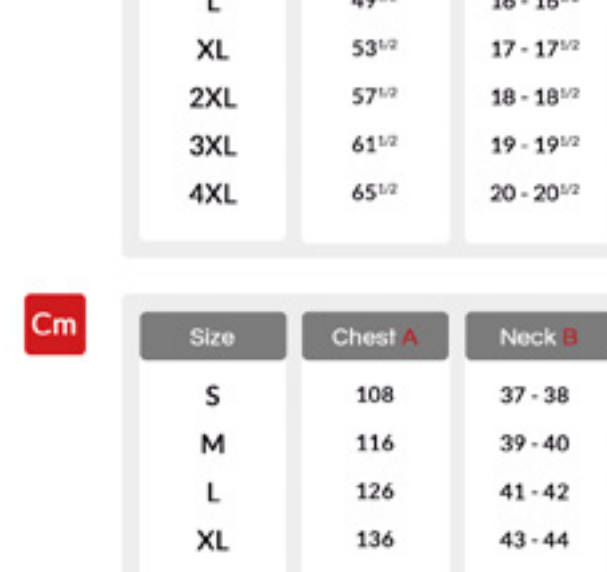
Size	Chest A	Neck B
S	42	14 ^{1/2} - 14 ^{3/4}
M	44	15 - 15 ^{1/2}
L	45	16 - 16 ^{1/2}
XL	46	16 ^{1/2} - 17
2XL	48	17 ^{1/2} - 18
3XL	49	18 ^{1/2} - 19
4XL	51	19 ^{1/4} - 19 ^{3/4}

In

Size	Chest A	Neck B
S	106	36 - 37
M	110	38 - 39
L	114	40 - 41
XL	118	42 - 43
2XL	122	44 - 45
3XL	126	46 - 47
4XL	130	48 - 49

Cm

Tailored Fit



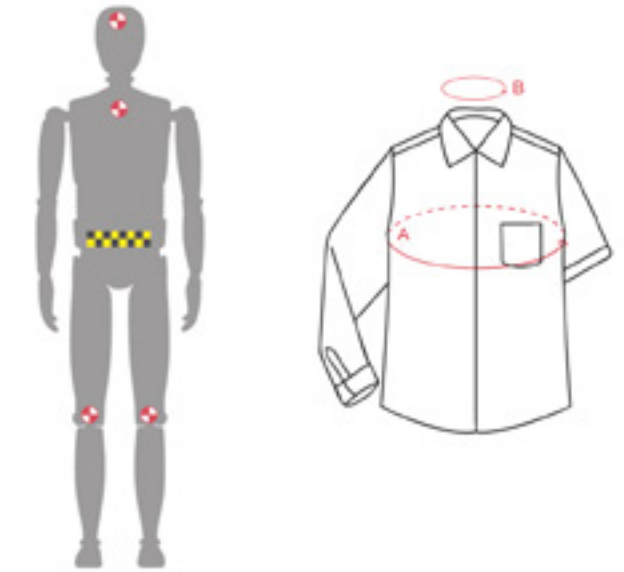
Size	Chest A	Neck B
S	41 ^{1/2}	14 - 14 ^{1/2}
M	45 ^{1/2}	15 - 15 ^{1/2}
L	49 ^{1/2}	16 - 16 ^{1/2}
XL	53 ^{1/2}	17 - 17 ^{1/2}
2XL	57 ^{1/2}	18 - 18 ^{1/2}
3XL	61 ^{1/2}	19 - 19 ^{1/2}
4XL	65 ^{1/2}	20 - 20 ^{1/2}

In

Size	Chest A	Neck B
S	108	37 - 38
M	116	39 - 40
L	126	41 - 42
XL	136	43 - 44
2XL	146	45 - 46
3XL	156	47 - 48
4XL	164	49 - 50

Cm

Slim Fit



During the production process, the body length and the length of sleeves are adaptable up to + or - 10 centimeters.

During the production process, the body length and sleeve length are adjustable up to + or - 4 inches.

Fabrics used by Style & Tech in the “White Collection”

Style & Tech uses two basic fabrics in this collection, a woven flat type, our Ref. 500 and an oxford-type fabric, our Ref. 805.

These fabrics, though they have different appearances, touch and composition, offer similar laboratory-tested technical results. Style & Tech has minimum requirements that both meet equally, for example both have certificates with UPF 50+, Ret <3.1m2Pa/W (for calculating perspiration capacities), etc., among other multiple parameters.

They are suitable for use throughout the year, their special technical qualities will come more to the fore when it is hotter, but with continued global warming, and the option of using items in occasional sporting or physical activities, travel, etc., will make both fabrics good travelling companions 365 days a year.

The biker, who goes to work on a bike, he who plays basketball with his friends on leaving work, who spends long periods behind a wheel, the executive who is used to catching planes, who works in healthcare settings, he who can spend long periods crushed into any type of public transport, etc., will all, along with many others, be enormously grateful for the continued use of any of our two fabrics.



- Reference: 500 - Plana Coolmax® - Lycra®
- Composition: 74% Cotton.- 20% PES Coolmax®.- 6% Elastane (Lycra®)
- Weight: 105 g/m

The flat fabric has extra fine spinning, the lighter one has a super soft finish and touch, which makes it ideal for straight-forward dress shirts or extremely smart casual shirts, with a drape and a man fit for the most exquisite tastes. Two Lycra® stitches they have over and above our Oxford quality give it additional elasticity that is ideal for a snugger fit of shirt.

- Reference: 805 - Oxford Coolmax® - Lycra®
- Composition: 54% Cotton.- 42% PES Coolmax®.- 4% Elastane (Lycra®)
- Weight: 150 g/m2

Oxford-type fabric, pinpoint type, has a higher percentage of CoolMax® spinning to compensate for the purposes of perspiration for the fact it's heavier than the flat fabric. We have focused this fabric on more casual shirts, to more elaborately made garments with a pocket or contrasting fabrics. They are more resistant, more informal, with a more informal drape and hand, with an excellent touch.

Certified by





FAQ

Why a car as a logo?

Because we understand that in the car world, each launch comes with a multitude of features with which we identify: increased technological capabilities, constant revolution towards greater sustainability, greater awareness of the environment, clean energy, gigantic doses of design and creativity, an emotional component in the purchasing process, a personal brand reflected in the choice made...

Why is everything white in this collection?

It is a declaration of intent on the one hand and it has a practical element on the other. The shirt is the essence of menswear, and all men must have at least a couple of white shirts in his wardrobe, one casual and one dress shirt. These two white shirts are the paradigm of sustainable fashion, they should last over time, they do not go out of fashion and unless they tear, we can't do without them. Our goal is that every man, when choosing those at least two white shirts, which he should have at the back of his wardrobe, representatives of the concept of sustainable fashion, bears us in mind as a model. The decision to launch this "White Collection" as a statement of intent has a very practical side effect: to certify all the technical features of our fabrics in a laboratory is a slow and expensive process, quality is much more controllable and we can be much more demanding, taking care not to expand our range too much in terms of weaving.

Where did this technology come from?

The technology we use is of Spanish, Swiss and American origin, it has been widely tested and used, normally in the uniform, sportswear and mountainwear sector. What we are really doing is transferring technology that is 100% tested and efficient in other sectors to the fashion sector, providing tradition and the know-how of four generations who have spent their working lives in the textile world.

What inspired the corporate image?

We have designed a corporate image that seeks to convey modernity, sustainability, technology and fashion at the same time. Since this is a project that is also aesthetically related to the world of automobiles, we wanted to use, among other elements, aluminium as the unifying background. Aluminium is a long-lasting metal and 100% recyclable (it also has a very fast recycling process, an aluminium tin that's thrown away can be back on a store's shelf in just six weeks), recycling only needs 5% of the original energy input, which saves significant amounts of CO2 emissions.

Aluminium is also a critical element at present for the world of automobiles, due to the need to lighten the weights of the cars to lower consumption to achieve more eco-friendly products, more and more models have more and more pieces of aluminium in their construction, including bodywork made wholly with aluminium.

