

# January 2018 Monthly Newsletter



2790 Sirhal Drive  
East Lansing, MI 48823  
[www.meridianstratford.com](http://www.meridianstratford.com)



## Community Staff

Lisa Darrow, Community Manager  
Eldean Hummel, Maintenance  
Elynn Hummel, Maintenance

## Office Information

Office Phone: (517) 333-2472  
Office Fax: (517) 333-7179

## Office Hours

Monday, Thurs, Friday: 2:00PM - 5:30PM  
Tuesday & Wednesday 9:00AM-12:30PM  
Saturday: Closed  
Sunday: Closed

## Important Phone Numbers

Poison Control: (800) 222-1222  
Non-Emergency Police Department:  
(517) 347-5060  
Emergency Maintenance: (517) 333-2472  
Emergency Fire, Police or Ambulance:  
911

## Community Reminder

Late Fees applied on the 6th-Files to attorney on the 10th.

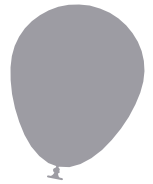
Medical Appointment Transportation Available FREE within Ingham, Clinton and Eaton Counties. Contact William at 517-333-3282. Advanced notice required.

## CADL Bookmobile

Sign up ahead of time and have fun and exciting movies or books delivered to you. Call (517) 334-1530 to sign up today!



*Happy Birthday to  
our residents!*



David M., 6th  
William S., 10th  
Joan M., 15th

Susan A., 20th  
Lois W., 21st  
Wilfredo T., 24th

Sister Gean G., 27th  
Shirley W., 31st  
Tina P., 31st

## Birthday Potluck

Friday, January 19th at 1:00PM

## Maintenance

All work orders must be submitted in writing or entered into the resident portal. Only emergencies are to be called into the office. You can access the resident portal by clicking on the residents tab on our website, [www.meridianstratford.com](http://www.meridianstratford.com). Please let us know if you need assistance with creating your resident portal account.

## Community Reminders

Remember to check the bulletin board on the first floor for additional information and / or events!

**Thank You** to all our residents who renewed their lease! We're excited that you continue to make Meridian Stratford Place your home. And a BIG Welcome to ALL our new residents! We are happy that you chose Meridian Stratford Place to be your home!

# JANUARY 2018

Sunday	Monday	Tuesday	Wednesday	Thursday	Friday	Saturday	
	Rent Due! 1 Office Closed  Walmart Shuttle 1:05PM & 3:55PM  Exercise 3rd Floor 3:00PM-5:00PM  New Year's Day	2  Pest Control  Shopping Bus 12:20PM  Bingo 1:30PM	3  Schwan's Home Service 11:00AM-2:00PM  Book Mobile 1:00PM-1:30PM	4  Walmart Shuttle 1:05PM & 3:55PM	5  Euchre 7:00PM  Rent is Late! Late Fees Applied	6	
7	8  Walmart Shuttle 1:05PM & 3:55PM	9  Shopping Bus 12:20PM  Bingo 1:30PM	10  Book Mobile 1:00PM-1:30PM	11  Blood Pressure Check-3rd floor 11AM  Walmart Shuttle 1:05PM & 3:55PM	12	13	
14	15  Walmart Shuttle 1:05PM & 3:55PM  Exercise 3rd Floor 3:00PM-5:00PM  Martin Luther King Jr's Birthday	16  Shopping Bus 12:20PM  Bingo 1:30PM	17  Schwan's Home Service 11:00AM-2:00PM  Book Mobile 1:00PM-1:30PM	18  Walmart Shuttle 1:05PM & 3:55PM	19  Birthday Potluck 1:00PM	20	
21	22  Walmart Shuttle 1:05PM & 3:55PM	23  Shopping Bus 12:20PM  Bingo 1:30PM	24  Book Mobile 1:00PM-1:30PM	25  Blood Pressure Check-3rd floor 11AM  Walmart Shuttle 1:05PM & 3:55PM	26	27	
28	29  Walmart Shuttle 1:05PM & 3:55PM  Exercise 3rd Floor 3:00PM-5:00PM	30  Shopping Bus 12:20PM  Bingo 1:30PM	31  Schwan's Home Service 11:00AM-2:00PM  Book Mobile 1:00PM-1:30PM	We would like to wish all of our Residents Happy New Years ! Our office will be closed January 1st in observance to New Years!			



# January Word Search



A H W X S T D W K V Z B W C Z  
 W G B D V R E M O Y D L B Q Q  
 N O B R E V I K W W E I O A P  
 C C U T F T L J C J Z Z D V X  
 U P N Z T T H F Y A O Z B O D  
 F I R E W O R K S S J A V D Z  
 W N N K T N Q K E E H R N E T  
 W S E X Y T F K A E N D V W Y  
 P M I W N D A N T D D H I C M  
 V E E T Y L I C I C L E Y K S  
 A P E N F E G G M C G F U P E  
 R L B W O Z A N A M W O N S T  
 I I O Z E O K R Z C O H P N A  
 U N K B W U P C S Y V R R F K  
 S P C Q V F X F L R Y C Y B S

FIREWORKS

MITTENS

JACKET

SNOWFLAKES

NEW YEARS



BLIZZARD

SKATES

SNOWMAN

WINTER

ICICLE