

COMPANY PROFILE

In a world of Technology, Top-Passive make the Difference



Top-Passive

MESSAGE FROM THE MANAGING DIRECTOR

It is my great pleasure to introduce Top-Passive Company, a leading system integrator within the Information & Communication Technologies as well as the Low Current and Security System industries. The aim of our organization is not simply to meet our customer's expectations, but to surpass them, proving our dedication to our clients and their goals. We are proud that this hard work has been acknowledged by our prestigious clients and their top-level executives that continue to work with us and refer us to others.

Top-Passive operates as a cohesive and seamless team and, as such, every member of our organization is highly skilled and vital to our customer's projects. We believe in investing in these professionals, each of which adds tremendous value to the reputation that Top-Passive has built. After all, our team is our most valuable asset and a clear competitive advantage that should encourage customers to choose Top-Passive over other organizations. In this highly competitive industry, Top-Passive is proud to be on a growth trajectory with sustainable profitability. Stagnation is not our priority; leading the industry is our prerogative.

Since our inception in 2022, Top-Passive has been honored to serve a variety of industries in fulfilling their ICT, Low Current and Security System needs and requirements. We look forward to maintaining our current customer relationships while also expanding our capabilities to serve new clients in exciting industries. At Top-Passive, our biggest compliment is the referrals that our customers give us, confident in our services and our ability to surpass expectations with our deliverables.

YOURS SINCERELY,

Fady M. Adib Yousef

Contents

04

INTRODUCTION

09

PRODUCTS & SERVICES

22

SOLUTIONS

32

PARTNERS

33

ORGANIZATIONAL STRUCTURE

34

CLIENTS LIST

35

OUR PROJECTS

38

LICENSES & CERTIFICATIONS

INTRODUCTION

Top-Passive was founded in 2022 and is headquartered in Abu Dhabi, United Arab Emirates.

Establishing a professional system integrator for ICT, Low Current, and Security System solutions within the United Arab Emirates. Now, we are happy to be expanding within the GCC and further across the Middle East. The organization is known as one of the leading system integrators today, providing customers with turn-key solutions to their challenges, from initial sketches to installation and testing, and even later to commissioning and after-sales service.

Our team consists of some of the most highly-qualified, talented, and experienced engineers and professionals. The organization plans, designs, implements, and manages these key ICT, Low Current, and Security System solutions for your business. Top-Passive is proactive in providing a set of proven solutions, services, and support within the region. In turn, these elements positively affect the bottom line of our clients by impacting their competitive edge. The partnerships we are building with leading manufacturers of ICT, Low Current and Security System products and services will help us to pass these savings on to our customers

VISION

To become a world-renewed top of mind proactive leader in the ICT and Low Current industry through our dedication to our customers and the products and services that we offer.

Management Philosophy

Basic Management Objective

Recognizing our responsibilities as industrialists, we will devote ourselves to the progress and development of society and the well-being of people through our business activities, thereby enhancing the quality of life throughout the world.

Company Creed

Progress and development can be realized only through the combined efforts and cooperation of each employee of our company. United in spirit, we pledge to perform our corporate duties with dedication, diligence and integrity.

Seven Principles

Contribution to Society, Fairness and Honesty, Cooperation and Team Spirit, Untiring Effort for Improvement, Courtesy and Humility, Adaptability, Gratitude

Foundation of activities of management:

Immutable

MISSION

Our purpose is to deliver optimized turn-key solutions to our clients through innovation, treating our customers the same way we would want our vendors to treat us. Ensuring quality through our partnerships with leaders in the industry, as well as the cohesive and competitive a workforce that we have developed, will guarantee that this mission is realized.

VALUE PROPOSITION

Top-Passive highly skilled, trained, and motivated team customizes its unique products and creative solutions to the needs of our clients. It's our team that allows our organization to exceed the high standards of customer satisfaction that our clients demand. We look forward to working together with your organization to understand your business objectives and put systems in place to ensure your goals are realized. We want our team to be part of your team as well.

SAFETY, TRAINING, & CERTIFICATIONS

Occupational Safety & Health Administration

Top-Passiv provides a safe work environment that complies with the standards, rules, and regulations under the OSH Act of 2011 and its relevant laws. We ensure training for our employees with the established and updated procedures to assure that they follow the safety and health requirements on your job site. With on-site safety equipment, proper tools, and maintenance, we uphold sound environments wherever we work, through NEBOSH-certified technicians who oversee and perform installations to the highest standards.

Industry and Supplier Certifications

The importance of upholding technical standards is critical to our commitment to delivering the most advanced ICT/ELV/AV solutions.





QUALITY ASSURANCE

- Provide products & services that meet customer and regulatory requirements.
- Enhance customer satisfactions.
- Complies with Contractual obligations, international standards, customer's needs and specifications.



OCCUPATIONAL HEALTH & SAFETY COMMITMENT

- Implemented as an integrated management system within Top-Passive.
- Fulfilling and meeting all requirements of the international standards. Prevention of injury and ill health.
- Increase safety awareness and motivation amongst employees.



ENVIRONMENTAL COMMITMENT

- Protection of the environment including, prevention of environmental pollution.
- Setting up effective and efficient controls that minimize environment incidents and pollution.
- Our commitment aims to define a reliable approach for Top-Passive to identify and manage environmental risks and take advantage of environmental opportunities.



Smart Infrastructure

Building the Future Today

Smart Infrastructure supports the way we all want to live – happily, comfortably, sustainably, and in harmony. It supports the way industry and organizations want to be – efficient, responsible, and smarter. Technology and the ingenuity of people come together to be one with our environment and to care for our world.





THE MOST COMPREHENSIVE TECHNOLOGY SERVICES IN THE INDUSTRY

The Top-Passive. team is dedicated to ensuring your ICT/ELV/AV and IT technology systems operate at peak performance. Our staff is the most thoroughly trained and experienced in the industry to best understand and solve your ICT and ELV and AV needs.

When you work with us, you obtain the highest quality communication and presentation solutions available. Our passion for technology applications is reflected in the extensive scope of services we offer to business, education, healthcare, and government entities. We don't just put technology in a building. We help you achieve cost savings through our consulting and needs analysis, as well as support, training, and maintenance. Read on to discover the many service solutions Top-Passive. provides.



Consulting and Needs Analysis

Our experienced consultants are trusted technology advisors

We realize that planning for technology improvements can be a challenge when faced with the complex options available. Top-Passive, L.L.C. can help explain these solutions. We will perform a thorough analysis of the system requirements and work with you to define your project goals.

Our consulting process begins with a comprehensive survey of your project site or blueprints. We will evaluate the compatibility of existing components when applicable and conduct a thorough needs analysis to develop a project scope and preliminary budget. We will advise you on upgrades and options available with a view toward a design that will be compatible with technology trends so your configuration will be a lasting investment.

Many projects involve architects and interior designers. We work directly with these professions to ensure the ceiling heights, seating arrangements, lighting, and other elements are aligned with your requirements. We also work closely with your engineering department and building trades to ensure the HVAC, electrical, and other facility systems are compatible with your new technology.

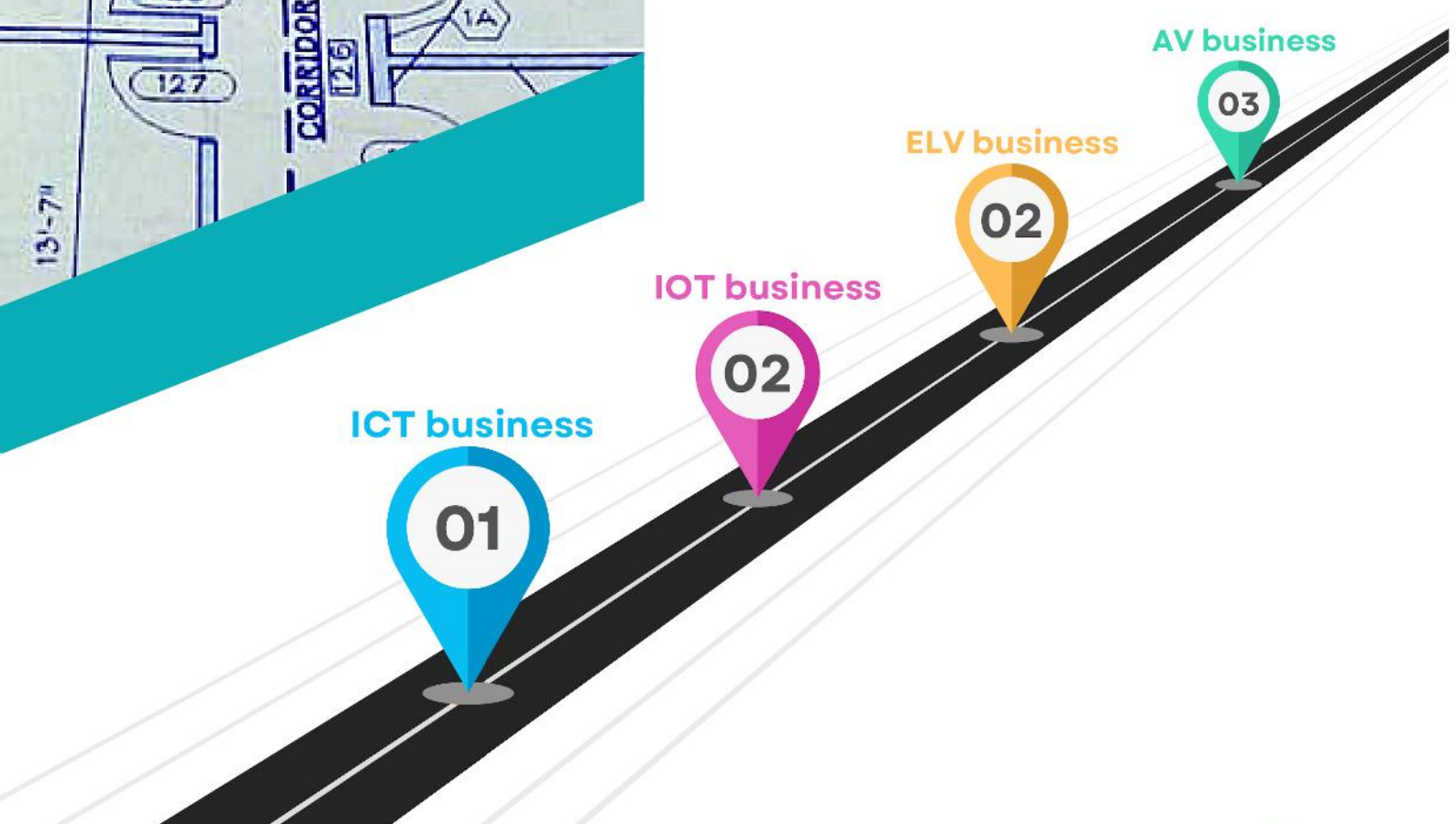
If your project requires a bid process, our consulting team can be called on to provide bid documentation for a complete system. We will generate a scope of work, preliminary drawings, equipment lists, and comprehensive technology requirements to include in the Request for Proposal.

Top-Passive, consultants will help you create a practical, cost-effective system to serve the needs of your organization, staff, and clients.

Our needs analysis process includes:

- Site inspection and site survey
- Existing system evaluation
- Staff and stakeholder interviews
- Budgetary estimates
- Architectural and MEP coordination

Top-Passive Corporation





Engineering

Successful Design-Build is the result of systematic planning and processes

We have the experience to direct your project on a successful course. Our proven method of system design and engineering flows in three distinct phases for a complete design-build process.

PHASE 1: Consultation — Our Engineering team will identify system capabilities that perform in line with your expectations. This requires operating within your budget, timeline, and goals to create an innovative yet practical solution.

PHASE 2: Design — After the system functions have been assessed our engineering team generates drawings and documents the design proposal, scope, and budget for the work. You or the architect evaluate and approve, or request modifications. At this stage, custom features can be added, such as equipment choices, wall plate styles, interactive displays, programming details, etc.

PHASE 3: Installation & Integration — The final phase of our design-build process is to deliver your system on time and within budget. This requires efficient, skilled technicians whose goal is to make sure it is right the first time.

The advantage of our design-build service is a centralized responsibility for all phases of your ICT or ELV or IOT or AV project. This process also

ensures consistent standards and a cost-benefit of reduced project time and increased quality with our continuous project management and detailed knowledge of your plan.



The Top-Passive, approach is a comprehensive design-build process that ensures industry experts are appointed to your project from inception to completion.

Our system design and engineering services include:

- Needs analysis
- System design
- CAD and Revit and Visio drawings
- (MEP) coordination drawings
- Project management
- As-built drawings

TRUST





Procurement and Support

Our procurement team can help you with individual product purchases or strategic buying programs for contract pricing, online ordering, and customized warehousing and delivery

Top-Passive, has developed and maintained strong relationships and a solid reputation with more than 250 top industry vendors. Our commitment to this arena is a value to you in that, we have the ability to provide a strategic logistics program to your organization's supply chain system with contract pricing, password protected e-commerce linked to your procurement system, custom warehousing, and just-in-time delivery.

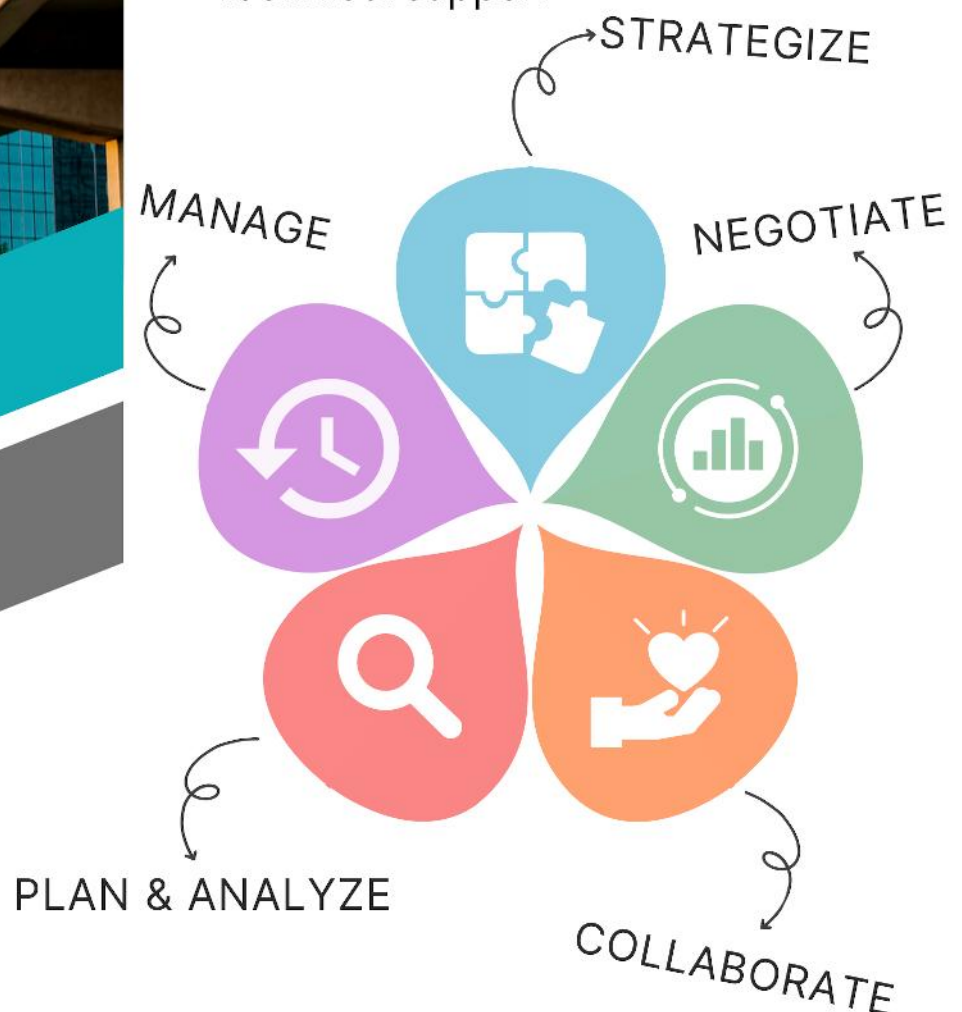
We have designed procurement and administrative support programs to meet various levels of organizational need and can help you create technology standards that are customized consolidated online purchasing, warehousing, and 24/7 tech support with complete reporting and administrative services.

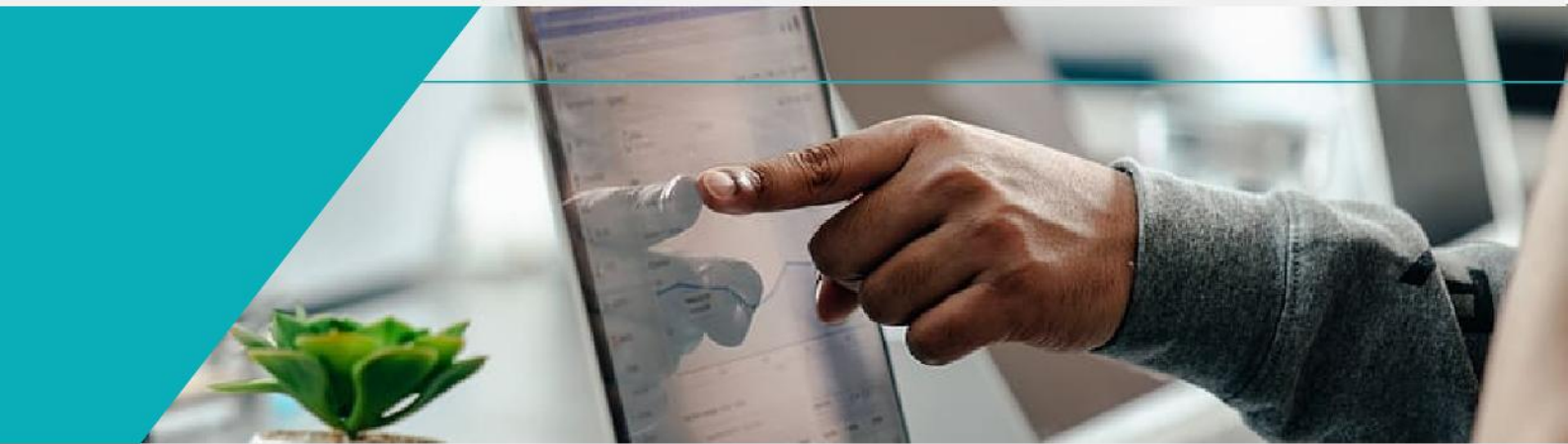
If an equipment lease is the procurement solution you need, we cooperate with leading finance companies to facilitate flexible investment options. Our inventory of rental equipment is one of the nation's largest, and is supported by an experienced technical staff with coast-to-coast outlets to assist you.

A streamlined and efficient procurement solution is a net gain for your bottom line. We can integrate a customized procurement program with your online buying procedures to minimize costs, reduce errors, and improve control over your purchase process.

Our procurement services include:

- Product selection research and advice
- Volume and contract pricing
- Custom e-commerce solutions
- Stocking/warehousing programs
- Creative leasing programs
- Rental solutions
- Logistical services
- Technical support





Training

We educate users and support staff for confident system implementation

Top-Passive, system installation includes hands-on user training performed by our certified instructors. We can deliver one-on-one training or group sessions to help your staff navigate their new technology with confidence. We demonstrate how it will increase their productivity and achieve full operational capabilities. Our technicians take time to carefully review the equipment and functions with all end-users to answer questions and address scenarios to alleviate their hesitations.

In addition to system training, we provide specific instructions in hardware and software applications. We are certified as trainers in SMART systems and can be commissioned to develop your personnel to be specialists for your site. As InfoComm Renewal Units trainers, we can educate your staff members to renew their CTS credentials for systems that are required to operate within this specified compliance.

Clients who utilize Top-Passive's training services experience enhanced management and usage of their new system for optimized performance, support, and investment.

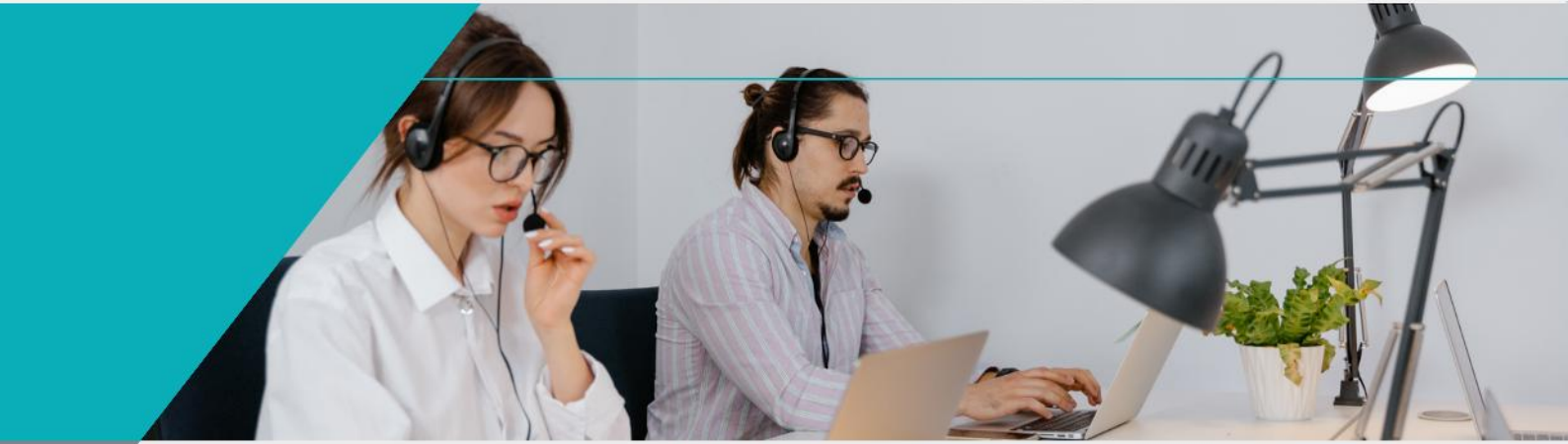
Trained and confident end-users and staff will help unlock the full benefits of your new technology to ensure you get the best possible return on your investment



Our training services include:

- System basics for end users
- Advanced functions of pro audio, scheduling, capture and video conferencing systems
- The use of enterprise communications software such as Microsoft Lync
- In-depth training for your IT staff
- Individual or group sessions available





Maintenance and Service

Entrust the care of your valuable systems with us

Today's ICT and ELV technologies are highly reliable, but occasionally malfunction. Top-Passive, offers flexible service options, including warranty and non-warranty coverage. We supply economical and practical maintenance and service agreements, as well as outsourced staffing at your request.

Our service and maintenance agreements are tailored to you. We recognize that applications and support staff vary in each system installation and bring you value through flexibility. We offer different levels of support, including Platinum, Gold, Silver, and custom levels structured to meet almost any need. This can include on-site staffing services for maintenance, repair, install, or even system coverage when your in-house staff is absent or required on other projects.

A service agreement investment is sound as it minimizes downtime, increases system life, and lessens the burden for your in-house team.

Top-Passive



Top-Passive provides carefully-trained, certified technicians for your facility customized to your needs to manage, operate and maintain your technology.

Our support services include:

- Warranty (and non-warranty) repairs
- Preventative maintenance
- Remote system monitoring
- 24/7 telephone support
- Service agreements
- On-site staffing





Installation and Integration

Our certified installers, programmers, and project managers will execute the system design and ensure its optimal performance

High-end technology integration requires high-end expertise. Top-Passive, employs the best industry talent and develops its staff through continuous technical training. Our install and integration teams hold International certifications so your installation is guided with the highest level of professionalism and technical proficiency. Our teams work as core groups throughout the country and partner with union contractors so we have the ability to work on any job site for low-voltage and infrastructure installation.

Our programmers work closely with end users and engineers to develop a cohesive control system for your ICT and ELV configurations. You can trust that your code is in skilled hands as our programmers are fluent in Python, C++, C#, HTML, CSS, CNET, Java, Javascript, and SIMPL+, and are manufacturer certified in control and DSP systems. They will streamline your user interface and bring intuitive solutions to your operations.

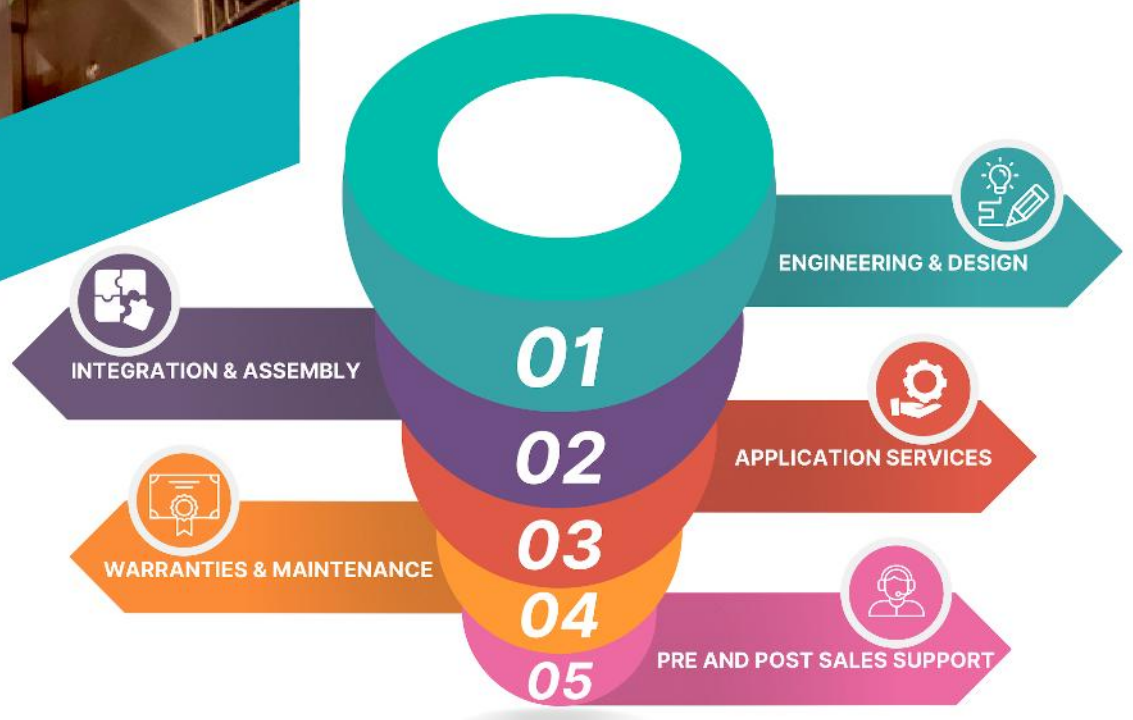
Our Project Managers make your details their priority and work in concert with your architect and general contractor to deliver a complete solution. They have the experience to understand facility parameters and constraints, as well as knowledge of construction timelines and processes. Attention to detail and constant communication keeps your plans on track. Central scheduling, staffing, procurement, logistics, and quality control guarantees a single point of responsibility for your technology implementation which ensures a successful result.



The certified installers, programmers, and project managers of Top-Passive will implement your complete system design with skill and precision to deliver optimal performance on your next solution.

Our support services include:

- Structured cabling installation,
- termination and testing
- Component integration
- Programming services
- System testing and commissioning
- Nationwide coverage
- 24/7 availability



**Our expertise
and technology
will amplify
your success**

SOLUTIONS

Today's IoT (Internet of Things) technological requirements are re-defined by Top-Passive groundbreaking integration capabilities. The new seamless connectivity, reporting, and control over our CLOUD give customers levels of response and service never seen before.

Top-Passive for information technology is an experience that harmoniously integrates into the Smart Cities of today. Our Engineers are constantly re-defining what is possible whilst making the solutions user friendly and more capable.



INFORMATION COMMUNICATION TECHNOLOGY:

Top-Passive provides a wide range of products and services in the ICT industry. These products have been selected from different partners worldwide as these partners and vendors are leaders in the industry. Top-Passive ICT solutions are designed in a way to make the whole network of our clients operate more efficiently and securely. We are committed to providing our clients with the best ICT solutions that will surely achieve their business goals.

Our full portfolio of products includes the following:



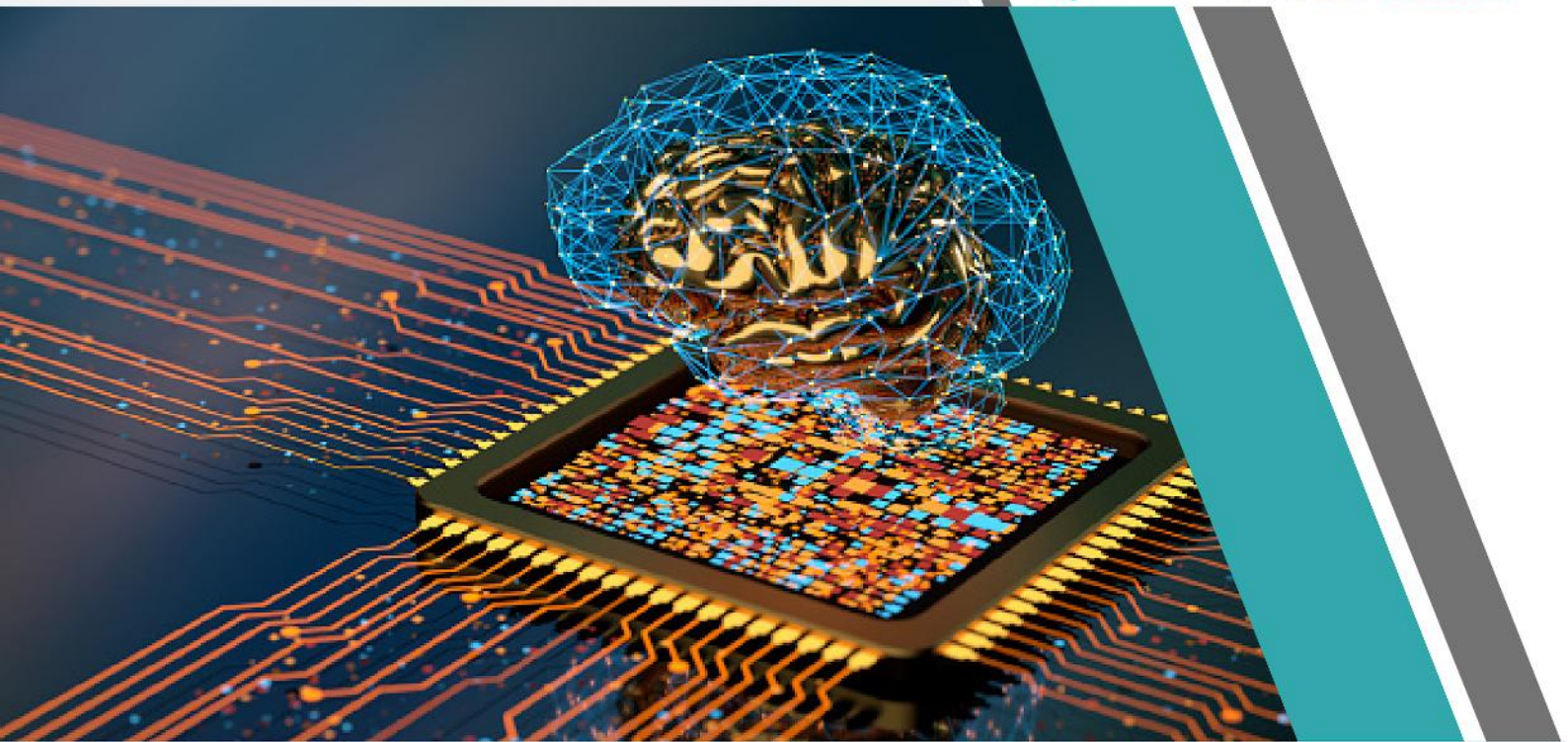


EXTRA LOW VOLTAGE SYSTEMS:

Top-Passive offers a wide range of products and services in the ELV industry. The intricacies of these ELV systems are very well-known and understood in depth by Top-Passive team. Therefore, Top-Passive team’s diverse experiences and knowledge are complemented by the cohesiveness of the team and its strong technical background in the ELV industry. Top-Passive will remain pioneered and stay on the cutting edge of the most innovative ELV products and services.

Our full portfolio of products includes the following:



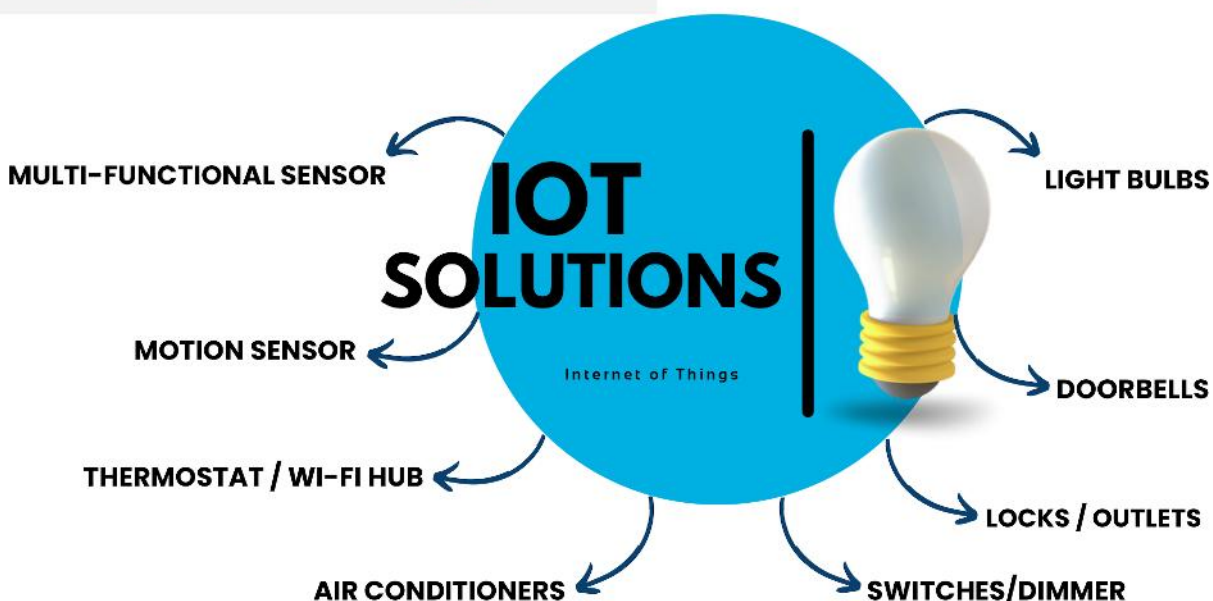


INTERNET OF THINGS (IOT) TECHNOLOGY:

The Top-Passive is focused on driving technology innovation that fosters business development. We help organizations identify best technology practices, build credible brands, and grow their businesses by facilitating member networking, collaboration, and liaisons.

The IoT solutions have helped connect devices, manage tasks, analyze opportunities, and transfer information in a secure way. They provide a safe environment to operate in and help achieve business growth.

Our full portfolio of products includes the following:

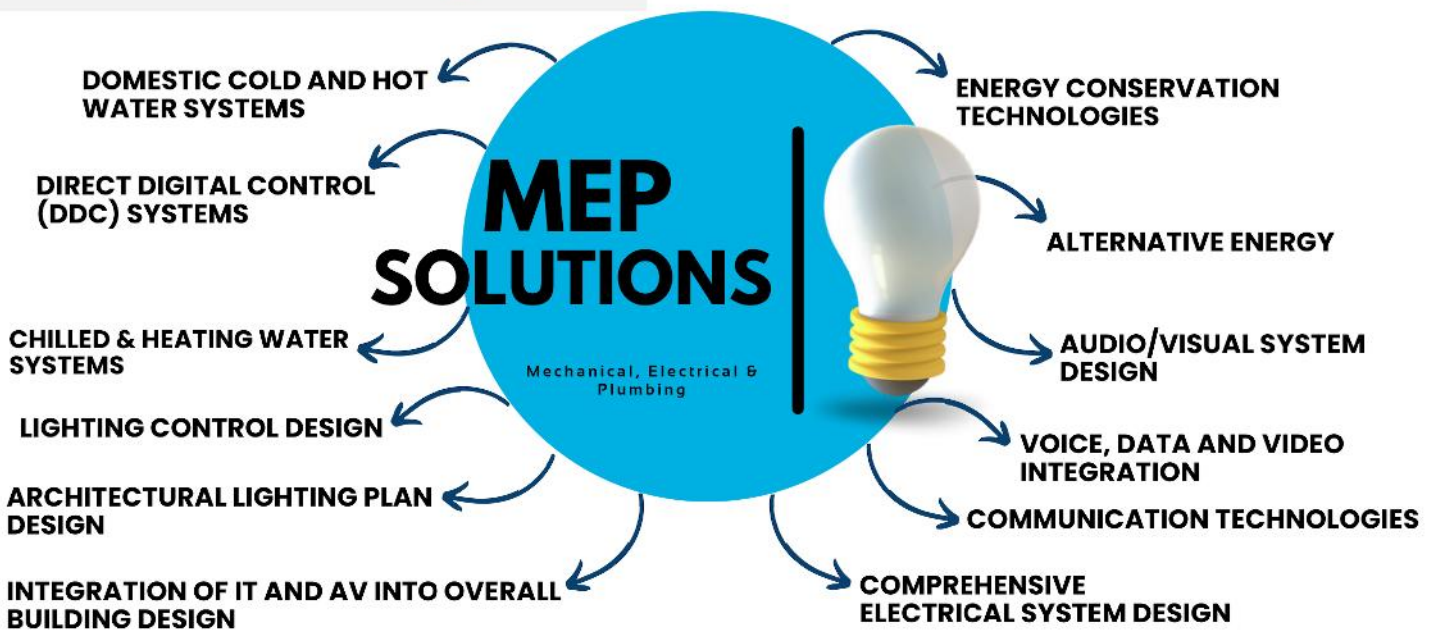




MECHANICAL, ELECTRICAL AND PLUMBING SYSTEMS:

Top-Passive provides a range of top-quality MEP SMART contracting building services. Our major scope of MEP services is the supply, installation, testing, and commissioning of MEP systems and equipment {HVAC, Water supply, Drainage, Gas systems, Electrical, low current systems, Fire alarm systems, and Building management systems BMS....} and for many business sectors such as {villas, high rise buildings, Star hotels, Shopping malls, Retail stores -fit out and Banks -fit out.}

Our full portfolio of products includes the following:





AUDIO VISUAL SYSTEMS:

Top-Passive provides multiple audio-visual products and solutions that meet the business objective and the need of the client. These solutions are being implemented in a way that satisfies the client based on the technical proposal, price, quality, and delivery. Top-Passive boasts of being one of the leaders in providing audio-visual solutions across the region.

Our full portfolio of products includes the following:





SECURITY & SAFETY SYSTEM:

Top-Passive design and delivery of outstanding security and safety systems solutions for every size of business. Top-Passive has different partnerships with industry-leading manufacturers. These partnerships are built to ensure the most secure solutions are provided to the clients. The cohesive and competitive workforce that Top-Passive has developed, will guarantee that solutions are designed and implemented to meet the client's business needs. Top-Passive distinguishes itself by developing and implementing security and safety solutions that will truly make a difference, and more specifically minimize risks and guarantee business continuity.

Our full portfolio of products includes the following:





ARCHITECTURAL & ENTERTAINMENT LIGHTING SOLUTIONS:

There is a tremendous demand for architecture and entertainment lighting these days. With the growing culture of celebrations, there is an increasing trend of lighting solutions applied in various events and places. Top-Passive strives to design and implement exemplary lighting solutions for our clients that will surpass their expectations.

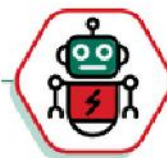
Our full portfolio of products includes the following:














EMERGING TECHNOLOGIES:

Since Top-Passive is staying on the cutting edge of the most innovative and latest technologies. Top-Passive has entered into the digital transformation and emerging technologies industry. These solutions can easily boost the client's objective, and goals, and add real value to their business need that meets UAE Vision 2030. Top-Passive new innovative products and solutions are based on IoT, AI, smart cities solutions, drone solutions, etc.



SYSTEMS INTEGRATION SERVICE

Loyalty to our customers is one of our top priorities. We pride ourselves on training in diverse areas to be able to work within a wide variety of systems. Top-Passive aims to produce truly exceptional systems crafted as per the needs of your organization. This objective outlook allows the customer to truly work with the best systems, not just the ones that are most convenient for us. Through a robust research process in searching for solutions to our client's needs coupled with a deep understanding of the market's leading product offering, Top-Passive services are niche and tailored for your unique business. We have committed to our clients that we will not attempt to oversell you and instead we rely on the longevity of our business relationships. We will be honest in providing potential solutions, competitive prices, and exceptional service. We are confident in our services, and sure that you will return to our organization for all future needs. Solutions are built from the ground up, and using multiple manufacturers and software providers can ensure that your best interests are of the highest priority and that prices remain competitive.

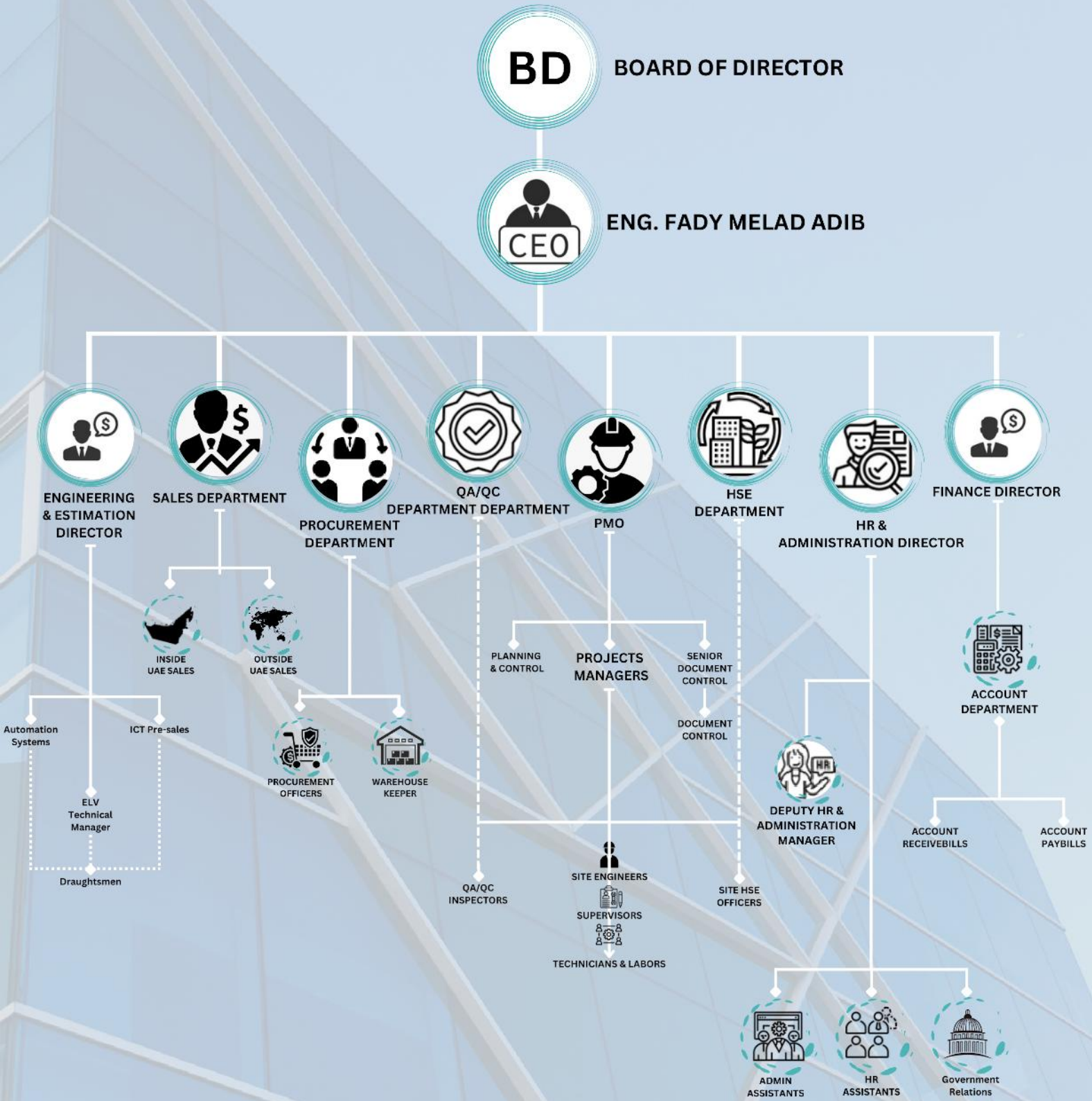
	Infrastructure Inspection				Logistics		Disasters, Security, Measurement			
Applicable Fields	 Energy	 Communication	 Passenger Transport	 Buildings	 Freight Transport Logistics	 Disasters/ Security	 Construction Public	 Agriculture Forestry	 Insurances Accidents	
Drone Applications	Consulting									
	SI Service									
	Power equipment inspection	Page Station Equipment Inspection	Railway Equipment inspection	Gigantic Structure Inspection	Home Delivery	Broad Area Monitoring	Soil/ Material Volume Measurement	Field/ Soil Condition Monitoring	Disaster Damage Investigation	
Other Equipment inspection	Other Equipment Inspection	Vessel Inception	Solar Panel Inspection	Transportation between centers	Drone Detection	Other Measurement	Forest Monitoring	Accident Damage Investigation		


PARTNERS

Top-Passive partners with the top technology leaders from across the globe. These partnerships are essential in ensuring that our customers are in good hands with our in-depth knowledge and experience coupled with that of our partners. Top-Passive is confident that the synergies with the vendors and the relationships that we have built will create the best possible results, which is what we deliver to our clients to surpass their expectations. We work with experts in each field to provide technological solutions for integration into the various products



ORGANIZATIONAL STRUCTURE





SOME OF OUR PROJECTS & CASE STUDIES

DESCRIPTION :

DDC : DIRECT DIGITAL CONTROLLER

DB : DISTRIBUTION BOARD (LIGHTING PANEL)

S/S : START/STOP

ST : STATUS

SOME OF OUR PROJECTS & CASE STUDIES

MINISTRY OF EDUCATION AND TECHNICAL EDUCATION | EGYPT



Digital Transformation of Egyptian High Schools (Installation, Testing and Maintenance)

AL KHARAFI GROUP OUTSOURCING

VENDORS LIST

[NETWORK]: CISCO - ARUBA - HUAWEI
 [SECURITY]: FORCEPOINT
 [SYSTEM]: DELL - HP - HUAWEI
 [UPS]: APC - LEGRAND - INFORM
 [STRUCTURED CABLING]: D-LINK - LEGRAND - PANDUIT



NEW GENERATION INTERNATIONAL SCHOOLS | EGYPT



(Supply and Installation of ELV Works)

VENDORS LIST

[DATA SHOW]: RICOH - INFOCUS
 [WHITEBOARD]: INFOCUS
 [CCTV]: HIKVISION
 [NETWORK WIFI]: D-LINK
 [STRUCTURED CABLING]: D-LINK



MINISTRY OF COMMUNICATIONS AND INFORMATION TECHNOLOGY | EGYPT



Arab Republic of Egypt
 Ministry of Communications
 and Information Technology
www.mcit.gov.eg

ACA Project (Installation, Testing of ICT Works)

AL KHARAFI GROUP OUTSOURCING

VENDORS LIST

[NETWORK]: CISCO - Juniper - SRX
 [SECURITY]: Force Point - NGFW - F5 LTM & ASM
 [SYSTEM]: DELL
 [STRUCTURED CABLING]: LEGRAND - PANDUIT



MINISTRY OF HIGHER EDUCATION & SCIENTIFIC RESEARCH | EGYPT



Ministry of Higher Education
 and Scientific Research

Implementation of e-exams system, automation of university hospitals and digitization of universities.(Installation, Testing and Maintenance)

AL KHARAFI GROUP OUTSOURCING

VENDORS LIST

[NETWORK]: CISCO - Juniper
 [SECURITY]: FORCEPOINT - F5 - FortiGate
 [SYSTEM]: DELL - HP - Lenovo
 [STRUCTURED CABLING]: D-LINK - LEGRAND - PANDUIT



CALIDUS LANDING WELDING WORKING BUILDING J | ABU DHABI, U.A.E



Coordination, supply and installation of ELV works

SCHROEDER PROJEKT OUTSOURCING

VENDORS LIST

- [STRUCTURED CABLING]: DATACOM
- [CCTV SYSTEM]: SAMSUNG
- [ACCESS CONTROL]: SUPREMA
- [UPS]: ITAPOWER



AL SAADIYAT BEACH VILLAS | ABU DHABI, U.A.E



(Supply and Installation of Smart Home Works)

VENDORS LIST

- [THERMOSTATS]: NEST - DAIKIN
- [DIMMER SWITCH]: SCHNEIDER - ADMORE



LICENSES & CERTIFICATIONS



ADMCC Approved System Intergrator

Under Processing



Dubai Police (DPS) (SIRA) approved

Under Processing



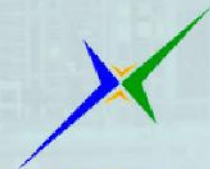
Abu Dhabi Police Registered

Under Processing



ICV Certified

Under Processing



هيئة تنظيم الاتصالات
TELECOMMUNICATIONS REGULATORY AUTHORITY

TRA Registered

Under Processing

SUSTAINABLE DEVELOPMENT GOALS

16 PEACE, JUSTICE AND STRONG INSTITUTIONS



15 LIFE ON LAND



14 LIFE BELOW WATER





Commercial License

Emerging Economic Establishment

رخصة تجارية

منشأة اقتصادية ناشئة

License No	:	CN-4437900	:	رقم الرخصة
ADCCI No	:	8800021664	:	عضوية الغرفة
Establishment Card MOHRE	:	1366110	:	وزارة الموارد البشرية والتوطين بطاقة المنشأة
Establishment Card ICA	:	794374	:	الهيئة الاتحادية للهوية والجنسية - بطاقة المنشأة
Legal Form	:	Sole Proprietorship L.L.C.	:	الشكل القانوني شركة الشخص الواحد ذ م م
Trade Name	:	TOP PASSIVE FOR INFORMATION TECHNOLOGY NETWORK SERVICES - SOLE PROPRIETORSHIP L.L.C.	:	الإسم التجاري توب باسيف لخدمات شبكات تقنية المعلومات - شركة الشخص الواحد ذ م م
Establishment Date	:	11/04/2022	:	تاريخ تأسيس المنشأة
Issue Date	:	11/04/2022	:	تاريخ الإصدار
Expiry Date	:	10/04/2023	:	تاريخ الإنتهاء

الصلة Role	الجنسية Nationality	الملاك / الشركاء Owners / Partners	الرمز No.
مالك Owner	مصر Egypt	فادي ميلاد اديب يوسف FADY MELAD ADIB YOUSEF	42107299

Commercial Activities	:	الأنشطة التجارية		
- Information Technology Network Services		- خدمات شبكات تقنية المعلومات		
- Telecommunication Systems Equipment Installation and Maintenance		- تركيب وصيانة معدات أنظمة الاتصالات الملكية واللاسلكية		
- Security & Surveillance Systems Installation & Maintenance		- تركيب معدات وأجهزة الأمن والمراقبة وصيانتها		
- Computer Infrastructure Establishment, Institution and Maintenance		- انشاء وتأسيس وصيانة البنية التحتية للحاسب الآلي		
- Retail Sale Of Alarm And Surveillance Apparatuses And Equipments		- بيع أجهزة ومعدات الانذار والمراقبة - بالتجزئة		
- Computer Repair and Maintenance		- إصلاح أجهزة الحاسب الآلي وصيانتها		
Address	:	مصنف, مصنف 44, 0 : مبنى, سمو الشيخ سلطان بن خليفة بن زايد و اخرين	:	العنوان
Onwani Address	:		:	العنوان الموحد

وثيقة معتمدة وصادرة بدون توقيع أو ختم من دائرة التنمية الاقتصادية - أبوظبي. للتحقق من صحة البيانات الواردة في الرخصة برجاء زيارة الموقع www.adbc.gov.ae

Approved document issued without signature or stamp by the Department of Economic Development - Abu Dhabi. To verify the license kindly visit www.adbc.gov.ae

Official Email	:	office@top-passive.com	:	البريد الإلكتروني الرسمي
Official Mobile	:	971589072080	:	رقم التواصل الرسمي



Leap in Innovation



Top-Passive

FOR INFORMATION TECHNOLOGY NETWORK SERVICES
SOLE PROPRIETORSHIP L.L.C.



P.O. Box M44 - Abu Dhabi, United Arab Emirates

Mob.: +971 (5) 8 907 2080 - Business: +971 (5) 8 522 6878

Email: info@top-passive.com - Website: www.top-passive.com