

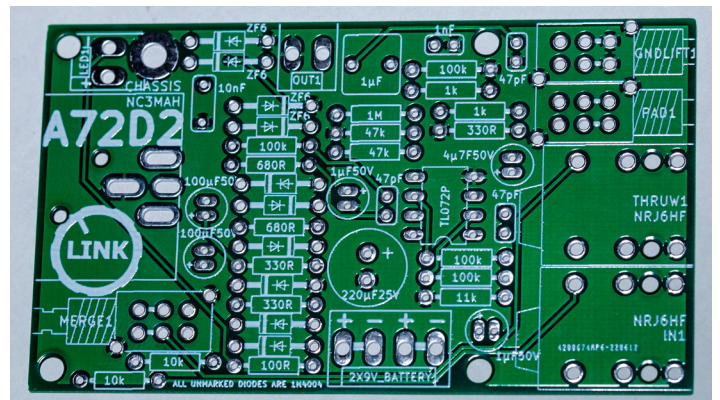
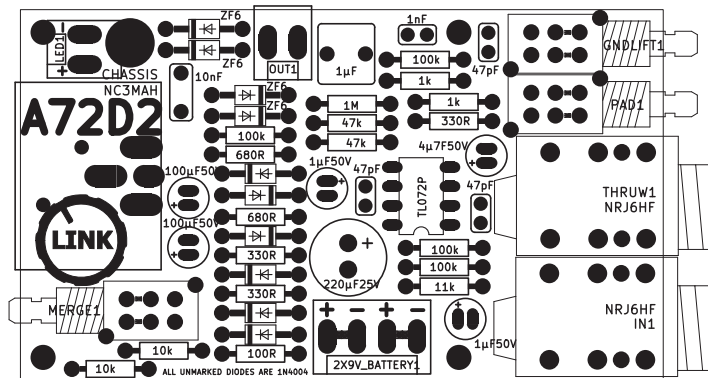
A72D2

Let me introduce this nice Direct Injection Box as Active Version. I have designed this DI in Business Card Format 85x55mm. This version works with different consoles or preamps. This version has Ground Lift, Pad and Merge Function. For the active version, you need a battery supply or 48V phantom power from the dedicated preamp. It's basically inspired by LA Audio Active DI Box.

When a Jack is plugged in and a battery is used - the power will be switched on in the device. Please unplug the input Jack to prevent battery drainage when not in use.

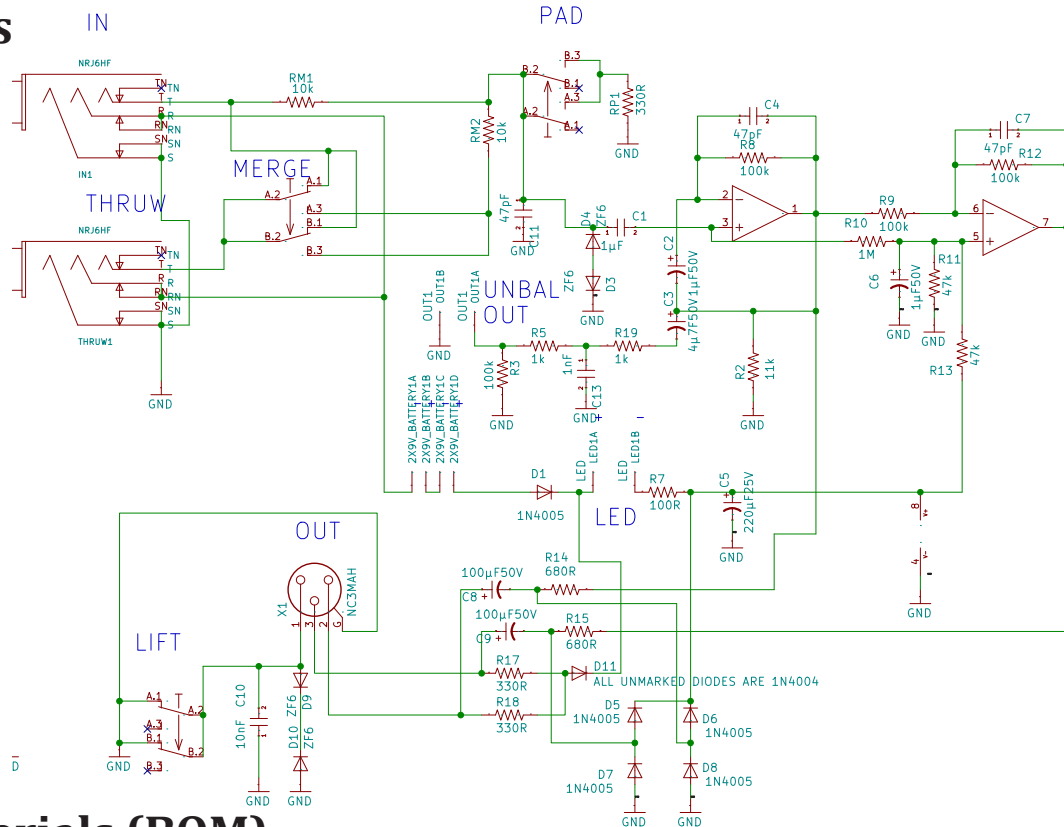
In this sheet, you get Schematic, BOM, and Overlay. In the future, we will add 3D files for printing your own case with a 3D printer. This guide will help with setting up these nice DI boxes. Also, check the original guide of the DI boxes in the support area. Have fun!

PCB layout for reference



DISCLAIMER: Proceed at your own risk. I am not liable for any damage, harm, or loss of any kind resulting from the assembly and/or use of this PCB set. Safety provisions should always be exercised whenever working with any electronics. The following instructions are guidelines only. I can make no guarantee of the accuracy of contents contained within this document.

Schematics



Bill of Materials (BOM)

1	R8,R3,R9,R12	Resistor	4	100k
2	R19,R5	Resistor	2	1k
3	R7	Resistor	1	100R
4	R10	Resistor	1	1M
5	R11,R13	Resistor	2	47k
6	R14,R15	Resistor	2	680R
7	R17,R18,RP1	Resistor	3	330R
8	R2	Resistor	1	11k
9	RM1,RM2	Resistor	2	10k
10	PAD1,GNDLIFT1,MERGE1	612-LC2255EEEN	3	Switch
11	C13	WIMA 5mm	1	1nF
12	C11,C7,C4	Ceramic 2,5mm	3	47pF
13	C10	WIMA 5mm	1	10nF
14	C1	WIMA 5mm	1	1µF
15	C3	Electrolytic	1	4µ7F50V
16	C8,C9	Electrolytic	2	100µF50V
17	C6,C2	Electrolytic	2	1µF50V
18	C5	Electrolytic	1	220µF25V
19	IC3	DIL08	1	TL072P
20	D1,D5,D6,D7,D8,D11	Diode	6	1N4005
21	D10,D9,D3,D4	Diode Zener	4	ZF6
22	OUT1	Connector 3,96mm - 2	1	OUT Unbalanced
23	LED1	LED	1	LED
24	2X9V_BATTERY1	Connector 3,96mm - 4	1	KK-156-4
25	X1	Neutrik NC3MAH	1	NC3MAH
26	IN1,THRUW1	Neutrik NRJ6HF	2	NRJ6HF