

THE  
GATE

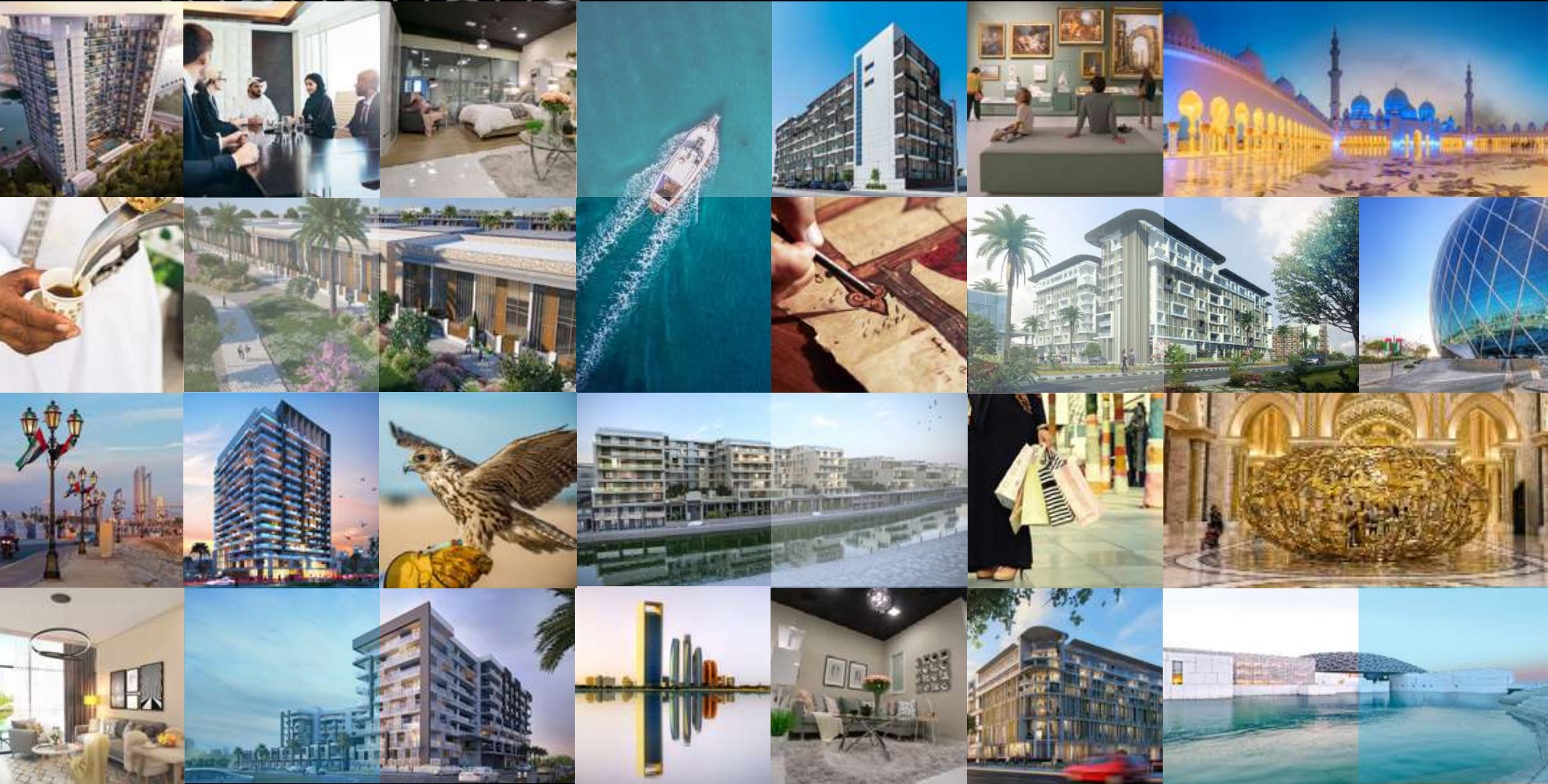
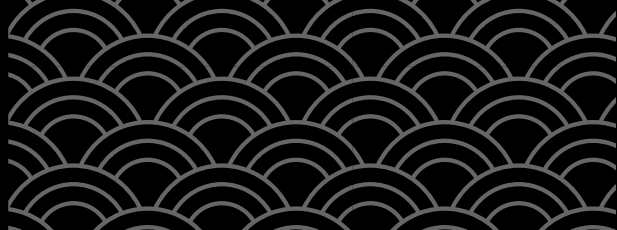


Established as a single entity in 2014, by shareholders with more than 30 years of international experience in property development and construction. The Reportage Group started their first project in Abu Dhabi and have subsequently grown in structure, size and number of projects. Now, a much larger conglomerate with several companies in the group under 'Reportage Properties LLC'.

The aim is to provide innovative environmental sustainable housing solutions by developing and delivering property in Abu Dhabi which offers our investors outstanding value, completed over a timely delivery and creating homes with unrivalled standards of living from a household brand you can rely on.

The residential and commercial properties designed by the group are considered to be real estate landmarks and have proved to be secure and sound investments for all our investors and have helped gain the satisfaction and trust of all stakeholders. The Reportage Group offer dedication, professionalism, value for money, expertise, innovative design techniques, creative ideas, and tested, highly functional processes to all projects.

The Reportage Group provide consistency by being built on a foundation of partnerships which optimizes results, keeping all necessary activities 'in-house' from; land assessment, to land acquisition, to planning, to architectural designing and construction with effective management over the diverse project portfolio.





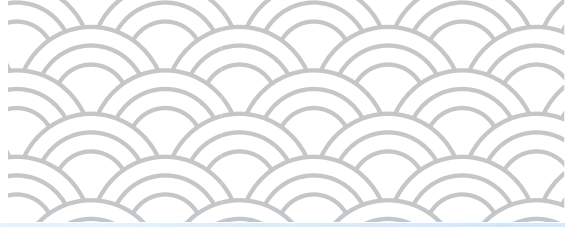


MASDAR CITY

▶ BE PART OF  
THE CITY'S WORLD'S MOST  
SUSTAINABLE ECO-CITY







THE GATE







## Project Summary

Reportage Properties is proud to introduce Masdar The Gate Residence, a mid-rise residential apartment building with facilities in Masdar City in Abu Dhabi. The building features a unique design that creates a contemporary look that is unsurpassed in Abu Dhabi.

Masdar The Gate Residence features 463 luxurious apartments that offer an unparalleled level of convenience and amenities. Each apartment is delivered with a modern and fresh interior design.





Saadiyat Public Beach  
شاطئ السعديات

Zayed Port  
ميناء زايد

Saadiyat Island  
جزيرة السعديات

Al Jubail  
جزيرة الجبيل

Umm Yifinah Island  
جزيرة امه يفينهة

Zeraa Island  
جزيرة زرعة

Yas Island  
جزيرة ياس

Ferrari World Abu Dhabi  
عالم فيراري أبو ظبي

Khor Laftan  
خور لفتان

Bal Rumaid Island  
جزيرة بالرميد

أبو ظبي  
Abu Dhabi

Samaliyah Island  
جزيرة الشمالية

Sas Al Nakhl Island  
جزيرة ساس النخل

Abu Dhabi International Airport  
مطار أبو ظبي الدولي

AL REEF  
الريف



مدينة مصدر  
MASDAR CITY

Airport Area  
منطقة المطار

ZONE 1

ZAYED SPORT CITY  
مدينة زايد الرياضية

KHALIFA CITY  
مدينة خليفة

Sheikh Zayed Grand Mosque Center  
جامع الشيخ زايد بن سلطان

AL KHAYMA  
الخيمة

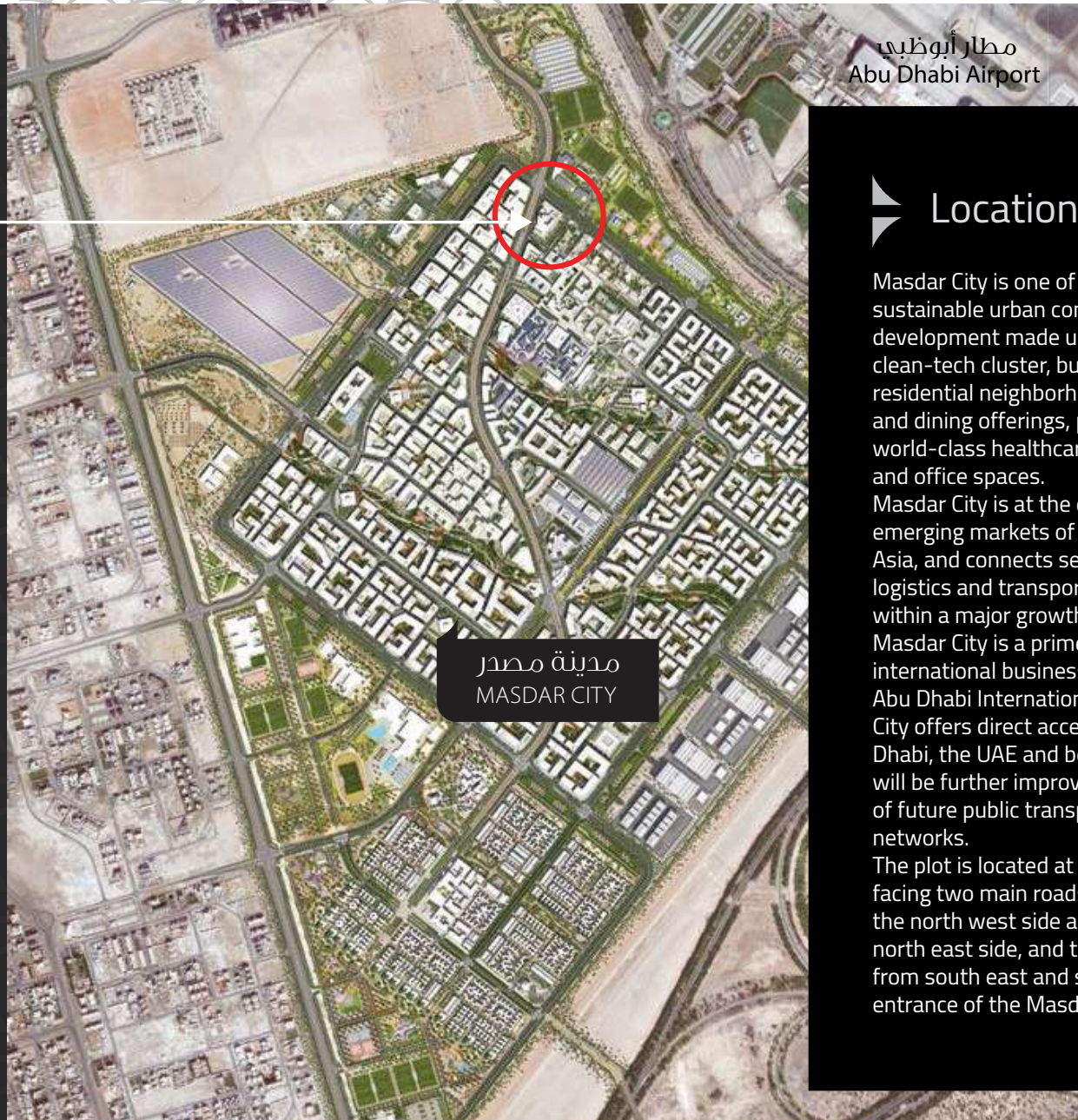
BAWABAT ABU DHABI  
بوابات أبو ظبي

AL MUSHRIF  
المشرف

AL AMAN  
الامان



مطار أبوظبي  
Abu Dhabi Airport



مدينة مصدر  
MASDAR CITY

## Location

Masdar City is one of the world's most sustainable urban communities, a low-carbon development made up of a rapidly growing clean-tech cluster, business free zone, residential neighborhood with luxury retail and dining offerings, premium hospitality, world-class healthcare, public green spaces and office spaces.

Masdar City is at the crossroads of the emerging markets of the Middle East and Asia, and connects seamlessly to a strong logistics and transport network. Located within a major growth area of Abu Dhabi, Masdar City is a prime destination for international business, where proximity to Abu Dhabi International Airport is key. Masdar City offers direct access to all areas of Abu Dhabi, the UAE and beyond. This accessibility will be further improved with the introduction of future public transport and metro networks.

The plot is located at a very unique location facing two main roads, boulevard road on the north west side and airport road on the north east side, and two low traffic roads from south east and south west sides at the entrance of the Masdar City.







**5**  
MINUTES

TO ABU DHABI  
INTERNATIONAL AIRPORT



**20**  
MINUTES

TO AL RAHA  
BEACH



**15**  
MINUTES

TO YAS ISLAND  
LEISURE ACTIVITIES




**15**  
MINUTES

TO FERRARI WORLD




**5**  
MINUTES

TO GEMS EDUCATION AND  
RYAN INTERNATIONAL  
SCHOOL




**5**  
MINUTES

TO MASDAR  
INSTITUTE



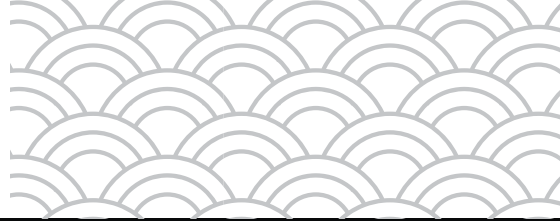
**15**  
MINUTES

TO IRENA BUILDING



**5**  
MINUTES

TO MASDAR CITY  
COMMUNITY MALL



PROJECT DETAILS

TYPES OF UNITS

<b>PLOT AREA</b> 95,643.95 SQ. FT	<b>TOTAL CONSTRUCTION AREA</b> 532,495.08 SQ. FT
<b>TOTAL HEIGHT</b> 34.70 M	<b>LEVELS</b> 2B + G + 7 FLOORS

**RESIDENTIAL BUILDING WITH FACILITIES**

TYPES OF UNITS

200

Studio Apartments  
area from:  
330 sq. ft to 498 sq. ft

112

Junior one bedroom  
apartments area  
from 493 sq. ft to 495 sq. ft

32

One bedroom  
apartments area from  
552 sq. ft to 699 sq. ft

94

Two bedrooms  
apartments area from  
922 sq. ft to 1965 sq. ft

7

Three bedrooms  
apartments area from  
1771 sq. ft

2

Four bedrooms  
apartments 2885 sq.  
ft to 3162 sq. ft

16

Town Houses duplex apartments  
area from 2019 sq. ft to 2034 sq. ft

UNIT FEATURES

- Kitchen cabinets and countertops with refrigerator, washing machine & cooker.
- Fully tiled bathrooms, en-suites and guest toilets, wherever applicable
- Vanity units and mirrors
- Double glazed windows
- Satellite master antenna "SMATV connection "
- Marble & Ceramic floor tiling
- Balconies as per unit plan.
- Wardrobes in bedrooms.
- Shower or bath tub with handle and shower in each bathroom.
- Centrally air conditioned
- Television and telephone connections
- Satellite master antenna "SMATV connection "





## ➤ Amenities & Services

THE GATE



LANDSCAPED GARDENS  
ZEN GARDEN, ART GARDEN, YOGA  
GARDEN & PLANTER AREAS



SWIMMING  
POOL



KIDS SWIMMING  
POOL



MOVIE  
AREA



JOGGING  
TRACK



PLAYGROUND



7 LARGE  
LIFTS





## ➤ Amenities & Services

THE GATE



SEATING AREAS



BOCCE PLAY AREA



COVERED PARKING



CHESS PLAY AREA



GYMNASIUM

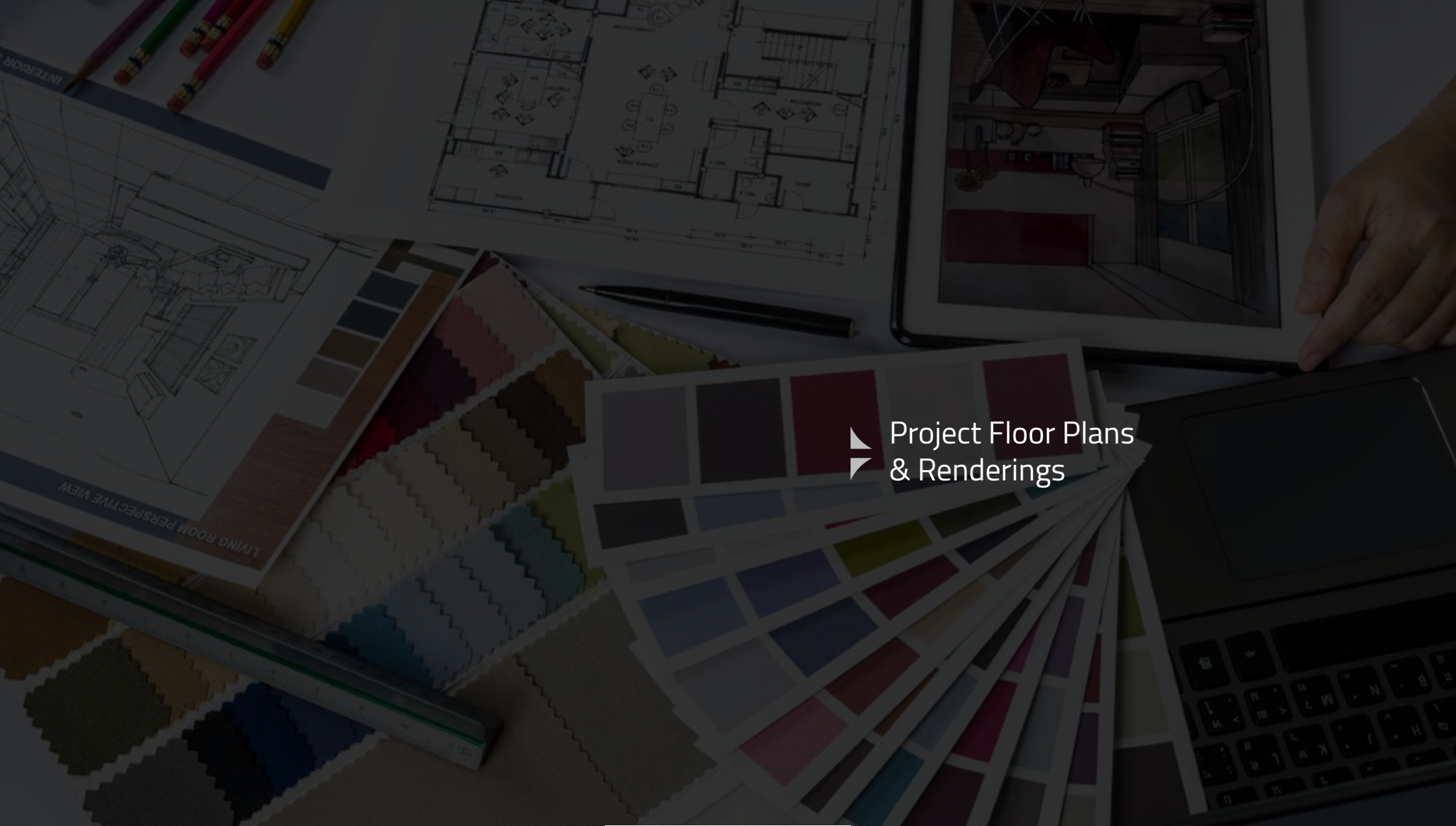


BBQ AREA



PET PLAY AREA





Project Floor Plans  
& Renderings

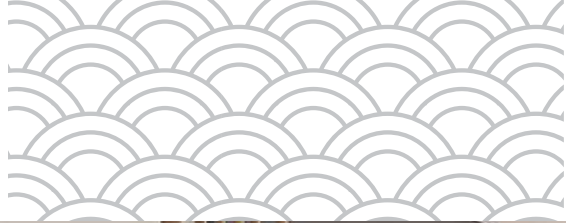


RECEPTION

THE GATE







LIVING AREA

THE GATE



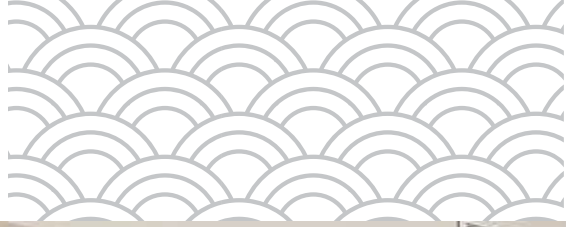


▶ BEDROOM

THE GATE







KITCHEN

THE GATE



▶ BATHROOM

