

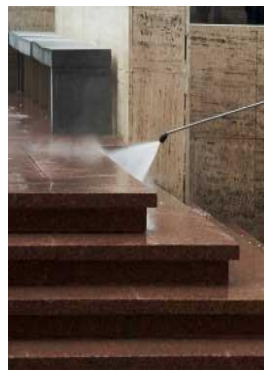


better products for a cleaner environment

MONSOON

K110

High Pressure Cold Water Cleaner



is specifically designed for long and demanding applications in commercial and conservancy cleaning works. It is incorporated with hawk pump which is renowned for its high quality and heavy duty use. The tested and proven rugged pump unit has ceramic sleeved pistons and forged brass cylinder head for high resistance to water erosion, while its internal components are designed for high stress tolerance.



• **Low maintenance pump with gauge**

Rugged internal component designs ensure a longer and smoother operating life, lower maintenance and downtime.



• **Main switch with circuit breaker**



• **Automatic motor cut-off/reactivation**

The automatic switch immediately cuts the motor off upon valve closure to conserve power and reduce wear and tear. Activates instantly upon re-opening the valve.



• **Durable 1450 RPM 4-Pole Motor**

Sturdy motor with low revolution system reduces wear and tear for motor and pump

Standard Accessories:

Construction:

- Sturdy powder coated steel chassis and trolley
- Large accessory platform and lance holder
- Large maneuvering wheels and lockable front castor



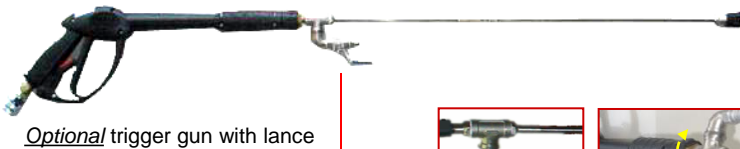
45m nylon braided water supply hose



Optional quick coupling for water supply hose (matches to water inlet quick coupling)



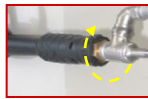
Quick couplings on lance and high pressure water hose for easy connection & detachment



Optional trigger gun with lance



pressure release valve for flow adjustment



rotating connector



30m high pressure hose; highly abrasion resistant, lightweight with quick couplings



Standard shut-off contractor lance with cut-off valve

Technical Specifications	Monsoon K110
Operating pressure, max	110 Bar
Water flow, max	720 ltr/hr
Power absorbed	2.2 kW
Power supply	230V 50Hz 1Ph
Motor	4 Pole 1450 rpm
Water intake temp, max	50°C
Dimensions (body) (L x W x H)	71 X 56 x 92 cm
Weight (without accessories)	52 kg