

SANTA FE



SCAN ME HERE!



Exterior Colors



White Cream (WW2)



Typhoon Silver (T2X)



Phantom Black (NKA)



Magnetic Force (M2F)



Rain Forest (R2F)



Lagoon Blue (UE3)

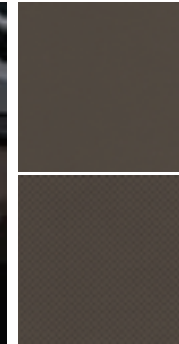
Specification

Engine model & Powertrain			4WD
Engine type			2.2 CRDI, In Line 4-Cylinder
Displacement		cc	2,151
Max. Power		ps / rpm	202 / 3,800
Max. Torque		Kg.m / rpm	45 / 1,750 - 2,750
Fuel consumption	Urban	liter/100km	8.3
	Extra urban	liter/100km	6.2
	Combined	liter/100km	7.5
Suspension	Front	McPherson STRUT	
	Rear	Multi link type	
Suspension	Front	Electronic Parking Brake	
Fuel Tank			67L
Tire			235/60 R18, Alloy Wheel
Gross vehicle weight			2,475

Interior Colors



Dark Beige Two-tone Interior



Dimensions



Making every day upscale.

Santa Fe's wide, distinctive grille merges seamlessly with the main headlamps while dynamic side proportions lead to the rear lamps, delicately wrapped around the edges of the vehicle. Santa Fe's perfectly-balanced stance will ensure an unrivaled presence on the road, helping you make every moment of your day brilliant.





Making every day comfortable.

Santa Fe's interior isn't just bigger – it's filled with more thoughtfulness for the entire family. The high center console's soft and plush leather surface offers the comfort of an armchair the moment you sit down, while the neatly-aligned buttons allow hassle-free control of various functions. The state-of-the-art digital cluster and LCD screen are visually attractive to watch as they provide you with meticulous care while you drive.



2nd and 3rd row seats & space.
Cargo Capacity (7seats, 3rd row folded)





Efficient power and precise control.

2.2 CRDi Diesel Engine

202 Maximum Power
ps / 3,800 rpm

45.0 Maximum Torque
kg.m / 1,750~2,750 rpm

Select your drive mode.

Simply turn the knob to select the mode that suits you best: COMFORT for everyday driving, ECO for optimal fuel efficiency, SPORT for quicker acceleration, or SMART which automatically adjusts gear shift intervals based on recent driving patterns

Terrain Mode selector.

Snow? Sand? Mud? No problem. The control dial lets you quickly switch drive modes to optimise driving performance and all-wheel drive settings for different situations. A quick glance at the centre cluster or navigation screen confirms the selected mode.



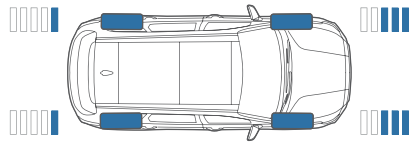
Smart technology used wisely.



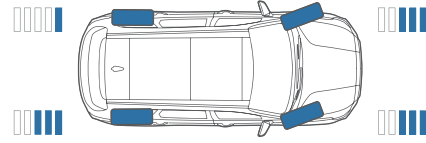
HTRAC™ All-Wheel Drive System.

The innovative HTRAC™ All-Wheel Drive system delivers optimum handling and cornering – which makes driving slippery city streets and snowy country roads safer and more relaxed. This system automatically senses slippery or unstable driving conditions and proactively balances power between the front and rear wheels to ensure stability at all times.

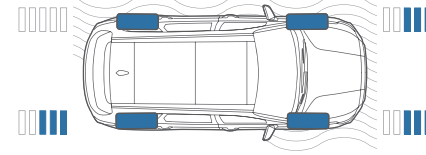
Highway Cruise



Cornering



Slippery Road



Being prepared involves detailed and meticulous care. Santa Fe's Advanced Driver Assistance System considers the various conditions a driver might unexpectedly face to undertake complex decisions or minimize mistakes.



Feature



12.3" Full LCD Cluster &
Blind-Spot View Monitor (BVM)



Head-Up Display (HUD)



Surround View Monitor (AVM)
4 HD cameras mounted (360°)



Rear Occupant Alert



Wireless Smartphone
Charging System



Bridge-type High Console &
Shift-By-Wire Automatic Transmission



Front Seat Warming
& Cooling Air Ventilation



Rear Door Manual Curtain



LED Headlamps



LED Rear Combination Lamps



LED Outside Mirror Repeaters



Panorama Sunroof